

Lomiko Metal's Projects

La Loutre Natural Flake Graphite

- **Pre-feasibility study led by DRA Americas – expected to finish by the end of Q1 2026, currently completed components:**
- PFS level flotation tests produced a graphite concentrate grade of up to 99.7% Cg! **LCT testing confirms 98.6-99.1% Cg con grade at 94.7% recovery!** Optimized PFS level plant flowsheet. Good flake distribution across the fractions
- **The purification studies completed show 99.99% graphitic carbon purity with low levels of impurities, confirming suitability for anode material.**
- Completed 13,100m drill program with 79 infill holes, **increasing Indicated resources by 184% from 1.1Mtonnes of in-situ graphite to 3.0Mt in addition to 0.7Mtonnes of inferred resource.**

Deposit		2023 MRE			2021 MRE		
		EV	Battery	TOTAL	EV	Battery	TOTAL
Cut-off (%) Cg		1.5	1.5	1.5	1.5	1.5	1.5
Indicated mineral resource	Tonnage (kt)	24,267	40,429	64,696	8,158	15,007	23,165
	Graphite (%)	5.80	3.86	4.59	6.48	3.44	4.51
	Graphite (kt)	1,407	1,562	2,969	529	516	1,045
Inferred mineral resource	Tonnage (kt)	3,067	14,384	17,452	12,829	33,992	46,821
	Graphite (%)	4.29	3.60	3.72	5.81	3.33	4.01
	Graphite (kt)	132	518	650	745	1,132	1,878

Technical report NI-43-101 was prepared by InnovExplo independent consulting group

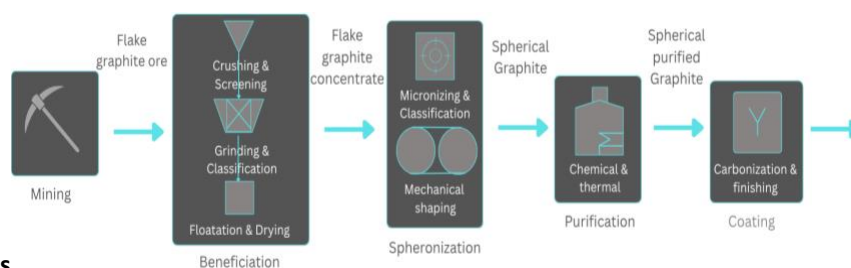
- **Completed half-cell coin battery and single-layer battery trials, achieving above-average conductivity results**
- *All metallurgical data was QP'd by Oliver Peters from*
- *All drilling or exploration data results are reviewed Fekete, P.Geo. from BrakawayX*

PRE-FEASIBILITY STUDY -To finish - Q1 2026

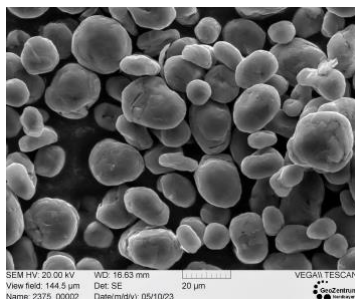
- ✓ Completed PFS Components
- ✓ Finished Mineral Resource Estimate
- ✓ Finished pre-feasibility metallurgical testing
- ✓ Finished battery testing at the lab scale

PFS Components in progress:

- DRA Americas as the study Lead – site infrastructure and flotation plant design
- InnovExplo/Norda Stelo – mining and reserves
- Knight-Piesold – geotechnical, geomechanical and hydrology
- SLR – Water balance and water quality modelling
- Maine Water Services – Design water treatment flow



Lomiko SPG20



La Loutre Pouch cells



Anode upgrading process for 200t bulk sample

Lomiko graphite Half-cell batteries produced and tested by Polaris (SPG16 top, SPG20 bottom row)
 SPG20 sample from La Loutre has superior charging capacity compared to commercial graphite in the market today in North America.

Contact Us

info@lomiko.com

1-833-456-6456 or 1-833-4-LOMIKO

www.lomiko.com

@LomikoMetals



LOMIKO
 METALS®

DoW and NRC Non-repayable Contributions

DoD Technology Investment Agreement

✓ Award: US\$8.35m

- The TIA agreement entered into with the DoD is to complete three distinct phases of research and development work with independent experts and consultants over a 5-year period
- Lomiko has de-risked 50% of study costs to US\$8.35M non-dilutive contribution

Phase 1: Completion of a Pre-Feasibility Study (PFS) and all environmental studies

Phase 2: Completion of metallurgical studies and bulk sample, including production of cSPG with Quebec research centers

Phase 3: Completion of a Definitive Feasibility Study (DFS)

NRC CMRDD Program

✓ Award: C\$4.9m

- The CMRDD2 program administered by Natural Resources Canada to pilot the integrated graphite upgrading process with a 200 mt bulk sample over 3 years.

- Total contribution agreement of C\$6.6m where Lomiko will contribute 25% of this funding

- Award supports four tasks with the work with Canadian labs

Task 1: Crushing, grinding and flotation of La Loutre graphite ore

Task 2: Chemical and thermal purification of graphite concentrate

Task 3: Micronization and spheroidization of the flotation concentrate.

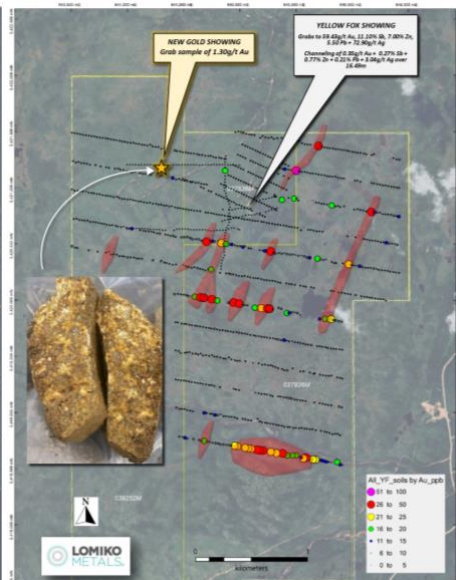
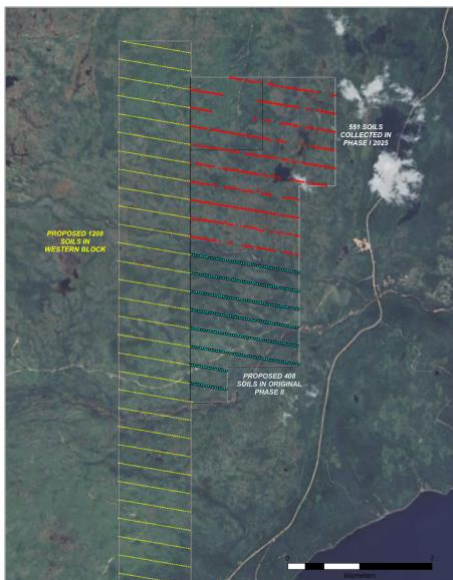
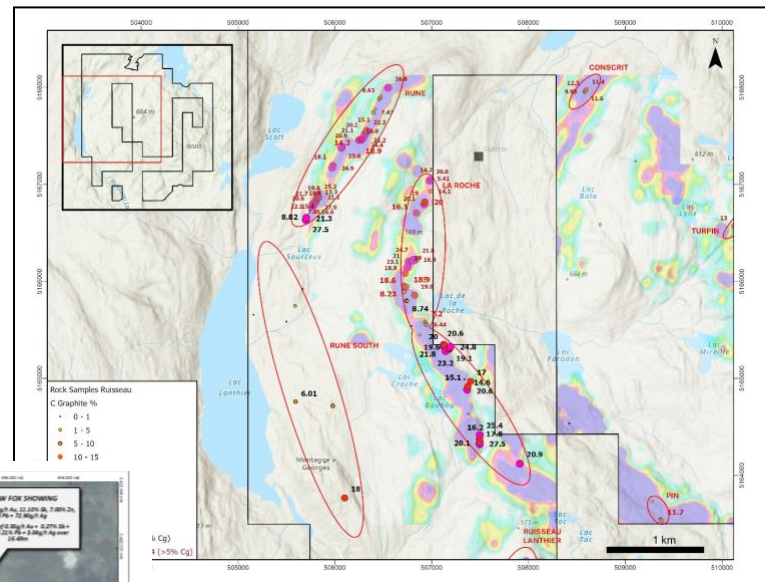
Task 4: Carbon coating of purified graphite.

Why Lomiko?

- A graphite shortfall before the end of the decade, just as Lomiko anticipates having its La Loutre project in operation if funding is available to complete studies.
- Lomiko holds 3.0Mt of in-situ M&I and 0.7Mt of inferred graphite in a high-potential Grenville belt in Quebec.
- New discovery Ruisseau with the highest carbon grades in Quebec up to 27.9%Cg.
- Exposure to antimony, base metals, and gold discovery in Newfoundland.
- ESG at heart. Lomiko is 1 of 25 ECOLOGO-certified mining companies in Quebec.

Rousseau – New graphite discovery

- Ruisseau drill program targeting 1,5km Rune and 3,85km La Roche zones with carbon grades up to 27.9%Cg
- Targets were selected based on the 2022 airborne geophysical survey and the strong graphite values obtained from the 2023, 2024, and 2025 prospecting and sampling programs.
- The Company intends to proceed with 38 38-hole, 2,500-metre drill program that will test the Priority 1 drill targets at Rune and La Roche.
- QP Mark Fekete P.Geo. from BrakawayX



Yellow Fox

Antimony, gold, silver, zinc and lead

The trenching exposed the rocks, resulting in grab samples to 59.43g/t Au, 11.10% Sb, 7.00% Zn, 72.90g/t Ag, and 5.50% Pb in arsenopyrite-stibnite veins within altered monzogranite.

Similar geology to the past producing antimony mine Beaver Brook with the intense-carbonate alteration with sulphide-bearing stringers to veins of stibnite and arsenopyrite with similar high-grade tenors of antimony, gold, lead, zinc, and silver.

QP Wayne Reid P.Geo., Metals Creek