

Lomiko's Projects

La Loutre Natural Flake Graphite

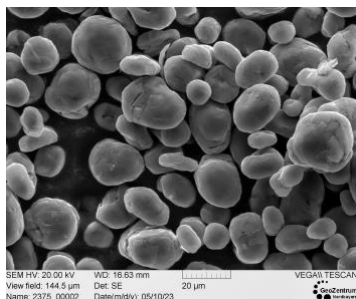
- **Pre-feasibility study led by DRA Americas – expected to finish by the end of Q1 2026, currently completed components:**
- PFS level flotation tests produced a graphite concentrate grade of up to 99.7% Cg! **LCT testing confirms 98.6-99.1% Cg con grade at 94.7% recovery!** Optimized PFS level plant flowsheet. Good flake distribution across the fractions
- **The purification studies completed show 99.99% graphitic carbon purity with low levels of impurities, confirming suitability for anode material.**
- Completed 13,100m drill program with 79 infill holes, **increasing Indicated resources by 184% from 1.1 m of in-situ graphite to 3.0 m in addition to 0.7 m of inferred resource.**

| | | 2023 MRE | | | 2021 MRE | | |
|----------------------------|---------------|----------|---------|--------|----------|---------|--------|
| Deposit | | EV | Battery | TOTAL | EV | Battery | TOTAL |
| Cut-off (%) Cg | | 1.5 | 1.5 | 1.5 | 1.5 | 1.5 | 1.5 |
| Indicated mineral resource | Tonnage (kt) | 24,267 | 40,429 | 64,696 | 8,158 | 15,007 | 23,165 |
| | Graphite (%) | 5.80 | 3.86 | 4.59 | 6.48 | 3.44 | 4.51 |
| | Graphite (kt) | 1,407 | 1,562 | 2,969 | 529 | 516 | 1,045 |
| Inferred mineral resource | Tonnage (kt) | 3,067 | 14,384 | 17,452 | 12,829 | 33,992 | 46,821 |
| | Graphite (%) | 4.29 | 3.60 | 3.72 | 5.81 | 3.33 | 4.01 |
| | Graphite (kt) | 132 | 518 | 650 | 745 | 1,132 | 1,878 |

Technical report NI-43-101 was prepared by InnovExplo independent consulting group

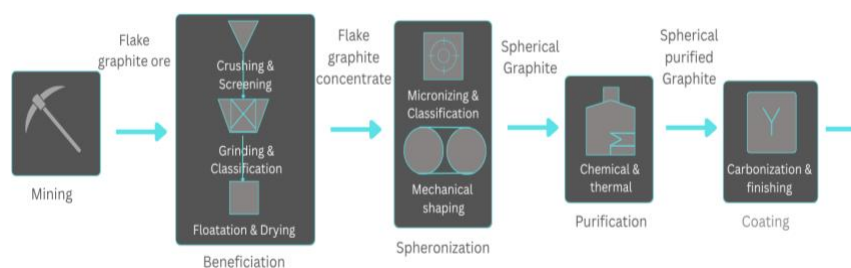
- **Completed half-cell coin battery and single-layer battery trials, achieving above-average conductivity results**
- *All metallurgical data was QP'd by Oliver Peters from MetPro*
- *All drilling or exploration data results are reviewed Mark Fekete, P.Geo. from BrakawayX*

Lomiko SPG20



Estimated PFS finish date: Q1 2026

- ✓ **Completed PFS Components**
- ✓ **Finished Mineral Resource Estimate**
- ✓ **Finished pre-feasibility metallurgical testing**
- ✓ **Finished battery testing at the lab scale**
- ✓ **PFS Components in progress:**
 - DRA Americas as the study Lead – site infrastructure and flotation plant design
 - InnovExplo/Norda Stelo – mining and reserves
 - Knight-Piesold – geotechnical, geomechanical and hydrology
 - SLR – Water balance and water quality modelling
 - Maine Water Services – Design



Lomiko graphite Half-cell batteries produced and tested by Polaris (SPG16 top, SPG20 bottom row)
 SPG20 sample from La Loutre has superior charging capacity compared to commercial graphite in the market today in North America.

Contact Us

info@lomiko.com

1-833-456-6456 or 1-833-4-LOMIKO

www.lomiko.com

@LomikoMetals



LOMIKO
 METALS®

DoD and NRC Grants

DoD Technology Investment Agreement

✓ Award: US\$8.35m

- The TIA agreement entered into with the DoD is to complete three distinct phases of research and development work with independent experts and consultants over a 5-year period
- Lomiko has de-risked 50% of study costs to US\$8.35m grant
- This funding supports the full vision and values of Lomiko for a decarbonized mine model, community-focused studies, and ongoing metallurgical test work

Phase 1: Completion of a Pre-Feasibility Study (PFS) and all environmental studies

Phase 2: Completion of metallurgical studies and bulk sample, including cSPG

Phase 3: Completion of a Definitive Feasibility Study (DFS)

NRC CMRDD Program

✓ Award: C\$4.9m

- The CMRDD2 program administered by Natural Resources Canada is to pilot the integrated graphite upgrading process with a 200 mt bulk sample over 3 years for a total contribution agreement of C\$6.6m where Lomiko will contribute 25% of this funding
- It supports four tasks: these tasks complement the Phase 2 of the DoD grant
- All work and equipment will be in a Canadian lab setting

Task 1: Crushing, grinding and flotation of La Loutre graphite

Task 2: Chemical and thermal purification of graphite concentrate

Task 3: Micronization and spheroidization of the flotation concentrate

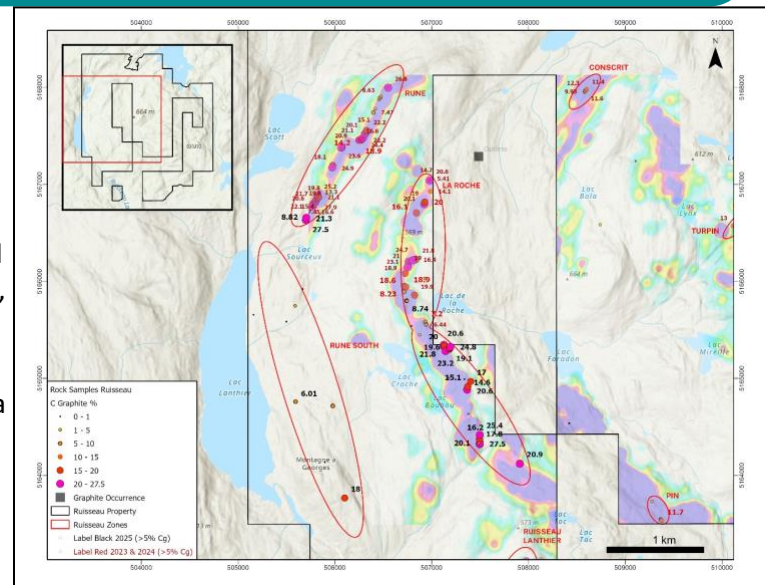
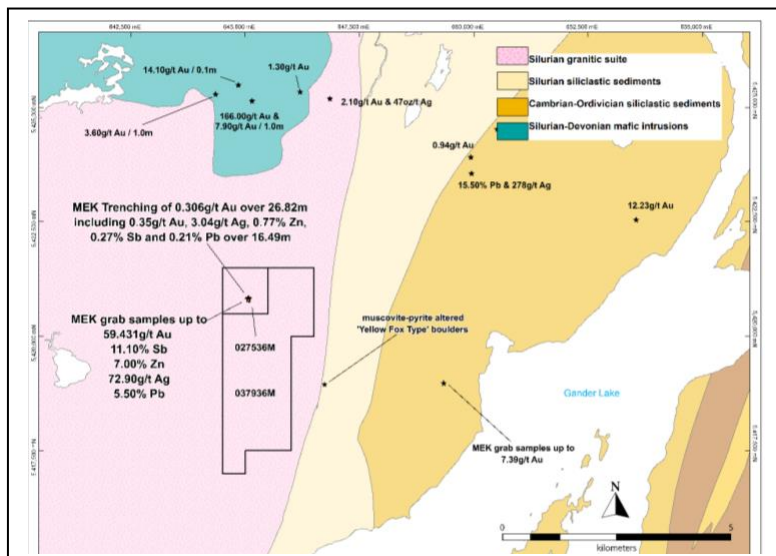
Task 4: Carbon coating of purified graphite

Why Lomiko?

- A graphite shortfall will start in 2027, just as Lomiko anticipates having its La Loutre project in operation if funding is available to complete studies.
- Lomiko holds 3.6Mt of in-situ graphite in a high-potential region in Quebec – Grenville belt. 3.0Mt indicated.
- ESG at heart. Lomiko is 1 of 25 ECOLOGO-certified mining companies in Quebec.

Rousseau – graphite discovery

- Ruisseau drill program:
- A total of five primary and four secondary targets at Rune and
- Six primary and four secondary targets at La Roche have been selected for drill testing
- Targets were selected based on the 2022 airborne geophysical survey and the strong graphite values obtained from the 2023, 2024 and 2025 prospecting and sampling programs.
- The Company intends to proceed with a 2,500-metre drill program that will test the Priority 1 drill targets at Rune and La Roche.
- *QP Mark Fekete P.Geol. from BrakawayX*



Yellow Fox

Antimony, gold, silver, zinc and lead prospectivity:

The trenching exposed the rocks, resulting in grab samples to 59.43g/t Au, 11.10% Sb, 7.00% Zn, 72.90g/t Ag, and 5.50% Pb in arsenopyrite-stibnite veins within altered monzogranite.

Similar geology to the past producing antimony mine Beaver Brook with the intense- carbonate alteration with sulphide-bearing stringers to veins of stibnite and arsenopyrite with similar high-grade tenors of antimony, gold, lead, zinc, and silver. *QP Wayne Reid P.Geol., Metals Creek*