



***A responsible critical
minerals developer
of choice in
Quebec & Newfoundland***

August 2025

**TSXV: LMR
Frankfurt: DH8**



DISCLAIMER

This presentation is not a prospectus, offering memorandum or an advertisement and is being provided for information purposes only and does not constitute or form part of, and should not be construed as, an offer or invitation to sell or any solicitation of any offer to purchase or subscribe for any securities of Lomiko Metals Inc. (the “**Corporation**”) in Canada, the United States or any other jurisdiction. Neither this presentation, nor any part of it, nor anything contained or referred to in it, nor the fact of its distribution, should form the basis of or be relied on in connection with or act as an inducement in relation to a decision to purchase or subscribe for or enter into any contract or make any other commitment whatsoever in relation to any securities of the Corporation.

This presentation contains "forward-looking information" within the meaning of the applicable Canadian securities legislation that is based on expectations, estimates, projections and interpretations as at the date of this presentation. The information in this presentation about the Corporation; and any other information herein that is not a historical fact may be "forward-looking information" (“**FLI**”). All statements, other than statements of historical fact, are FLI and can be identified by the use of statements that include words such as "anticipates", "plans", "continues", "estimates", "expects", "may", "will", "projects", "predicts", "proposes", "potential", "target", "implement", "scheduled", "intends", "could", "might", "should", "believe" and similar words or expressions. FLI in this presentation includes, but is not limited to: the Corporation's objective to become a responsible supplier of critical minerals, exploration of the Corporation's projects, including expected costs of exploration and timing to achieve certain milestones, including timing for completion of exploration programs; the Corporation's ability to successfully fund, or remain fully funded for the implementation of its business strategy and for exploration of any of its projects (including from the capital markets); any anticipated impacts of COVID-19 on the Corporation's business objectives or projects, the Corporation's financial position or operations, and the expected timing of announcements in this regard. FLI involves known and unknown risks, assumptions and other factors that may cause actual results or performance to differ materially. This FLI reflects the Corporation's current views about future events, and while considered reasonable by the Corporation at this time, are inherently subject to significant uncertainties and contingencies. Accordingly, there can be no certainty that they will accurately reflect actual results. Assumptions upon which such FLI is based include, without limitation: current market for critical minerals; current technological trends; the business relationship between the Corporation and its business partners; ability to implement its business strategy and to fund, explore, advance and develop each of its projects, including results therefrom and timing thereof; the ability to operate in a safe and effective manner; uncertainties related to receiving and maintaining exploration, environmental and other permits or approvals in Quebec; any unforeseen impacts of COVID-19; impact of increasing competition in the mineral exploration business, including the Corporation's competitive position in the industry; general economic conditions, including in relation to currency controls and interest rate fluctuations.

The Corporation's actual results, programs and financial position could differ materially from those anticipated in such FLI as a result of numerous factors, risks and uncertainties, many of which are beyond the Corporation's control. These include, but are not limited to: the market for critical minerals; the evolution of supply and demand for critical minerals; the Corporation's projects may not be explored or developed as planned; uncertainty relating to possible cost-overruns in implementing its business strategy and developing its projects; market prices affecting development of the projects; the availability and ability to secure adequate financing and on favourable terms; inability to obtain required governmental permits; any limitations on operations imposed by governments in the jurisdictions where we operate; technology risk; inability to achieve and manage expected growth; political risk associated with foreign operations; changes in government regulations, including currency controls; changes in environmental requirements; failure to obtain or maintain necessary licenses, permits or approvals; risks associated with COVID-19; insurance risk; litigation risk; receipt and security of mineral property titles and mineral tenure risk; changes in project parameters; uncertainties associated with estimating mineral resources and mineral reserves in the future, including uncertainties regarding assumptions underlying such estimates; whether mineral resources (if any) will ever be converted into mineral reserves; opposition to exploration and/or development of the projects; surface access risk; geological, technical, drilling or processing problems; health and safety risks; unanticipated results; unpredictable weather; unanticipated delays; reduction in demand for minerals; intellectual property risks; dependency on key personnel; workforce and equipment availability; currency and interest rate fluctuations; and volatility in general market and industry conditions.

This Presentation has not been independently verified and the information contained within may be subject to updating, revision, verification and further amendment. Except as otherwise provided for herein, neither the Corporation, nor its directors, officers, shareholders, agents, employees or advisors give, has given or has authority to give, any representations or warranties (express or implied) as to, or in relation to, the accuracy, currency, reliability or completeness of the information or opinions in this Presentation, or any revision thereof, or of any other written or oral information made or to be made available to any interested party or its advisers and liability therefore is expressly disclaimed for any loss howsoever arising, directly or indirectly, from any use of such information or opinions or otherwise arising in connection therewith.

Except as may be required by applicable law, in furnishing this presentation, the Corporation does not undertake or agree to any obligation to provide the recipient with access to any additional information or to update this presentation or to correct any inaccuracies or omissions. Information contained in this presentation is the property of the Corporation and it is made available strictly for the purposes referred to above.

Land Acknowledgement

The land/projects where we operate are located within the traditional land of the Algonquin Anishnaabeg.

Our vision is to embrace Indigenous people and Indigenous values within our projects to develop a sustainable approach on our path to critical minerals development while honouring the lives, memories, and hopes of all seven generations close.

The La Loutre graphite project site is located within the Kitigan Zibi Anishinabeg (KZA) First Nation's territory. The KZA First Nation is part of the Algonquin Nation and the KZA traditional territory is situated within the Outaouais and Laurentides regions.



Lomiko advantage

Exposure to two strategic minerals in demand in North America – graphite and antimony

- ✓ Investment in antimony, silver, and gold exploration project in Newfoundland – excellent upside in critical minerals that are banned for export from China
- ✓ La Loutre is the seventh biggest graphite deposit close to the US and battery highway, making it the largest undeveloped natural flake graphite project in Canada

Endorsement from Federal, Provincial and Federal grant agencies

- ✓ **\$16M** in the awards and investment agreement – **non-repayable, securing 50%** of all study funds
- ✓ **Initiated PFS** level engineering led by DRA Americas, InnovExplo and Knight Piesold – target completion **Q1 2026 and subject to market conditions**
- ✓ Project is vetted by the US Department of Defence and the Canadian Federal Government

Energy transition and energy security investment opportunity

- ✓ Chinese export restrictions on graphite and antimony demonstrate tremendous upside potential
- ✓ Battery testing showcases excellent results, meeting and exceeding industry standards.

Graphite Market

The China dynamic underlines the importance of Lomiko

China is the world's top graphite producer and exporter, refining more than 90% of the world's graphite into anode material and trade war on critical minerals from China has escalated – China banned shipments of gallium, germanium, **antimony**, and so-called superhard materials to USA

The DoD Wants 48,000 Tonnes of Natural Flake Graphite by 2032 (source: The Defence Logistics Agency Request for Information (RFI))..... and they are not the only ones looking - recently announced NextSource secured an offtake with Japan for 9,000/pa and Oman's Chinese-owned facility is looking for major feedstock quantities, 100,00/pa for phase 1. Lomiko's graphite has global demand

Countervailing measures from USA:

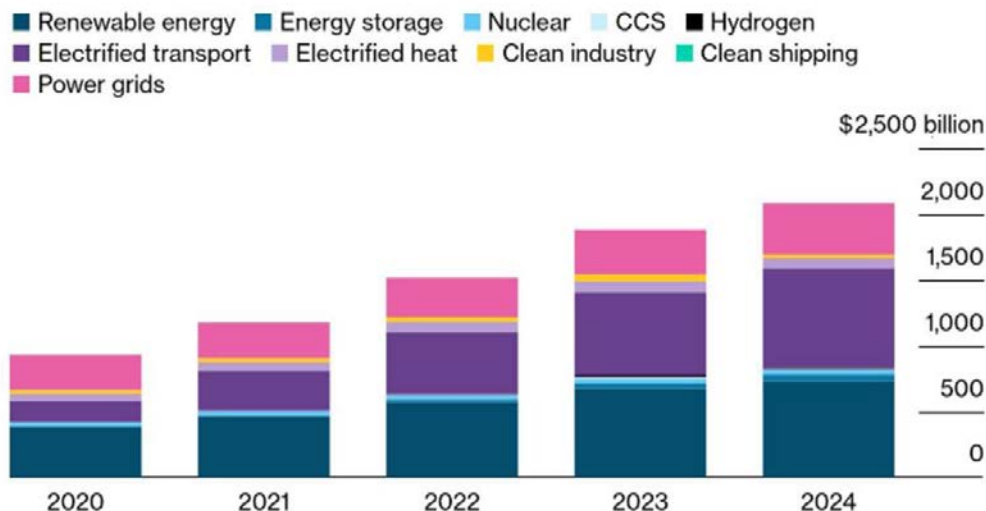
- On July 17, 2025, the U.S. Department of Commerce imposed a preliminary anti-dumping duty of 93.5% on anode-grade graphite imported from China
- When combined with existing countervailing duties (~11.5%), Section 301 tariffs (~25%), and a broader 30% Chinese-goods tariff, the effective total duty rate reaches **roughly 160%** - final determinations of these U.S. tariffs are expected by December 5, 2025
- Canada is the natural choice for natural flake graphite supply

Lomiko: an ideal partner for investment into electrification growth market - 24% growth rate as 9.1m EVs sold in H1 25

Globally, natural graphite demand is set to grow strongly to reach 2.8 million tonnes (MT) by 2035, from 1.2MT in 2025, fuelled mainly by the battery sector (Benchmark Intelligence)

Energy Transition Investment Topped \$2 Trillion for the First Time

Global energy transition investment, by sector



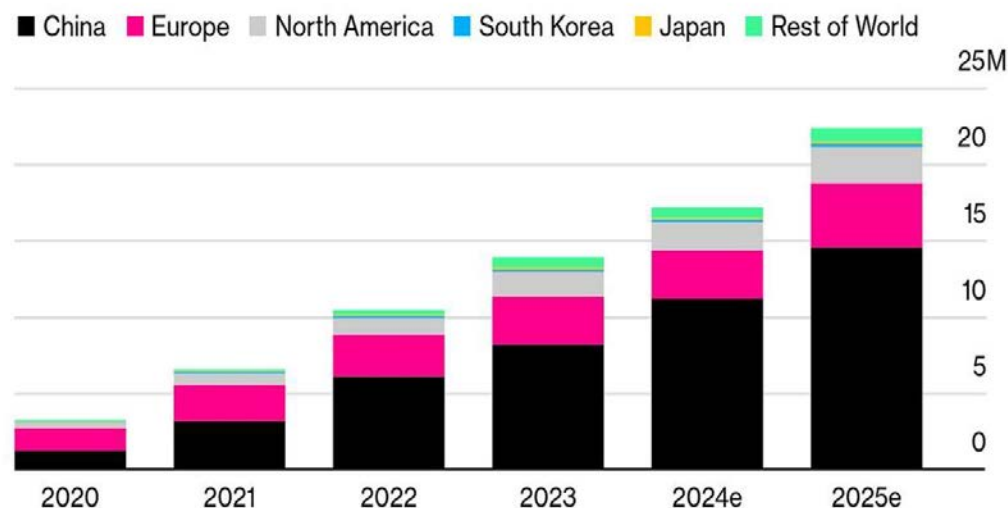
Source: BloombergNEF

Note: Start years differ by sector but all sectors are present from 2020 onward. Most notably, nuclear figures start in 2015 and power grids in 2020. CCS refers to carbon capture and storage.

BloombergNEF

EV Sales Are Expected to Exceed 22 Million

BNEF's outlook for battery-electric and plug-in hybrid cars



Source: BloombergNEF

Bloomberg

Lomiko and the graphite market

EV sector anticipated to grow in the next 5-15 years, driving the need for natural-flake graphite and anode material for use in batteries, energy storage and clean tech

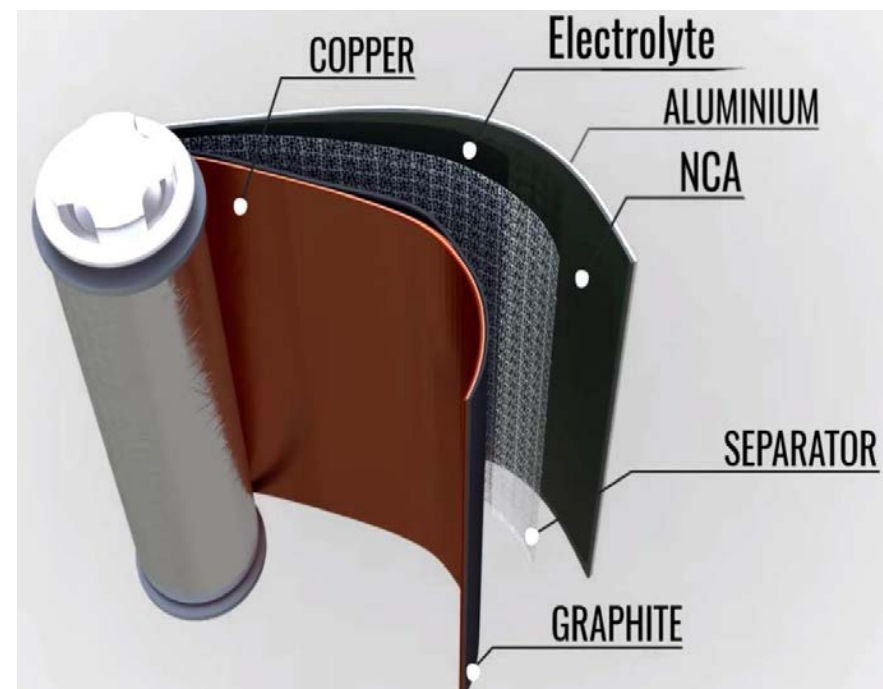
- **Electric Vehicles (EVs)** Lomiko is advancing the qualification process with OEMs and downstream buyers. Polaris and NRC's basic electrochemistry analysis shows potential for La Loutre Flake Graphite to become a feedstock for the anode market.
- **Internal Combustion Engines**—Primary batteries require high-purity micronized flake graphite and qualifications in 18 months.
- **Consumer Goods** - conductive additives for cathode and anode applications in medical devices, aerospace, defence, and industrial at 99.9%Cg for C & D and AA & AAA Battery Formats - 45 & 15 microns
- **Energy Storage** – the fastest-growing sector for grid stabilization, transportation, communications, and aerospace.

				
THERMAL MANAGEMENT Geothermal <i>*Refractories</i> <i>*High End Refractories</i> Crucibles <i>*Hot Metal Toppings</i> <i>*Foundry</i> <i>*HMF- Dispersions</i> Glass	ENGINEERED PRODUCTS <i>*Friction</i> <i>*Powder Metallurgy</i> <i>*Graphite Foils</i> <i>*Fire Retardants</i> <i>*Agriculture</i> <i>*Ceramics</i> <i>*Semiconductor</i> <i>*MIL-SPEC</i> <i>*Carbon Brush</i> <i>*Pencil</i>	LUBRICANTS <i>*Grease</i> <i>*Dry Powders</i> <i>*Seed Lubes</i> <i>*Rail Lubes</i> <i>*Dispersions</i> <i>*MIL-SPEC</i> <i>*Nuclear Grade Lubes</i> <i>*Drilling Fluids</i>	ENERGY STORAGE <i>*Alkaline Batteries</i> <i>*Lead Acid Batteries</i> <i>*Li-Ion Batteries – Cathode</i> <i>*Li-Ion Batteries - Anode</i> Fuel Cells <i>*DOD & DOE</i> <i>*E-Bikes</i> <i>*ESS</i>	PLASTIC, POLYMERS, RUBBER <i>*Conductive Plastics</i> <i>*Conductive Coatings</i> <i>*Bushings & Seals</i> Antistatic Flooring <i>*PEEK</i> <i>*PTFE</i> <i>*Rubber</i> Electronics Packaging <i>*Thermal Plastics</i> <i>*Power Generation</i>
<i>* Applications - initial targets; qualifying lab samples is the first step; next step commercial bulk samples (customer paid) immediate revenues.</i>				

Grants and Awards – Non-dilutive capital

Secured CA\$16m in concurrent Canadian and USA funding - **more than 50%** of project costs are supported by awards

- ✓ These are **non-dilutive non-repayable awards**
- ✓ **Awards Canadian \$4.9m** contribution from Natural Resources Canada – 75% cost contribution **for anode piloting**
- ✓ Recipient of a **US\$8.35m (CA\$11.2m)** R&D (Research & Development) technology investment agreement from the United States of America Department of Defense (“DoD”)
- ✓ **The DoD grant**, called a Technology Investment Agreement (“TIA”) supports studies for La Loutre to complete pre-feasibility (PFS), baseline and metallurgical studies and a definitive feasibility study (DFS)
- ✓ Announcements are part of the joint Canada-U.S. Energy Transformation Task Force



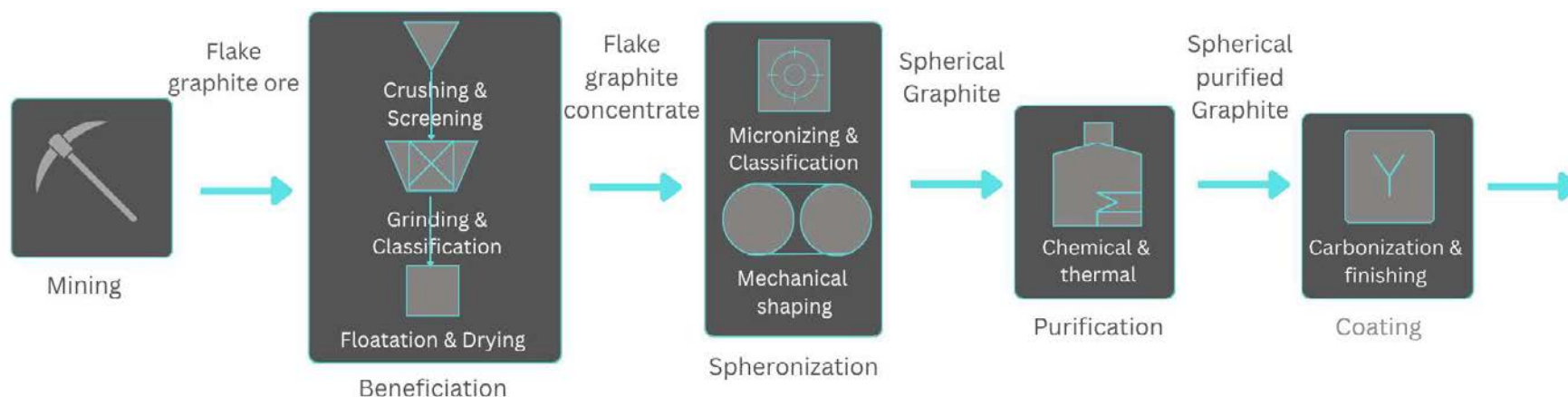
Source: Monday Note

Summary of the CMRDD program administered by Natural Resources Canada – Anode Upgrading Pilot Program



Award: **CAN\$4.9m**

- The CMRDD program administered by Natural Resources Canada is to pilot the integrated graphite upgrading process with a 200 mt bulk sample over 3 years for a total contribution agreement of CA\$6.6m where Lomiko will contribute 25% of this funding
- All work and equipment will be in a Canadian lab setting
 - Task 1: Crushing, grinding and flotation of La Loutre graphite
 - Task 2: Chemical and thermal purification of graphite concentrate
 - Task 3: Micronization and spheriodization of the flotation concentrate
 - Task 4: Carbon coating of purified graphite

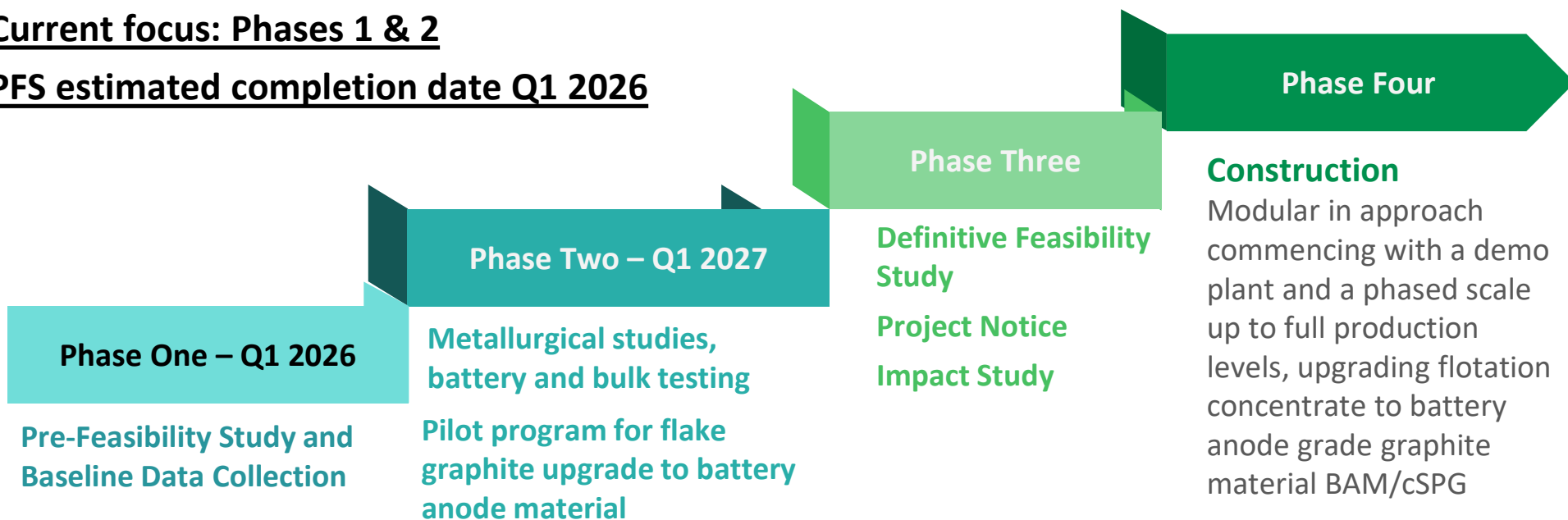


Source: Lomiko

La Loutre development timeline

A de-risked path to the development of this strategic critical mineral asset

- The U.S. DoD has provided a TIA for 50% of the study costs, and NRCAN is contributing **75%** of the pilot program costs, significantly de-risking the project.
- **Current focus: Phases 1 & 2**
- **PFS estimated completion date Q1 2026**



La Loutre Graphite

Lomiko advantage: Ranked as the seventh biggest deposit worldwide by Mining.COM

	Property	Country	Owner	Development Status	M+I Resources (mt)	Grade (%)	Contained Graphite (mt)
1.	Balama/Nicanda Hill	Mozambique	Triton Minerals Ltd	Stalled (previously Feasibility)	369	11.3	41.7
2.	Sarytogan	Kazakhstan	Sarytogan Graphite Limited	Prefeasibility	126	28.8	36.3
3.	Lac Gueret (Uatnan)	Canada	Mason Resources Inc	PEA	66	17.19	11.3
4.	Mahenge	Tanzania	Black Rock Mining Ltd	Permitting	116	8.02	9.3
5.	Siviour	Australia	Renascor Resources Limited	Permitting	73	7.14	5.2
6.	Epanko	Tanzania	EcoGraf Ltd	Permitting	63	7.6	4.8
7.	La Loutre	Canada	Lomiko Metals Inc	Prefeasibility	65	4.5	2.9
8.	Malingunde	Malawi	NGX Limited	Prefeasibility	37	7.37	2.7
9.	Balama Central	Mozambique	Tirupa Graphite plc	Permitting	27	10.24	2.7
10.	Bunyu	Tanzania	Volt Resources Limited	Feasibility	40	5.64	2.3

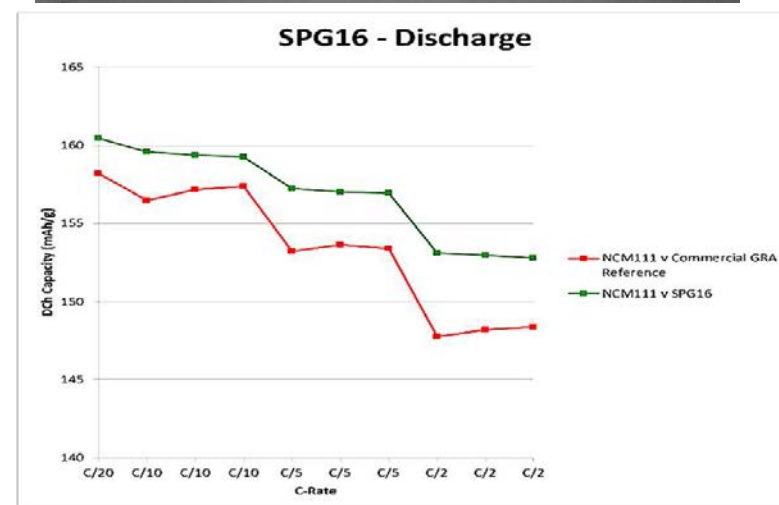


The independent and qualified persons for the mineral resource estimate, as defined by NI 43 101, are Marina Iund, P.Geo. (InnovExplo Inc.), Martin Perron, P.Eng. (InnovExplo Inc.), Simon Boudreau, P.Eng. (InnovExplo Inc.) and Pierre Roy, P.Eng. (Soutex Inc.). The effective date of the estimate is May 11, 2023.

Source: [Mining.com](https://www.mining.com)

La Loutre single-layer pouch full-cell battery testing surpassed commercial graphite results

- ✓ Demonstrated that La Loutre material is suitable for battery applications – single layer pouch full cell battery testing completed with Polaris Battery Labs, LLC, USA.
- ✓ The single-layer pouch cells constructed with La Loutre graphite anode and standard cathode material: cSPG16 and cSPG20 samples from La Loutre reveal strong performance of the La Loutre cSPG with better discharging capacity compared to commercial graphite material in North America today (358-367mAh) depending on the purification methods
- ✓ Both samples were put through a brief life cycle analysis for 25 cycles at C/2 and performed well.
- ✓ Figure top - Lomiko graphite Single layer pouch batteries produced and tested by Polaris
- ✓ Figure bottom - SPG20 sample from La Loutre has better charging/discharging capacity compared to commercial graphite in the market today in North America.



All metallurgical and battery testing data were reviewed by the independent QP Oliver Peters, P. Eng from MetPro.

Next Steps – Phase 1

Engineering phase in full swing for pre-feasibility study (PFS)

Estimated PFS finish date: Q1 2026, *subject to access to capital*

☐ **Completed PFS Components**

- ✓ Finished Mineral Resource Estimate
- ✓ Finished pre-feasibility metallurgical testing
- ✓ Finished battery testing at the lab scale

☐ **PFS Components in progress with independent 3rd party experts:**

- DRA Americas as the study Lead – site infrastructure and flotation plant design
- InnovExplo/Norda Stelo – mining and reserves
- Knight-Piesold – geotechnical, geomechanical and hydrology
- SLR – Water balance and water quality modelling
- Maine Water Services – Design water treatment flow

Next Steps – Phase 2

Metallurgical and battery piloting

CRITM Quebec studies – Finish June 2025

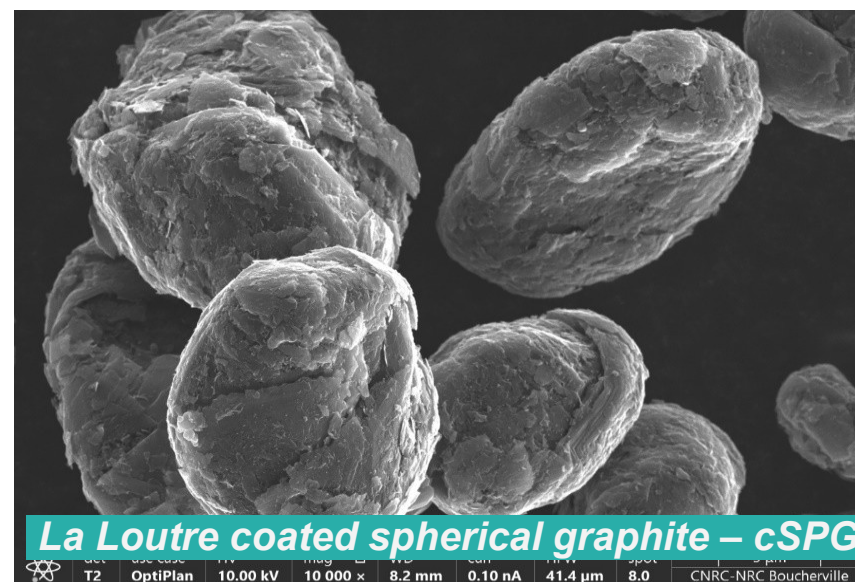
- Processing 1,100kg of the material to generate flotation flakes
- Provide flake concentrate to the downstream groups as part of the qualification process
- Upgrade graphite flakes to anode material/cSPG to create samples for the downstream customers

Initiating the 200-250t bulk sample with local operators and research institutions in Quebec

- **Received Permits for the bulk sample excavation**
- 5 x 50-tonne test locations in EV Zone
- Work to start in the fall
- Hired all local contractors to conduct fieldwork
- Ore will be crushed off-site before being hauled to the research lab

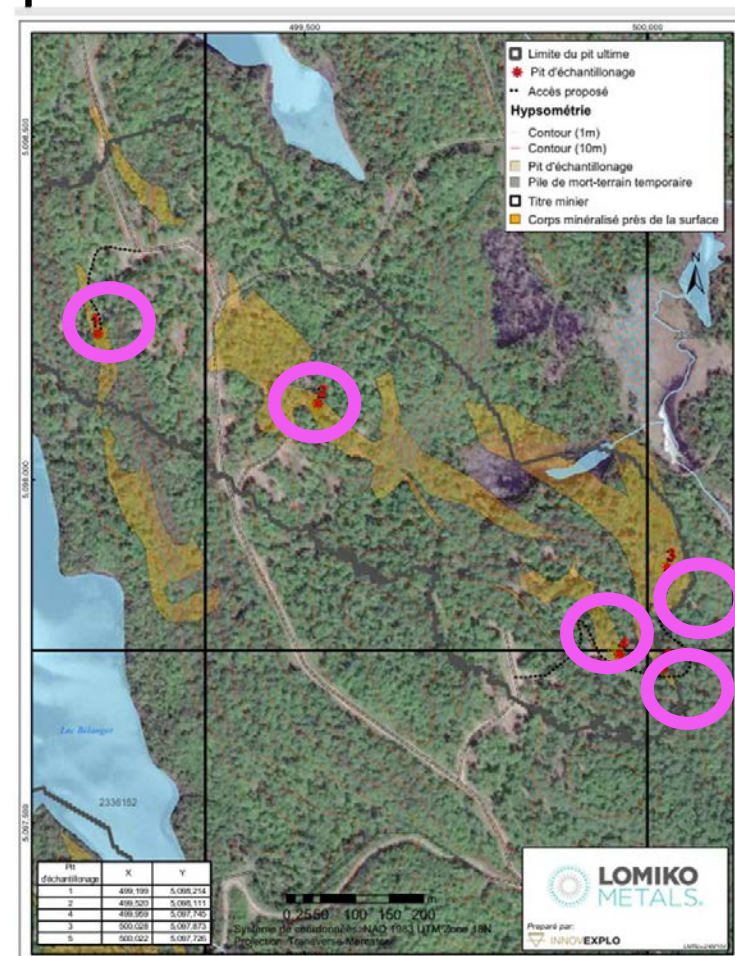
Anode Piloting

- I. Flotation separation testing to produce a flotation concentrate
- II. Purification of the flotation concentrate
- III. Micronization and Spheroidization
- IV. Coating



La Loutre – Permitted Bulk Sample Locations

- DoD and NRC supported- Pilot Processing
 - Testing to be done in EV Zone only
 - Proposed - 5 locations
 - Each Location up to 50 tonnes of ore
 - Road access
 - Three cutting – minimal
 - Stripping – area of approximately 5x5 meters or 4x6m
 - Drill/blast – an area of 3x3 meters about 2.5-3meters deep
 - Mining
 - Haulage from the site to the storage area or the lab
 - Noise monitoring to establish what the audible levels are
- *The information provided by QP Simon Boudreau, P.Eng. (InnovExplo Inc.), who is registered in Quebec and reviewed by Yves Desrosier, from P3 Solutions P.Eng and an independent consultant*



Graphite Portfolio

MINÉRAUX CRITIQUES ET STRATÉGIQUES AU QUÉBEC

Version du 13 février 2020

UN POTENTIEL À EXPLOITER

Graphite

Plusieurs projets de graphite sont en attente de Québec.

- 1 **Lac-des-Îles**
Imerys Graphite et Carbon Canada
Mine active
- 2 **Lac Guérét**
Maxon Graphite
Mise en valeur
- 3 **Matawin**
Nouveau Monde Graphite
Mise en valeur
- A **Lac Knife**
Focus Graphite Inc.
Gîte
- B **La Loutre**
Corporation Métaux Précieux du Québec
Gîte
- C **Miller**
Canada Carbon
Gîte
- D **Bell Graphite**
Saint Jean Carbon
Gîte
- E **Mousseau West**
Gîte

Cobalt et éléments du groupe du platine

Deux mines exploitent le cobalt et les éléments du groupe du platine en sous-produits du nickel.

- 4 **Raglan**
Glencore Canada Corporation
Mine active
- 5 **Nunavik Nickel**
Canadian Royalties Inc.
Mine active
- 6 **Dumont Nickel**
Magneto Investments Limited Partnership
Mise en valeur
- F **Bravo**
Exploration minière Ilen Nunavik Itée
Gîte
- G **Hawk Ridge**
Nickel North Exploration Corp.
Gîte
- H **Lac Menarik**
Harfang Exploration Inc.
Gîte
- I **Lac Rocher**
Victory Nickel Inc.
Gîte
- J **Nisk-1**
Corporation Éléments Critiques
Gîte

Niobium

Le Québec est le deuxième producteur mondial de niobium et le seul de l'hémisphère nord.

- 7 **Niobec**
Niobec
Mine active
- K **Crevier**
Les Minéraux Crevier inc.
Gîte

Titane et vanadium

Le Québec est le premier producteur de titane sous forme d'ilménite au monde.

- 8 **Lac Tio**
Rio Tinto Fer et Titane
Mine active
- 9 **BlackRock**
Métaux BlackRock Inc.
Mise en valeur
- L **Vanadium-Lac Doré**
Vanadium Resource Inc.
Gîte
- M **Maggie**
The Maggie Mines Inc.
Gîte
- N **Iron-T**
Vanadium Corp.
Gîte
- O **Mont Sorcier Iron**
Vanadium One Iron Corp.
Gîte

Lithium

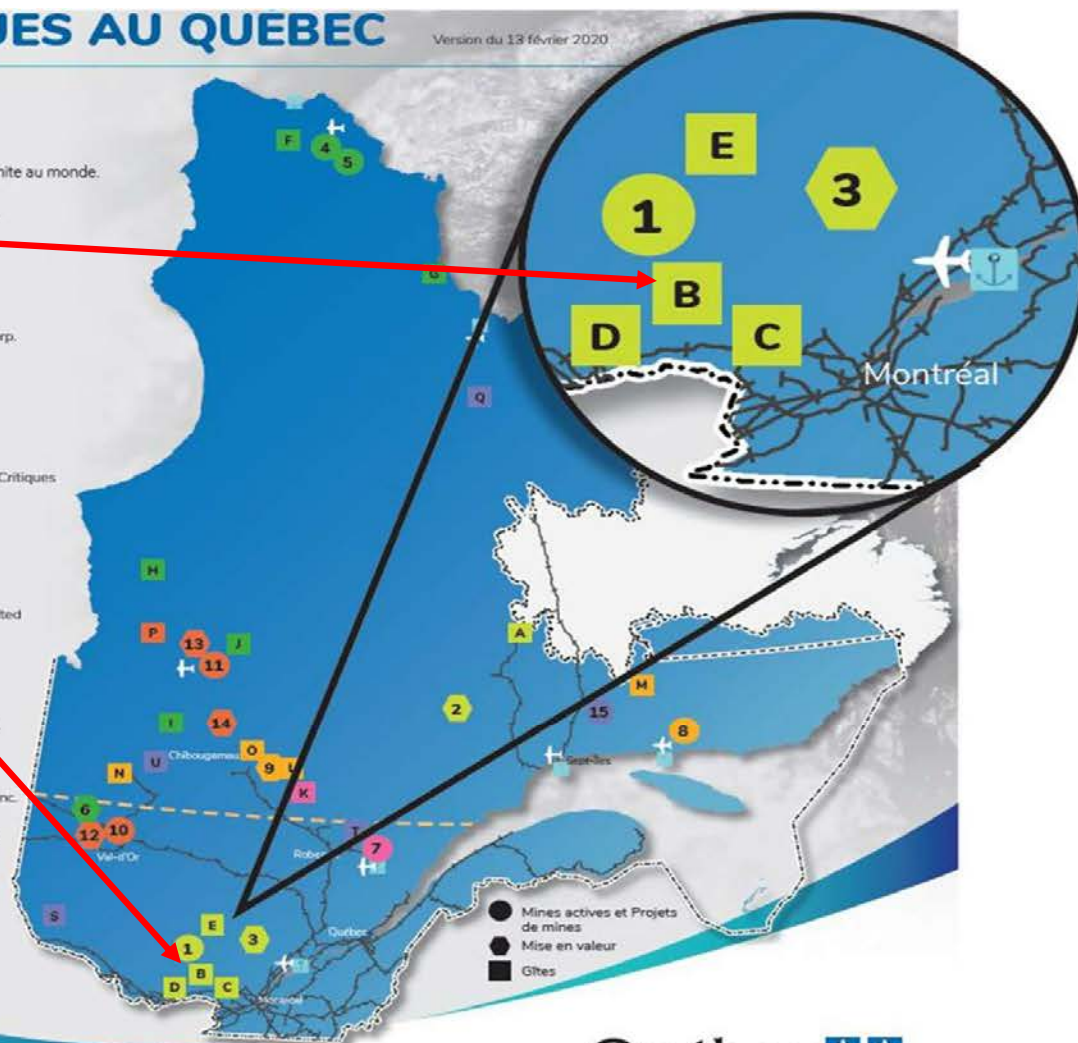
Le Québec détient un potentiel élevé en lithium.

- 10 **Lithium Amérique du Nord**
Lithium Amérique du Nord
Mine en maintenance
- 11 **Whabouchi**
Nemaska Lithium
Construction et rodage
- 12 **Authier**
Sayona Québec
Mise en valeur
- 13 **Rose**
Corporation Éléments Critiques
Mise en valeur
- 14 **Moblan**
Lithium Guo Ao Ltée et SOQUEM inc.
Mise en valeur
- P **James Bay**
Galaxy Resources Limited
Gîte

Éléments des terres rares

Le Québec renferme plusieurs dépôts de terres rares et il est reconnu comme ayant un potentiel à l'échelle mondiale.

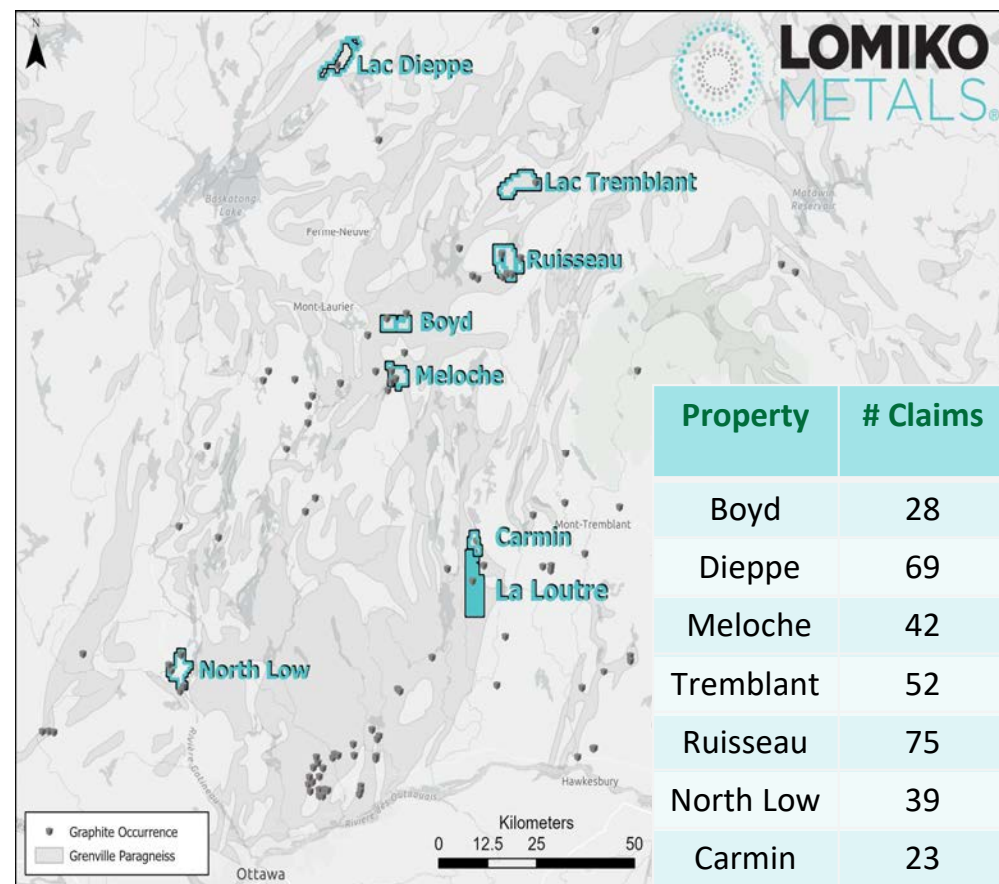
- 15 **Kwyjibo**
SOQUEM
Mise en valeur
- Q **Eldor (Ashram)**
Commerce Resources Corporation
Gîte
- R **Strange Lake - Zone B**
Métaux Torngat Itée
Gîte
- S **Kipawa (Zeus)**
Corporation Métaux Précieux du Québec et Ressources Québec inc.
Gîte
- T **Niobec - REE Zone**
Niobec inc.
Gîte
- U **Carbonatite de Montviel**
Ressources Géoméga inc.
Gîte



Regional exploration in Grenville belt

Most prospective graphite belt in North America

- 328 claims in total on 7 early-stage projects covering 18,622 hectares in southern Quebec.
- 2024 Field Program results for Meloche, Dieppe, Tremblant and Ruisseau:
- Ruisseau – grades up to 27.9 percent carbon graphite (“% Cg”) from four distinct high grade mineralized zones that are over 3km long;
- Meloche – grades up to 13.3% Cg from two distinct mineralized clusters;
- Tremblant – grades up to 11.6% Cg from numerous, widespread spot anomalies; and
- Dieppe – grades up to 6.82% Cg from numerous, widespread spot anomalies and a distinct mineralized cluster.
- Boyd – 8 samples grades range from 5.61%Cg to 17.10 %Cg with all samples above 5.00% Cg
- *The company relied on the independent QP Mark Fekete P.Geo., for all exploration data related to the company’s graphite portfolio*



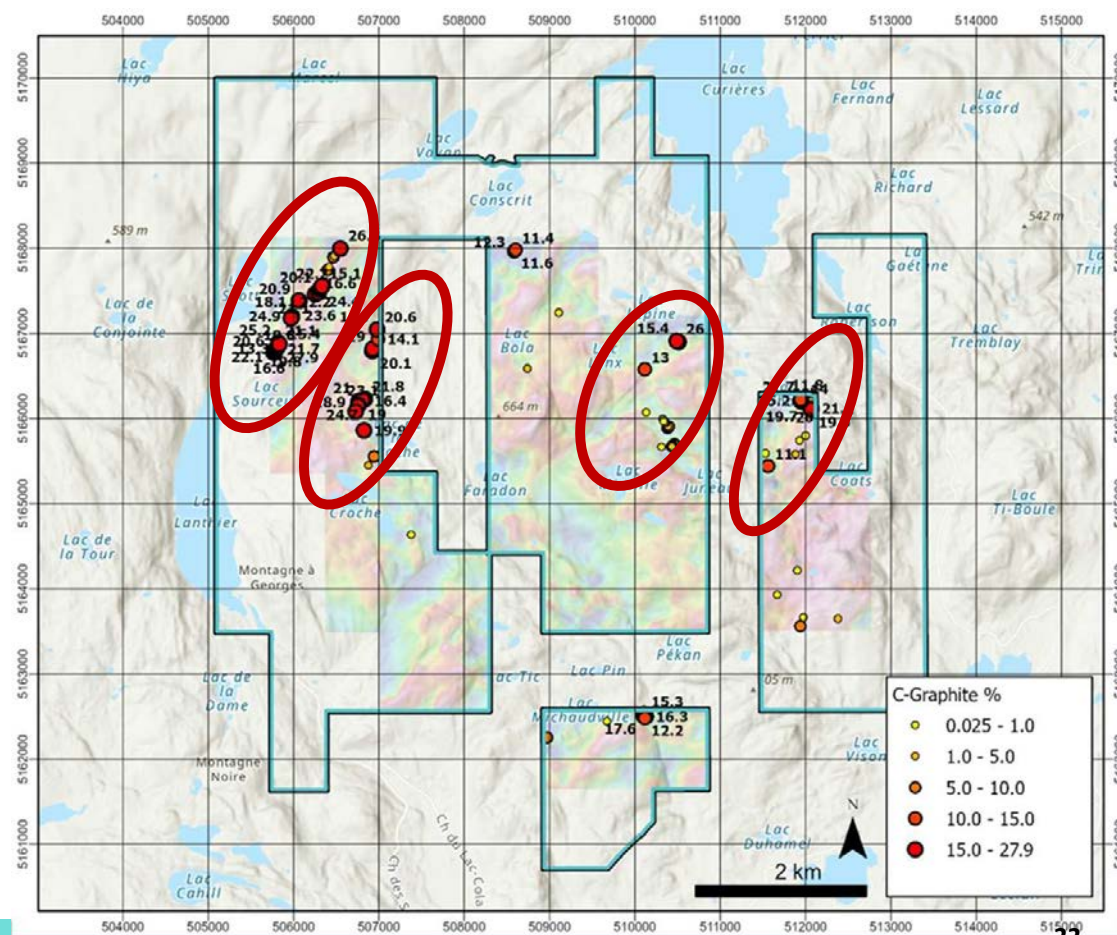
2024 field program discovers 4 zones spanning over 3.0 kilometer long grading up to 27.9% Cg at Ruisseau

A total of 107 grab samples were collected:

- 24 samples returned results greater than 20% Cg,
- 55 samples returned results greater than 10% Cg,
- 71 samples returned results greater than 5% Cg

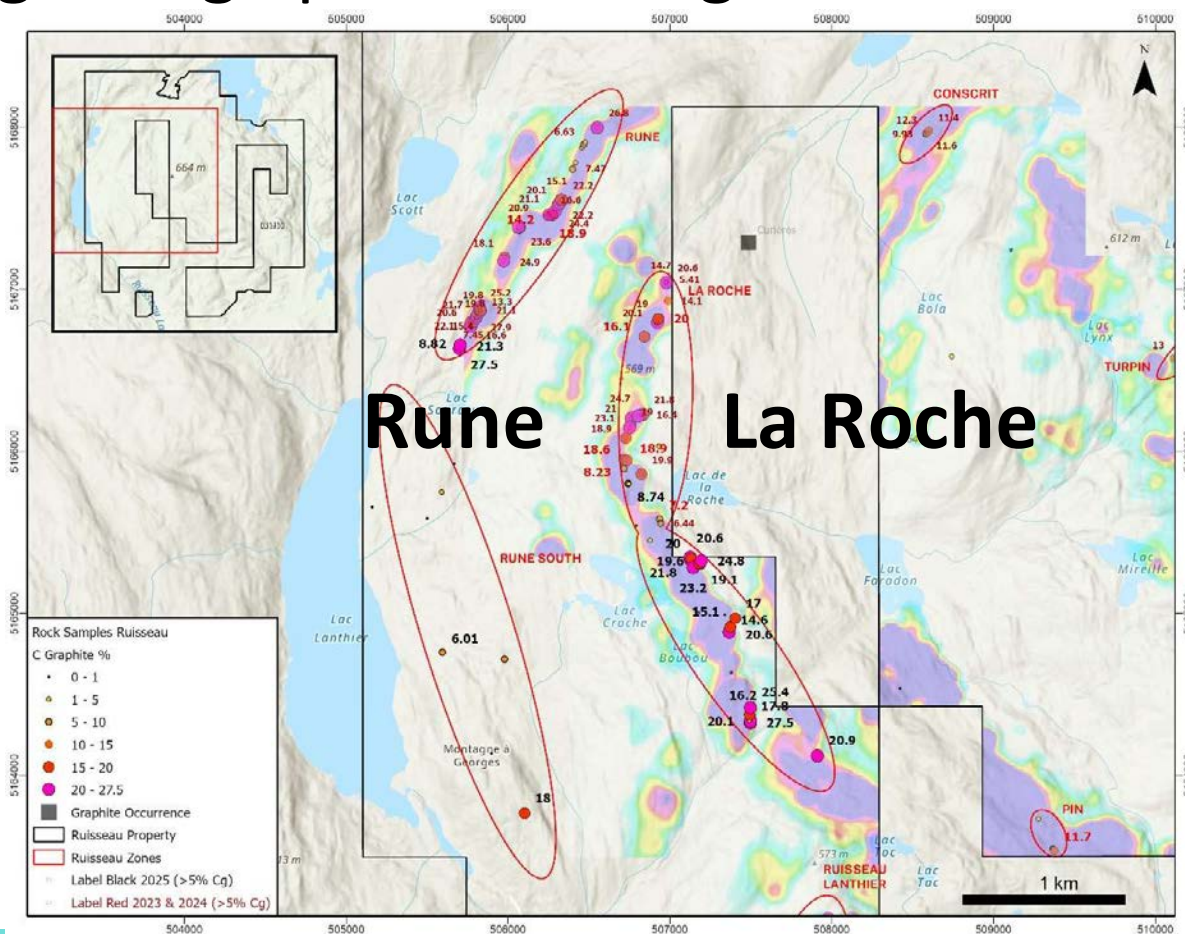
Four distinct high-grade graphite zones outlined:

- the “Northwestern” zone exposed over a distance of 1,500m with maximum values up to 27.9% Cg;
- the “Western” zone exposed over a distance of 1,300m with maximum values up to 24.7% Cg;
- the “Eastern” zone exposed over a distance of 200m with maximum values up to 21.7% Cg;
- the “Southern” zone exposed over 75m exposed with maximum values up to 17.6% Cg.
- *The company relied on the independent QP Mark Fekete P.Geo., for all exploration data related to the company’s graphite portfolio*



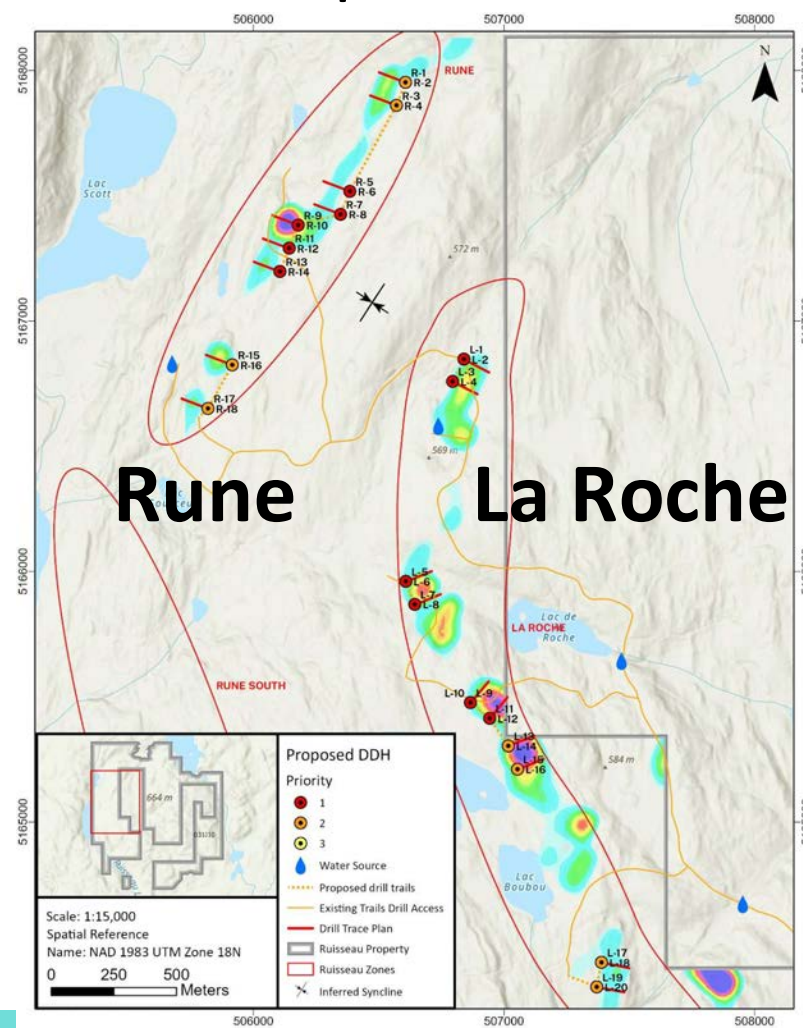
The 2025 field program extends zones Rune and La Roche over 3.0 kilometer long, grading up to 27.5% Cg at Ruisseau

- 2025 sampling along the southern extension of the La Roche TDEM trend was incredibly successful with numerous moderate to high grade results up to a maximum of 27.5% Cg.
- The known strike length of the La Roche graphite zone on the Property was extended from 1,480 metres in 2024 to approximately 3,850 metres.
- The Beep-Mat detected high conductivity over surface widths up to 50 metres in places.
- The La Roche zone is approximately 450 metres east of and runs parallel to the Rune zone
- *The company relied on the independent QP Mark Fekete P.Ge., for all exploration data related to the company's graphite portfolio*



The 2025 field program at Ruisseau Graphite

- A total of five primary and four secondary targets at Rune and six primary and four secondary targets at La Roche have been selected for drill testing.
- The targets were generated with the aid of the 2022 airborne geophysical survey and the strong graphite values obtained from the 2023, 2024 and 2025 prospecting and sampling programs.
- The Company intends to proceed with a 2,500-metre drill program that will test the Priority 1 drill targets at Rune and La Roche.
- Targeting to drill 18 holes at Rune and 20 holes at La Roche.
- Permitting has been initiated with the expectation that drilling can begin in early November 2025.
- *The company relied on the independent QP Mark Fekete P.Geo., for all exploration data related to the company's graphite portfolio*



Antimony Exploration

Antimony

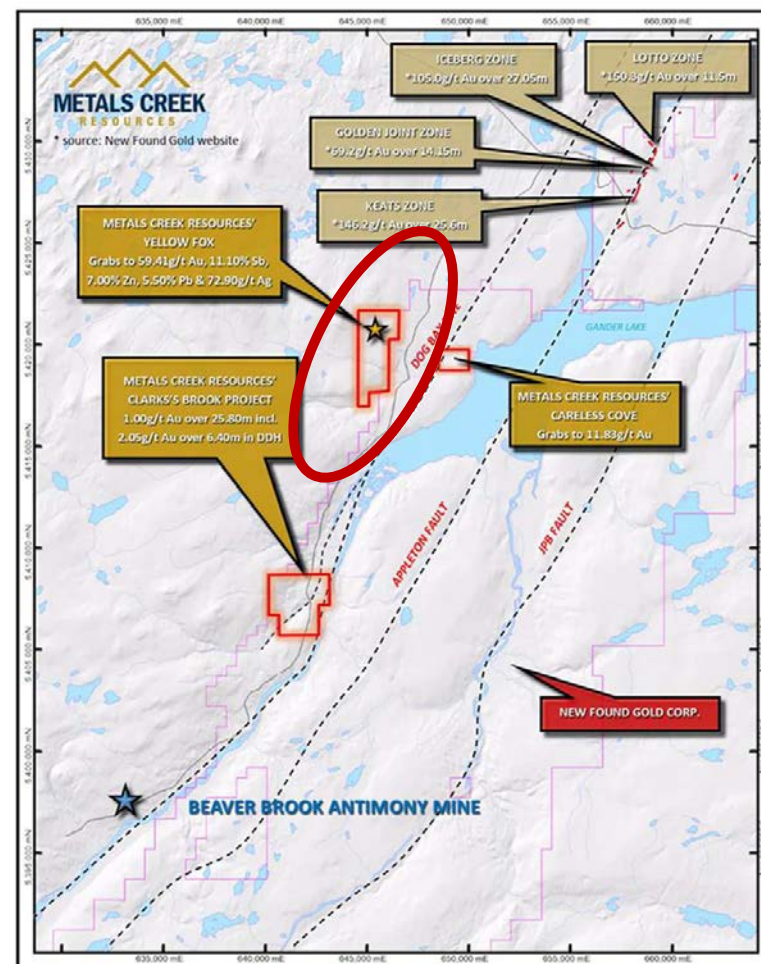
- Antimony is used to increase the hardness of alloys, with lead alloys for batteries, with lead/copper/tin alloys for machine bearings
- It improves the rigidity of lead-alloy plates in lead–acid batteries
- It is also used in automotive clutch and brake parts
- The other major use is as antimony trioxide, which is used for the production of flame retardant chemicals
- Antimony is used in the semiconductor industry for certain silicone wafer, diode, and infra-red detector production
- Small amounts are used in the production of safety matches
- Also, antimony is used in the solar panels



Yellow Fox antimony, silver and gold potential in Newfoundland

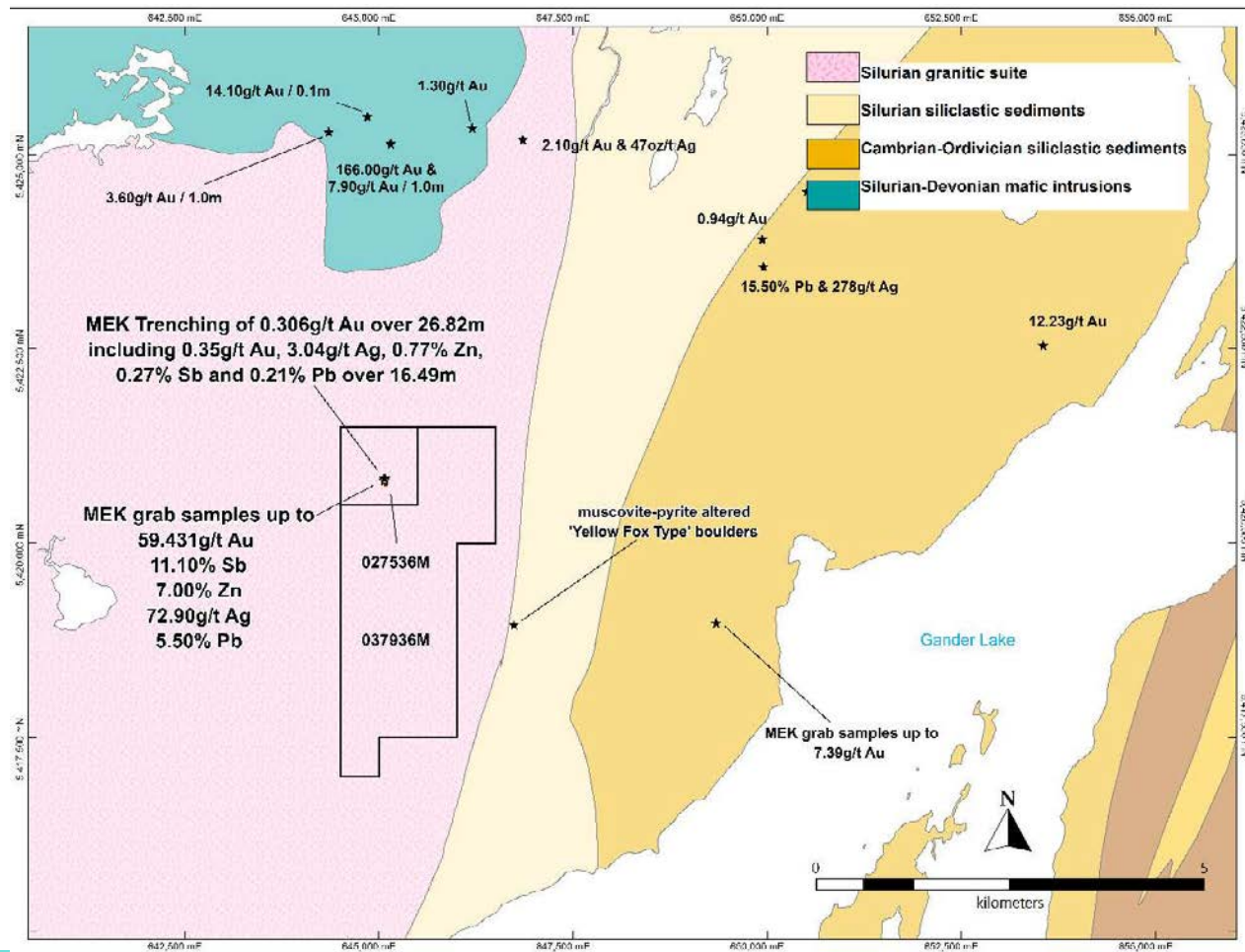
Historic results

- Yellow Fox is an early-stage exploration property prospective in antimony, gold, and silver where historic works returned samples anomalous in gold (Au), antimony (Sb), lead (Pb), zinc (Zn), and silver (Ag).
- The trenching exposed the rocks, resulting in grab samples to 59.43g/t Au, 11.10% Sb, 7.00% Zn, 72.90g/t Ag, and 5.50% Pb in arsenopyrite-stibnite veins within altered monzogranite.
- This property is on the same trend as the past-producing antimony mine Beaver Brook, which is located 25km southwest of the property and on the same trend.
- Geologically, Yellow Fox exhibits similar traits to that of Beaver Brook with cross-cutting structural zones which show intense carbonate alteration with sulphide-bearing stringers to veins of stibnite and arsenopyrite with similar high-grade tenors of antimony, gold, lead, zinc, and silver. Arsenopyrite is also present in both locations.



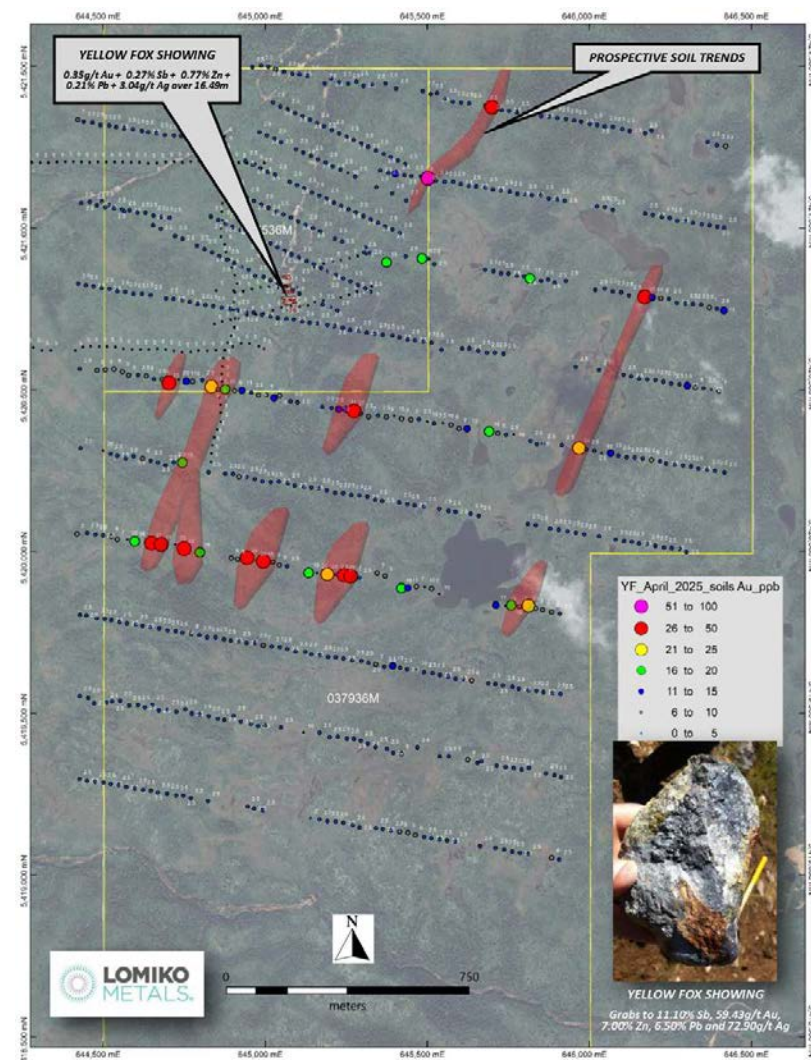
Yellow Fox Next Steps

- Soil sampling program targeted south of the Yellow Fox gold, showing 59.41 g/t and 11.10% Sb areas of increased density of interpreted structures
- Planned an extensive soil sampling program on 1000m long, 250m spaced lines trending approximately 110 degrees, with samples taken every 25m along the line.
- *The information provided by QP Wayne Reid P.Geo. is registered in Newfoundland*

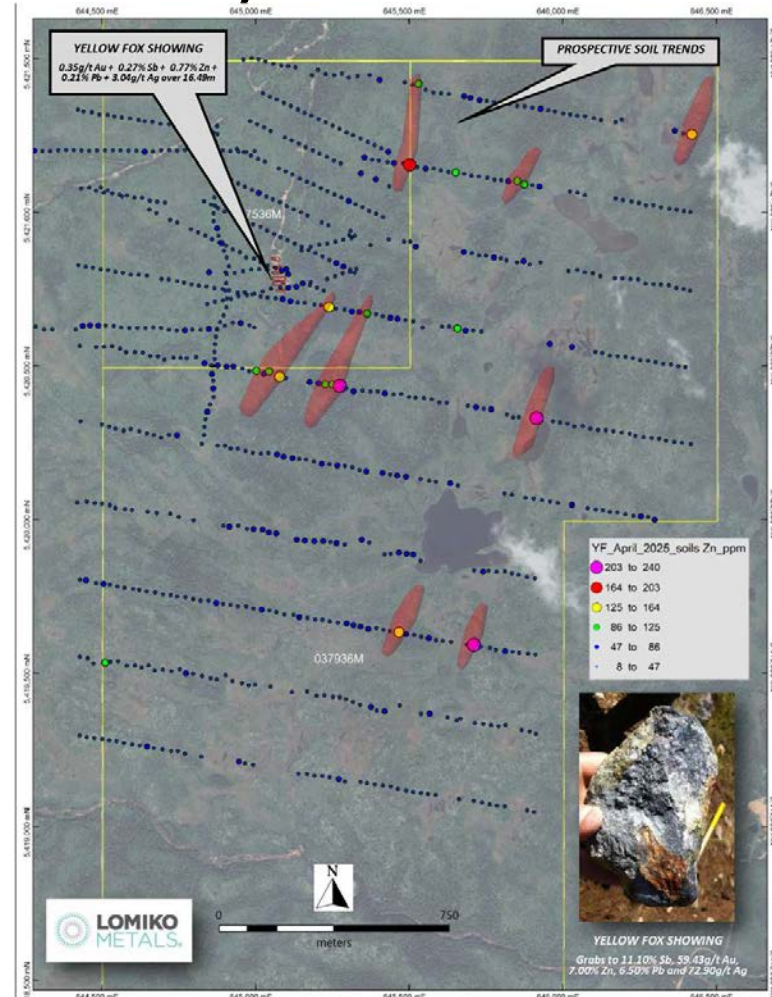
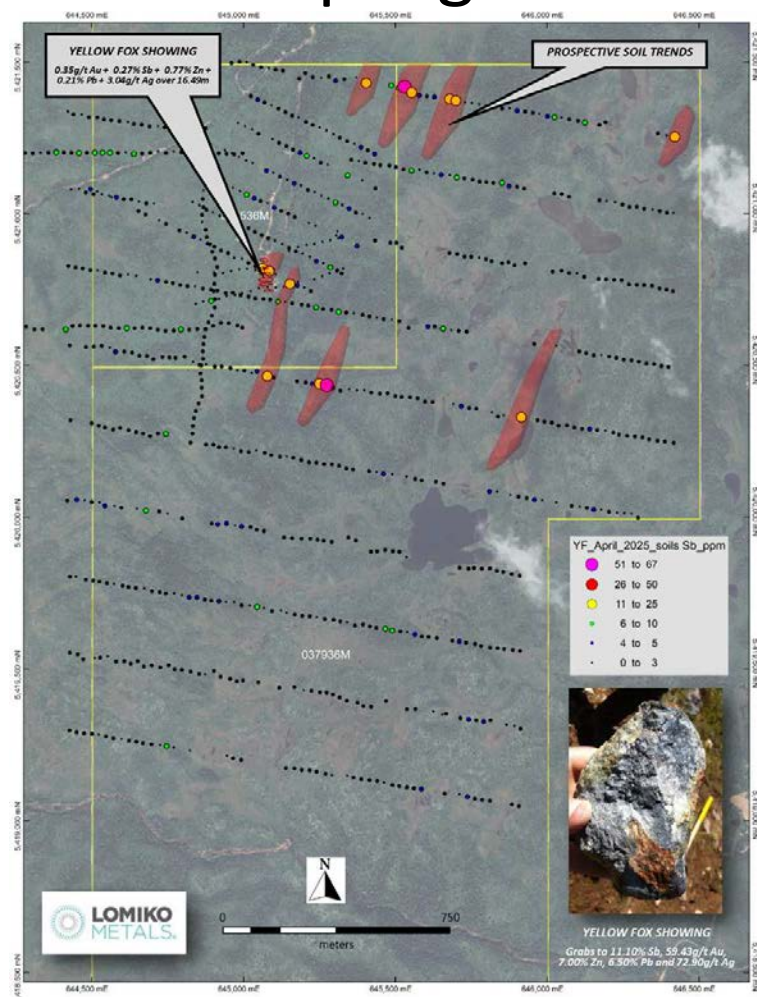


Yellow Fox–Soil Sampling results- Au

- **Phase 1 - Collected** 551 soil samples (red on the map). on ten 250m spaced lines trending 110 degrees.
- New high-priority multi-element targets identified.
- Anomalies are trending roughly the same orientation as Yellow Fox showing.
- Anomalies discovered are close to Yellow Fox Showing Soil sampling program successfully targeted south of Yellow Fox, showing 59.41 g/t gold and areas of increased density of interpreted structures
- Several high-priority targets with a similar trend (015 °) to that of mineralized vein sets at the Yellow Fox showing have been identified.
- *The information provided by QP Wayne Reid P.Geo. is registered in Newfoundland*



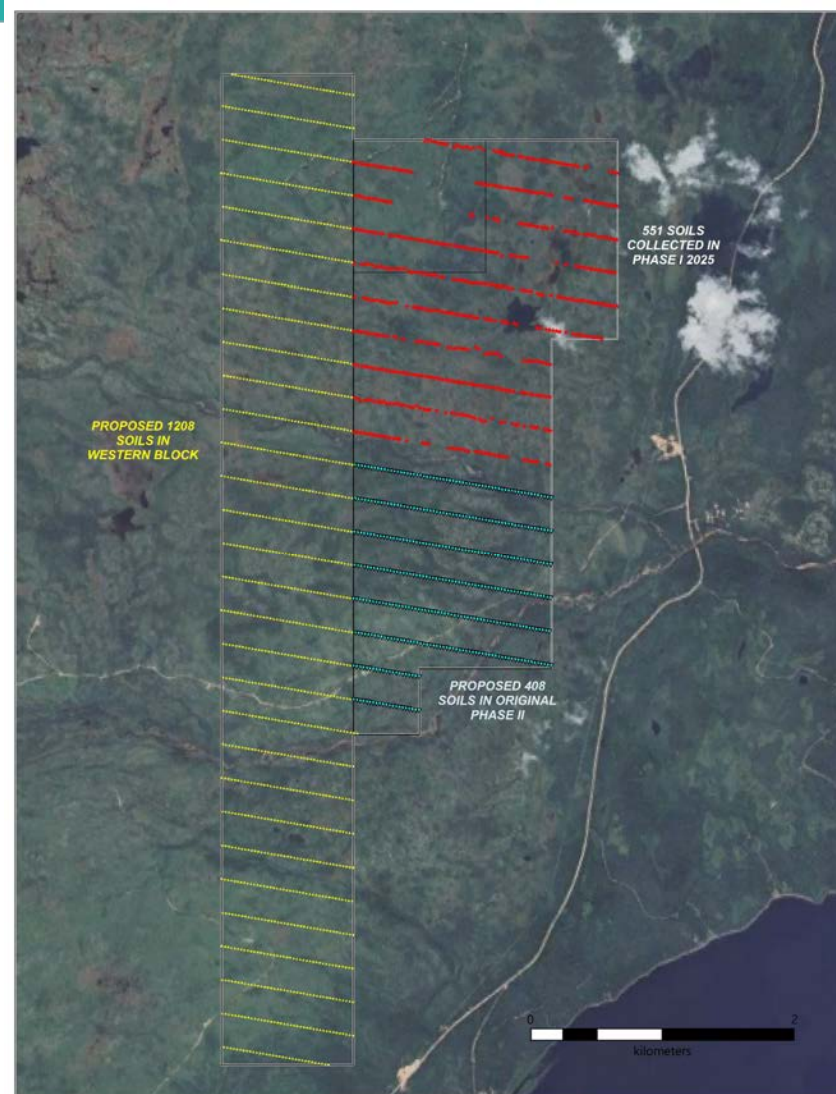
Yellow Fox–Soil Sampling results- Antimony & Zinc



The information provided by QP
 Wayne Reid P.Geo. is registered
 in Newfoundland

Yellow Fox Next Steps

- Expanded the land package (30 claims @ 748ha) and added new targets – total of 58 claims at 1,446 ha
- **Phase 1 - Collected** 551 soil samples (red on the map). Difficulty collecting soils where rock is outcropping.
- Waiting on assays from Eastern Analytical
- **Phase 2** – 408 soil samples to finish the original block (cyan) will see the soil sampling completed on the 250-meter parallel grids at 25-meter spacing covering the southern end of the property.
- **Phase 3** - 1208 samples in the newly added western block (yellow)
- **Phase 4** – geophysical surveys
- *The information provided by QP Wayne Reid P.Geol. is registered in Newfoundland*



Share structure

Share structure

Lomiko has a tight capital structure with 48.7m shares outstanding

- July 28th, 2025

Lomiko Metals Inc

Monday, July 28, 2025

Total Issued and Outstanding	54,716,266
Options	2,033,333
Warrants	19,054,338
Broker Warrants	146,220
DSU	539,398
RSU	1,273,426
Fully Diluted	77,762,981

Lomiko collaborations



CRITM
vecteur de transformation métallique



**Femina
Collective**

corem
Innovation en traitement de minerais
Innovation in mineral processing

**Investissement
Québec**
International

SOQUEM

SGS



**UNIVERSITÉ
LAVAL**

Canada
National Research
Council Canada
Conseil national de
recherches Canada



For more information
info@lomiko.com

Follow us @lomikometals on socials



Yellow Fox antimony, silver and gold potential in Newfoundland

Terms of the Option

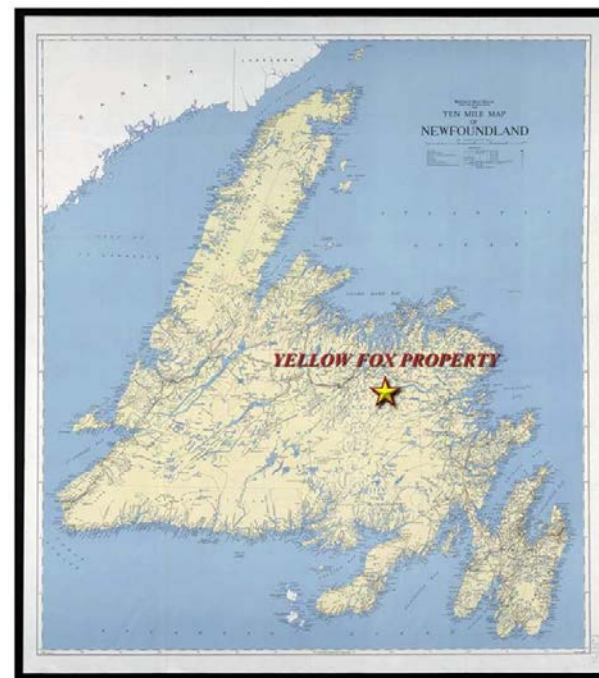
(a) The Optionee shall have the right to acquire 100% of the right, title and interest in and to the Option Interests by making the following payments:

(i) in cash totaling \$70,000, according to the following schedule:

1. on the Closing Date, \$20,000;
2. on or before first anniversary of this Agreement, \$25,000;
3. on or before second anniversary of this Agreement, \$25,000; and

(ii) in common shares of the Optionee (the “LMR Shares”) totaling \$355,000, at a price per LMR Share equal to the Market Price on the date of the signature of this Agreement according to the following schedule:

1. on the Closing Date, \$55,000 payable in LMR Shares;
2. on or before first anniversary of this Agreement, \$125,000 payable in LMR Shares; and
3. on or before second anniversary of this Agreement, \$175,000 payable in LMR Shares.



Graphite Portfolio 2024 Results

Ruisseau 2024 Results

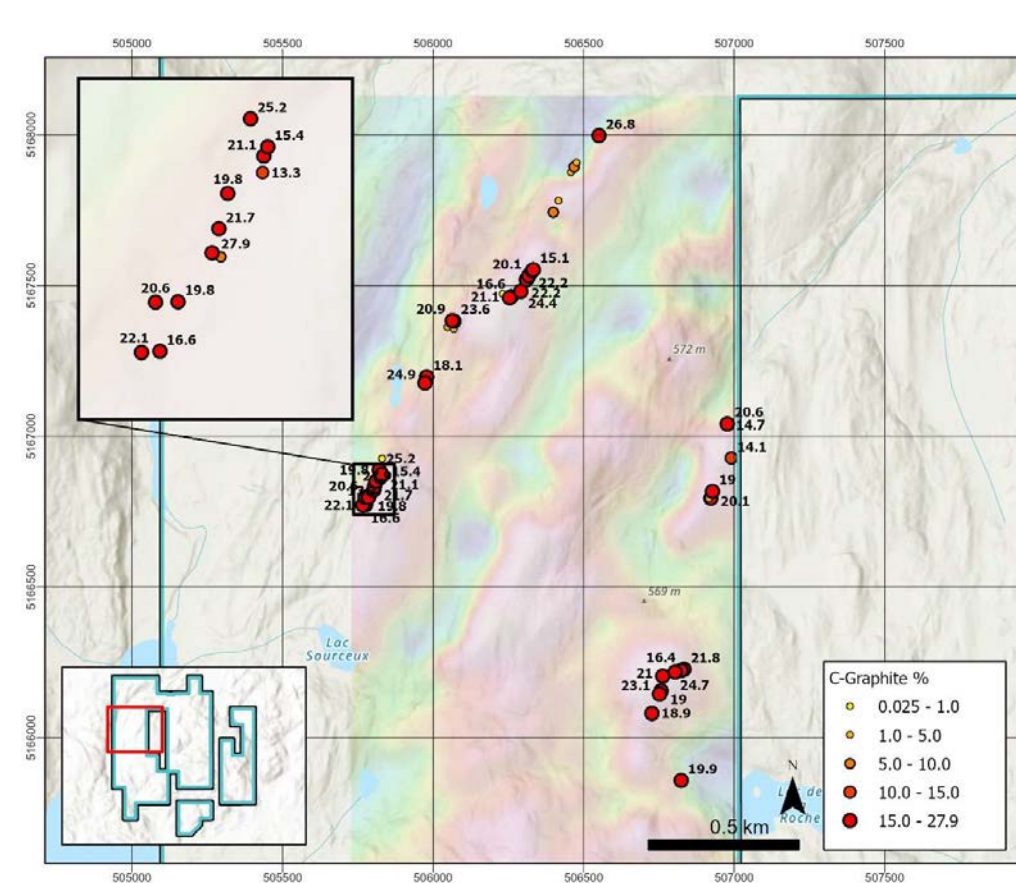


Figure 1a: Ruisseau West Results

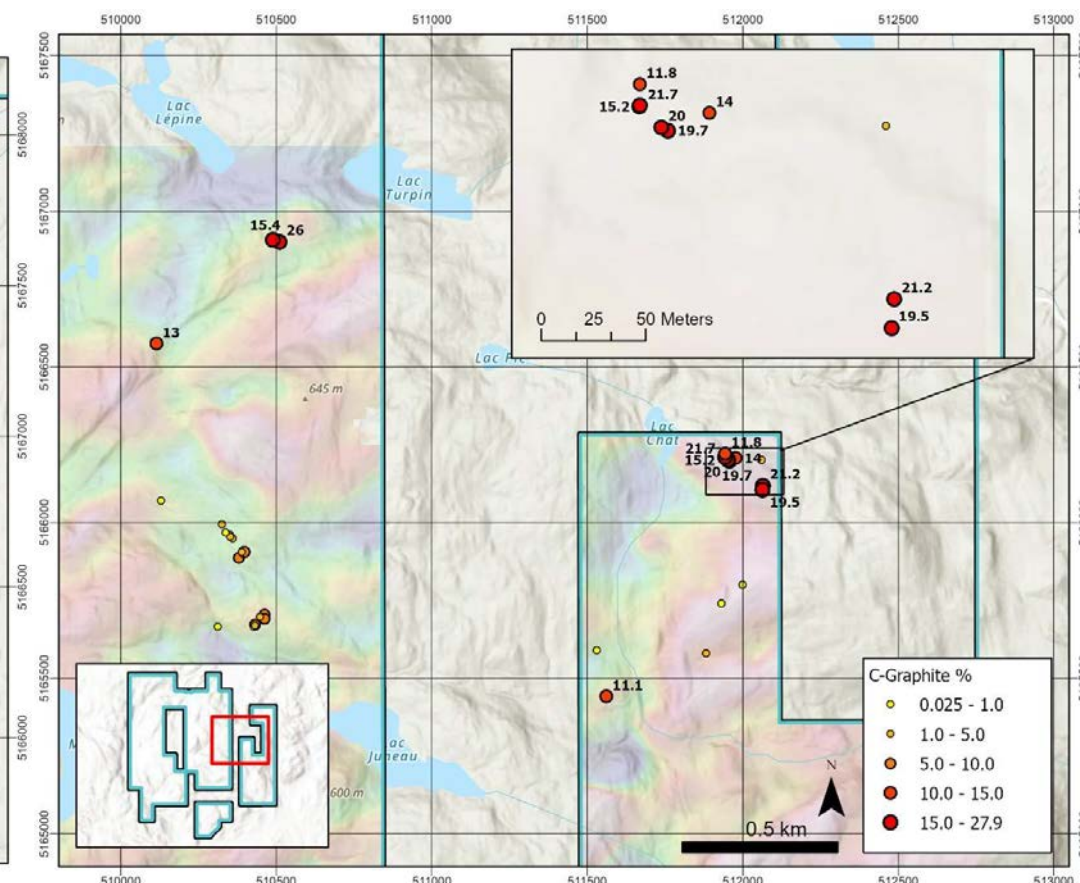
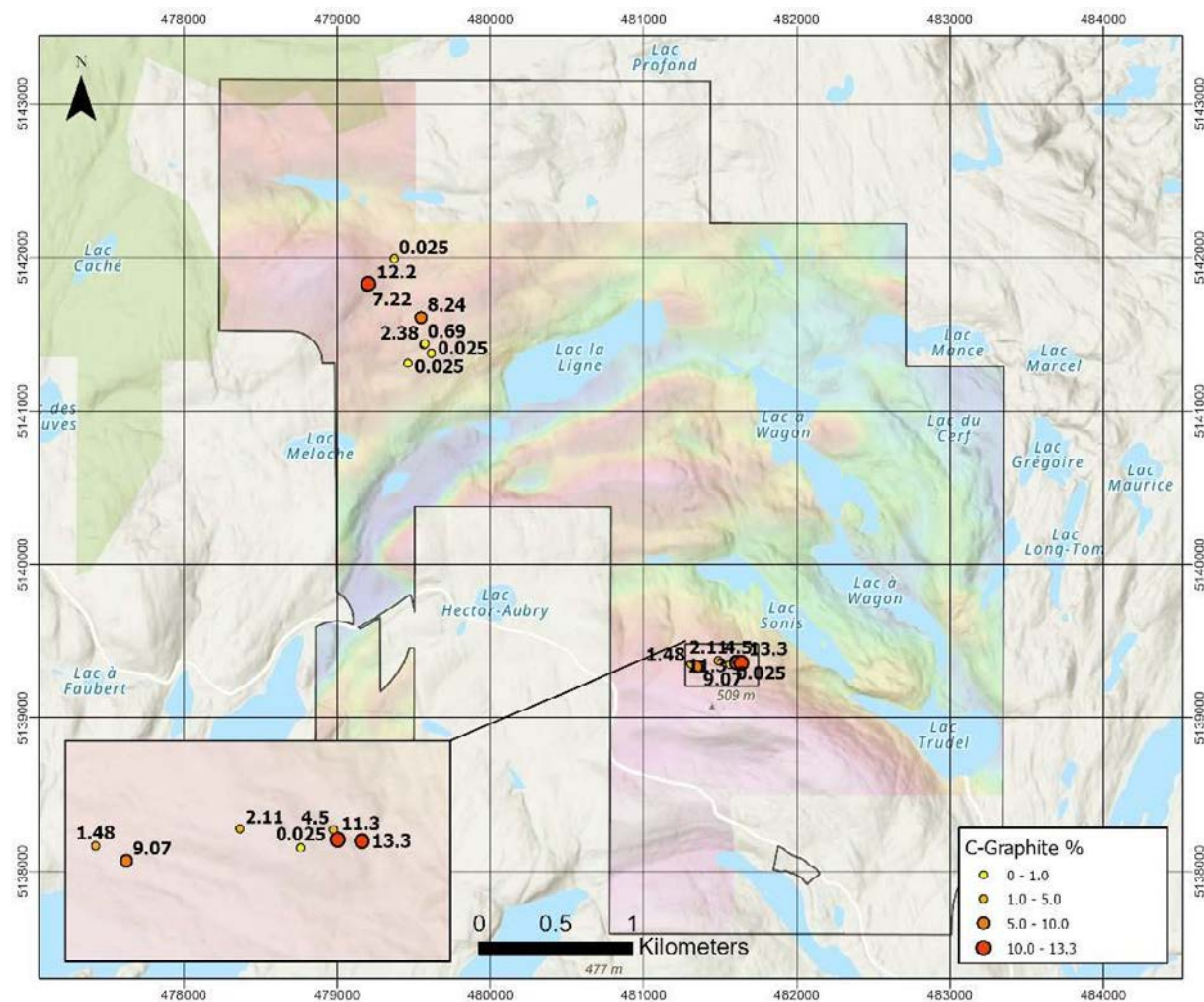
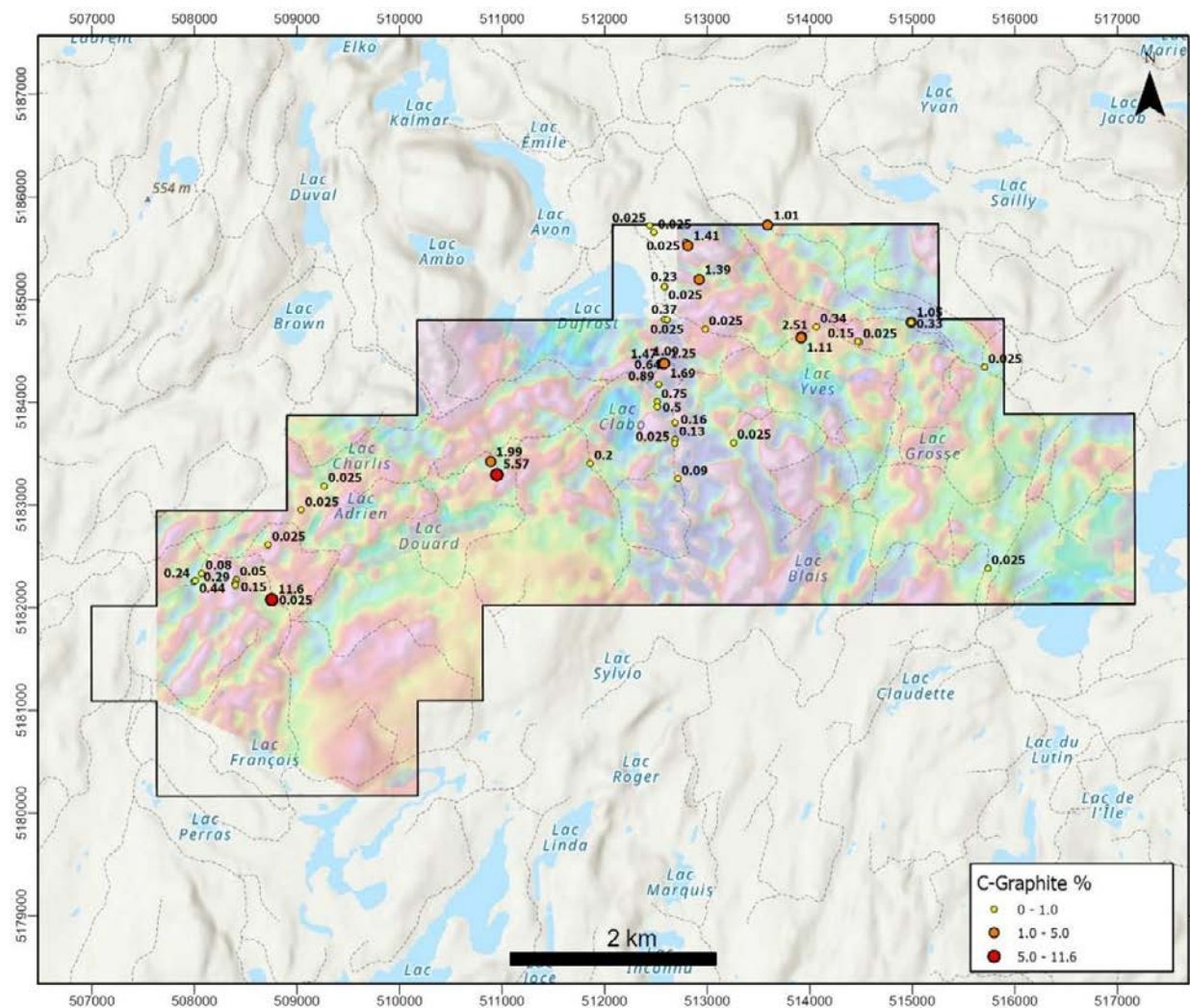


Figure 1b: Ruisseau East Results

Meloche 2024 Results



Tremblant 2024 Results





SGS Characterization Study, 2023

67% fines content in the flotation concentrate

- La Loutre flake distribution is ~67% fines - suitable for anode market **37% growth year over year!**
- 100 mesh is used most commonly in SPG (spherical graphite) as a precursor for battery production

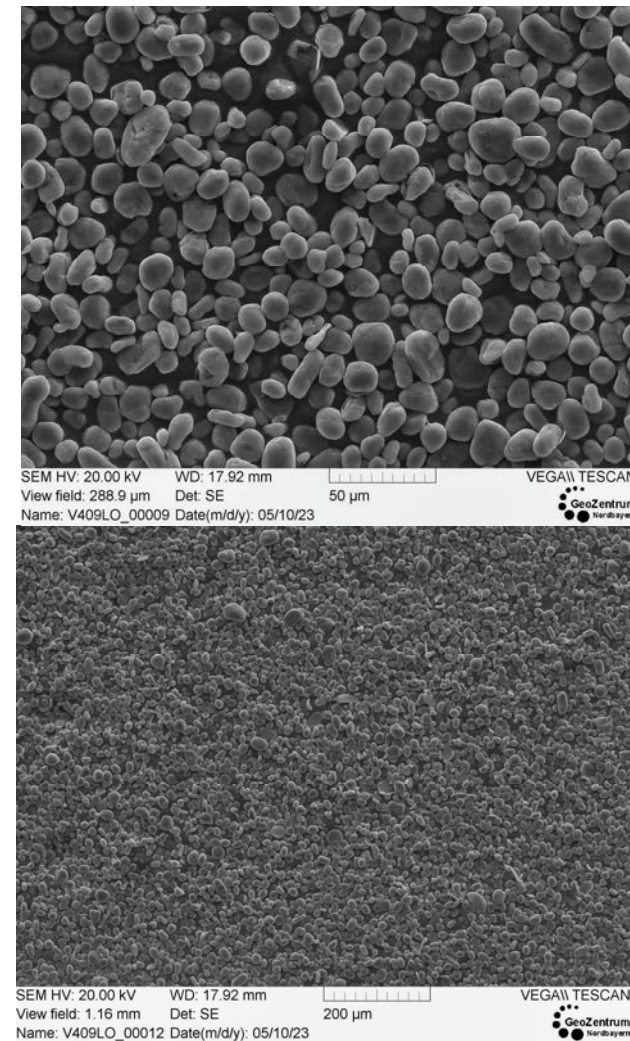


Size Fraction Analysis of Combined Concentrate of LCT – PFS Level MetPro Report Feb 2023

33% of +100 mesh	Size (Mesh)	Size (µm)	Mass (%)	C(t) (%)	C(t) Distribution (%)
	32	500	0.4	98.3	0.4
	48	300	5.6	98.7	5.5
	80	180	18.1	98.3	17.9
	100	150	9.5	98.8	9.4
	150	106	17.0	99.4	17.1
	200	75	18.6	99.6	18.7
	325	45	18.2	99.5	18.2
	-325	-45	12.7	99.1	12.7
	Final Concentrate		100	99.1	100

La Loutre metallurgical program 99.99% purified graphite content

- ✓ Completed PFS level met testing and optimized flow sheet
- ✓ Completed value-added testing with ProGraphite – micronization, spheroidization, and purification:
- ✓ **Proved that La Loutre material is suitable for battery applications - Spherical Graphite production yielded excellent results**
- ✓ **Achieving excellent 99.99%Cg SPG and flake purity**
- ✓ All physical characterization tests produced excellent results
- ✓ Achieved continuous and reliable production of micronized products with homogenous properties.
- ✓ Low specific energy input to convert the La Loutre flotation concentrate to micronized material.



Traditional Graphite Markets Opportunities in addition to EV-ICE and Energy Storage

- **Engineered Products** include electronics, agriculture, automotive, ceramics, government defence, carbon brushes, and fire retardants that use natural flake graphite. Graphite foils in sheets and rolls are used in electronics, nuclear applications, and other thermal management applications in this market group. Standard 95.0% Cg and High Purity 99.9% Cg
- **Expanded graphite** – LL graphite can be used for primary alkaline batteries, ceramics, and other electrochemistry applications. Expanded graphite can be purified through the Cl/thermal process to produce a high-purity product. Lomiko completed the testing on +50 and +80 mesh meeting and surpassing industry-level results
- **Lubricants** –Applications include grease, dispersions, dry, nuclear-grade, aerospace, agriculture, MIL-SPEC, rail and food-grade lubricants. Traditional and advanced graphite powder additives are used in all applications listed with standard 95.0%Cg and high purity 99.9% Cg grades in various mesh sizes and micron PSDs
- **Polymers and Plastics, rubbers, and coatings** will extend the life of consumer devices, automotive tires, reusable plastics, industrial bearings, and plastics used in antistatic films, coatings, and electronic packaging. Graphite powder is used as a lubricant or conductive additive, including power cables, PTFE, PEEK, seals, bearings, coatings, rubber seals, wiper blades, antistatic packaging, thermal plastics and paints. Based on both Corem and PH analytical reports, there are chemical markers of the La Loutre signature that are unique for use in coatings, seals, thermal plastics, and consumer goods.
- **Graphene** Graphene's manufacturing process uses natural flake graphite to produce a single layer, a few layers, and multi-layer plates. applications in high-frequency electronics, bio, chemical and magnetic sensors, ultra-wide bandwidth photodetectors, and energy storage and generation. Lomiko is undertaking studies to determine La Loutre graphite's suitability for graphene production. Graphene is a transparent and flexible conductor used in many high-tech applications.