

**LOMIKO**  
METALS®

A responsible developer of choice  
in Quebec, Canada

A partner of excellence  
in North America

for a shared  
***climate success story***

**June 2024**

All metallurgical technical information was reviewed by  
the independent QP Oliver Peters from MetPro

TSXV: LMR  
OTC: LMRMF  
Frankfurt: DH8C



# DISCLAIMER

This presentation is not a prospectus, offering memorandum or an advertisement and is being provided for information purposes only and does not constitute or form part of, and should not be construed as, an offer or invitation to sell or any solicitation of any offer to purchase or subscribe for any securities of Lomiko Metals Inc. (the “**Corporation**”) in Canada, the United States or any other jurisdiction. Neither this presentation, nor any part of it, nor anything contained or referred to in it, nor the fact of its distribution, should form the basis of or be relied on in connection with or act as an inducement in relation to a decision to purchase or subscribe for or enter into any contract or make any other commitment whatsoever in relation to any securities of the Corporation.

This presentation contains "forward-looking information" within the meaning of the applicable Canadian securities legislation that is based on expectations, estimates, projections and interpretations as at the date of this presentation. The information in this presentation about the Corporation; and any other information herein that is not a historical fact may be "forward-looking information" (“**FLI**”). All statements, other than statements of historical fact, are FLI and can be identified by the use of statements that include words such as "anticipates", "plans", "continues", "estimates", "expects", "may", "will", "projects", "predicts", "proposes", "potential", "target", "implement", "scheduled", "intends", "could", "might", "should", "believe" and similar words or expressions. FLI in this presentation includes, but is not limited to: the Corporation's objective to become a responsible supplier of critical minerals, exploration of the Corporation's projects, including expected costs of exploration and timing to achieve certain milestones, including timing for completion of exploration programs; the Corporation's ability to successfully fund, or remain fully funded for the implementation of its business strategy and for exploration of any of its projects (including from the capital markets); any anticipated impacts of COVID-19 on the Corporation's business objectives or projects, the Corporation's financial position or operations, and the expected timing of announcements in this regard. FLI involves known and unknown risks, assumptions and other factors that may cause actual results or performance to differ materially. This FLI reflects the Corporation's current views about future events, and while considered reasonable by the Corporation at this time, are inherently subject to significant uncertainties and contingencies. Accordingly, there can be no certainty that they will accurately reflect actual results. Assumptions upon which such FLI is based include, without limitation: current market for critical minerals; current technological trends; the business relationship between the Corporation and its business partners; ability to implement its business strategy and to fund, explore, advance and develop each of its projects, including results therefrom and timing thereof; the ability to operate in a safe and effective manner; uncertainties related to receiving and maintaining exploration, environmental and other permits or approvals in Quebec; any unforeseen impacts of COVID-19; impact of increasing competition in the mineral exploration business, including the Corporation's competitive position in the industry; general economic conditions, including in relation to currency controls and interest rate fluctuations.

The Corporation's actual results, programs and financial position could differ materially from those anticipated in such FLI as a result of numerous factors, risks and uncertainties, many of which are beyond the Corporation's control. These include, but are not limited to: the market for critical minerals; the evolution of supply and demand for critical minerals; the Corporation's projects may not be explored or developed as planned; uncertainty relating to possible cost-overruns in implementing its business strategy and developing its projects; market prices affecting development of the projects; the availability and ability to secure adequate financing and on favourable terms; inability to obtain required governmental permits; any limitations on operations imposed by governments in the jurisdictions where we operate; technology risk; inability to achieve and manage expected growth; political risk associated with foreign operations; changes in government regulations, including currency controls; changes in environmental requirements; failure to obtain or maintain necessary licenses, permits or approvals; risks associated with COVID-19; insurance risk; litigation risk; receipt and security of mineral property titles and mineral tenure risk; changes in project parameters; uncertainties associated with estimating mineral resources and mineral reserves in the future, including uncertainties regarding assumptions underlying such estimates; whether mineral resources (if any) will ever be converted into mineral reserves; opposition to exploration and/or development of the projects; surface access risk; geological, technical, drilling or processing problems; health and safety risks; unanticipated results; unpredictable weather; unanticipated delays; reduction in demand for minerals; intellectual property risks; dependency on key personnel; workforce and equipment availability; currency and interest rate fluctuations; and volatility in general market and industry conditions.

This Presentation has not been independently verified and the information contained within may be subject to updating, revision, verification and further amendment. Except as otherwise provided for herein, neither the Corporation, nor its directors, officers, shareholders, agents, employees or advisors give, has given or has authority to give, any representations or warranties (express or implied) as to, or in relation to, the accuracy, currency, reliability or completeness of the information or opinions in this Presentation, or any revision thereof, or of any other written or oral information made or to be made available to any interested party or its advisers and liability therefore is expressly disclaimed for any loss howsoever arising, directly or indirectly, from any use of such information or opinions or otherwise arising in connection therewith.

Except as may be required by applicable law, in furnishing this presentation, the Corporation does not undertake or agree to any obligation to provide the recipient with access to any additional information or to update this presentation or to correct any inaccuracies or omissions. Information contained in this presentation is the property of the Corporation and it is made available strictly for the purposes referred to above.

# Land Acknowledgement

The land/projects where we operate are located within the traditional land of the Algonquin Anishnaabeg and Cree Eeyou Istchee Peoples.

Our vision is to embrace Indigenous people and Indigenous values within our projects to develop a sustainable approach on our path to critical minerals development, while honouring the lives, memories, and hopes of all seven generations close.

The La Loutre graphite project site is located within the Kitigan Zibi Anishinabeg (KZA) First Nation's territory. The KZA First Nation is part of the Algonquin Nation and the KZA traditional territory is situated within the Outaouais and Laurentides regions.

The Bourrier lithium project site is located south-east of the Eeyou Istchee James Bay territory in Quebec, near Nemaska Lithium and Critical Elements.



# Sustainability is at the heart of our core values

**Cindy Valence appointed to Chief Sustainability Officer.** Cindy resides in the Laurentides region in Quebec, Canada and has vast experience and applied knowledge of the energy transition sector

❖ Three strategic pillars:

1. Full integration in the battery value chain in Québec and North America
2. Regional approach and open to M&A
3. Responsible operator of choice in Québec & Canadian critical minerals

❖ Excellence, Respect, and Ingenuity drive all day-to-day decisions.

❖ People first company: Our approach is based on open discussion, understanding and collaboration with local communities to create a fully responsible and sustainable project.

❖ Inclusive and diverse operations at all levels: 50% of directors are women and 3 of 4 Executive Officers are female

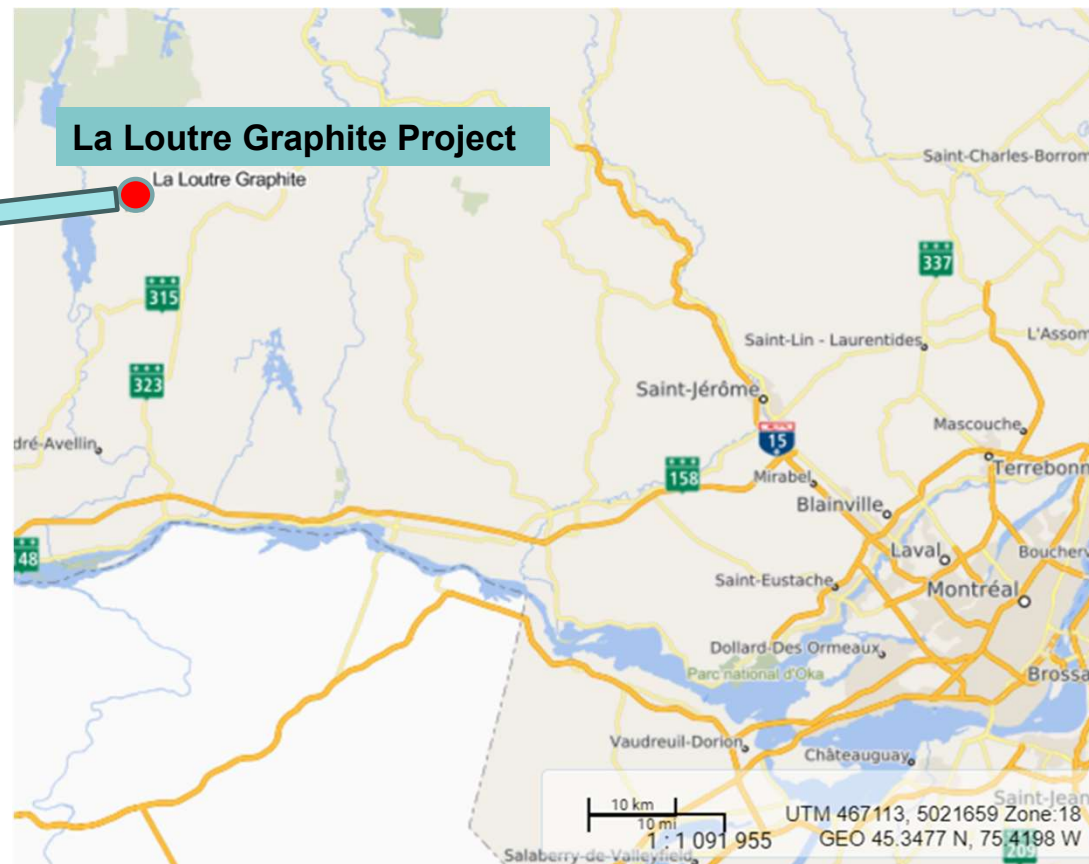
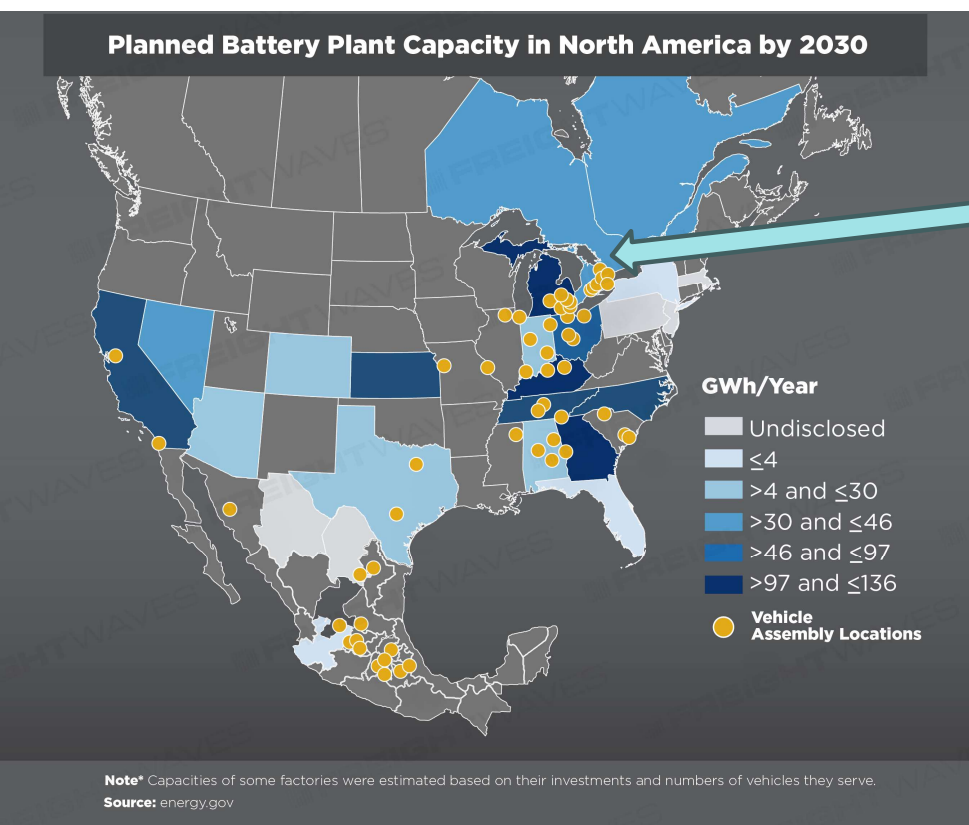
❖ Committed to Truth and Reconciliation Call to Action #92



# La Loutre Graphite Project



# Lomiko is poised to be the responsible developer of choice in the South of Quebec



Source: NI 43-101 Technical Report and Preliminary Economic Assessment (July 2021)

# Achieving 184% Increase in Tonnage Indicated Mineral Resources

La Loutre Resource Estimate (Effective Date: March 31, 2023)

Source: InnovExplo March 2023

		2023 MRE			2021 MRE		
Deposit		EV	Battery	TOTAL	EV	Battery	TOTAL
Cut-off (%) Cg		1.5	1.5	1.5	1.5	1.5	1.5
Indicated mineral resource	Tonnage (kt)	24,267	40,429	64,696	8,158	15,007	23,165
	Graphite (%)	5.80	3.86	4.59	6.48	3.44	4.51
	Graphite (kt)	1,407	1,562	2,969	529	516	1,045
Inferred mineral resource	Tonnage (kt)	3,067	14,384	17,452	12,829	33,992	46,821
	Graphite (%)	4.29	3.60	3.72	5.81	3.33	4.01
	Graphite (kt)	132	518	650	745	1,132	1,878

Notes to accompany the Mineral Resource Estimate:

1. The independent and qualified persons for the mineral resource estimate, as defined by NI 43 101, are Marina Iund, P.Geo. (InnovExplo Inc.), Martin Perron, P.Eng. (InnovExplo Inc.), Simon Boudreau, P.Eng. (InnovExplo Inc.) and Pierre Roy, P.Eng. (Soutex Inc.). The effective date of the estimate is March 31st, 2023.
2. These mineral resources are not mineral reserves as they do not have demonstrated economic viability. The mineral resource estimate follows current CIM Definitions (2014) and CIM MRMR Best Practice Guidelines (2019).
3. The results are presented undiluted and are considered to have reasonable prospects of economic viability.
4. The estimate encompasses two mineralized domains (EV and Battery) using the grade of the adjacent material when assayed or a value of zero when not assayed.
5. No capping was applied on 1.5m composites.
6. The estimate was completed using sub-block model in Leapfrog Edge 2022 with user block size of 5m x 5m x 5m and minimum block size of 2.5m x 2.5m x 2.5m. Grades interpolation was obtained by ID2 using hard boundaries.
7. Bulk density values were applied by lithology (g/cm3): low grade zone = 2.82; high grade zone = 2.82; paragneiss = 2.8; quartzite = 2.73; pegmatite = 2.63, marble = 2.75 and OB = 2.0.
8. The mineral resource estimate is classified as indicated and inferred. The Indicated mineral resource category is defined with a minimum of three (3) drill holes in areas where the drill spacing is less than 55 m, and reasonable geological and grade continuity have been demonstrated. The Inferred category is defined with a minimum of two (2) drill holes in areas where the drill spacing is less than 100m, and reasonable geological and grade continuity have been demonstrated. Clipping boundaries were used for classification based on those criteria.
9. The mineral resource estimate is pit-constrained with a bedrock slope angle of 45° and an overburden slope angle of 30°. It is reported at a graphite cut-off grade of 1.5%. The cut-off grade was calculated using the following parameters: processing cost = C\$13.04; product transporting cost = C\$41.16; mining cost (rock) = C\$3.70; mining cost (OB) = C\$2.90; graphite price = US\$1,098.07 /tonne of graphite; USD:CAD exchange rate = 1.32; graphite recovery to concentrate product = 94.7%. The cut-off grade should be re-evaluated in light of future prevailing market conditions (metal prices, exchange rates, mining costs etc.).
10. The number of metric tons was rounded to the nearest thousand, following the recommendations in NI 43 101 and any discrepancies in the totals are due to rounding effects.
11. The authors of MRE are not aware of any known environmental, permitting, legal, title-related, taxation, socio-political, or marketing issues, or any other relevant issue not reported in the Technical Report, that could materially affect the Mineral Resource Estimate.

# La Loutre initial metallurgical program confirms high purity concentrate

- **ProGraphite** and **Corem** confirm graphite from La Loutre is suitable for a wide range of traditional markets such as refractories, crucibles and friction products, or expanded graphite markets
- **Corem** - 2021 flotation concentrate initial chemical purification trials show that the chemical purification method can upgrade the graphite concentrate from 98.4% C(t) to >99.9% C(t)
- **Key physical and chemical properties:**
  - Well-balanced size distribution (50% >100 mesh, 50% -100 mesh)
  - Degree of graphitization over 98%
  - Achieves low levels of volatiles across all size fractions (0.13 - 0.38%) and low springback in all size fractions (1.6 – 3.1%),
  - The oxidation resistance of the larger flakes was excellent (<10% for +80 mesh).



Expanded Graphite +50 mesh



# Expandable Graphite

## Testing results for La Loutre Graphite:

- The expansion rates for both fractions are very good. Usually expansion rates expected for “good” expandable graphite are at a minimum of 250 ml/g for +80 mesh and a minimum of 350 ml/g for +50 mesh.
- The results in the table show that the expansion rates for the Lomiko graphite are significantly above these values.
- The values for the starting temperatures are normal for the combination of chemicals used for preparing the graphite salt.
- Given the significant portion, especially of the +80 mesh flakes, expandable graphite production seems to be a promising application for the graphite from the La Loutre deposit.

Grade	unit	Lomiko +50	Lomiko +80
Size (micro meter)	µm	+300	+180
Size (mesh)	mesh	+50	+80
<b>Expandable graphite</b>			
expansion rate	ml/g	390	350
starting temperature	°C	230	230

Expanded Graphite +80 & +50 mesh

# La Loutre Graphite Met Studies - Summary

## ✓ **SGS & Metpro Characterization Study, Feb 2023**

640kg core sample that was homogenized and used to test the graphite mineralization. Optimization of the flotation circuit resulted in achieving 94.7% recovery and reconciled LCT (Locked Cycle Testing) testing grades at 99.1%Cg

## ✓ **ProGraphite SPG Study, May 2023**

A 10.5 kg bulk flotation sample was micronized, spheroidized, and purified to produce spheroidized and purified graphite (SPG). All physical characterization tests meet the target values for Electric Vehicles and other lithium-ion based battery applications

# La Loutre Graphite Met Studies - Summary

## ✓ **Polaris Study Phase 1 & Phase 2, January & April 2024**

Polaris tested electrochemical characteristics of cSPG (coated spherical graphite) by subjecting a half-cell coin and a single-layer pouch full-cell batteries demonstrating that La Loutre cSPG quality is meeting or surpassing industry standards.

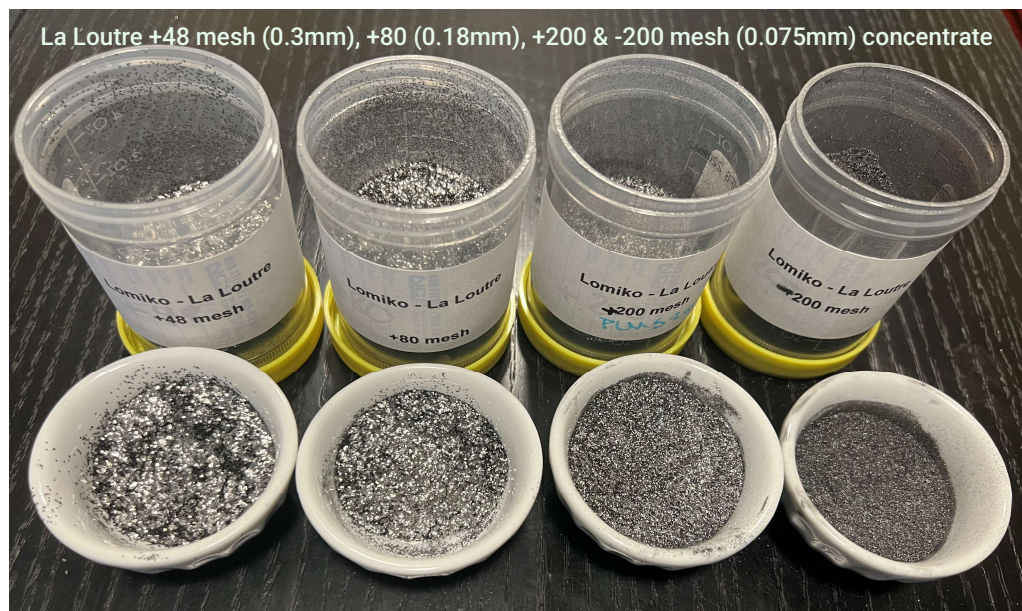
Both SPG16 and SPG20 perform well as compared to commercial graphite reference material for charge and discharge capacities, first cycle loss coulombic efficiency, and gravimetric capacity. With these electrochemical performance results produced by Polaris

**Lomiko has now successfully demonstrated the full value chain  
from ore to battery anode material on samples from the La Loutre project**

# SGS Characterization Study, 2023

## 67% fines content in the flotation concentrate

- La Loutre flake distribution is ~67% fines - suitable for anode market **37% growth year over year!**
- -100 mesh is used most commonly in SPG (spherical graphite) as a precursor for battery production



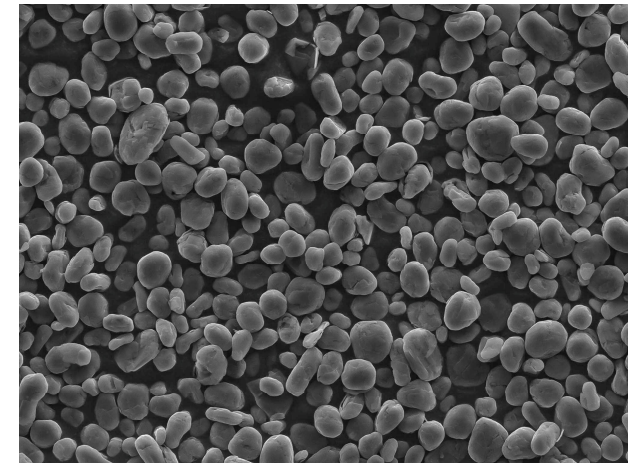
Size Fraction Analysis of Combined Concentrate of LCT – PFS Level MetPro Report Feb 2023

33% of +100 mesh	Size (Mesh)	Size (µm)	Mass (%)	C(t) (%)	C(t) Distribution (%)
	32	500	0.4	98.3	0.4
	48	300	5.6	98.7	5.5
	80	180	18.1	98.3	17.9
	100	150	9.5	98.8	9.4
	150	106	17.0	99.4	17.1
	200	75	18.6	99.6	18.7
	325	45	18.2	99.5	18.2
	-325	-45	12.7	99.1	12.7
	Final Concentrate		100	99.1	100

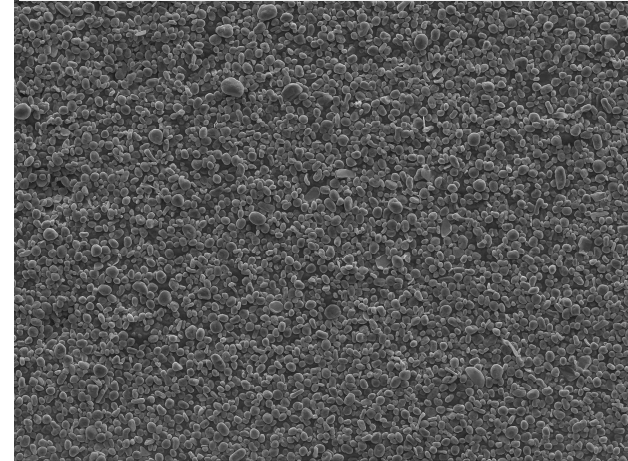
# La Loutre metallurgical program

## 99.99% purified graphite content

- ✓ Completed PFS level met testing and optimized flow sheet
- ✓ Completed value-added testing with ProGraphite – micronization, spheroidization, and purification:
- ✓ **Proved that La Loutre material is suitable for battery applications - Spherical Graphite production yielded excellent results**
- ✓ **Achieving excellent 99.99%Cg SPG and flake purity**
- ✓ All physical characterization tests produced excellent results
- ✓ Achieved continuous and reliable production of micronized products with homogenous properties.
- ✓ Low specific energy input to convert the La Loutre flotation concentrate to micronized material.



SEM HV: 20.00 kV WD: 17.92 mm  
View field: 288.9 μm Det: SE  
Name: V409LO\_00009 Date(m/d/y): 05/10/23  
VEGA\\ TESCAN  
GeoZentrum Nordbayern

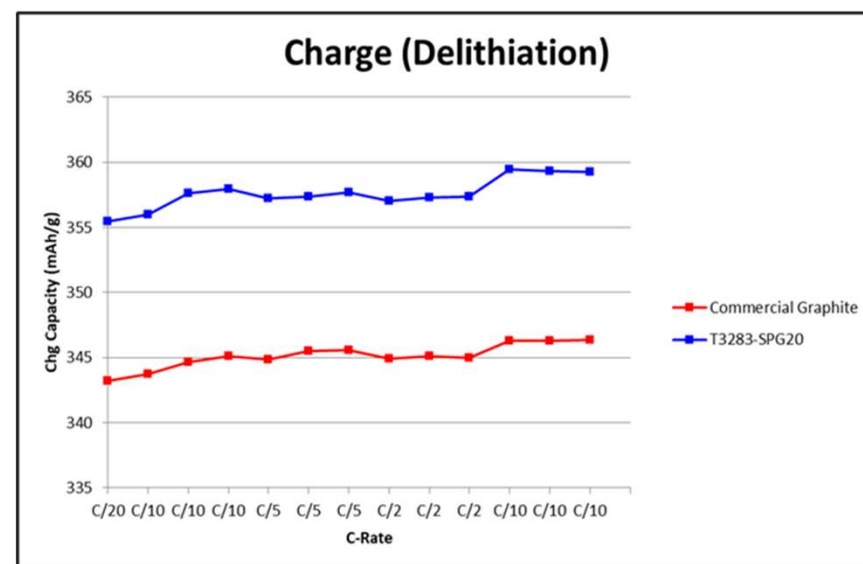


SEM HV: 20.00 kV WD: 17.92 mm  
View field: 1.16 mm Det: SE  
Name: V409LO\_00012 Date(m/d/y): 05/10/23  
VEGA\\ TESCAN  
GeoZentrum Nordbayern



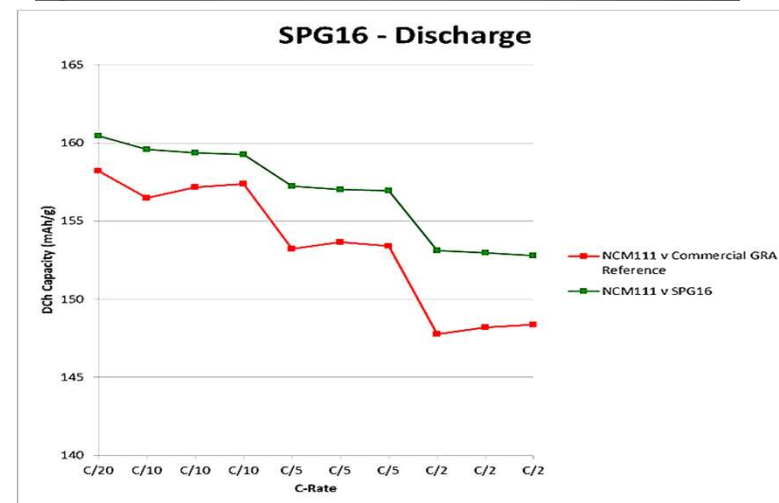
# La Loutre half-cell battery testing surpassed commercial graphite results - Polaris

- ✓ Demonstrated that La Loutre material is suitable for battery applications – half-coin battery testing with Polaris Battery Labs, LLC, USA, is demonstrating higher reversible capacity compared to commercially available graphite, averaging 358mA/h
- ✓ Figure up - Lomiko graphite Half-cell batteries produced and tested by Polaris (SPG16 top, SPG20 bottom row)
- ✓ Figure bottom - SPG20 sample from La Loutre has superior charging capacity compared to commercial graphite in the market today in North America.



# La Loutre single layer pouch full-cell battery testing met and surpassed commercial graphite results - Polaris

- ✓ Demonstrated that La Loutre material is suitable for battery applications – single layer pouch full cell battery testing completed with Polaris Battery Labs, LLC, USA,
- ✓ The single-layer pouch cells constructed with La Loutre graphite anode and standard cathode material: cSPG16 and cSPG20 samples from La Loutre reveal strong performance of the La Loutre cSPG with better discharging capacity compared to commercial graphite material in North America today.
- ✓ Both samples were put through a brief life cycle analysis for 25 cycles at C/2 and performed well.
  - ❖ Figure top - Lomiko graphite Single layer pouch batteries produced and tested by Polaris
  - ❖ Figure bottom - SPG20 sample from La Loutre has better charging/discharging capacity compared to commercial graphite in the market today in North America.



# La Loutre thermal purification and half-cell battery testing surpassed commercial graphite results - NRC

- ✓ NRC Study Phase 1- half-cell coin battery testing demonstrated that La Loutre material is suitable for battery applications – half-coin battery testing with, is demonstrating higher reversible capacity compared to commercially available graphite, surpassing results achieved at Polaris at 358mA/h at an averages 367 mAh/g in the NRC Study
- ✓ High Temperature (HT) purification in a HT furnace. The sample was heated up to 2700 C in argon gas for 5-10 minutes, followed by a natural cooling of the furnace for several hours, kept under Argon gas. The HT purification by NRC was able to bring almost all elements below the 10 ppm target.
- ✓ Phase 2 of the NRC Study would build 5-layer batteries and test them for 500 cycles over 9 months.

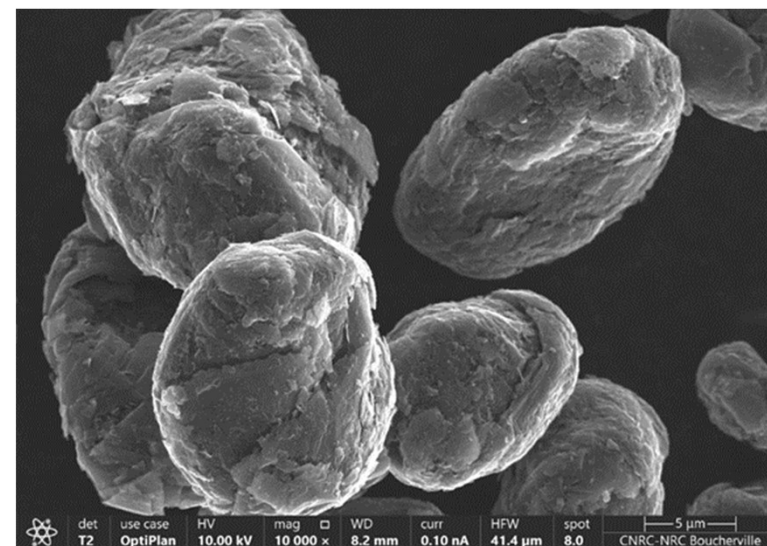


Figure - Lomiko graphite Half-cell batteries produced and tested by Polaris

# La Loutre Graphite Project Next Steps

# Summary of DoD Technology Investment Agreement

- ✓ Award: US\$8.35m
- The TIA agreement entered into with the DoD is to complete three distinct phases of research and development work with independent experts and consultants over a 5-year period to develop, test and prove a production process from natural flake graphite into cSPG anode-grade material
- Lomiko has de-risked 50% of study costs to US\$8.35m grant
- This funding supports the full vision and values of Lomiko for a decarbonized mine model, community-focused studies, and ongoing metallurgical test work

Phase 1: Completion of a Pre-Feasibility Study (PFS) and all environmental studies

Phase 2: Completion of metallurgical studies and bulk sample, including cSPG

Phase 3: Completion of a Definitive Feasibility Study (DFS)



# Summary of CMRDD program administered by Natural Resources Canada

- ✓ Award: CA\$4.9m
- The CMRDD program administered by Natural Resources Canada is to pilot the integrated graphite upgrading process with a 200 mt bulk sample over 3 years for a total contribution agreement of CA\$6.6m where Lomiko will contribute 25% of this funding
- It supports four tasks: these tasks complement Phase 2 of the DoD grant
- All work and equipment will be in a Canadian lab setting

Task 1: Crushing, grinding and flotation of La Loutre graphite

Task 2: Chemical and thermal purification of graphite concentrate

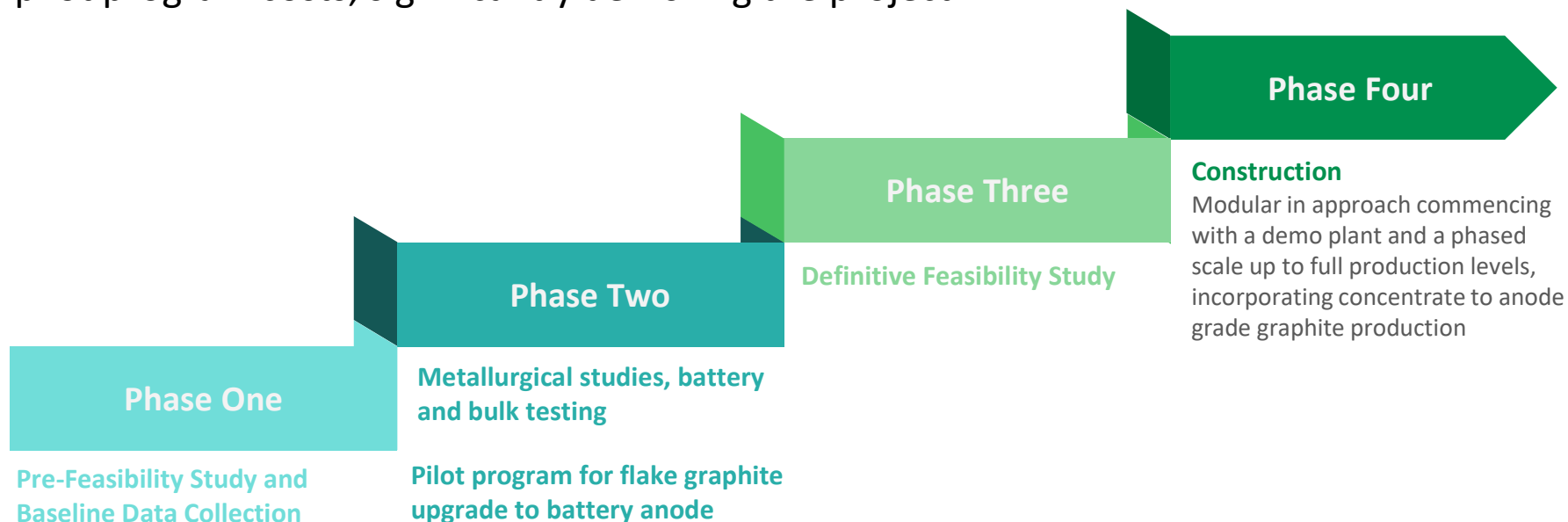
Task 3: Micronization and spheroidization of the flotation concentrate

Task 4: Carbon coating of purified graphite

# La Loutre Development

A de-risked path to continued development of this strategic critical mineral asset

- The U.S. DoD has provided a grant for 50% of the study costs and NRCAN is contributing 75% of the pilot program costs, significantly de-risking the project.



For more information

[info@lomiko.com](mailto:info@lomiko.com)

Follow us @lomikometals on socials

