

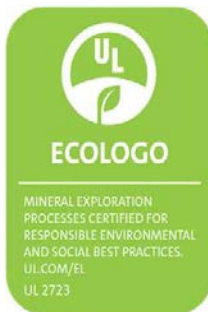


LOMIKO
METALS®

Critical minerals developer
in Canada
for a shared
climate success story

TSXV: LMR
OTC: LMRMD
Frankfurt: DH8C

February 2025



DISCLAIMER

This presentation is not a prospectus, offering memorandum or an advertisement and is being provided for information purposes only and does not constitute or form part of, and should not be construed as, an offer or invitation to sell or any solicitation of any offer to purchase or subscribe for any securities of Lomiko Metals Inc. (the “Corporation”) in Canada, the United States or any other jurisdiction. Neither this presentation, nor any part of it, nor anything contained or referred to in it, nor the fact of its distribution, should form the basis of or be relied on in connection with or act as an inducement in relation to a decision to purchase or subscribe for or enter into any contract or make any other commitment whatsoever in relation to any securities of the Corporation.

This presentation contains "forward-looking information" within the meaning of the applicable Canadian securities legislation that is based on expectations, estimates, projections and interpretations as at the date of this presentation. The information in this presentation about the Corporation; and any other information herein that is not a historical fact may be "forward-looking information" (“FLI”). All statements, other than statements of historical fact, are FLI and can be identified by the use of statements that include words such as "anticipates", "plans", "continues", "estimates", "expects", "may", "will", "projects", "predicts", "proposes", "potential", "target", "implement", "scheduled", "intends", "could", "might", "should", "believe" and similar words or expressions. FLI in this presentation includes, but is not limited to: the Corporation’s objective to become a responsible supplier of critical minerals, exploration of the Corporation’s projects, including expected costs of exploration and timing to achieve certain milestones, including timing for completion of exploration programs; the Corporation’s ability to successfully fund, or remain fully funded for the implementation of its business strategy and for exploration of any of its projects (including from the capital markets); any anticipated impacts of COVID-19 on the Corporation’s business objectives or projects, the Corporation’s financial position or operations, and the expected timing of announcements in this regard. FLI involves known and unknown risks, assumptions and other factors that may cause actual results or performance to differ materially. This FLI reflects the Corporation’s current views about future events, and while considered reasonable by the Corporation at this time, are inherently subject to significant uncertainties and contingencies. Accordingly, there can be no certainty that they will accurately reflect actual results. Assumptions upon which such FLI is based include, without limitation: current market for critical minerals; current technological trends; the business relationship between the Corporation and its business partners; ability to implement its business strategy and to fund, explore, advance and develop each of its projects, including results therefrom and timing thereof; the ability to operate in a safe and effective manner; uncertainties related to receiving and maintaining exploration, environmental and other permits or approvals in Quebec; any unforeseen impacts of COVID-19; impact of increasing competition in the mineral exploration business, including the Corporation’s competitive position in the industry; general economic conditions, including in relation to currency controls and interest rate fluctuations.

The Corporation’s actual results, programs and financial position could differ materially from those anticipated in such FLI as a result of numerous factors, risks and uncertainties, many of which are beyond the Corporation’s control. These include, but are not limited to: the market for critical minerals; the evolution of supply and demand for critical minerals; the Corporation’s projects may not be explored or developed as planned; uncertainty relating to possible cost-overruns in implementing its business strategy and developing its projects; market prices affecting development of the projects; the availability and ability to secure adequate financing and on favourable terms; inability to obtain required governmental permits; any limitations on operations imposed by governments in the jurisdictions where we operate; technology risk; inability to achieve and manage expected growth; political risk associated with foreign operations; changes in government regulations, including currency controls; changes in environmental requirements; failure to obtain or maintain necessary licenses, permits or approvals; risks associated with COVID-19; insurance risk; litigation risk; receipt and security of mineral property titles and mineral tenure risk; changes in project parameters; uncertainties associated with estimating mineral resources and mineral reserves in the future, including uncertainties regarding assumptions underlying such estimates; whether mineral resources (if any) will ever be converted into mineral reserves; opposition to exploration and/or development of the projects; surface access risk; geological, technical, drilling or processing problems; health and safety risks; unanticipated results; unpredictable weather; unanticipated delays; reduction in demand for minerals; intellectual property risks; dependency on key personnel; workforce and equipment availability; currency and interest rate fluctuations; and volatility in general market and industry conditions.

This Presentation has not been independently verified and the information contained within may be subject to updating, revision, verification and further amendment. Except as otherwise provided for herein, neither the Corporation, nor its directors, officers, shareholders, agents, employees or advisors give, has given or has authority to give, any representations or warranties (express or implied) as to, or in relation to, the accuracy, currency, reliability or completeness of the information or opinions in this Presentation, or any revision thereof, or of any other written or oral information made or to be made available to any interested party or its advisers and liability therefore is expressly disclaimed for any loss howsoever arising, directly or indirectly, from any use of such information or opinions or otherwise arising in connection therewith.

Except as may be required by applicable law, in furnishing this presentation, the Corporation does not undertake or agree to any obligation to provide the recipient with access to any additional information or to update this presentation or to correct any inaccuracies or omissions. Information contained in this presentation is the property of the Corporation and it is made available strictly for the purposes referred to above.

Land Acknowledgement

The land/projects where we operate are located within the traditional land of the Algonquin Anishnaabeg and Cree Eeyou Istchee Peoples.

Our vision is to embrace Indigenous people and Indigenous values within our projects to develop a sustainable approach on our path to critical minerals development while honouring the lives, memories, and hopes of all seven generations close.

The La Loutre graphite project site is located within the Kitigan Zibi Anishinabeg (KZA) First Nation's territory. The KZA First Nation is part of the Algonquin Nation and the KZA traditional territory is situated within the Outaouais and Laurentides regions.

The Bourier lithium project site is located southeast of the Eeyou Istchee James Bay territory in Quebec, near Nemaska Lithium and Critical Elements.



Lomiko 2025 advantage

Exposure to two strategic minerals in demand in North America – graphite and antimony

- ✓ New investment in antimony, silver, and gold exploration project in Newfoundland – excellent upside in critical mineral that is banned for export from China
- ✓ La Loutre is the seventh biggest graphite deposit close to the US and battery highway; making it the largest undeveloped natural flake graphite project in Canada

Endorsement from Federal, Provincial and Federal grant agencies

- ✓ **\$16M** in the awards and investment agreement – **non-repayable securing 50%** of all study funds
- ✓ Project is vetted by the US Department of Defense and the Federal Government

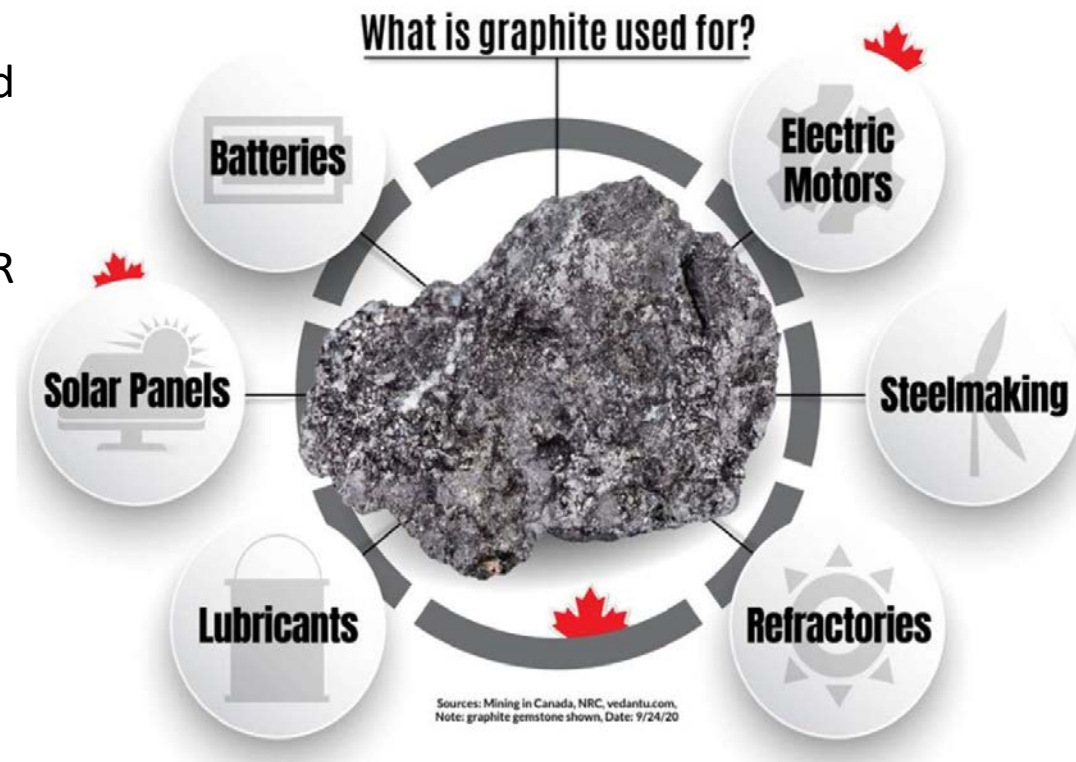
Energy transition and energy security investment opportunity

- ✓ Chinese export restrictions on graphite and antimony demonstrate tremendous upside potential
- ✓ Battery testing showcases excellent results, meeting and exceeding industry standards.

Graphite Market

Graphite is essential for the energy transition

- Primary Battery – Alkaline, primary alkaline lithium, primary lithium Thionyl Chloride
- Secondary Battery – EV, Consumer Good Industrial, Aerospace, Solar Panels
- Fuel cells
- Nuclear Industry (Grade Graphite; PBMR Shielding)
- Aerospace (Coatings & Dispersion)
- Graphene – oxides, powders, etc.
- Refractories and Steelmaking
- Ceramics
- Advanced Lubricants
- Thermal Plastics (PEEK / PTFE) and plastics
- Construction Industry (reinforced concrete)



The China dynamic underlines the importance of Lomiko

China is the world's top graphite producer and exporter and refines more than 90% of the world's graphite into the anode material.

- Trade war on critical minerals is escalating – China banned shipments of gallium, germanium, **antimony**, and so-called superhard materials to USA - Critical mineral security is linked to the escalating tech trade war.
- Export permits from China now required for certain graphite products to safeguard national security since December 2023 – tightened measures in December 2024

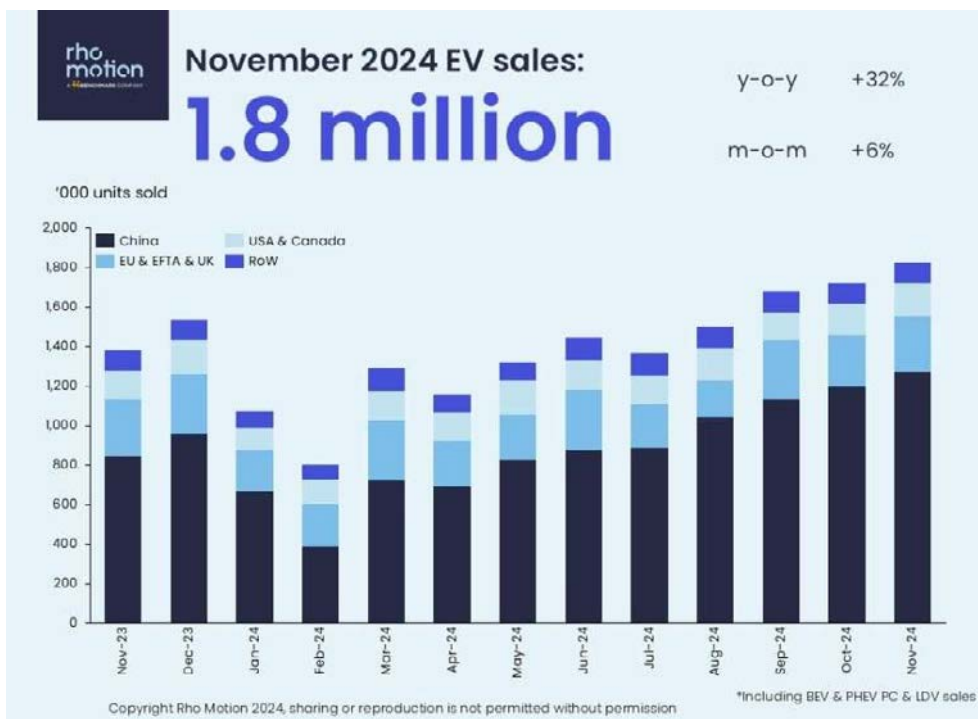
The USA response:

1. The tariff rate on lithium-ion EV batteries increase from 7.5% to 25% in 2024
2. The tariff rate on lithium-ion non-EV batteries will increase from 7.5% to 25% in 2026
3. The tariff rate on battery parts increase from 7.5% to 25% in 2024
4. **The tariff rate on natural graphite and permanent magnets will increase from zero to 25% in 2026**

Canada imposed a 100% surtax on Chinese-made electric vehicles (EVs) on October 1, 2024

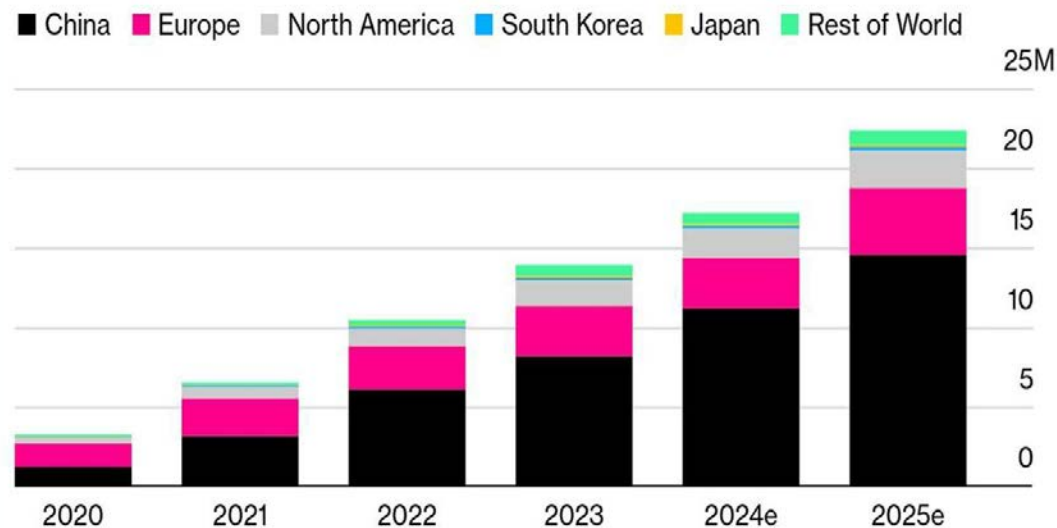
Lomiko: an ideal partner for investment into electrification growth market at 21% growth rate

Outstanding investment opportunity to participate in energy transition and natural flake graphite with government partners with grants from Quebec, the USA Department of Defence and the Canadian Federal government.



EV Sales Are Expected to Exceed 22 Million

BNEF's outlook for battery-electric and plug-in hybrid cars



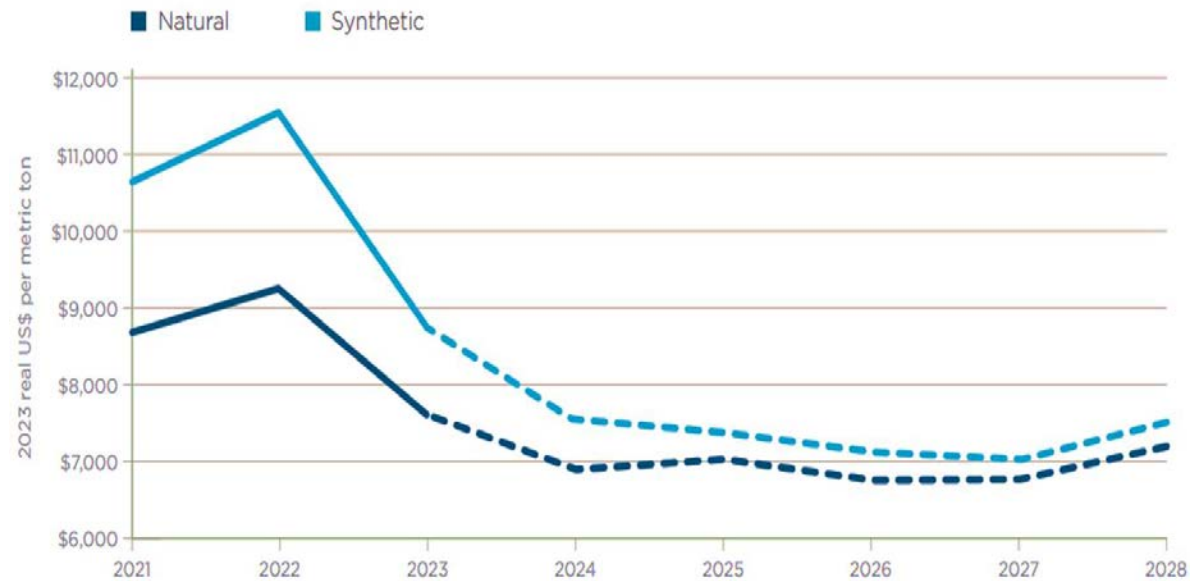
Source: BloombergNEF

Bloomberg

Lomiko and the graphite market

The graphite customer base is wide with many industrial applications, with the EV sector anticipated to grow in the next 5-15 years, driving the need for natural-flake graphite and anode material for use in batteries.

- Electric Vehicles (EVs)** Lomiko is advancing the qualification process with OEMs and downstream buyers. Polaris and NRC's basic electrochemistry analysis shows potential for La Loutre Flake Graphite to become a feedstock for the anode market.
- Internal Combustion Engines**—Primary batteries require high-purity micronized flake graphite and qualifications in 18 months.
- Consumer Goods** - conductive additives for cathode and anode applications in medical devices, aerospace, defence, and industrial at 99.9%Cg for C & D and AA & AAA Battery Formats - 45 & 15 microns
- Energy Storage** – the fastest-growing sector for grid stabilization, transportation, communications, and aerospace.



Source: Benchmark Mineral Intelligence, Oxford Economics

Actual price in China for Anode Material 2021-2028

Grants and Awards – Non-dilutive capital

Over CA\$16m concurrent Canadian and USA funding announced May 16

- ✓ These are **non-dilutive non-repayable awards!**
- ✓ Recipient of a **US\$8.35m (CA\$11.2m)** R&D (Research & Development) technology investment agreement from the United States of America Department of Defense (“DoD”) and **CAN \$4.9m** contribution from Natural Resources Canada

Awards support a de-risked path of development with funding for more than 50% of project costs

- ✓ Announcements are part of the joint Canada-U.S. Energy Transformation Task Force
- ✓ **The DoD grant**, called a Technology Investment Agreement (“TIA”) supports studies for La Loutre to complete pre-feasibility (PFS), baseline and metallurgical studies and definitive feasibility study (DFS)
- ✓ The Canadian Critical Mineral Research, Development and Demonstration (CMRDD2) program administered by Natural Resources Canada is to pilot the integrated graphite upgrading process from the rock to cSPG anode grade product

Summary of CMRDD program administered by Natural Resources Canada

- ✓ Award: **CAN\$4.9m**
- The CMRDD program administered by Natural Resources Canada is to pilot the integrated graphite upgrading process with a 200 mt bulk sample over 3 years for a total contribution agreement of CA\$6.6m where Lomiko will contribute 25% of this funding
- It supports four tasks: these tasks complement Phase 2 of the DoD grant
- All work and equipment will be in a Canadian lab setting

Task 1: Crushing, grinding and flotation of La Loutre graphite

Task 2: Chemical and thermal purification of graphite concentrate

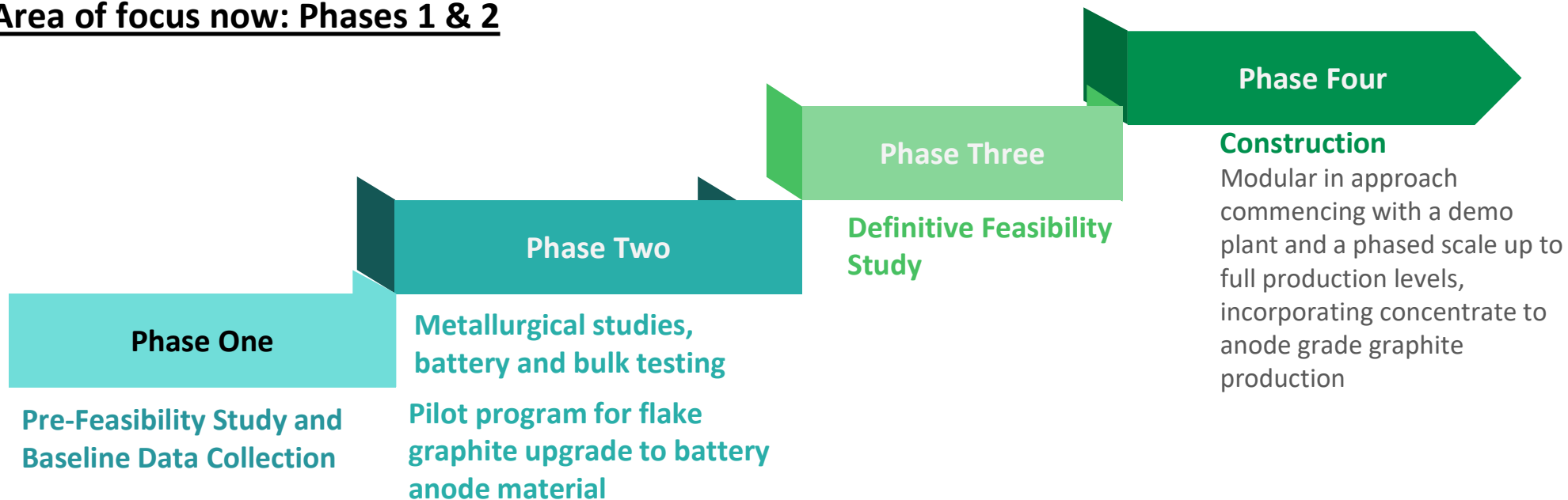
Task 3: Micronization and spheroidization of the flotation concentrate

Task 4: Carbon coating of purified graphite

La Loutre development

A de-risked path to continued development of this strategic critical mineral asset

- The U.S. DoD has provided a TIA for 50% of the study costs, and NRCAN is contributing **75%** of the pilot program costs, significantly de-risking the project.
- **Area of focus now: Phases 1 & 2**



La Loutre and Graphite Portfolio

MINÉRAUX CRITIQUES ET STRATÉGIQUES AU QUÉBEC

Version du 13 février 2020

UN POTENTIEL À EXPLOITER

Graphite

- Plusieurs projets de graphite sont en attente au Québec.
- 1 Lac-des-Îles**
Imerys Graphite et Carbon Canada
Mine active
 - 2 Lac Guéret**
Mason Graphite
Mise en valeur
 - 3 Matawinie**
Nouveau Monde Graphite
Mise en valeur
 - A Lac Knife**
Focus Graphite inc.
Gîte
 - B La Loutre**
Corporation Métaux Précieux du Québec
Gîte
 - C Miller**
Canada Carbon
Gîte
 - D Bell Graphite**
Saint Jean Carbon
Gîte
 - E Mousseau West**
Gîte

Cobalt et éléments du groupe du platine

- Deux mines exploitent le cobalt et les éléments du groupe du platine en sous-produits du nickel.
- 4 Raglan**
Glencore Canada Corporation
Mine active
 - 5 Nunavik Nickel**
Canadian Royalties inc.
Mine active
 - 6 Dumont Nickel**
Magneto Investments Limited Partnership
Mise en valeur
 - F Bravo**
Exploration minière Ilen Nunavik Itée
Gîte
 - G Hawk Ridge**
Nickel North Exploration Corp.
Gîte
 - H Lac Menarik**
Harfang Exploration inc.
Gîte
 - I Lac Rocher**
Victory Nickel inc.
Gîte
 - J Nisk-1**
Corporation Éléments Critiques
Gîte

Niobium

- Le Québec est le deuxième producteur mondial de niobium et le seul de l'hémisphère nord.
- 7 Niobec**
Niobec
Mine active
 - K Crevier**
Les Minéraux Crevier inc.
Gîte

Titane et vanadium

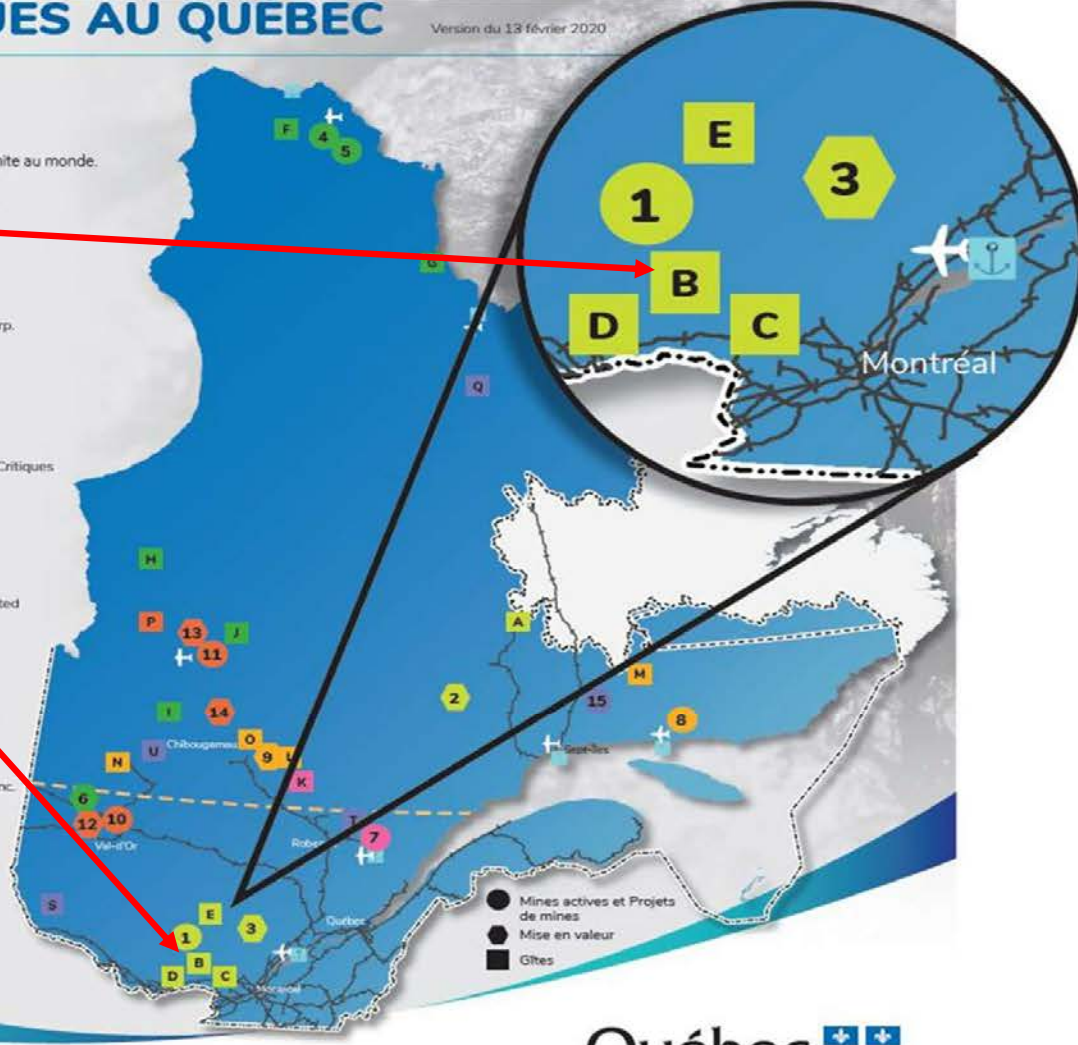
- Le Québec est le premier producteur de titane sous forme d'ilménite au monde.
- 8 Lac Tio**
Rio Tinto Fer et Titane
Mine active
 - 9 BlackRock**
Métaux BlackRock inc.
Mise en valeur
 - L Vanadium-Lac Doré**
Vanadiumcorp Resource inc.
Gîte
 - M Maggie**
The Maggie Mines Inc.
Gîte
 - N Iron-T**
Vanadium Corp.
Gîte
 - O Mont Sorcier Iron**
Vanadium One Iron Corp.
Gîte

Lithium

- Le Québec détient un potentiel élevé en lithium.
- 10 Lithium Amérique du Nord**
Lithium Amérique du Nord
Mine en maintenance
 - 11 Whabouchi**
Nemaska Lithium
Construction et rodage
 - 12 Authier**
Sayona Québec
Mise en valeur
 - 13 Rose**
Corporation Éléments Critiques
Mise en valeur
 - 14 Moblan**
Lithium Guo Ao Ltée et SOQUEM inc.
Mise en valeur
 - P James Bay**
Galaxy Resources Limited
Gîte

Éléments des terres rares

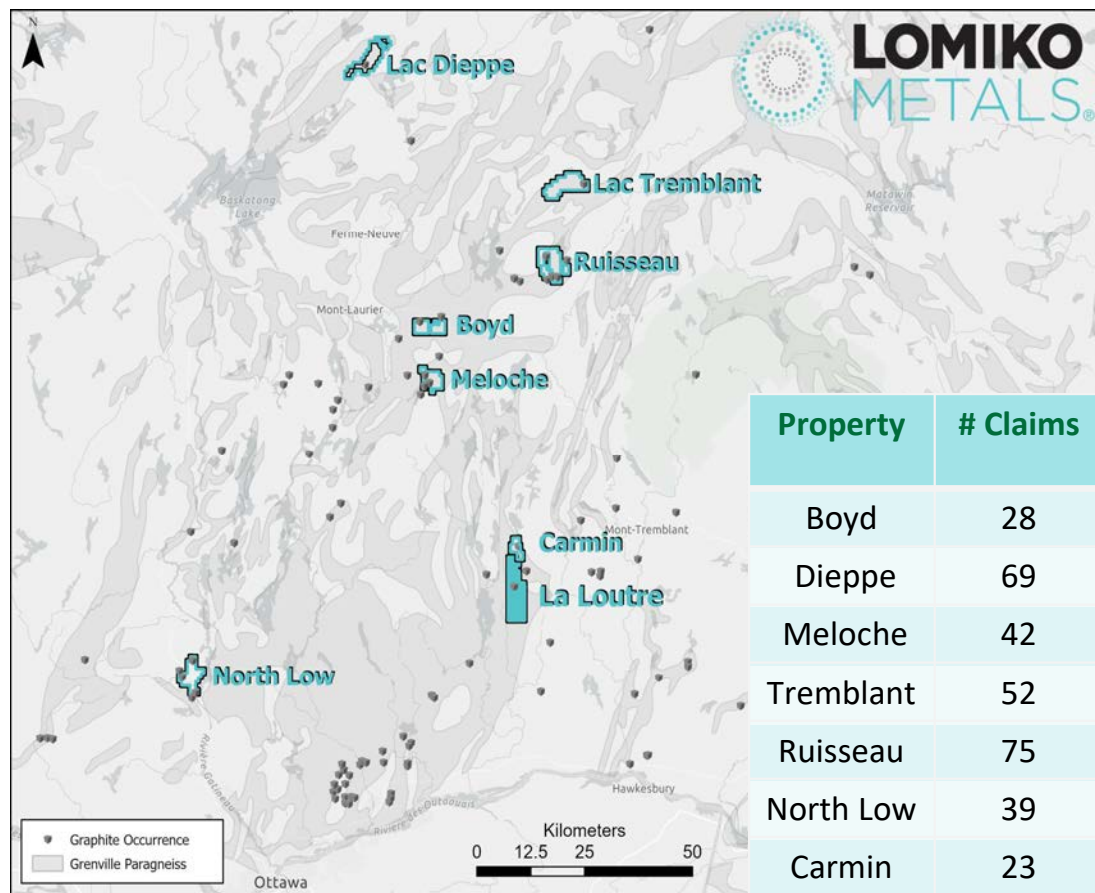
- Le Québec renferme plusieurs dépôts de terres rares et il est reconnu comme ayant un potentiel à l'échelle mondiale.
- 15 Kwyjibo**
SOQUEM
Mise en valeur
 - Q Eldor (Ashram)**
Commerce Resources Corporation
Gîte
 - R Strange Lake - Zone B**
Métaux Torngat Itée
Gîte
 - S Kipawa (Zeus)**
Corporation Métaux Précieux du Québec et Ressources Québec inc.
Gîte
 - T Niobec - REE Zone**
Niobec inc.
Gîte
 - U Carbonatite de Montviel**
Ressources Géoméga inc.
Gîte



Regional exploration in Grenville belt

Most prospective graphite belt in North America

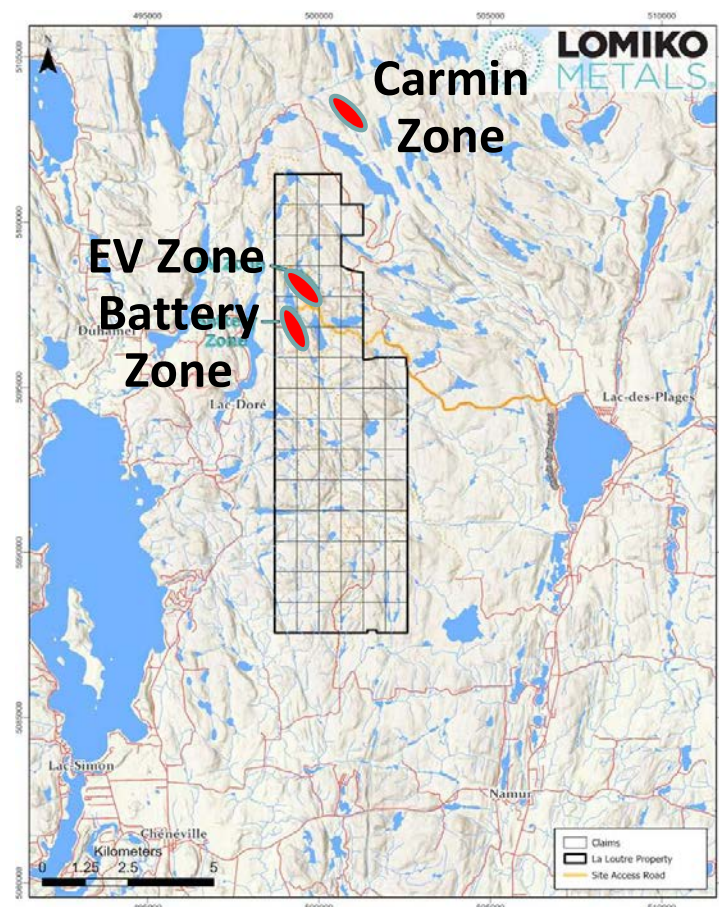
- 328 claims in total on 7 early-stage projects covering 18,622 hectares in southern Quebec.
- 2024 Field Program results for Meloche, Dieppe, Tremblant and Ruisseau
- Ruisseau – grades up to 27.9 percent carbon graphite (“% Cg”) from four distinct high grade mineralized zones that are over 3km long;
- Meloche – grades up to 13.3% Cg from two distinct mineralized clusters;
- Tremblant – grades up to 11.6% Cg from numerous, widespread spot anomalies; and
- Dieppe – grades up to 6.82% Cg from numerous, widespread spot anomalies and a distinct mineralized cluster.
- Boyd – 8 samples grades ranf=ge from 5.61%Cg to 17.10 %Cg with all samples above 5.00% Cg



La Loutre PEA details dated September 2021

- Two known deposits currently being explored: EV Zone and Battery Zone
- LOM plant production of 21.8 Mtonnes of mill feed at 6.78% Cg diluted
- **Graphite concentrate production at 1.43 Mtonnes grading 95.0% Cg**
- 14.7-year mine life producing 100,000tpy of graphite
- **Exceeded PEA test with PFS level testing** - Open circuit variability flotation tests produced concentrate grades between **97.9% and 99.7% Cg with 94.7% recoveries!**
- Focused footprint relative to claim size

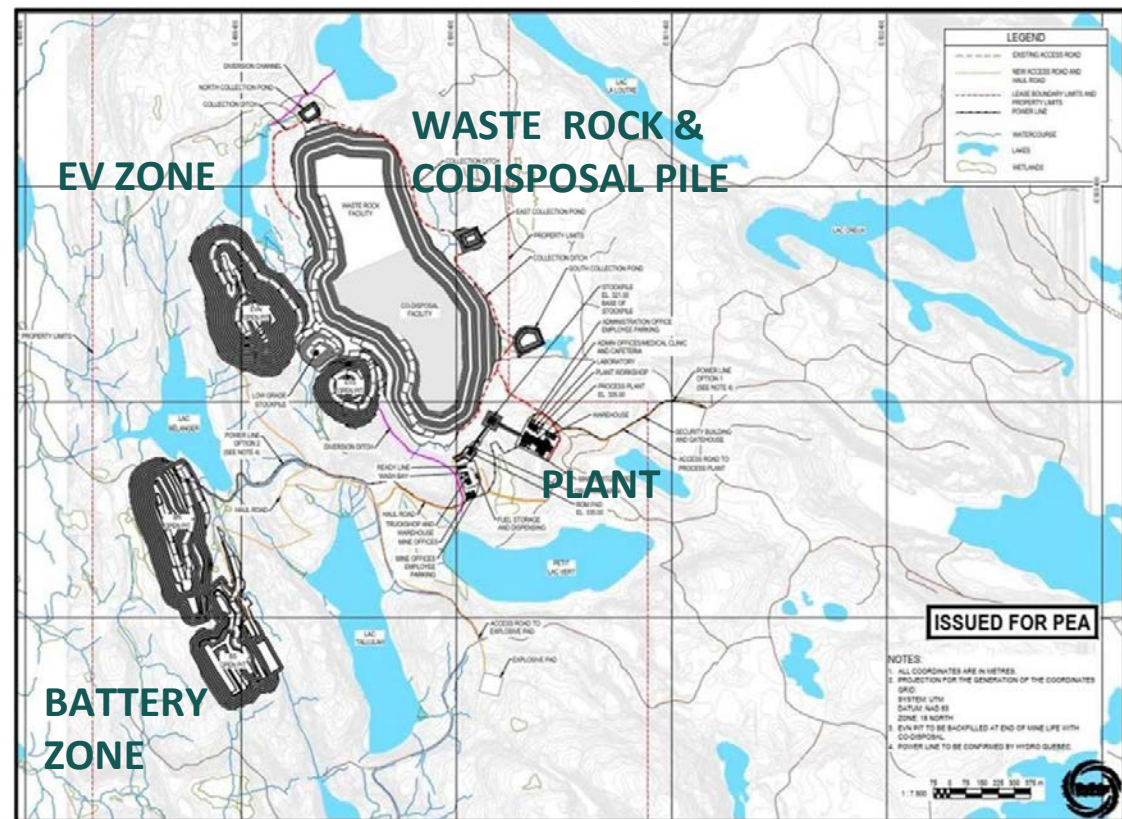
Carmin Acquisition – historic PFS



La Loutre: PEA Layout – great base to build on

Mine layout and costs – PEA

- Waste rock and tailings co-disposed
- Efficient site water management with no wet tailings
- Pits sequenced to maximize the returns starting from North – EV Pits to South – Battery Pits
- Stockpiles (low grade and ROM) for blending and Flotation Plant
- Mine - truck & shovel operation
- Flotation Plant 4,000tpd
- Capex of C \$236M, AISC US \$ 406/t Cg cost



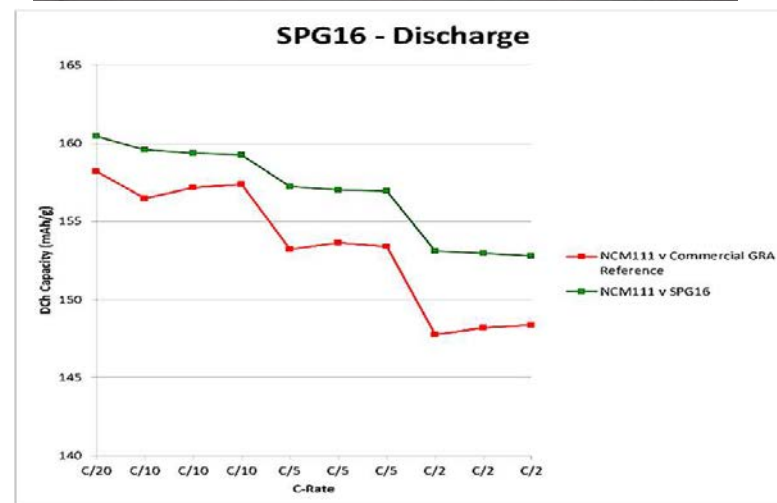
Source: NI 43-101 Technical Report and Preliminary Economic Assessment (July 2021)

Lomiko advantage: Ranked as the seventh biggest deposit worldwide by Mining.COM

	Property	Country	Owner	Development Status	M+I Resources (mt)	Grade (%)	Contained Graphite (mt)
1.	Balama/Nicanda Hill	Mozambique	Triton Minerals Ltd	Stalled (previously Feasibility)	369	11.3	41.7
2.	Sarytogan	Kazakhstan	Sarytogan Graphite Limited	Prefeasibility	126	28.8	36.3
3.	Lac Gueret (Uatnan)	Canada	Mason Resources Inc	PEA	66	17.19	11.3
4.	Mahenge	Tanzania	Black Rock Mining Ltd	Permitting	116	8.02	9.3
5.	Siviour	Australia	Renascor Resources Limited	Permitting	73	7.14	5.2
6.	Epanko	Tanzania	EcoGraf Ltd	Permitting	63	7.6	4.8
7.	La Loutre	Canada	Lomiko Metals Inc	Prefeasibility	65	4.5	2.9
8.	Malingunde	Malawi	NGX Limited	Prefeasibility	37	7.37	2.7
9.	Balama Central	Mozambique	Tirupa Graphite plc	Permitting	27	10.24	2.7
10.	Bunyu	Tanzania	Volt Resources Limited	Feasibility	40	5.64	2.3

La Loutre single-layer pouch full-cell battery testing met and surpassed commercial graphite results

- ✓ Demonstrated that La Loutre material is suitable for battery applications – single layer pouch full cell battery testing completed with Polaris Battery Labs, LLC, USA.
- ✓ The single-layer pouch cells constructed with La Loutre graphite anode and standard cathode material: cSPG16 and cSPG20 samples from La Loutre reveal strong performance of the La Loutre cSPG with better discharging capacity compared to commercial graphite material in North America today (358-367mAh) depending on the purification methods
- ✓ Both samples were put through a brief life cycle analysis for 25 cycles at C/2 and performed well.
- ✓ Figure top - Lomiko graphite Single layer pouch batteries produced and tested by Polaris
- ✓ Figure bottom - SPG20 sample from La Loutre has better charging/discharging capacity compared to commercial graphite in the market today in North America.



Next Steps – Phase 2 works: metallurgical and battery trials

- CRITM Quebec studies
 - Lab testing to set bulk sample processing conditions
 - Process 1,100kg of the material to generate flotation flakes
 - NRC- 2000-cycle battery tests
- Polaris
 - Further 500-cycle battery testing
- Air Classification Testing
 - Upgrade crushed ore to +97%Cg without the use of water
 - Use the pressured air to separate waste and graphite
- Graphene testing
 - Produce graphene for use in paints, additives and specialty batteries
- Initiating the 200t bulk sample with local operators
 - Started permitting of the 4-5 test locations in EV Zone

Antimony Exploration

Antimony

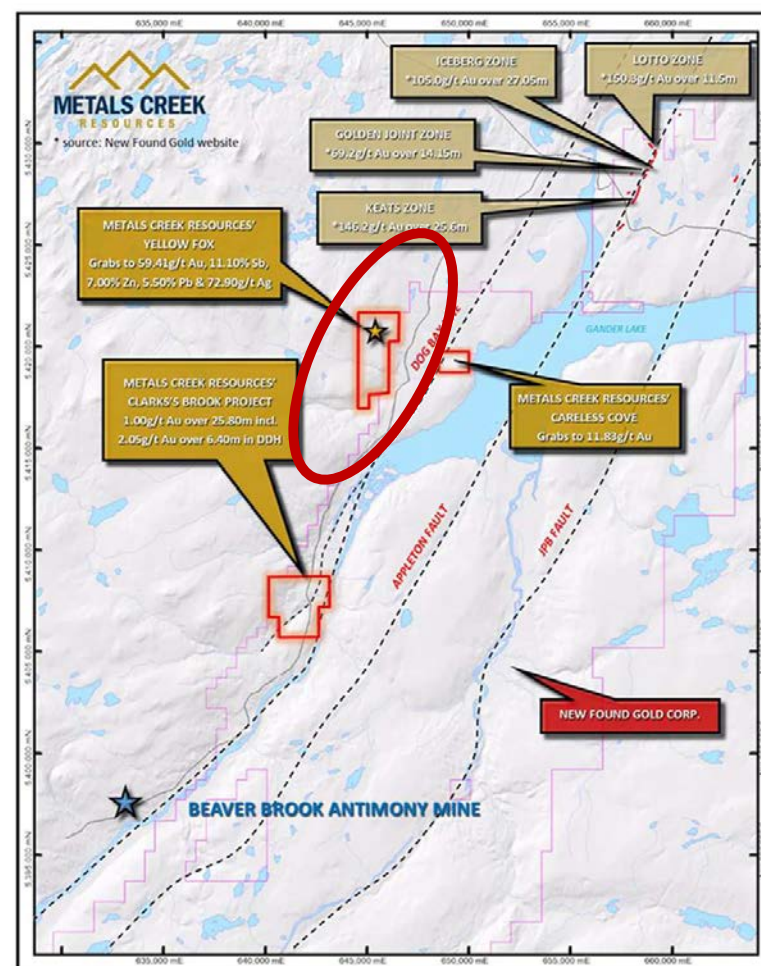
- Antimony is used to increase the hardness of alloys, with lead alloys for batteries, with lead/copper/tin alloys for machine bearings
- It improves the rigidity of lead-alloy plates in lead–acid batteries
- It is also used in automotive clutch and brake parts
- The other major use is as antimony trioxide which is used for the production of flame retardant chemicals
- Antimony is used in the semi-conductor industry for certain silicone wafer, diode, and infra-red detector production
- Small amounts are used in the production of safety matches



Yellow Fox antimony, silver and gold potential in Newfoundland

Historic results

- Yellow Fox is an early-stage exploration property prospective in antimony, gold, and silver where historic works returned samples anomalous in gold (Au), antimony (Sb), lead (Pb), zinc (Zn), and silver (Ag).
- The trenching exposed the rocks, resulting in grab samples to 59.43g/t Au, 11.10% Sb, 7.00% Zn, 72.90g/t Ag, and 5.50% Pb in arsenopyrite-stibnite veins within altered monzogranite.
- This property is on the same trend as the past-producing antimony mine Beaver Brook, which is located 25km southwest of the property and on the same trend.
- Geologically, Yellow Fox exhibits similar traits to that of Beaver Brook with cross-cutting structural zones which show intense carbonate alteration with sulphide-bearing stringers to veins of stibnite and arsenopyrite with similar high-grade tenors of antimony, gold, lead, zinc, and silver. Arsenopyrite is also present in both locations.



Yellow Fox antimony prospect located 25km along the strike from Beaver Brook past producing antimony mine

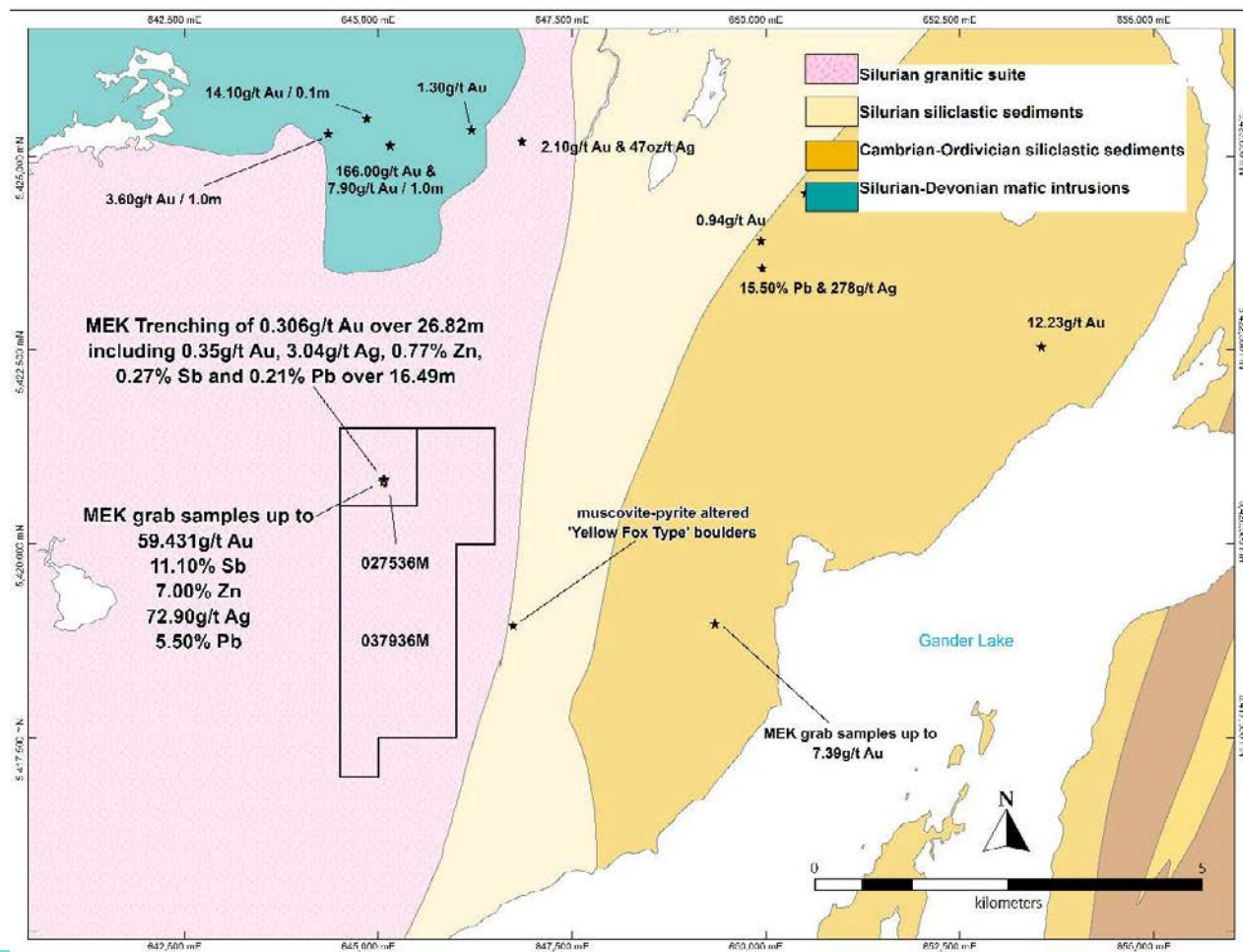
- This style of polymetallic Au–Ag–Sb–As mineralization is spatially associated with the major structural feature termed the Dog Bay Line
- Beaver Brook mine has been in existence for 20 years, and considering the relatively large size at 2.2 million tonnes and high grade @3.99% Sb at @1.5% cut off of the East zone deposit
- Roycefield Resources started the mine in 1997 and operated for 8 months; shut down due to slump in prices
- The mine reopened in 2008 and was acquired by the Chinese company Hunan Nonferrous Metals (HNC) in 2009 and China Minmetals Corp. and operated until the end of 2012 when it went into care and maintenance.
- Indicated resources at the East zone deposit, prior to restarting of the mine, was 1 062 600 tonnes @ 5.15% Sb. (Reeves, 2009),
- Based on an internal resource calculation (Beaver Brook Antimony Mine, internal report, 2013) a total of 533 370 tonnes @ 4.17% Sb remains in the East zone.
- Resources at the Central zone were determined to include 154 570 tonnes of ore at 5.62% Sb (Reeves, 2009); however, this does not include the results from the 2008– 2013 exploration drilling.

	2008	2009	2010	2011	2012	Total
Tonnes Milled DMT	73 710	83 524	137 355	162 598	142 105	599 283
Head Grade %	3.40	4.47	4.23	3.19	2.63	3.5
Concentrate Produced DMT	3492	5595	8945	8061	5814	31 906
Metal Produced DMT	2219	3593	5578	4958	3554	19 902

(Sandeman et al., 2017; H. Sandeman, unpublished data, 2017) Newfoundland geoscience data

Yellow Fox Next Steps

- Review existing data and plan for the fieldwork program in the spring
- Soil sampling program targeted south of the Yellow Fox gold, showing 59.413 g/t and areas of increased density of interpreted structures
- Approximately 700 soil samples on ten, 1000m long, 250m spaced lines trending approximately 70o with samples taken every 25m along the line.
- Should soil sampling program be proven effective, expansion of the lines and additional lines to the south are warranted



Share structure

Share structure

Lomiko has a tight capital structure with 48.7m shares outstanding

Lomiko Metals Inc

December 12, 2024

Total Issued and Outstanding	48,689,505
Options	2,174,000
Warrants	18,462,420
Broker Warrants	253,470
DSU	779,684
RSU	1,481,228
Fully Diluted	71,840,307

Lomiko collaborations



CRITM
vecteur de transformation métallique



**Femina
Collective**

corem
Innovation en traitement de minerais
Innovation in mineral processing

**Investissement
Québec
International**

SOQUEM

SGS



UNIVERSITÉ
LAVAL

Canada

National Research
Council Canada
Conseil national de
recherches Canada



For more information
info@lomiko.com

Follow us @lomikometals on socials



Yellow Fox antimony, silver and gold potential in Newfoundland

Terms of the Option

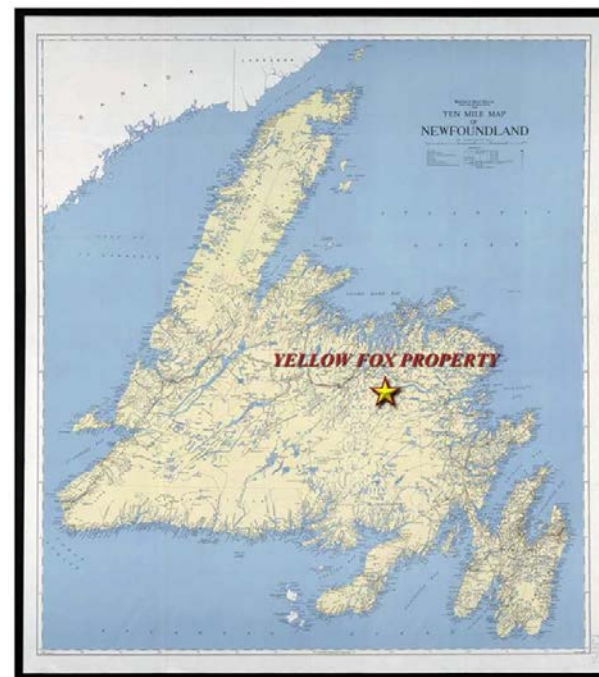
(a) The Optionee shall have the right to acquire 100% of the right, title and interest in and to the Option Interests by making the following payments:

(i) in cash totaling \$70,000, according to the following schedule:

1. on the Closing Date, \$20,000;
2. on or before first anniversary of this Agreement, \$25,000;
3. on or before second anniversary of this Agreement, \$25,000; and

(ii) in common shares of the Optionee (the “LMR Shares”) totaling \$355,000, at a price per LMR Share equal to the Market Price on the date of the signature of this Agreement according to the following schedule:

1. on the Closing Date, \$55,000 payable in LMR Shares;
2. on or before first anniversary of this Agreement, \$125,000 payable in LMR Shares; and
3. on or before second anniversary of this Agreement, \$175,000 payable in LMR Shares.



Graphite Portfolio 2024 Results

Ruisseau 2024 Results

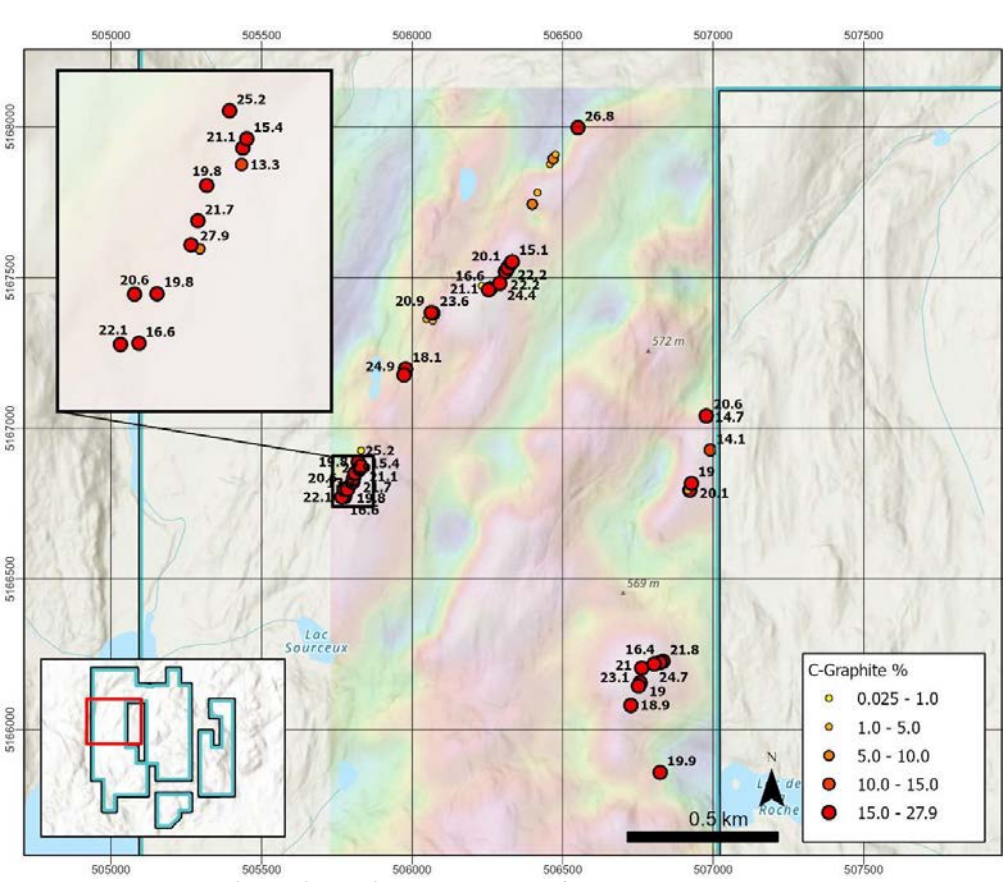


Figure 1a: Ruisseau West Results

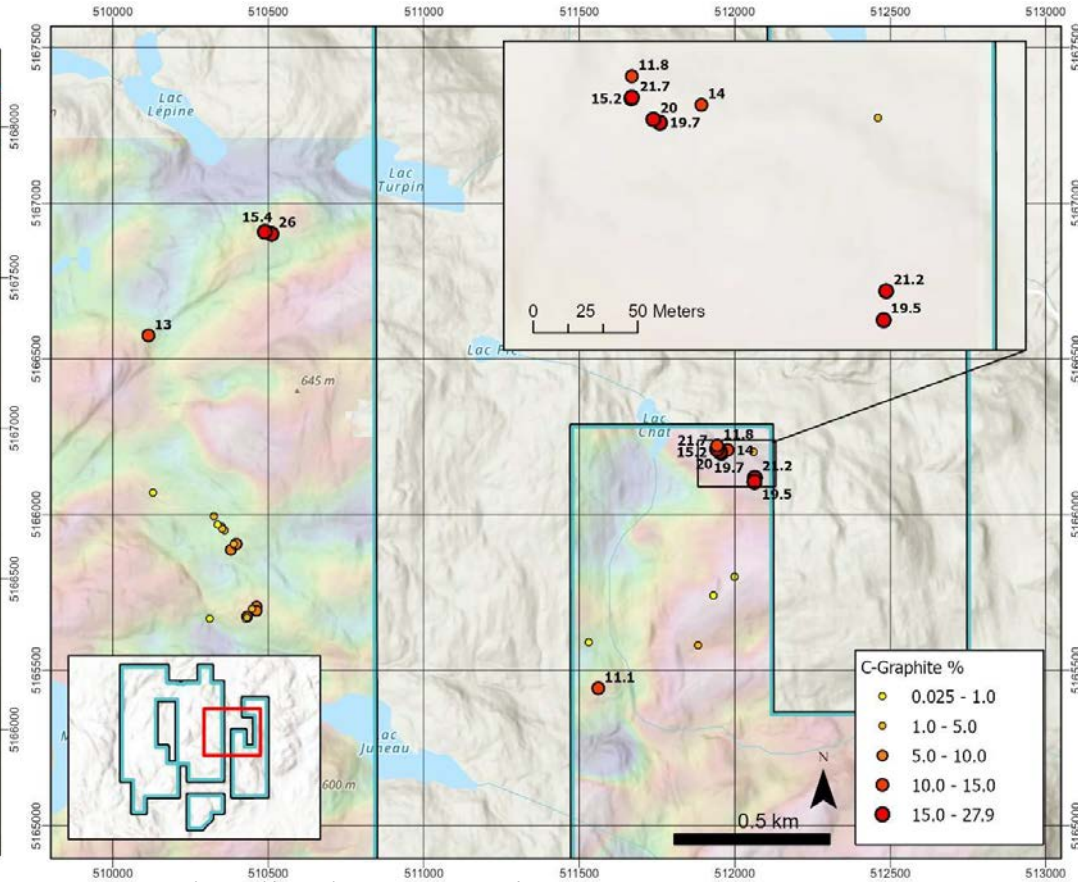
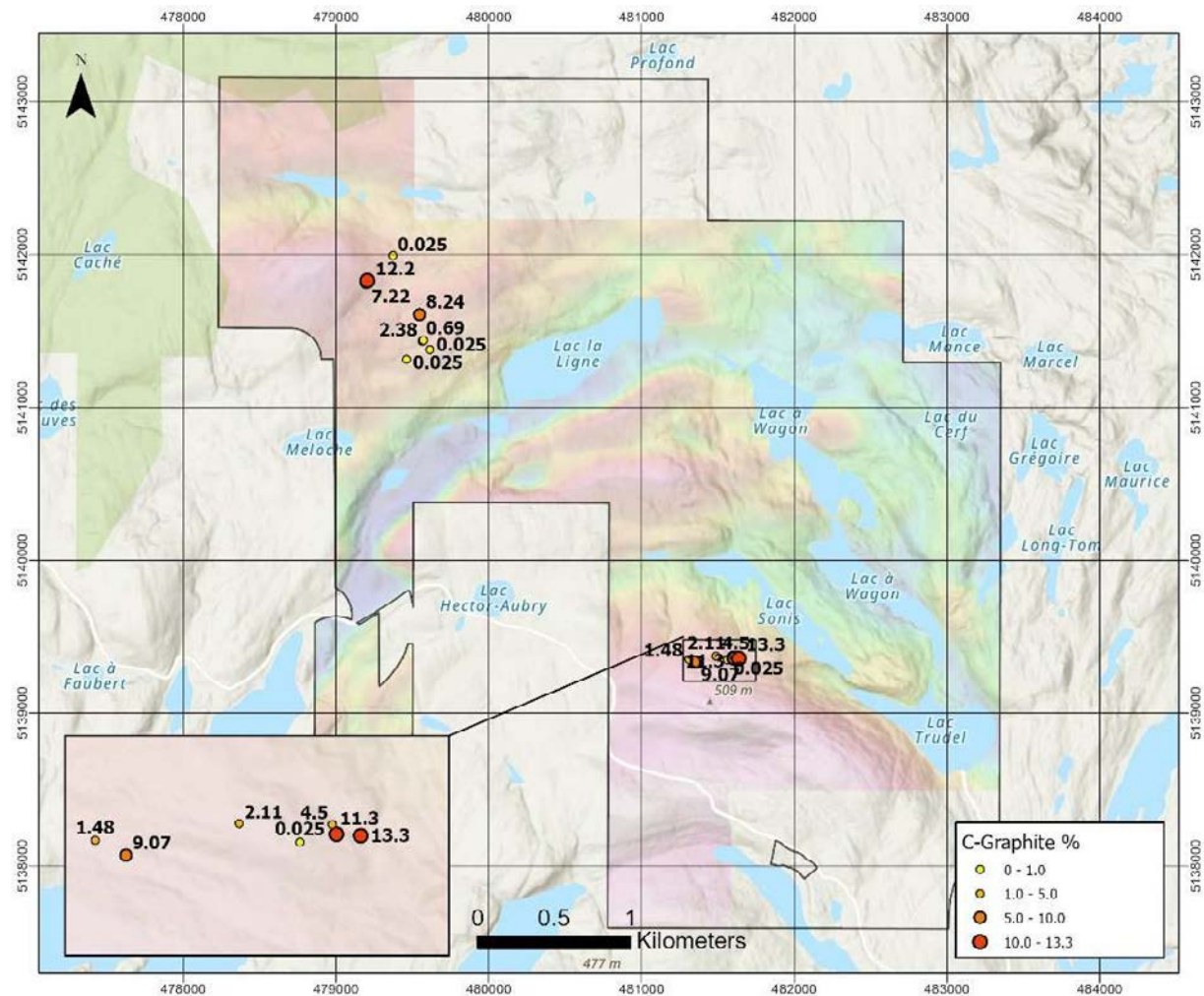
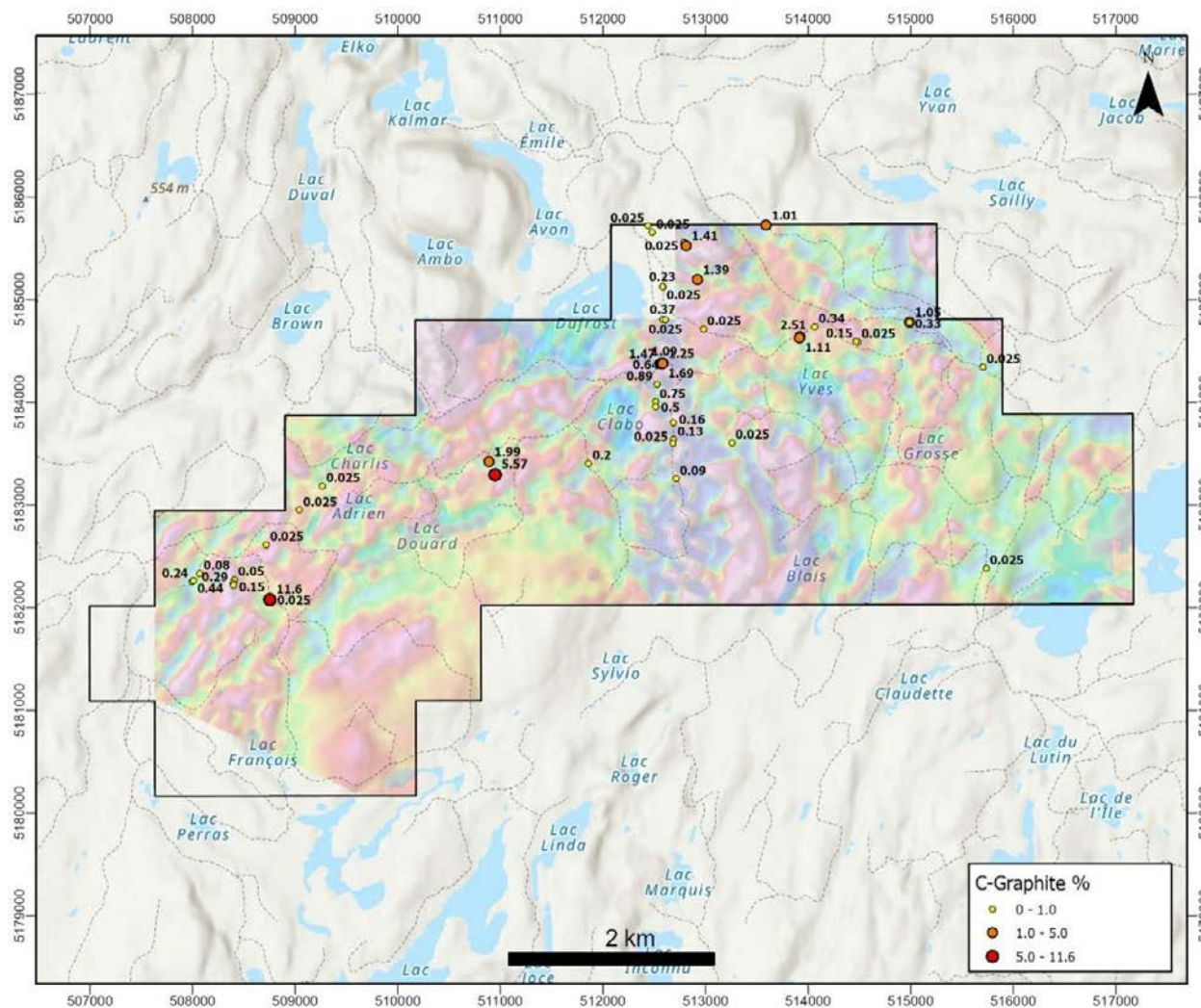


Figure 1b: Ruisseau East Results

Meloche 2024 Results



Tremblant 2024 Results



SGS Characterization Study, 2023

67% fines content in the flotation concentrate

- La Loutre flake distribution is ~67% fines - suitable for anode market **37% growth year over year!**
- -100 mesh is used most commonly in SPG (spherical graphite) as a precursor for battery production

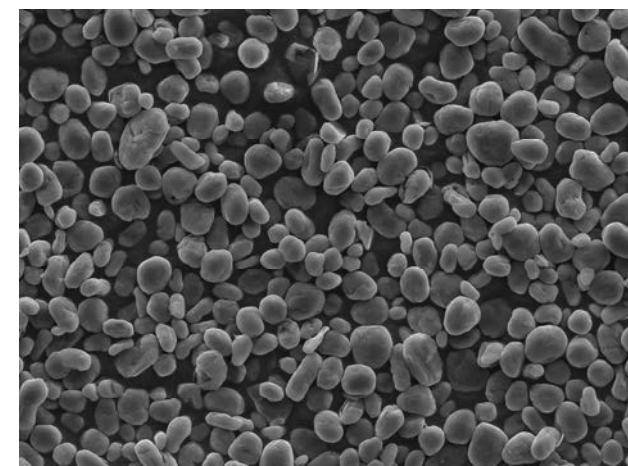


Size Fraction Analysis of Combined Concentrate of LCT – PFS Level MetPro Report Feb 2023

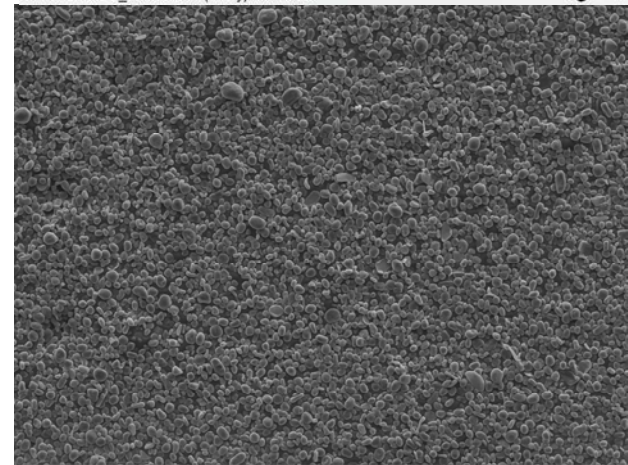
	Size (Mesh)	Size (µm)	Mass (%)	C(t) (%)	C(t) Distribution (%)
	32	500	0.4	98.3	0.4
	48	300	5.6	98.7	5.5
	80	180	18.1	98.3	17.9
33% of +100 mesh	100	150	9.5	98.8	9.4
	150	106	17.0	99.4	17.1
	200	75	18.6	99.6	18.7
	325	45	18.2	99.5	18.2
	-325	-45	12.7	99.1	12.7
	Final Concentrate		100	99.1	100

La Loutre metallurgical program 99.99% purified graphite content

- ✓ Completed PFS level met testing and optimized flow sheet
- ✓ Completed value-added testing with ProGraphite – micronization, spheroidization, and purification:
- ✓ **Proved that La Loutre material is suitable for battery applications - Spherical Graphite production yielded excellent results**
- ✓ **Achieving excellent 99.99%Cg SPG and flake purity**
- ✓ All physical characterization tests produced excellent results
- ✓ Achieved continuous and reliable production of micronized products with homogenous properties.
- ✓ Low specific energy input to convert the La Loutre flotation concentrate to micronized material.



SEM HV: 20.00 kV WD: 17.92 mm
View field: 288.9 µm Det: SE
Name: V409LO_00009 Date(m/d/y): 05/10/23



SEM HV: 20.00 kV WD: 17.92 mm
View field: 1.16 mm Det: SE
Name: V409LO_00012 Date(m/d/y): 05/10/23

Traditional Graphite Markets Opportunities in addition to EV-ICE and Energy Storage

- **Engineered Products** include electronics, agriculture, automotive, ceramics, government defence, carbon brushes, and fire retardants that use natural flake graphite. Graphite foils in sheets and rolls are used in electronics, nuclear applications, and other thermal management applications in this market group. Standard 95.0% Cg and High Purity 99.9% Cg
- **Expanded graphite** – LL graphite can be used for primary alkaline batteries, ceramics, and other electrochemistry applications. Expanded graphite can be purified through the Cl/thermal process to produce a high-purity product. Lomiko completed the testing on +50 and +80 mesh meeting and surpassing industry-level results
- **Lubricants** –Applications include grease, dispersions, dry, nuclear-grade, aerospace, agriculture, MIL-SPEC, rail and food-grade lubricants. Traditional and advanced graphite powder additives are used in all applications listed with standard 95.0%Cg and high purity 99.9% Cg grades in various mesh sizes and micron PSDs
- **Polymers and Plastics, rubbers, and coatings** will extend the life of consumer devices, automotive tires, reusable plastics, industrial bearings, and plastics used in antistatic films, coatings, and electronic packaging. Graphite powder is used as a lubricant or conductive additive, including power cables, PTFE, PEEK, seals, bearings, coatings, rubber seals, wiper blades, antistatic packaging, thermal plastics and paints. Based on both Corem and PH analytical reports, there are chemical markers of the La Loutre signature that are unique for use in coatings, seals, thermal plastics, and consumer goods.
- **Graphene** Graphene's manufacturing process uses natural flake graphite to produce a single layer, a few layers, and multi-layer plates. applications in high-frequency electronics, bio, chemical and magnetic sensors, ultra-wide bandwidth photodetectors, and energy storage and generation. Lomiko is undertaking studies to determine La Loutre graphite's suitability for graphene production. Graphene is a transparent and flexible conductor used in many high-tech applications.