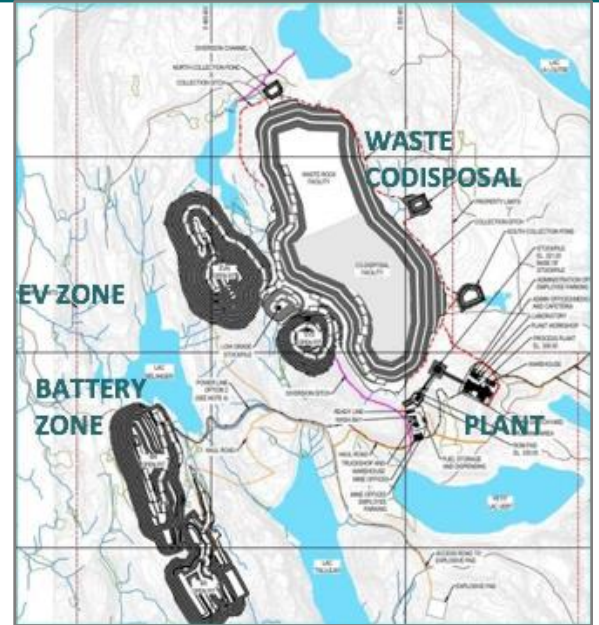


Lomiko's Projects

La Loutre Natural Flake Graphite

A positive PEA indicated the project has a 15-year mine life producing per year 100,000 tonnes of graphite concentrate at 95% Cg or a total of 1.5Mt of graphite concentrate.

- LOM plant throughput of 21.8 Mtonnes at 6.78% Cg.
- NPV of \$186M (8% post-tax).
- AISC US \$ 406/t of graphite concentrate.
- **Pre-feasibility study 50% complete including:**
- PFS level flotation tests produced graphite concentrate grade of up to 99.7% Cg! LCT testing confirms 98.6-99.1% Cg con grade at 94.7% recovery! Optimized PFS level plant flowsheet.
- **Additional purification studies completed in Q2 2023 show 99.99% graphitic carbon purity with low levels of impurities, confirming suitability for anode material.**
- Completed 13,100m drill program with 79 infill holes, **increasing Indicated resources by 184% from 1.1mt of in-situ graphite to 3.0mt** in addition to 0.7mt of inferred resource.
- **Completed half-cell coin battery trials achieving above average conductivity results**
- **Baseline data collection completed and ECOLOGO Certified**

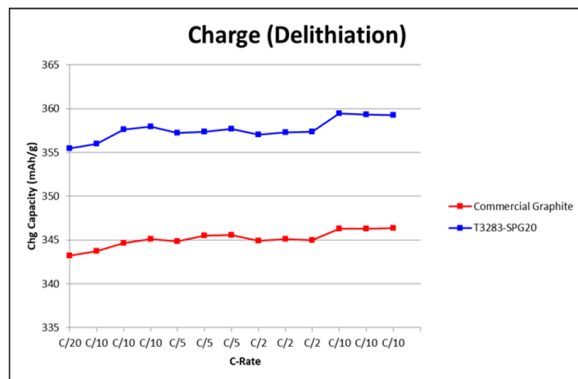
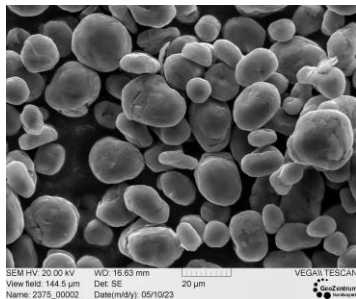


| Deposit | Cut-off (%) Cg | 2023 MRE | | | 2021 MRE | | |
|----------------------------|----------------|----------|---------|--------|----------|---------|--------|
| | | EV | Battery | TOTAL | EV | Battery | TOTAL |
| Indicated mineral resource | Tonnage (kt) | 24,267 | 40,429 | 64,696 | 8,158 | 15,007 | 23,165 |
| | Graphite (%) | 5.80 | 3.86 | 4.59 | 6.48 | 3.44 | 4.51 |
| | Graphite (kt) | 1,407 | 1,562 | 2,969 | 529 | 516 | 1,045 |
| Inferred mineral resource | Tonnage (kt) | 3,067 | 14,384 | 17,452 | 12,829 | 33,992 | 46,821 |
| | Graphite (%) | 4.29 | 3.60 | 3.72 | 5.81 | 3.33 | 4.01 |
| | Graphite (kt) | 132 | 518 | 650 | 745 | 1,132 | 1,878 |

Demonstrated that La Loutre material is suitable for battery applications – half-coin battery testing with Polaris Battery Labs, LLC, USA, is demonstrating higher reversible capacity compared to commercially available graphite, averaging 358mA/h



Lomiko SPG20



Lomiko graphite Half-cell batteries produced and tested by Polaris (SPG16 top, SPG20 bottom row) SPG20 sample from La Loutre has superior charging capacity compared to commercial graphite in the market today in North America.

Contact Us

info@lomiko.com

1-833-456-6456 or 1-833-4-LOMIKO

www.lomiko.com

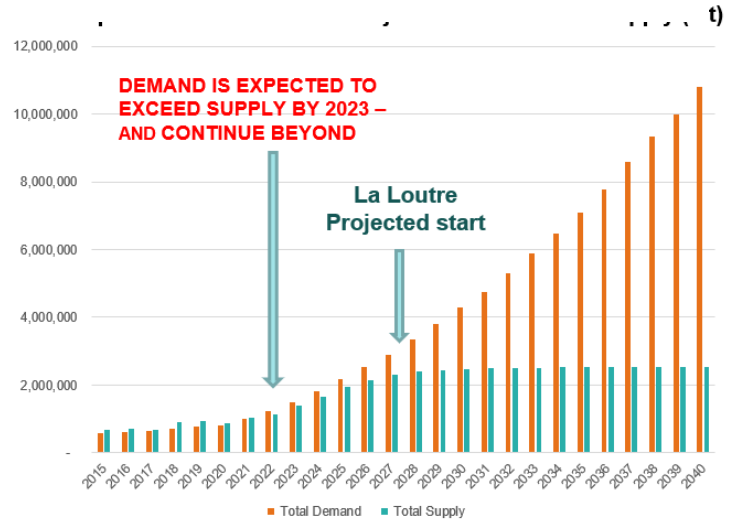
@LomikoMetals



LOMIKO
 METALS®

Why Lomiko?

- 55 targets identified within 236 claims in total, on 6 projects covering 14,255 hectares of mineral claims in the Laurentian region of Quebec and within KZA territory.
- A graphite shortfall will start in 2027, just as Lomiko anticipates having its La Loutre project in operation if funding is available to complete studies.
- Lomiko holds 3.6Mt of in-situ graphite in a high-potential region in Quebec – Grenville belt. 3.0Mt indicated.
- ESG at heart. Lomiko is 1 of 22 ECOLOGO-certified mining companies in Quebec.



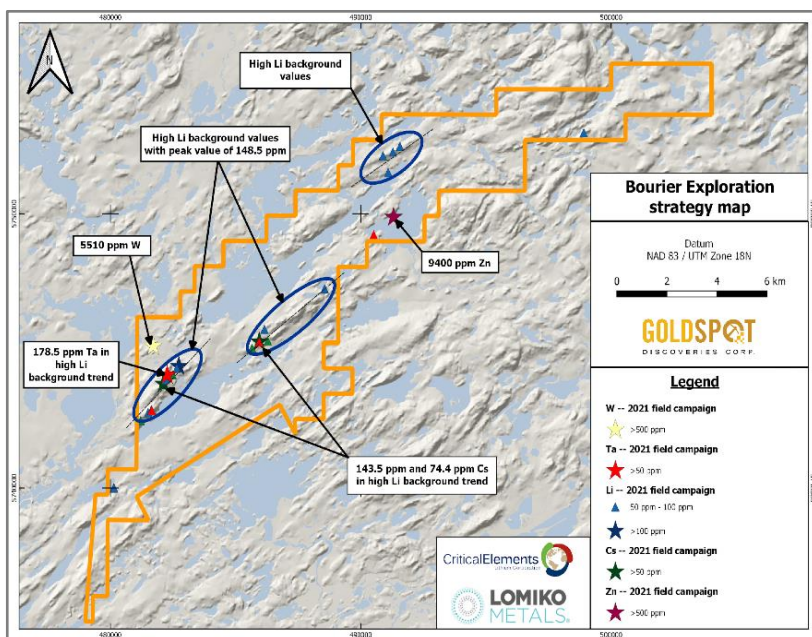
The Need for Secure, North American Critical Minerals

- EV battery demand in North America will be in a supply demand deficit position starting in 2023, increasing to negative 8mt by 2040.
- In 2022 federal budget, the Canadian Government pledged \$3.8 billion over eight years to develop Canada’s first critical minerals strategy.
- EV battery producers need secure, North American sources of components such as graphite. Inflation Reduction Act incentives for North American raw materials extraction and locally produced batteries and EVs

Bourier - Lithium

The Bourier project is potentially a new lithium field in an established lithium district. Lomiko acquired 49% ownership from CELC. Located on Nemiscau greenstone belt and at the Cree Eeyou Istchee James Bay territory in Quebec

- GoldSpot’s AI analysis revealed lithium potential over 2,5km anomalous zones with increased Li-Ta-Ce values



Graphite Projects portfolio – 6 in early stage & Carmin historic PFS

| Block | # samples | Min %Cg | Max %Cg | Comments |
|-----------|-----------|---------|---------|------------------|
| Boyd | 8 | 5.61 | 17.10 | 8/8 > 5.00% Cg |
| Dieppe | 11 | 0.15 | 1.47 | |
| Meloche | 6 | 5.62 | 12.00 | 6/6 > 5.00% Cg |
| Ruisseau | 26 | 0.16 | 22.90 | 19/26 > 5.00% Cg |
| Tremblant | 6 | <0.05 | 13.90 | 4/6 > 5.00% Cg |

