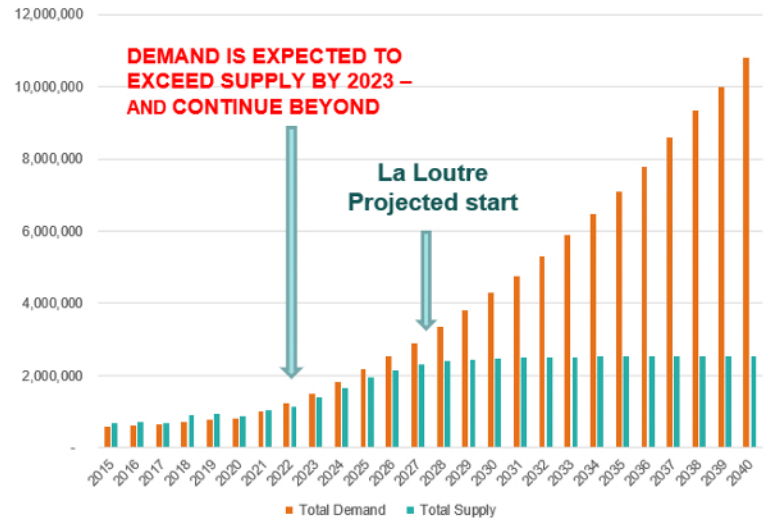


Why Lomiko?

- 55 targets identified within 236 claims in total, on 6 projects covering 14,255 hectares of mineral claims in the Laurentian region of Quebec and within KZA territory.
- A graphite shortfall will start in 2027, just as Lomiko anticipates having its La Loutre project in operation if funding is available to complete studies.
- Lomiko holds 3Mt of in-situ graphite in a high-potential region in Quebec – Grenville belt.
- ESG at heart. Lomiko is 1 of 22 ECOLOGO-certified mining companies in Quebec.
- Our team has extensive experience in growing businesses large and small, in mine construction and operations, and a deep understanding and respect for the long-term relationship-building and entrepreneurial support needed in our communities.
- Majority female executive team, majority female board, with First Nations and francophone representation

BUILDING A STOCKPILE OF CRITICAL MINERALS

Graphite Market Balance - Projected Demand and Supply (Mt)



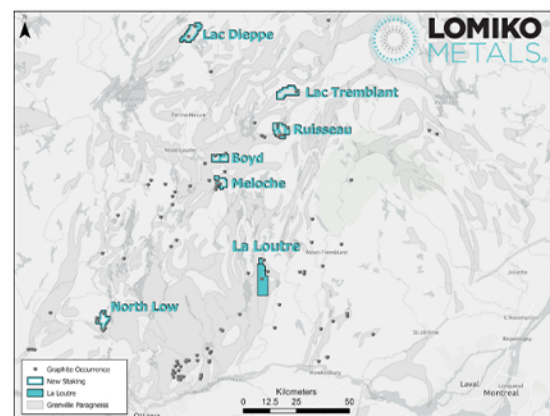
The Need for Secure, North American Critical Minerals

- EV battery demand in North America will be in a supply demand deficit position starting in 2023, increasing to negative 8mt by 2040.
- In 2022 federal budget, the Canadian Government pledged \$3.8 billion over eight years to develop Canada's first critical minerals strategy.
- North American vehicle manufacturers want to minimize freight charges and carbon emissions by buying EV batteries made in North America
- EV battery producers need secure, North American sources of components such as graphite. Inflation Reduction Act incentives for North American raw materials extraction and locally produced batteries and EVs

Expanded Graphite +80 Mesh



Graphite Projects



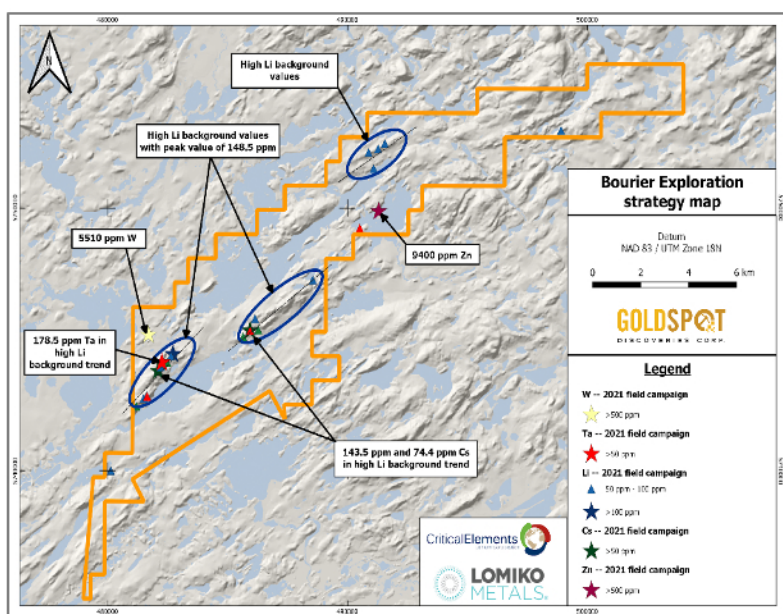
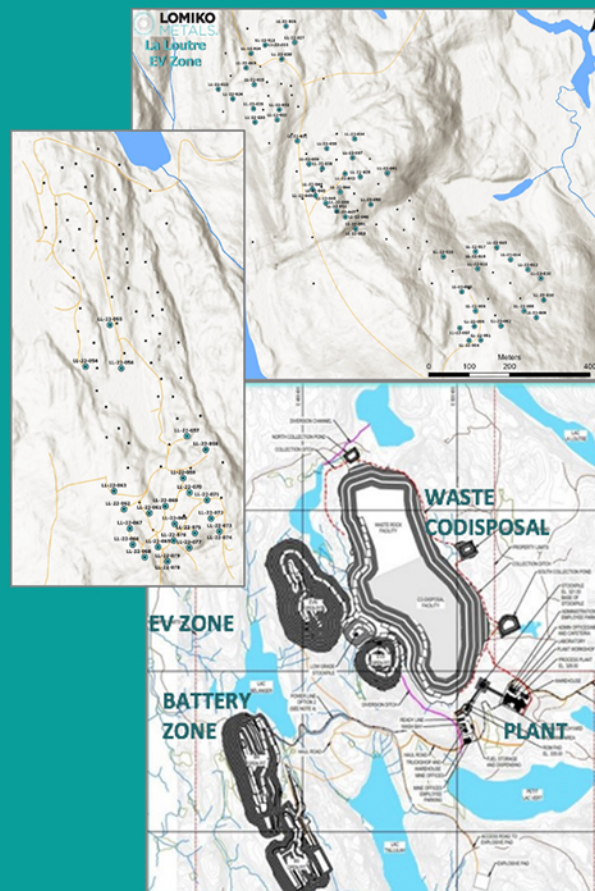
Lomiko's Projects

Lomiko is actively developing two main projects in addition to six newly acquired graphite properties in the province of Quebec: La Loutre, which is held 100% by Lomiko and is being explored for high-grade large flake graphite, and Bourier, which has been optioned by Lomiko and is being explored for lithium.

La Loutre - Natural Flake Graphite

A positive PEA indicated the project has a 15-year mine life producing per year 100,000 tonnes of graphite concentrate at 95%Cg or a total of approximately 1.5Mt of graphite concentrate.

- LOM plant production of 21.8 Mtonnes of mill feed at 6.78% Cg
- NPV of \$186M (8% post-tax).
- AISC US \$ 406/t of graphite concentrate.
- **PFS level flotation tests produced graphite concentrate grade of up to 99.7%Cg! LCT testing confirm 98.6-99.1% Cg con grade at 94.7% recovery! Optimized PFS level plant flowsheet.**
- Initial purification studies completed in Q2 2022 show 99.95% graphitic carbon purity with low levels of impurities.
- Completed 13,100m drill program with 79 infill holes confirming existing mineralization and grades and discovering new graphite zones in marble. Extremely wide zones at 210.9 meters of graphite mineralization grading 7.09% Cg!
- **Q1/Q2 2023 - NI-43-101 resource estimate - PFS studies to continue in Q3-Q4 2023.**
- **Q1/Q2 metallurgical studies to confirm suitability for anode material, value-added applications and complete battery trials**
- **Baseline data collection completed and ECOLOGO Certified**



Bourier - Lithium

The Bourier project is potentially a new lithium field in an established lithium district. It is owned by Critical Elements Corporation, which has entered into an agreement with Lomiko Metals whereby Lomiko may acquire up to 70% of the property. Located on Nemiscau greenstone belt and at the Cree Eeyou Istchee James Bay territory in Quebec

- GoldSpot's AI analysis revealed considerable lithium potential over 2,5km anomalous zones with increased Li-Ta-Ce values
- 2022 field program confirming anomalous values for Li-Ce-Ta
- Geochemical studies underway prior to 2023 exploration season

Contact Us

info@lomiko.com
1-833-456-6456 or 1-833-4-LOMIKO
www.lomiko.com

