



LOMIKO
METALS®

Developing a pipeline of
graphite and lithium properties
in **Quebec** for
a North American
climate success story

TSXV: LMR
OTC: LMRMF
Frankfurt: DH8C

December 2022



DISCLAIMER

This presentation is not a prospectus, offering memorandum or an advertisement and is being provided for information purposes only and does not constitute or form part of, and should not be construed as, an offer or invitation to sell or any solicitation of any offer to purchase or subscribe for any securities of Lomiko Metals Inc. (the “**Corporation**”) in Canada, the United States or any other jurisdiction. Neither this presentation, nor any part of it, nor anything contained or referred to in it, nor the fact of its distribution, should form the basis of or be relied on in connection with or act as an inducement in relation to a decision to purchase or subscribe for or enter into any contract or make any other commitment whatsoever in relation to any securities of the Corporation.

This presentation contains "forward-looking information" within the meaning of the applicable Canadian securities legislation that is based on expectations, estimates, projections and interpretations as at the date of this presentation. The information in this presentation about the Corporation; and any other information herein that is not a historical fact may be "forward-looking information" (“**FLI**”). All statements, other than statements of historical fact, are FLI and can be identified by the use of statements that include words such as "anticipates", "plans", "continues", "estimates", "expects", "may", "will", "projects", "predicts", “proposes”, “potential”, “target”, “implement”, “scheduled”, “intends”, “could”, “might”, “should”, “believe” and similar words or expressions. FLI in this presentation includes, but is not limited to: the Corporation’s objective to become a responsible supplier of critical minerals, exploration of the Corporation’s projects, including expected costs of exploration and timing to achieve certain milestones, including timing for completion of exploration programs; the Corporation’s ability to successfully fund, or remain fully funded for the implementation of its business strategy and for exploration of any of its projects (including from the capital markets); any anticipated impacts of COVID-19 on the Corporation’s business objectives or projects, the Corporation’s financial position or operations, and the expected timing of announcements in this regard. FLI involves known and unknown risks, assumptions and other factors that may cause actual results or performance to differ materially. This FLI reflects the Corporation’s current views about future events, and while considered reasonable by the Corporation at this time, are inherently subject to significant uncertainties and contingencies. Accordingly, there can be no certainty that they will accurately reflect actual results. Assumptions upon which such FLI is based include, without limitation: current market for critical minerals; current technological trends; the business relationship between the Corporation and its business partners; ability to implement its business strategy and to fund, explore, advance and develop each of its projects, including results therefrom and timing thereof; the ability to operate in a safe and effective manner; uncertainties related to receiving and maintaining exploration, environmental and other permits or approvals in Quebec; any unforeseen impacts of COVID-19; impact of increasing competition in the mineral exploration business, including the Corporation’s competitive position in the industry; general economic conditions, including in relation to currency controls and interest rate fluctuations.

The Corporation’s actual results, programs and financial position could differ materially from those anticipated in such FLI as a result of numerous factors, risks and uncertainties, many of which are beyond the Corporation’s control. These include, but are not limited to: the market for critical minerals; the evolution of supply and demand for critical minerals; the Corporation’s projects may not be explored or developed as planned; uncertainty relating to possible cost-overruns in implementing its business strategy and developing its projects; market prices affecting development of the projects; the availability and ability to secure adequate financing and on favourable terms; inability to obtain required governmental permits; any limitations on operations imposed by governments in the jurisdictions where we operate; technology risk; inability to achieve and manage expected growth; political risk associated with foreign operations; changes in government regulations, including currency controls; changes in environmental requirements; failure to obtain or maintain necessary licenses, permits or approvals; risks associated with COVID-19; insurance risk; litigation risk; receipt and security of mineral property titles and mineral tenure risk; changes in project parameters; uncertainties associated with estimating mineral resources and mineral reserves in the future, including uncertainties regarding assumptions underlying such estimates; whether mineral resources (if any) will ever be converted into mineral reserves; opposition to exploration and/or development of the projects; surface access risk; geological, technical, drilling or processing problems; health and safety risks; unanticipated results; unpredictable weather; unanticipated delays; reduction in demand for minerals; intellectual property risks; dependency on key personnel; workforce and equipment availability; currency and interest rate fluctuations; and volatility in general market and industry conditions.

This Presentation has not been independently verified and the information contained within may be subject to updating, revision, verification and further amendment. Except as otherwise provided for herein, neither the Corporation, nor its directors, officers, shareholders, agents, employees or advisors give, has given or has authority to give, any representations or warranties (express or implied) as to, or in relation to, the accuracy, currency, reliability or completeness of the information or opinions in this Presentation, or any revision thereof, or of any other written or oral information made or to be made available to any interested party or its advisers and liability therefore is expressly disclaimed for any loss howsoever arising, directly or indirectly, from any use of such information or opinions or otherwise arising in connection therewith.

Except as may be required by applicable law, in furnishing this presentation, the Corporation does not undertake or agree to any obligation to provide the recipient with access to any additional information or to update this presentation or to correct any inaccuracies or omissions. Information contained in this presentation is the property of the Corporation and it is made available strictly for the purposes referred to above.

Land Acknowledgement

We would like to begin by acknowledging that the land/projects where we operate are located within the traditional land of the Algonquin Anishnaabeg and Cree Eeyou Istchee Peoples.

Our vision is to embrace Indigenous people and Indigenous values within our projects in order to develop a sustainable approach on our path to critical minerals while honouring the lives, memories, and hopes of all seven generations close.

The La Loutre graphite project site is located within the Kitigan Zibi Anishinabeg (KZA) First Nations territory. The KZA First Nations are part of the Algonquin Nation and the KZA territory is situated within the Outaouais and Laurentides regions.

The Bourier lithium project site is located south-east of the Eeyou Istchee James Bay territory in Quebec near Nemaska Lithium and Critical Elements.

2022 Operational milestones

PFS studies and corporate development

- ✓ Completed 13,000m+ of drilling at La Loutre with exceptional results
- ✓ Acquired 6 graphite properties in Grenville province
- ✓ Initiated early soil and surface sampling at Bourier
- ✓ Completed 12 months of environmental baseline studies
- ✓ Completed initial value-added metallurgical studies on La Loutre graphite

Lomiko vision

- ✓ Completed multiple community engagement sessions
- ✓ Completed ECOLOGO certification process
- ✓ Developed Quebec presence with AEMQ, SOQUEM, IQ, Corem, and others

Investor focus

- ✓ Over \$4m raised to progress studies for PFS approx. 50% complete



2022 and 2023 momentum

2023 looks good: Dramatic increase in attention to battery metals supply chain

- ✓ Over \$3bn available in Canadian funding for critical minerals strategy – grants to be made available in 2023
- ✓ Determination that Canadian minerals are ‘domestic’ in USA and that Lomiko qualifies for DOD funding application
- ✓ Dramatic increase in spending: 2x investment into Electric Vehicles forecast by automakers, nearly \$1.2 trillion in 2023, according to Reuters
- ✓ Increase in demand for natural flake graphite to 40% year on year, according to Fastmarkets
- ✓ Canada rules! Canada climbs to 2nd place as best place to develop renewable energy, in front of the USA

The energy transition opportunity continues to be the most important Canadian economic growth opportunity in generations

MINÉRAUX CRITIQUES ET STRATÉGIQUES AU QUÉBEC

Version du 13 février 2020

UN POTENTIEL À EXPLOITER

Graphite

Plusieurs projets de graphite sont en activité au Québec.

- 1 Lac-des-Îles**
Imerys Graphite et Carbon Canada
Mine active
- 2 Lac Guéret**
Mason Graphite
Mise en valeur
- 3 Matawinie**
Nouveau Monde Graphite
Mise en valeur
- A Lac Knife**
Focus Graphite inc.
Gîte
- B La Loutre**
Corporation Métaux Précieux du Québec
Gîte
- C**
Canada Carbon
Gîte
- D Bell Graphite**
Saint Jean Carbon
Gîte
- E Mousseau West**
Gîte

Cobalt et éléments du groupe du platine

Deux mines exploitent le cobalt et les éléments du groupe du platine en sous-produits du nickel.

- 4 Raglan**
Glencore Canada Corporation
Mine active
- 5 Nunavik Nickel**
Canadian Royalties inc.
Mine active
- 6 Dumont Nickel**
Magneto Investments Limited Partnership
Mise en valeur
- F Bravo**
Exploration minière Jien Nunavik Itée
Gîte
- G Hawk Ridge**
Nickel North Exploration Corp.
Gîte
- H Lac Menarik**
Harfang Exploration inc.
Gîte
- I Lac Rocher**
Victory Nickel inc.
Gîte
- J Nisk-1**
Corporation Éléments Critiques
Gîte

Niobium

Le Québec est le deuxième producteur mondial de niobium et le seul de l'hémisphère nord.

- 7 Niobec**
Niobec
Mine active
- K Crevier**
Les Minéraux Crevier inc.
Gîte

Titane et vanadium

Le Québec est le premier producteur de titane sous forme d'ilménite au monde.

- 8 Lac Tio**
Rio Tinto Fer et Titane
Mine active
- 9 BlackRock**
Métaux BlackRock inc.
Mise en valeur
- L Vanadium-Lac Doré**
Vanadiumcorp Resource inc.
Gîte
- M Magpie**
The Magpie Mines Inc.
Gîte
- N Iron-1**
Vanadium Corp.
Gîte
- O Mont Sorcier Iron**
Vanadium One Iron Corp.
Gîte

Lithium

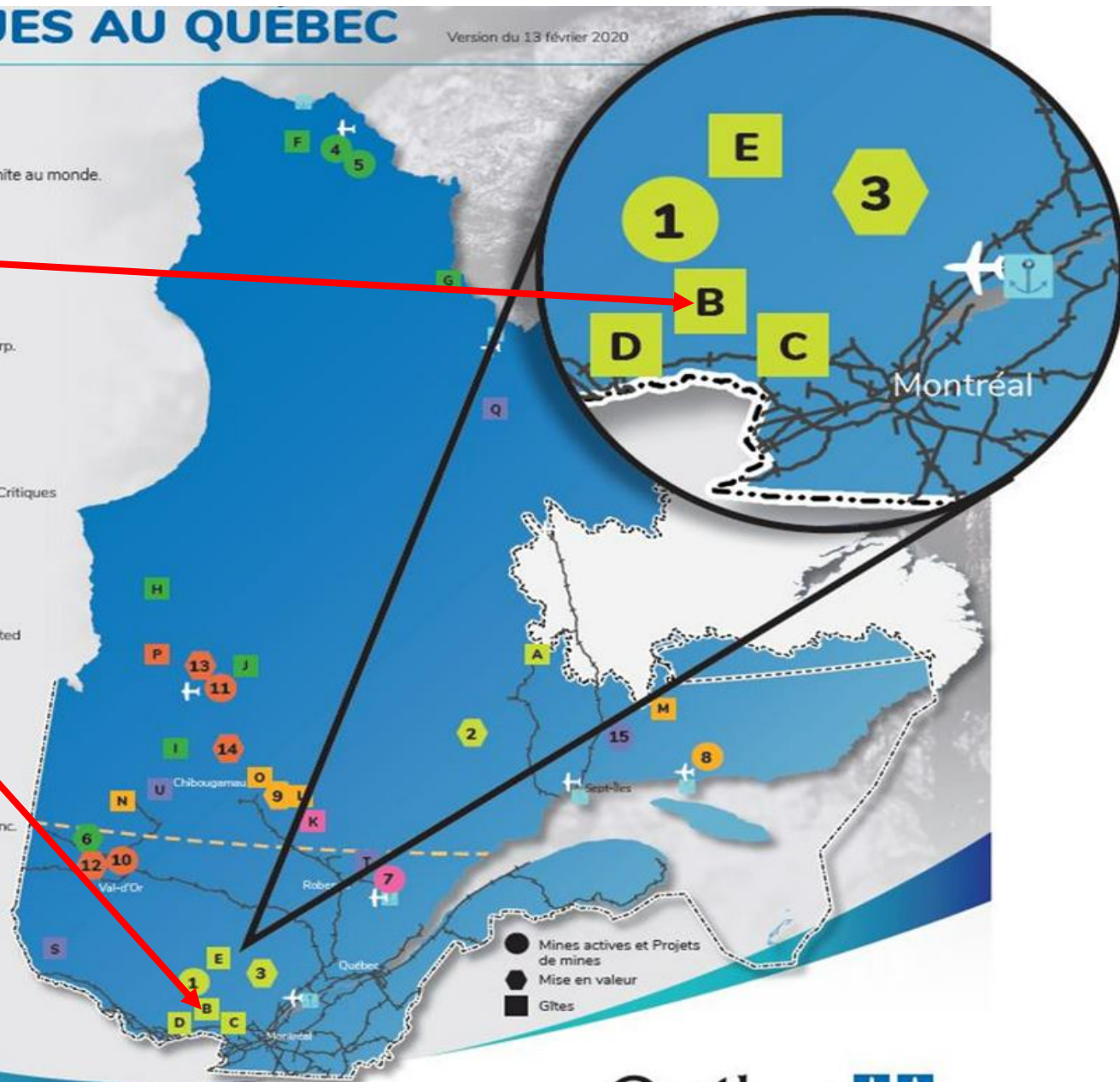
Le Québec détient un potentiel élevé en lithium.

- 10 Lithium Amérique du Nord**
Lithium Amérique du Nord
Mine en maintenance
- 11 Whabouchi**
Nemaska Lithium
Construction et rodage
- 12 Authier**
Sayona Québec
Mise en valeur
- 13 Rose**
Corporation Éléments Critiques
Mise en valeur
- 14 Moblan**
Lithium Guo Ao Ltée et SOQUEM inc.
Mise en valeur
- P James Bay**
Galaxy Resources Limited
Gîte

Éléments des terres rares

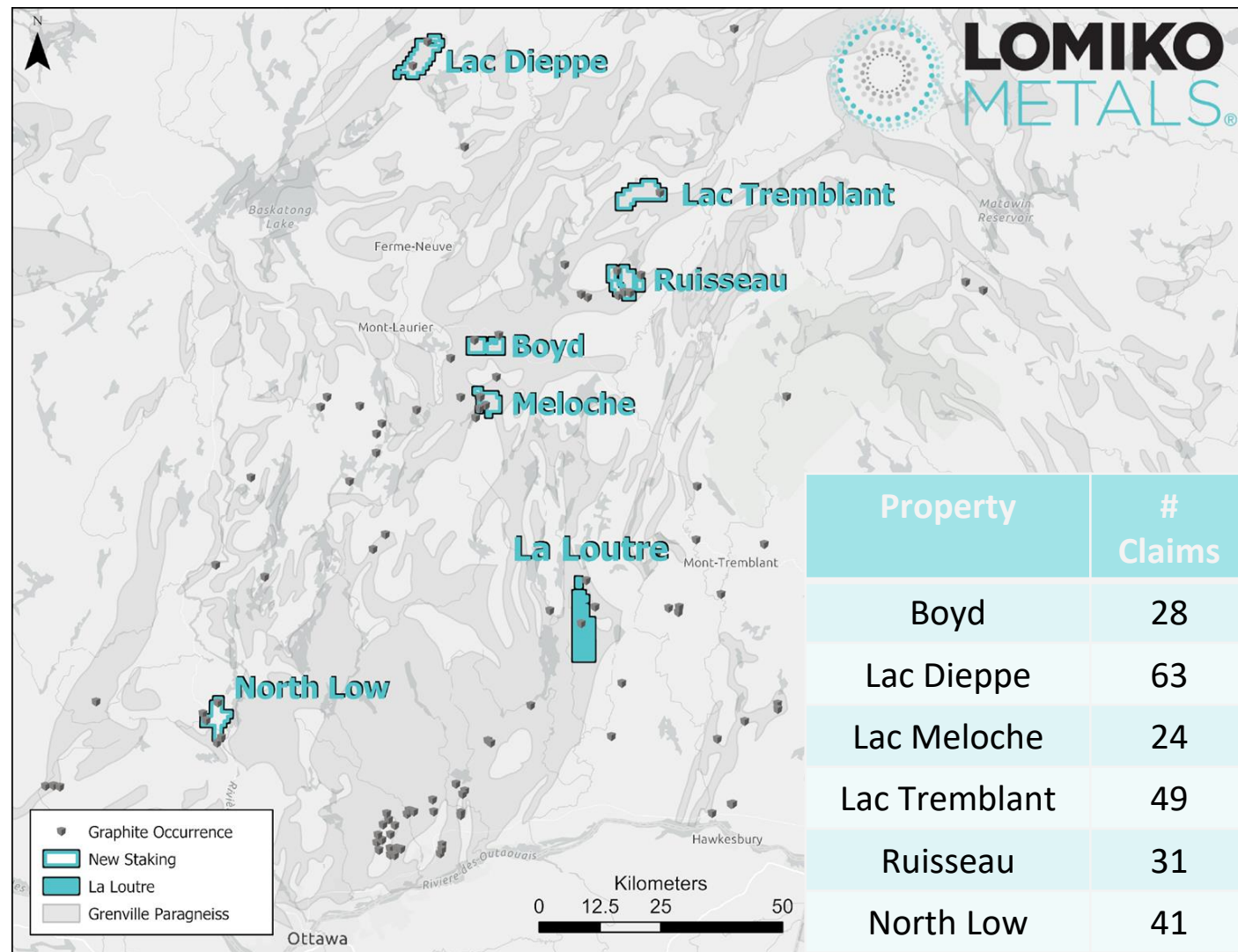
Le Québec renferme plusieurs dépôts de terres rares et il est reconnu comme ayant un potentiel à l'échelle mondiale.

- 15 Kwijibo**
SOQUEM
Mise en valeur
- Q Eldor (Ashram)**
Commerce Resources Corporation
Gîte
- R Strange Lake - Zone B**
Métaux Torngat Itée
Gîte
- S Kipawa (Zeus)**
Corporation Métaux Précieux du Québec et Ressources Québec inc.
Gîte
- T Niobec - REE Zone**
Niobec inc.
Gîte
- U Carbonatite de Montviel**
Ressources Géoméga inc.
Gîte



Lomiko new natural flake graphite claims: 14,255 hectares of mineral claims

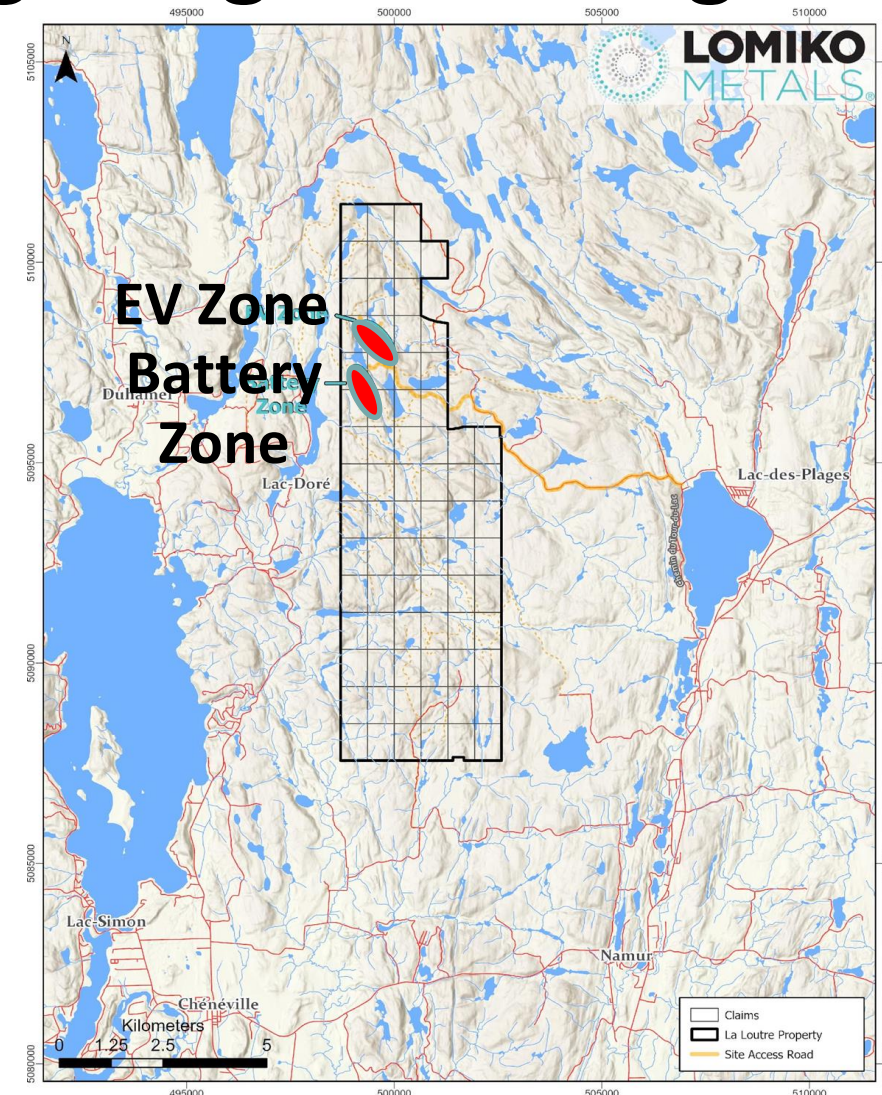
- 236 claims in total, on 6 projects in the Laurentian region of Quebec and within KZA territory
- Within a 100 km radius of the Company's flagship La Loutre graphite project
- Large disseminated flake graphite mineralization occurs at a number of places in the Grenville Province metamorphic belt
- **Next steps:** Review EM survey results



La Loutre graphite project close to infrastructure with great geological setting

La Loutre

- Stage of development: Preliminary Economic Assessment ("PEA")
- Starting Preliminary Feasibility Studies
- Concession size: 4,528 ha, 76 mineral claims
- Location: Quebec, Papineau - 192 km Highway to Port of Montreal – access to power, infrastructure & talent



La Loutre Resource Estimate: focus on conversion

La Loutre Resource Estimate (Effective Date: May 14, 2021) - PEA

Class	Cut-off	EV Deposit		Battery Deposit		Total		
	(%)	Run-of-Mine	In-Situ Grade	Run-of-Mine	In-Situ Grade	Run-of-Mine	In-Situ Grade	Graphite (kt)
		Tonnage (kt)	Graphite (%)	Tonnage (kt)	Graphite (%)	Tonnage (kt)	Graphite (%)	
Indicated	1	8,321	6.38	15,889	3.32	24,210	4.37	1,057.90
	1.5	8,158	6.48	15,007	3.44	23,165	4.51	1,044.30
	2	7,792	6.7	12,622	3.75	20,414	4.88	995.5
	3	6,768	7.33	4,529	6.16	11,297	6.86	774.6
	5	4,443	9.17	2,394	8.27	6,837	8.85	605.4
Inferred	1	13,114	5.71	38,273	3.1	51,387	3.77	1,936.40
	1.5	12,829	5.81	33,992	3.33	46,821	4.01	1,877.90
	2	12,273	5.99	27,775	3.69	40,048	4.39	1,759.50
	3	9,645	6.92	10,311	5.92	19,956	6.4	1,277.60
	5	5,833	8.99	5,687	7.58	11,520	8.29	955.2

Source: NI 43-101 Technical Report and Preliminary Economic Assessment (July 2021)

Notes:

- Resources are reported using the 2014 CIM Definition Standards and were estimated using the 2019 CIM Best Practices Guidelines.
- Mineral resources that are not mineral reserves do not have demonstrated economic viability. This report was prepared as National Instrument 43-101 Technical Report for Lomiko Metals Inc. by Ausenco Engineering Canada Inc., Hemmera Envirochem Inc., Moose Mountain Technical Services, and Metpro Management Inc., collectively the Report Authors.
- The mineral resource has been confined by a pit that reflects “reasonable prospects of eventual economic extraction” using the following assumptions: exchange rate CAD:USD=1.33; weighted average price of graphite of US\$890/t; 100% payable; off-site costs including transportation and insurance of C\$39.42/t; a 1.0% NSR royalty; and metallurgical recoveries of 95%.
- Pit slope angles are 45° below overburden, 20° in overburden.
- The specific gravity of the deposit is 2.86 in unmineralized and low-grade zones and 2.78 in high-grade zones (within solids above a 4% graphite grade).

La Loutre: PEA establishes a critical path ahead for improvements and project de-risking

- LOM plant production of 21,8 Mtonnes of mill feed at 6.78% Cg diluted.
- **Graphite concentrate production at 1.43 Mtonnes grading 95.0% Cg.**
- 14.7-year mine life producing 100,000tpy of graphite
- Capex of C \$236M, AISC US \$ 406/t Cg cost
- Exclusive mineral rights, 1.5% NSR
- Open circuit variability flotation tests produced **concentrate grades between 97.6% and 98.6% Cg.**



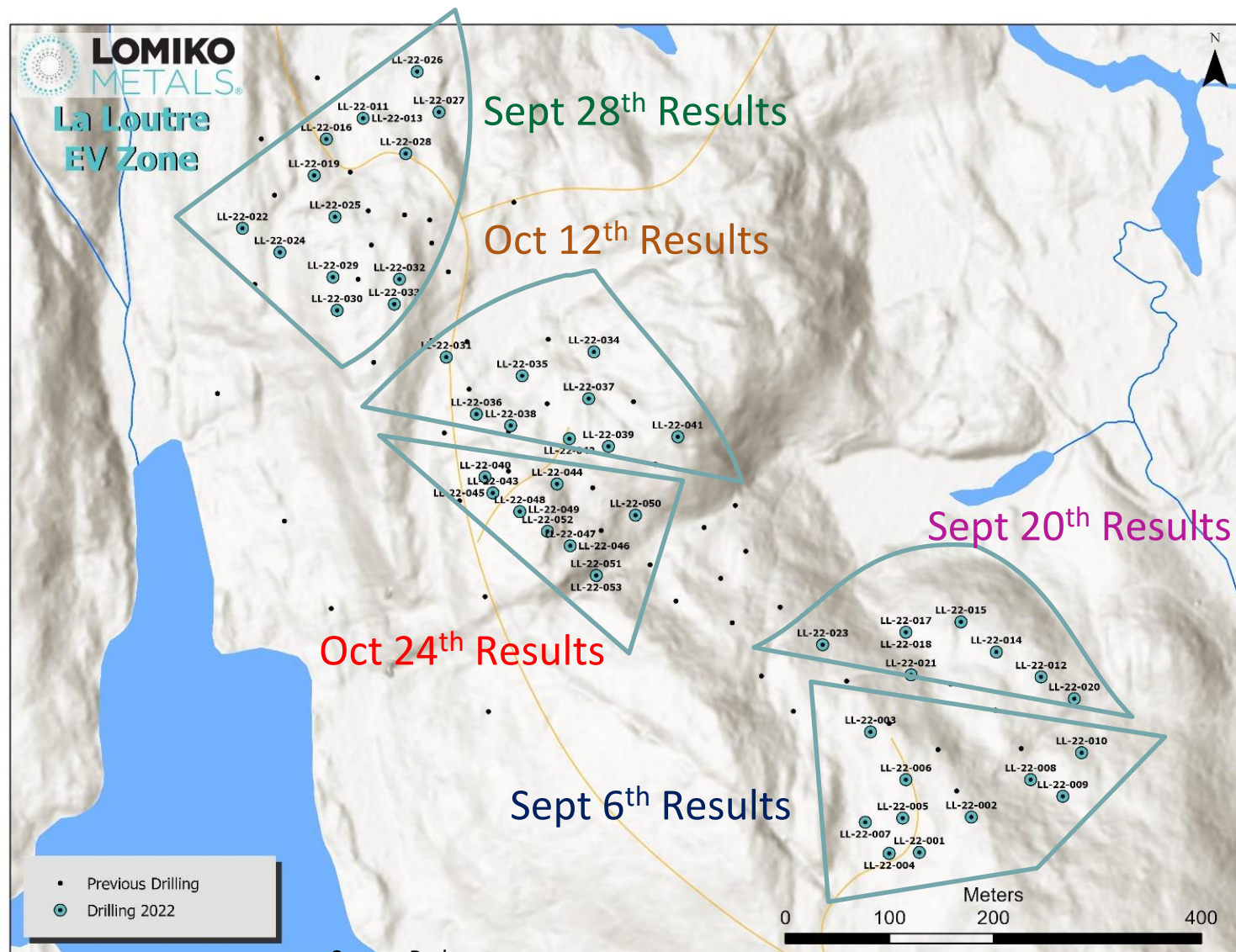
Source: NI 43-101 Technical Report and Preliminary Economic Assessment (July 2021)

2022 summer drilling program completed – Actual drilled

Completed summer Infill and extension drilling along the strike of the deposits to confirm ore body shape, quality and extents for a total of **13,113 metres in 79 holes**.

Focus on higher grade EV Zone

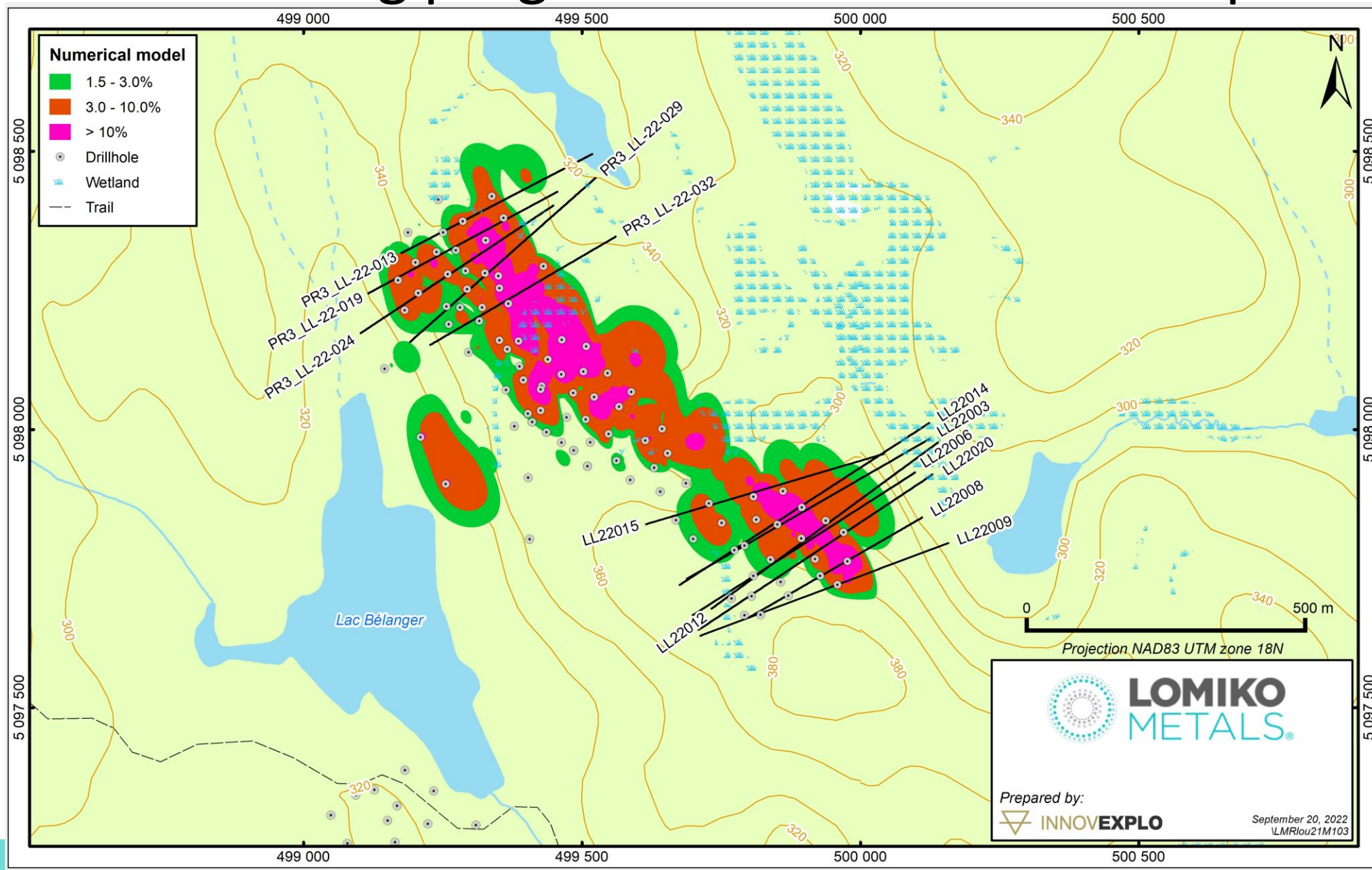
- Completed **53 drill holes in EV Zone** for a total of **9,025 meters**
- South-east and north-east end of the EV Zone remain open to the south and east
- *Discovered new mineralization in EV zone below existing modelled paragneiss mineralization in marble 9-10 meters thick*
- *Potential to add inferred resources*



Exploration Drilling Summary – La Loutre – press released

- Total holes drilled EV Zone – July 31st, 2022 – 53 holes drilled – 9,025 meters
- Assays received for 53 holes and results published with excellent widths and grades encountered including:
 - Wide intervals of near surface, high-grade flake graphite mineralization including **11.64% Cg over 42.0m** from 7.0 to 49.0m in hole LL-22-**018** including 36m wide mineralization at 13.44% Cg.
 - Result of **8.73% Cg over 110.5m** from 81.5 to 192.0m in hole LL-22-**019** including 69.0m at 12.09% Cg from 102.5 to 171.5m
 - Up to **13.84% Cg over 42.0m** from 169.0 to 211.0 in hole LL-22-**031**.
 - Several wide intervals of near-surface, high-grade flake graphite mineralization including **11.02% Cg over 120.00m** from 32.0 to 152.0m in hole LL-22-**032** including 48.0m at 15.58% Cg from 50.0 to 98.0m.
 - Up to **8.14% Cg over 148.5m** from 6.0 to 154.5m in hole LL-22-**035** including 15.09% Cg over 60.0m from 13.5m to 73.5m.
 - Hole LL-22-**042** encountered **8.68% Cg over 94.5m** from 4.5 to 99.0m and 6.64% Cg over 94.4m from 121.0 to 215.4m
 - Up to **7.60% Cg over 119.8m** from 81.2 to 201m in hole LL-22-**044** including 10.06% Cg over 40.5m from 81.2m to 121.7m and 10.31% Cg over 19.5m from 166.7 to 186.2m
 - Hole LL-22-**050** encountered **5.07% Cg over 123.0m** from 13.0 to 136.0m including 14.5% Cg over 22.5m from 14.5 to 37.0m.

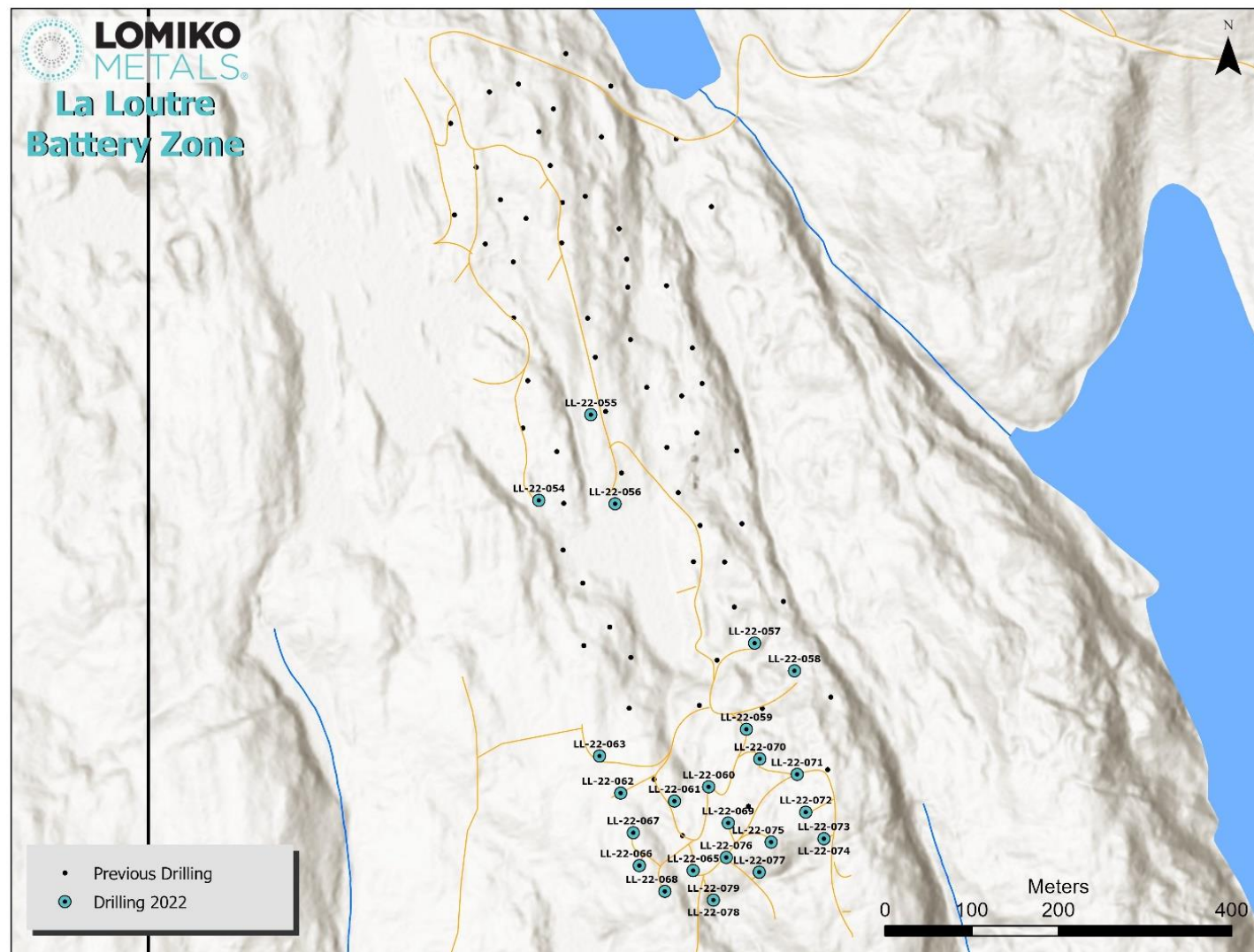
2022 summer drilling program – La Loutre EV Zone plan view



2022 summer drilling program completed – Battery Zone

Finished drill program at Battery Zone

- Completed **26 holes** in **Battery South** for a total of **4,076 meters**
- First 6 holes – highlights
- **4.49% Cg** over 144.3m in hole LL-22-054 including **8.43% Cg** over 55.5m
- Holes 7-16 – highlights
- **6.00% Cg** over 45.0m in hole LL-22-062 including **7.41% Cg** over 33.0m
- Awaiting assay results for the last 10 holes



Source: BreakawayX

La Loutre metallurgical program

Next steps

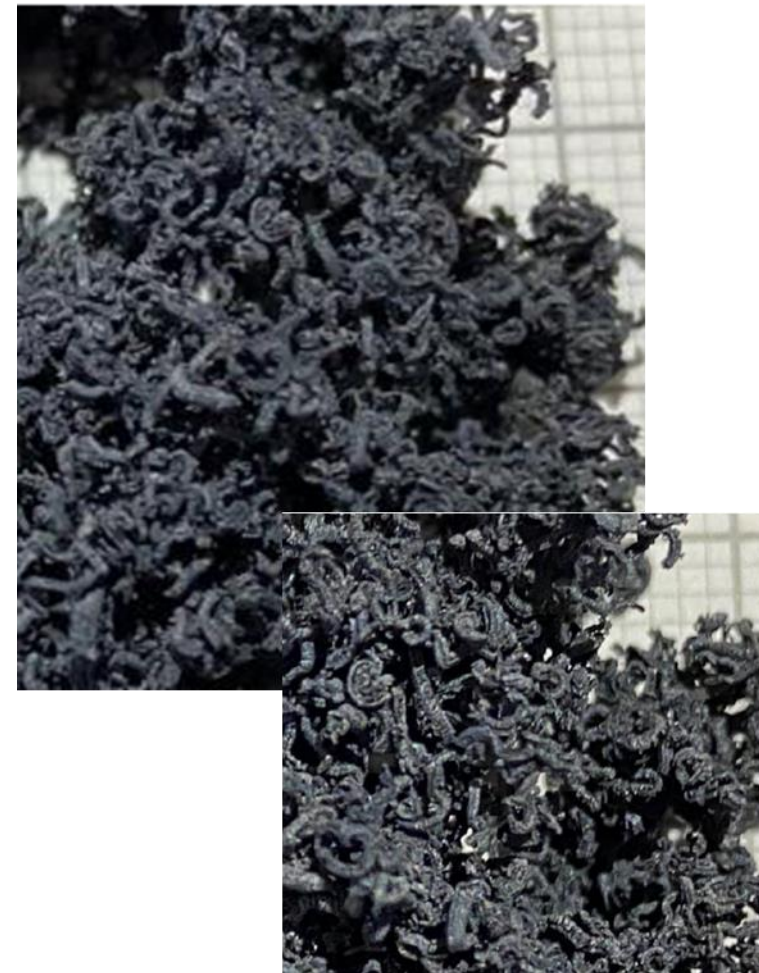
Next steps:

- Metallurgical testing being completed by SGS in Lakefield on over 800kg of the core
- Further testing for battery-grade material (micronization, spheroidization, purification and coating to produce CSPG)

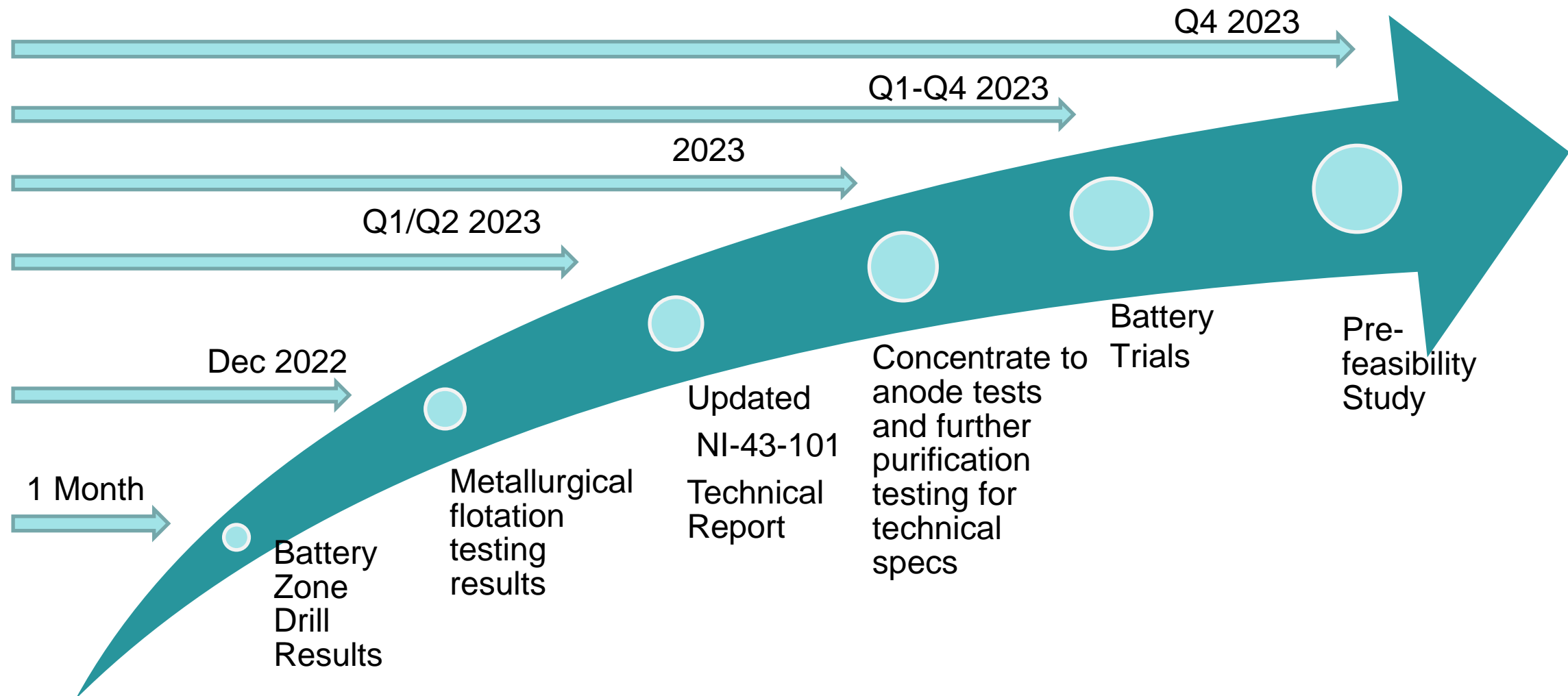
Develop relationships with potential customers

- Market investigation on pricing – working with consultants to further develop Technical Data Sheets and outline test programs to understand the deposits' unique “fingerprint”
- Opening discussions with Anode and car manufacturers

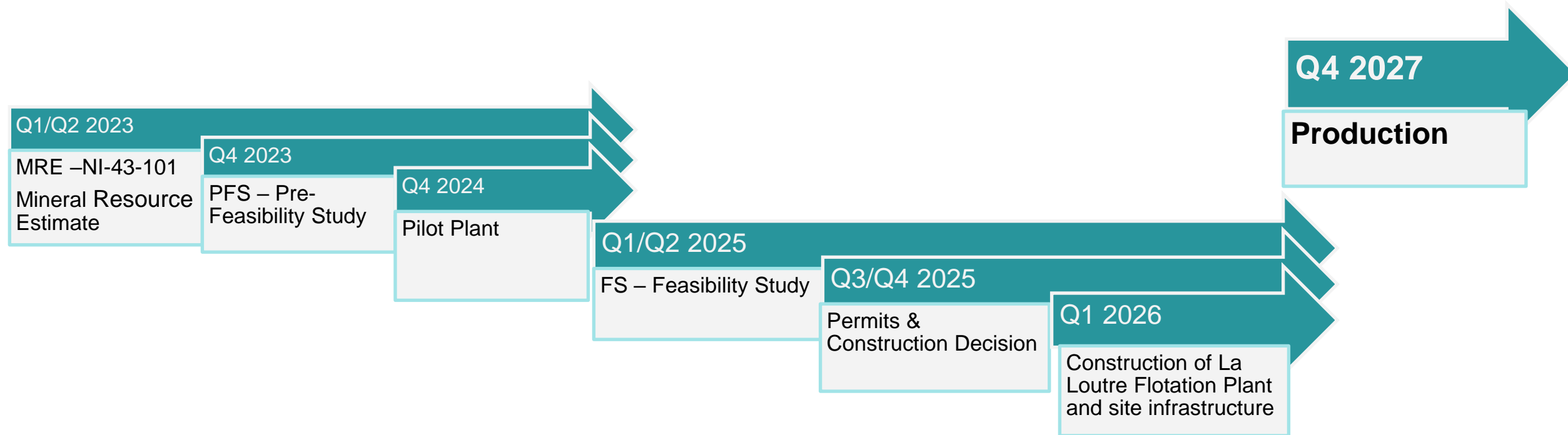
Expanded Graphite +80 & +50 mesh



La Loutre development timeline subject to financing



La Loutre Long Term Development Line



Development timeline is strictly dependent on the company's ability to finance the works

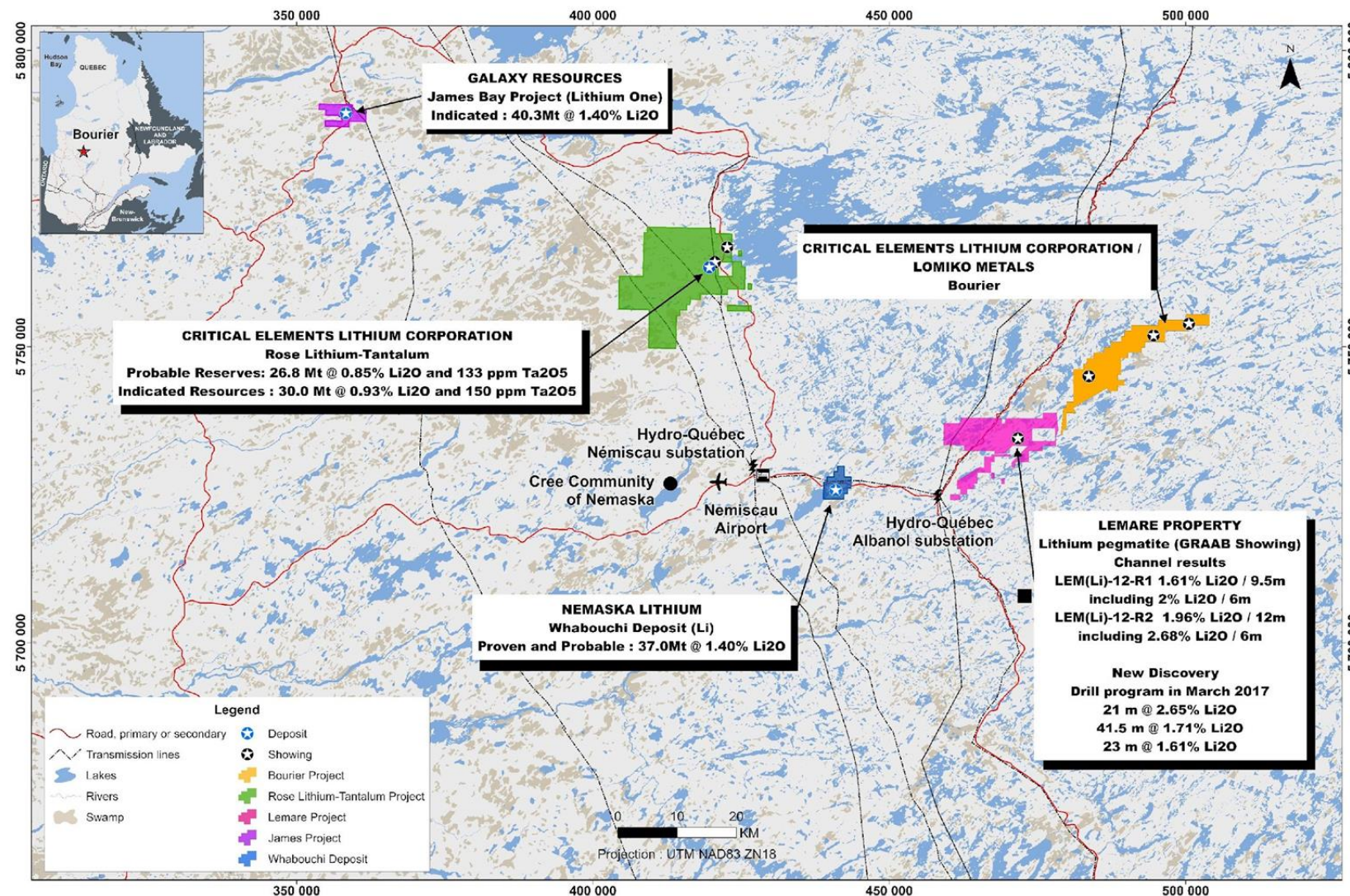
Bourier lithium project: highly prospective region

Bourier

Adjacent Properties:

- Galaxy Resources
- Nemaska Lithium
- Critical Elements

1. Rose Tantalum Project FS stage
2. Lemare Property:
3. March 2017 Drilling
21m @ 2.65% Li₂O
41.5m @ 1.71% Li₂O
23m @ 1.61% Li₂O

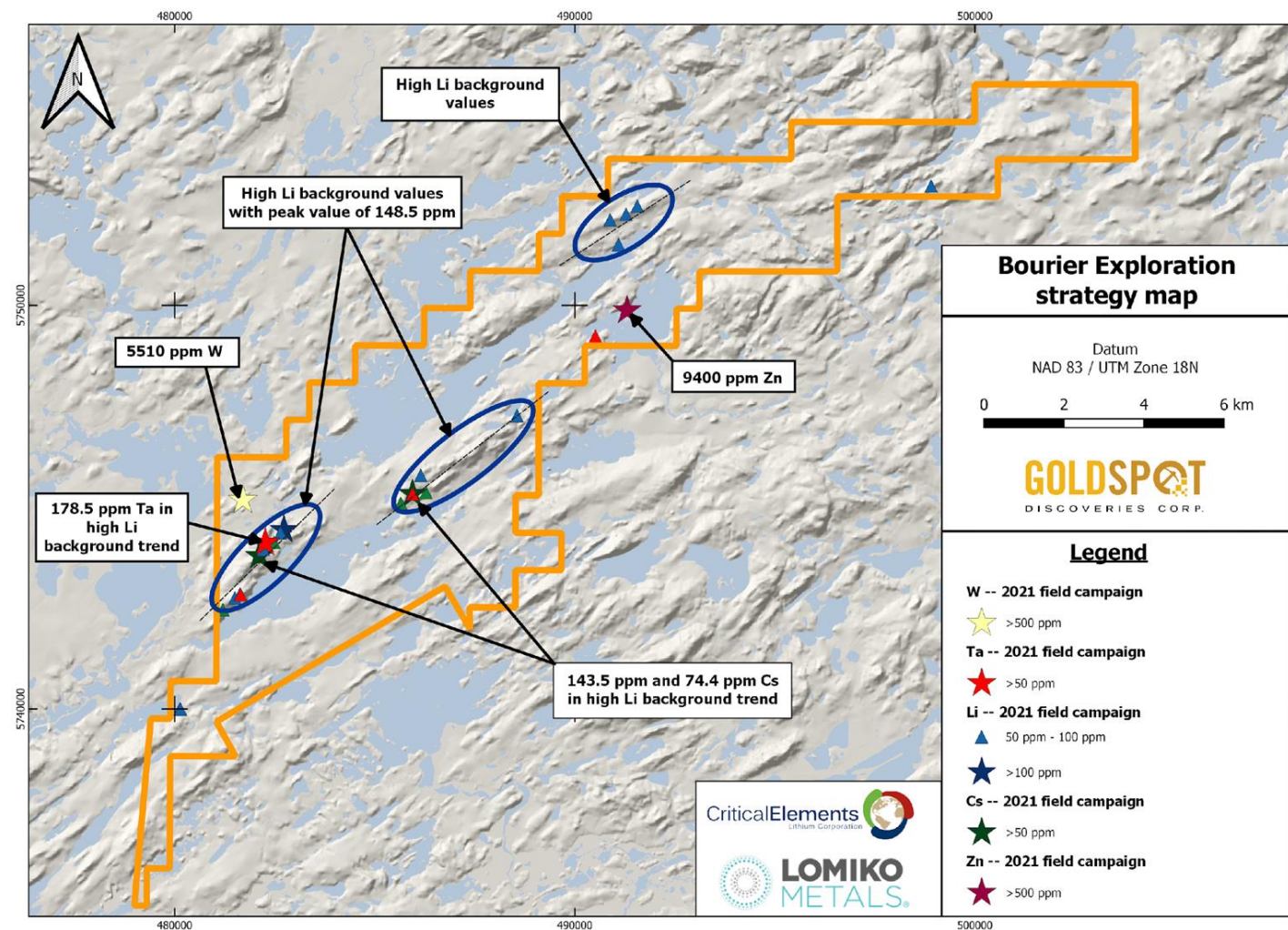


Bourier lithium project identifies exploration targets with Li anomalies

2021 Exploration Results

Bourier Exploration Program 2022

- Located on Nemiscau greenstone belt and Critical Elements south-east of the Cree Eeyou Istchee James Bay territory in Quebec.
- Summer:** intensifying prospection over anomalous zones, including strategic soil surveys
- Completed field program in July with Critical Elements and GoldSpot AI
- Collected over 1000 soil samples and over 400 rock samples, mapped over 350 outcrops



Corporate budget requirements for La Loutre

The regional exploration program and Bourier work is being funded with Canadian Flow-Through financing

COMPLETED

Phase 1 at La Loutre	Cost (\$M)
Resource Drilling	\$3.5
Metallurgy	\$0.6
Environmental	\$0.7
Total	\$4.8

PLANNED

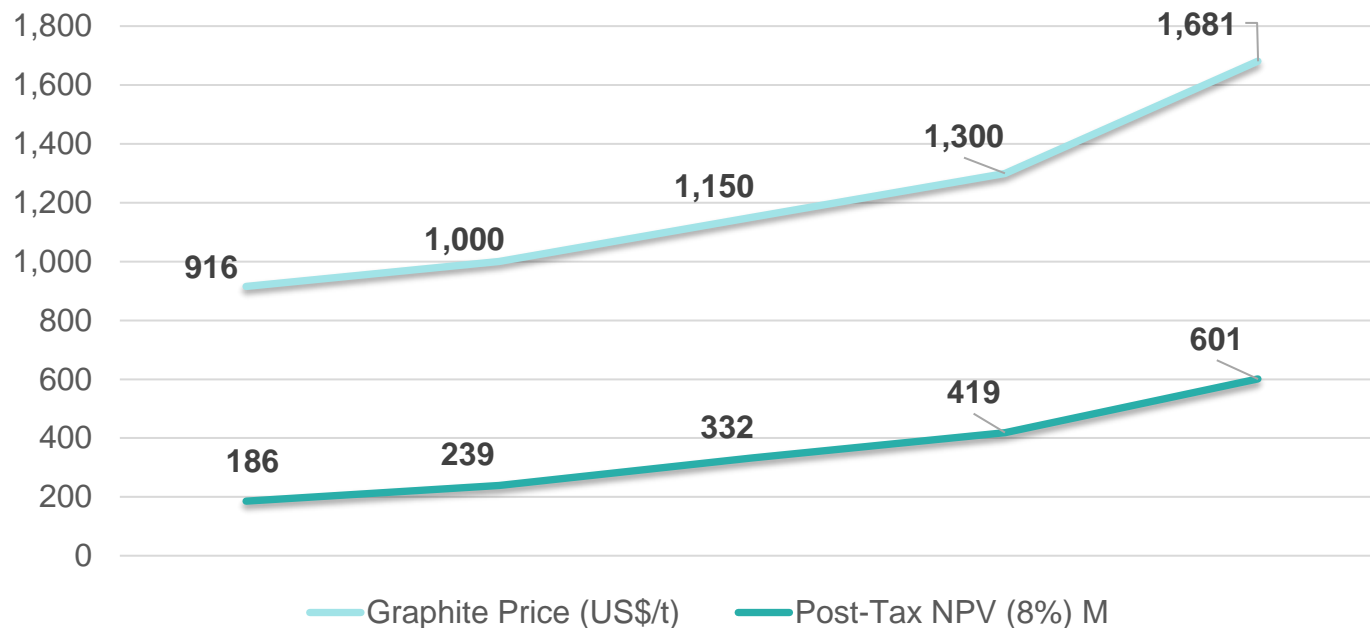
To PFS for La Loutre	Cost (\$M)
Mining Plan	\$0.3
Mining Geotechnical	\$0.9
Power and Access Road Study	\$0.2
Infrastructure Geotechnical & Waste Disposal Facility	\$0.7
Environmental, Hydrogeology & Geochemical	\$1.3
Pre-Feasibility Study Budget	\$1.4
Sum	\$4.8
Total + 15% Contingency	\$5.5

NPV scenario analysis:

Positively leveraged to expected graphite price increases

- PEA used a graphite concentrate selling price of US \$916/t.
- The current forecast selling price is US **\$1,000/t** of graphite concentrate (source: Benchmark).
- Current public information indicates a selling price of over US \$1,500/t

US\$/t Price sensitivity



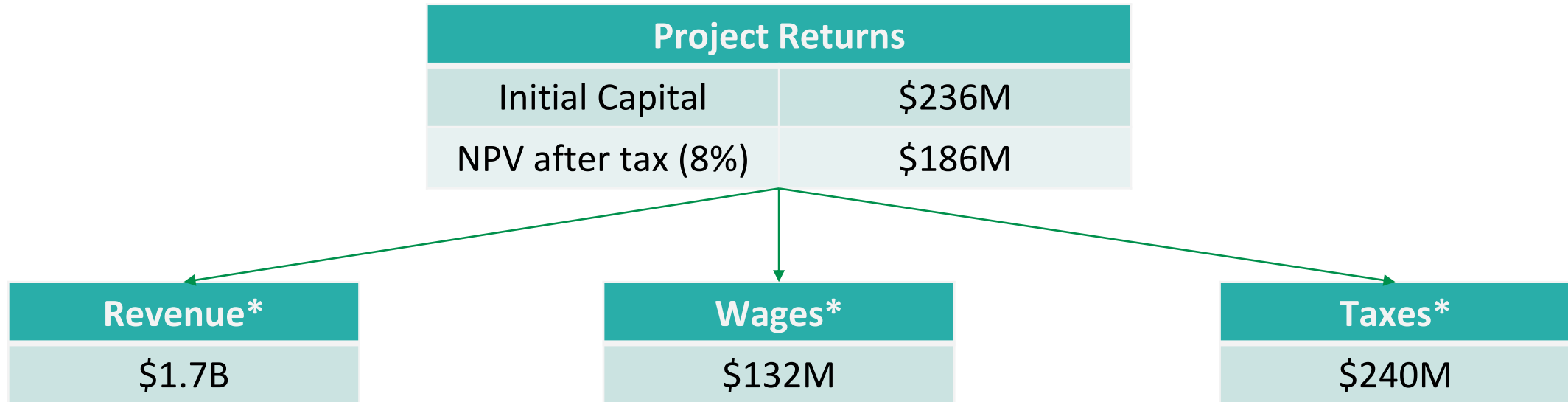
Graphite Price (US\$/t)	Post-Tax NPV (8%)	Post-Tax IRR %	Payback (yrs.)
\$916	\$186M	21.5%	4.2
\$1,000	\$239M	25.0%	3.7
\$1,150	\$332M	31.0%	3.1
\$1,300	\$419M	36.7%	2.6
*\$1,681	\$601M	48.7%	1.9

Source : NI 43-101 Technical Report and Preliminary Economic Assessment (July 2021) (\$916, \$1,150 & \$1,300)

* Peer Group (FS and Construction stage) Average Forecast Selling Price of Flake Graphite

Project Returns and Impacts

Over the life of the project, 15 years, there are significant cash flows into the local economy, provincial and federal government



2021 Census Statistics - surrounding Communities	
Avg. Population	655
Median Age	59.8 Years
Median Household Income	\$56,267

Comparable company analysis demonstrates value creation potential

Nov 29, 2022

Symbol	Price	Company Name	Shares O/S	Cash	TEV	Market Cap (\$M)	Measured (Mt)	Indicated (Mt)	Inferred (Mt)	EV/Resource (M&I)
TSXV:NOU	6.150	Nouveau Monde Graphite Inc	55.8	14.0	334.0	342.9	24.5	95.8	4.5	2.8
TSX:NEXT	2.530	NextSource Materials Inc	101.9	4.6	253.5	257.7	23.6	76.8	40.9	2.5
TSXV:GPH	1.170	Graphite One Inc	106.4	1.2	130.2	124.5	4.7	27.9	254.7	4.0
TSXV:SRG	0.650	SRG Mining Inc	113.8	13.6	60.4	74.0	2.1	17.0	2.8	3.2
TSXV:NGC	0.500	Northern Graphite Corp	121.0	4.7	71.0	60.5	9.0	92.6	35.9	0.7
TSXV:FMS	0.560	Focus Graphite Inc	55.8	3.6	30.0	31.2	0.4	68.4	18.0	0.4
TSXV:LEM	0.180	Leading Edge Materials Corp	152.5	1.7	25.8	27.5	1.0	9.8	2.5	2.4
TSXV:LLG	0.165	Mason Graphite Inc	141.2	7.3	16.0	23.3	19.0	46.5	17.6	0.2
TSXV:STS	0.570	South Star Battery Metals Corp	32.8	4.3	16.9	18.7	3.9	11.0	7.9	1.1
TSXV:CCB	0.075	Canada Carbon Inc	154.5	0.9	10.7	11.6		3.3	10.5	3.2
TSXV:LMR	0.035	Lomiko Metals Inc	287.4	3.8	6.3	10.1		23.1	46.8	0.3
TSXV:GEM	0.045	Green Battery Minerals Inc	69.3	1.4	1.7	3.1		1.8	1.5	1.0
Median					27.9	29.3				1.8
Median (Excl Lomiko)					30.0	31.2				2.4

Source: Yahoo Finance and Company data

Capital Structure

As at Nov 29, 2022

Shares Issued & Outstanding	287.4M
Options	13.0M
Warrants	82.6M
Share Units (PSU/RSU/DSU)	8.9M
Fully Diluted	392.0M
Management & Insider Ownership %	6.9%

Market Cap	\$10.1M
Cash*	\$3.8M
Debt	\$ -
Total Enterprise Value	\$6.3M

* Cash balance from audited financials – July 31, 2022

New Vision. New Strategy. New Energy.



Major new energy business and operator of choice: By putting people first

We are building a strategic stockpile of critical minerals assets in Quebec

Strong investment proposition and leading with vision and values

- \$5-7m needed to PFS
- Explore and develop surrounding regional claims and review consolidation opportunities
- Continue to engage with the community in good faith and with transparency
- Surface value on Bourier

Diverse leadership with solid experience building businesses

MANAGEMENT TEAM

Belinda Labatte, CEO, CFA, MBA, ICD.D

20 years experience in capital markets. Fluent in French. Served as Chief Dev. Officer for Mandalay Resources

Gordana Slepcev, COO, P.Eng., M.Sc.

Mining Engineer served as COO for BMSI/BarCan and Anaconda Mining

Vince Osbourne, CFO, CMA, CBV

Senior finance professional with Sobey's
Over 19 years experience in finance

Mike Petrina, VP Projects, P.Eng

Mr. Petrina is a mining engineer that has held executive roles with Adanac Molybdenum, Hawthorne Gold, MAG Silver and Probe Minerals

BOARD OF DIRECTORS

A. Paul Gill, Executive Chair

CEO of Pampa Metals, Lomiko Technologies, and a Director of Pampa metals, Graphene ESD and Altair Ventures

Sagiv Shiv, Chair of Audit Committee ^{1,3}

Managing Director at B. Riley Securities based in New York City. Led the global M&A and Advisory Practice at INTL FCStone Inc. and at Merriman Capital

Eric Levy, Chair of Corporate Compensation, Governance and Nominating Committee ³

Head of Osler's Montreal Corporate Group and Chair of the Gaming Group and sits on the Osler Partnership Board. Specializes in cross-border M&A and securities law

Belinda Labatte CEO and Director ¹

Dominique Dionne, Independent Director ^{2,3}

Chairs the board of directors of Public Relations Without Borders. Held the position of Vice President, Public Affairs and Strategic Communications at PSP Investments.

Lee Arden Lewis, Independent Director ²

Status member of the Mohawks of the Bay of Quinte Tyendinaga Mohawk Territory. Working with the Assembly of First Nations (AFN) and the Aboriginal Traditional Knowledge Groups

STRATEGIC ADVISORS

Normand Champigny, CEO and Director Quebec Precious Metals

Geological engineer with extensive experience with both public and private companies, both domestically and internationally. Currently a director of Bonterra Resources

Anne Chabot, Special Advisor to the Board and Management

Strategic advisor to management on our work with First Nations engagement, supported by Lee Arden Lewis as Independent Director of the Board. 25 years of experience working with Indigenous and non-Indigenous governments, agencies and community groups

¹ *Member of Audit Committee*

² *Member of Environment, Social and Governance Committee*

³ *Member of Corporate Compensation, Governance and Nominating Committee*