

LOMIKO
METALS®

Developing a pipeline of
critical mineral properties in
Quebec for a North
American
climate success story

TSXV: LMR
OTC: LMRMF
Frankfurt: DH8C

August 2022



DISCLAIMER

This presentation is not a prospectus, offering memorandum or an advertisement and is being provided for information purposes only and does not constitute or form part of, and should not be construed as, an offer or invitation to sell or any solicitation of any offer to purchase or subscribe for any securities of Lomiko Metals Inc. (the “**Corporation**”) in Canada, the United States or any other jurisdiction. Neither this presentation, nor any part of it, nor anything contained or referred to in it, nor the fact of its distribution, should form the basis of or be relied on in connection with or act as an inducement in relation to a decision to purchase or subscribe for or enter into any contract or make any other commitment whatsoever in relation to any securities of the Corporation.

This presentation contains "forward-looking information" within the meaning of the applicable Canadian securities legislation that is based on expectations, estimates, projections and interpretations as at the date of this presentation. The information in this presentation about the Corporation; and any other information herein that is not a historical fact may be "forward-looking information" (“**FLI**”). All statements, other than statements of historical fact, are FLI and can be identified by the use of statements that include words such as "anticipates", "plans", "continues", "estimates", "expects", "may", "will", "projects", "predicts", “proposes”, "potential", "target", "implement", “scheduled”, "intends", "could", "might", "should", "believe" and similar words or expressions. FLI in this presentation includes, but is not limited to: the Corporation’s objective to become a responsible supplier of critical minerals, exploration of the Corporation’s projects, including expected costs of exploration and timing to achieve certain milestones, including timing for completion of exploration programs; the Corporation’s ability to successfully fund, or remain fully funded for the implementation of its business strategy and for exploration of any of its projects (including from the capital markets); any anticipated impacts of COVID-19 on the Corporation’s business objectives or projects, the Corporation’s financial position or operations, and the expected timing of announcements in this regard. FLI involves known and unknown risks, assumptions and other factors that may cause actual results or performance to differ materially. This FLI reflects the Corporation’s current views about future events, and while considered reasonable by the Corporation at this time, are inherently subject to significant uncertainties and contingencies. Accordingly, there can be no certainty that they will accurately reflect actual results. Assumptions upon which such FLI is based include, without limitation: current market for critical minerals; current technological trends; the business relationship between the Corporation and its business partners; ability to implement its business strategy and to fund, explore, advance and develop each of its projects, including results therefrom and timing thereof; the ability to operate in a safe and effective manner; uncertainties related to receiving and maintaining exploration, environmental and other permits or approvals in Quebec; any unforeseen impacts of COVID-19; impact of increasing competition in the mineral exploration business, including the Corporation’s competitive position in the industry; general economic conditions, including in relation to currency controls and interest rate fluctuations.

The Corporation’s actual results, programs and financial position could differ materially from those anticipated in such FLI as a result of numerous factors, risks and uncertainties, many of which are beyond the Corporation’s control. These include, but are not limited to: the market for critical minerals; the evolution of supply and demand for critical minerals; the Corporation’s projects may not be explored or developed as planned; uncertainty relating to possible cost-overruns in implementing its business strategy and developing its projects; market prices affecting development of the projects; the availability and ability to secure adequate financing and on favourable terms; inability to obtain required governmental permits; any limitations on operations imposed by governments in the jurisdictions where we operate; technology risk; inability to achieve and manage expected growth; political risk associated with foreign operations; changes in government regulations, including currency controls; changes in environmental requirements; failure to obtain or maintain necessary licenses, permits or approvals; risks associated with COVID-19; insurance risk; litigation risk; receipt and security of mineral property titles and mineral tenure risk; changes in project parameters; uncertainties associated with estimating mineral resources and mineral reserves in the future, including uncertainties regarding assumptions underlying such estimates; whether mineral resources (if any) will ever be converted into mineral reserves; opposition to exploration and/or development of the projects; surface access risk; geological, technical, drilling or processing problems; health and safety risks; unanticipated results; unpredictable weather; unanticipated delays; reduction in demand for minerals; intellectual property risks; dependency on key personnel; workforce and equipment availability; currency and interest rate fluctuations; and volatility in general market and industry conditions.

This Presentation has not been independently verified and the information contained within may be subject to updating, revision, verification and further amendment. Except as otherwise provided for herein, neither the Corporation, nor its directors, officers, shareholders, agents, employees or advisors give, has given or has authority to give, any representations or warranties (express or implied) as to, or in relation to, the accuracy, currency, reliability or completeness of the information or opinions in this Presentation, or any revision thereof, or of any other written or oral information made or to be made available to any interested party or its advisers and liability therefore is expressly disclaimed for any loss howsoever arising, directly or indirectly, from any use of such information or opinions or otherwise arising in connection therewith.

Except as may be required by applicable law, in furnishing this presentation, the Corporation does not undertake or agree to any obligation to provide the recipient with access to any additional information or to update this presentation or to correct any inaccuracies or omissions. Information contained in this presentation is the property of the Corporation and it is made available strictly for the purposes referred to above.

Land Acknowledgement

We would like to begin by acknowledging that the land/projects where we operate are located within the traditional land of the Algonquin Anishnaabeg and Cree Eeyou Istchee Peoples.

Our vision is to embrace Indigenous people and Indigenous values within our projects in order to develop a sustainable approach on our path to critical minerals while honouring the lives, memories, and hopes of all seven generations close.

The La Loutre graphite project site is located within the Kitigan Zibi Anishinabeg (KZA) First Nations territory. The KZA First Nations are part of the Algonquin Nation and the KZA territory is situated within the Outaouais and Laurentides regions.

The Bourier lithium project site is located south-east of the Eeyou Istchee James Bay territory in Quebec near Nemaska Lithium and Critical Elements.

Lomiko purpose: The operator of choice in Quebec

By putting people first



We are building a strategic stockpile of critical minerals assets in Quebec

- ✓ 3mt tons of in situ graphite at 100% owned La Loutre project which can meet 30% of flake graphite demand in Quebec in 5 years
- ✓ PEA stage project with drill program underway
- ✓ Exceptional scalability potential with regional graphite exploration program
- ✓ Upside from lithium early exploration

Strong investment proposition and leading with vision and values

- ✓ 1 of 17 ECOLOGO-certified mining companies in Quebec
- ✓ Most diverse management and governance team in Canada
- ✓ Operating in the best jurisdiction for the new EV supply chain: Quebec
- ✓ Most prospective resource in the Quebec Grenville graphite belt

Lomiko Metals catalysts

For a long-term solution to our EV industry

La Loutre PEA stage moving towards PFS Graphite

- Completing infill and extension diamond drill program
- Finished initial purification studies and undertaking PFS level Met testing
- Environmental baseline studies underway
- Updated resource estimate in early 2023

Early-Stage Grenville properties Graphite

- Acquired 6 new prospective graphite projects
- Potentially feed centralized processing facility
- Grenville Province- graphite metamorphic belt
- Time-domain electromagnetic (TDEM) and magnetic (MAG) surveys underway

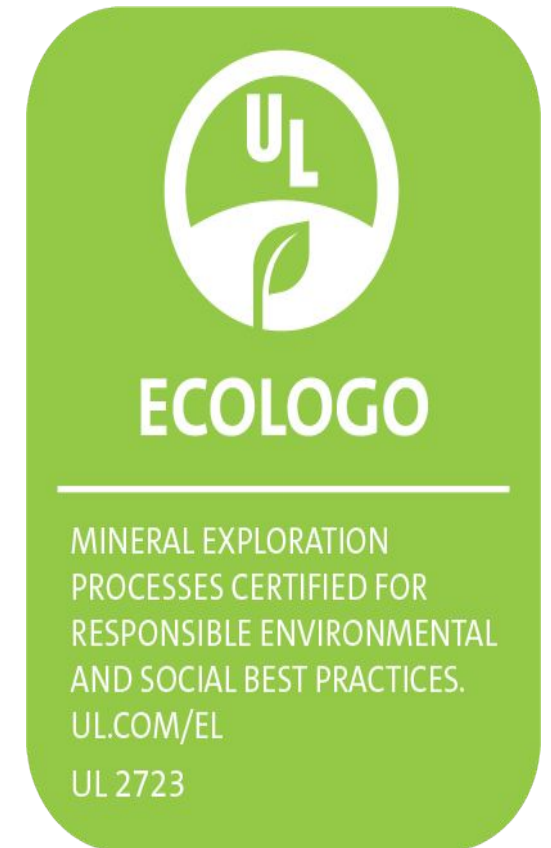
Bourier Early-Stage Lithium

- Surface and airborne program starts July
- Follow up on 15 targets
- Identified 2.5 km long anomalous zone
- Generating drill targets to earn in to first option of 49% equity interest

Why investing in Quebec is the right choice

Quebec critical minerals and Lomiko can generate premium pricing

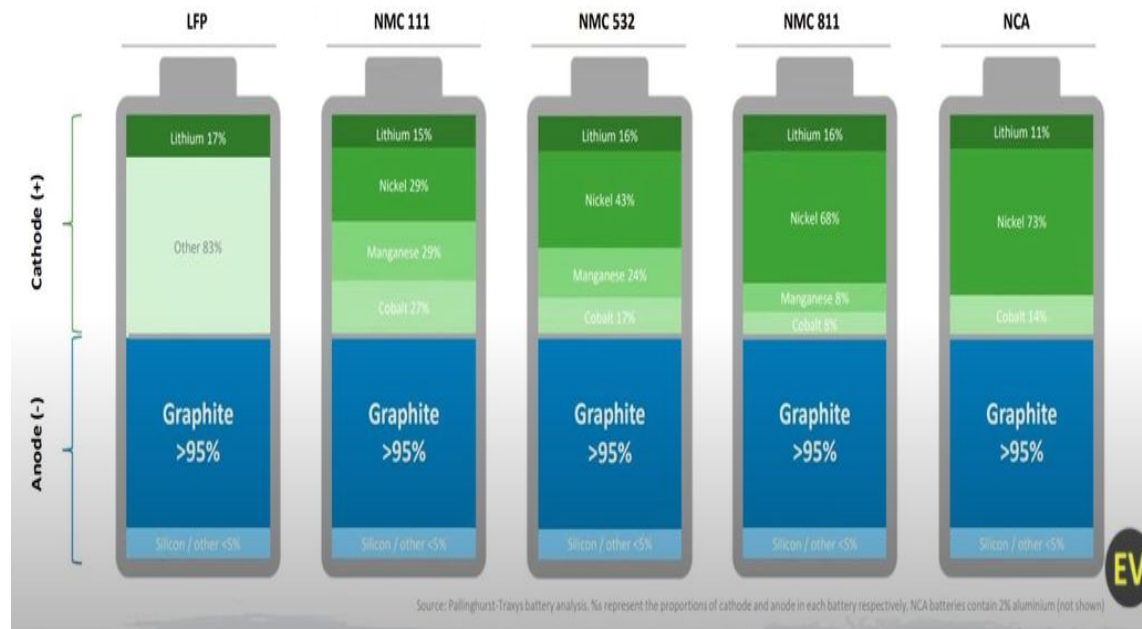
- The Quebec Mineral Exploration Association (“QMEA”) ECOLOGO recognizes and promotes environmental, social and economic best practices: the first certification of its kind for mineral exploration companies
- Lomiko is one of 17 mineral exploration/service provider companies certified by UL
- Quebec supplies clean, green hydropower energy
- The most concentrated supply of natural flake graphite projects is found in the Grenville Province, located in Quebec and Lomiko’s La Loutre project is at the center
- Many Quebec funds and organizations support the growth of the entire EV supply chain and want to do business with Quebec



Natural flake graphite is the most important component in all EV batteries on the market today

- 95% of the anode is made of graphite and it is the heaviest mineral in the EV battery making it costly and unsustainable to import into North America
- Lomiko is developing the strategic stockpile of choice in Quebec of this critical mineral

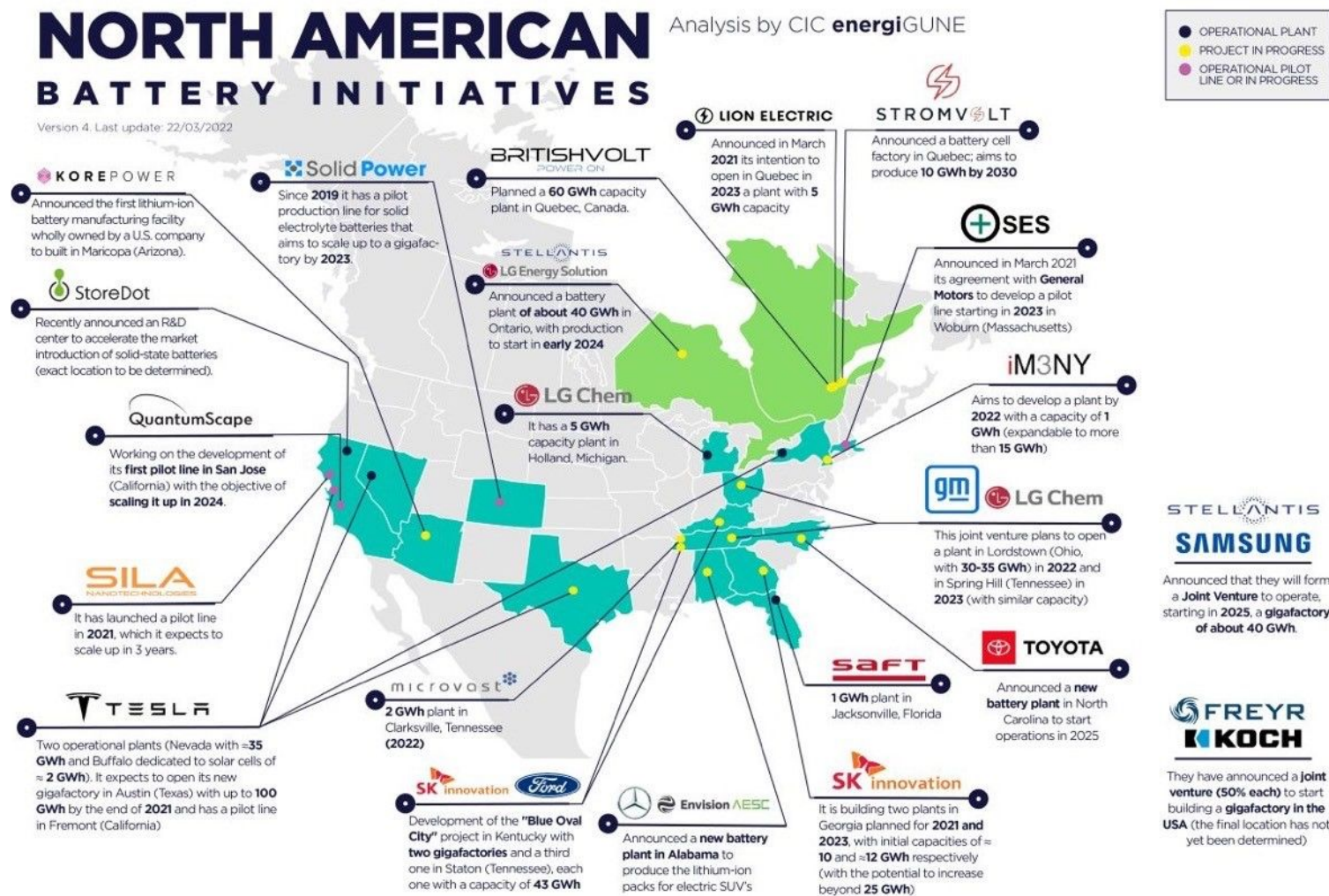
» **GRAPHITE** is the dominant material across all commercial battery technologies



Source: Science Direct

The challenge is lack of supply in North America

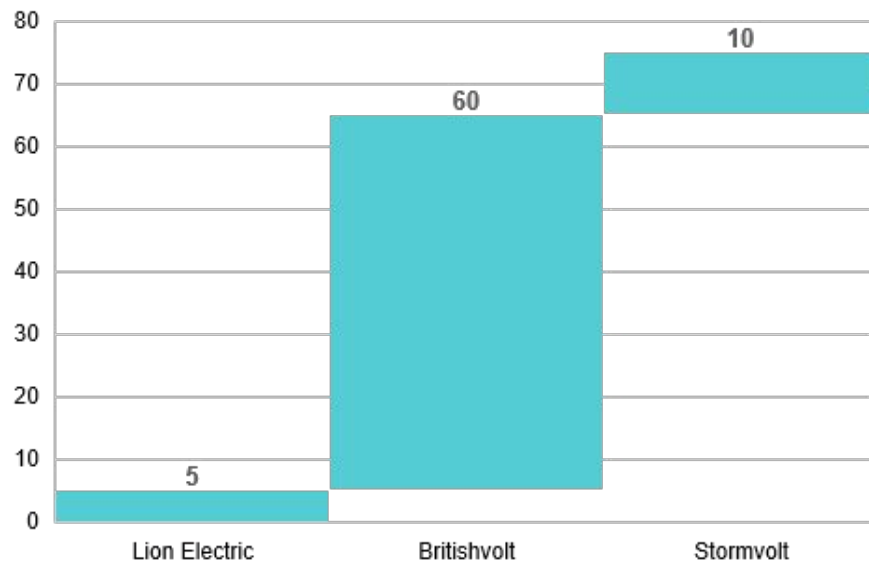
- Current capacity at 769 GWh
- There is demand for 800,000 of SPG (“Spherical Graphite”) per year, or 1.6Mt pa of graphite concentrate per year
- **Opportunity - Lomiko can provide 10% of this demand and 30% of demand in Quebec (according to its PEA) from its La Loutre property**



Source: Benchmark and North American Battery Initiatives

1.5m of EVs in Quebec requires 300,000tpa of graphite concentrate

**Quebec Battery Facilities
commitments (GWh)**



1.5m EVs in Quebec by 2030 means 150 GWh of capacity needed for batteries per Annum

- Spherical Graphite requirement for 150GWh battery capacity is 150,000tpa
- Graphite Concentrate 95% Cg requirement for 150GWh capacity is 300,000tpa
- **Potential to achieve 30% of market share and more with Lomiko La Loutre graphite**

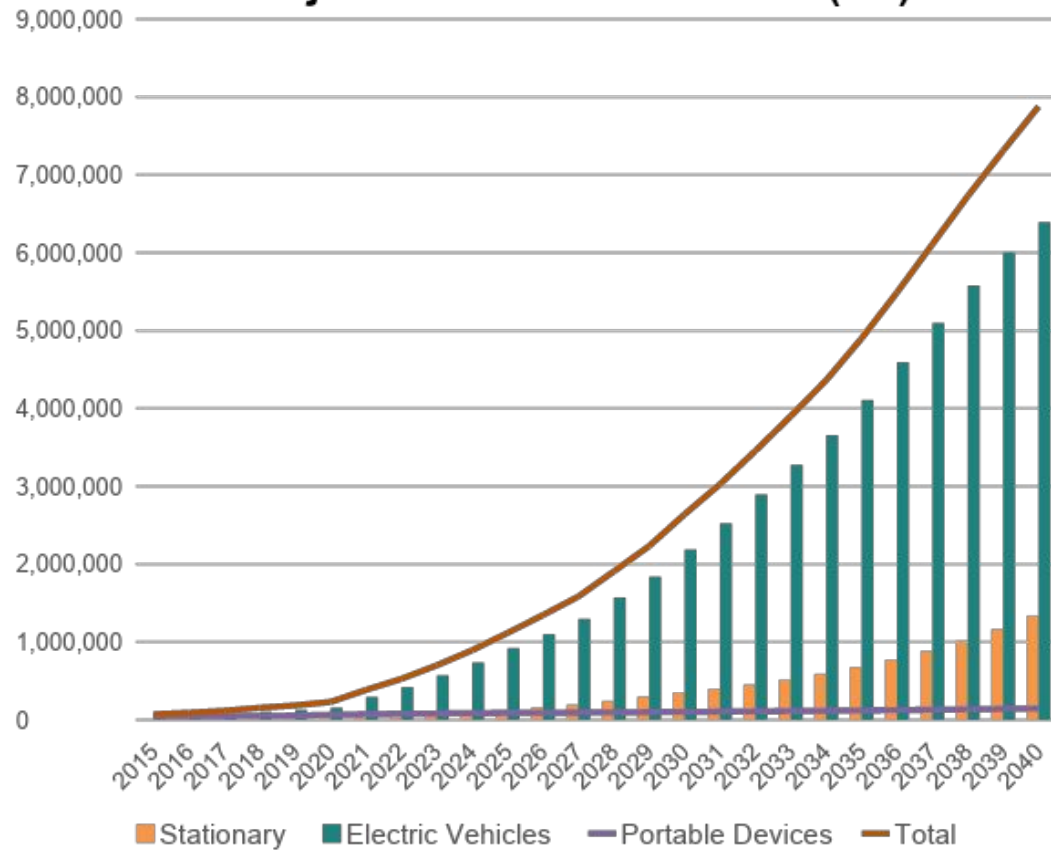
The current commitment by Lion Electric, Britishvolt and Stormvolt of 75GWh is 50% short of the required capacity

Importing a 400 to 600kg battery from China is not sustainable

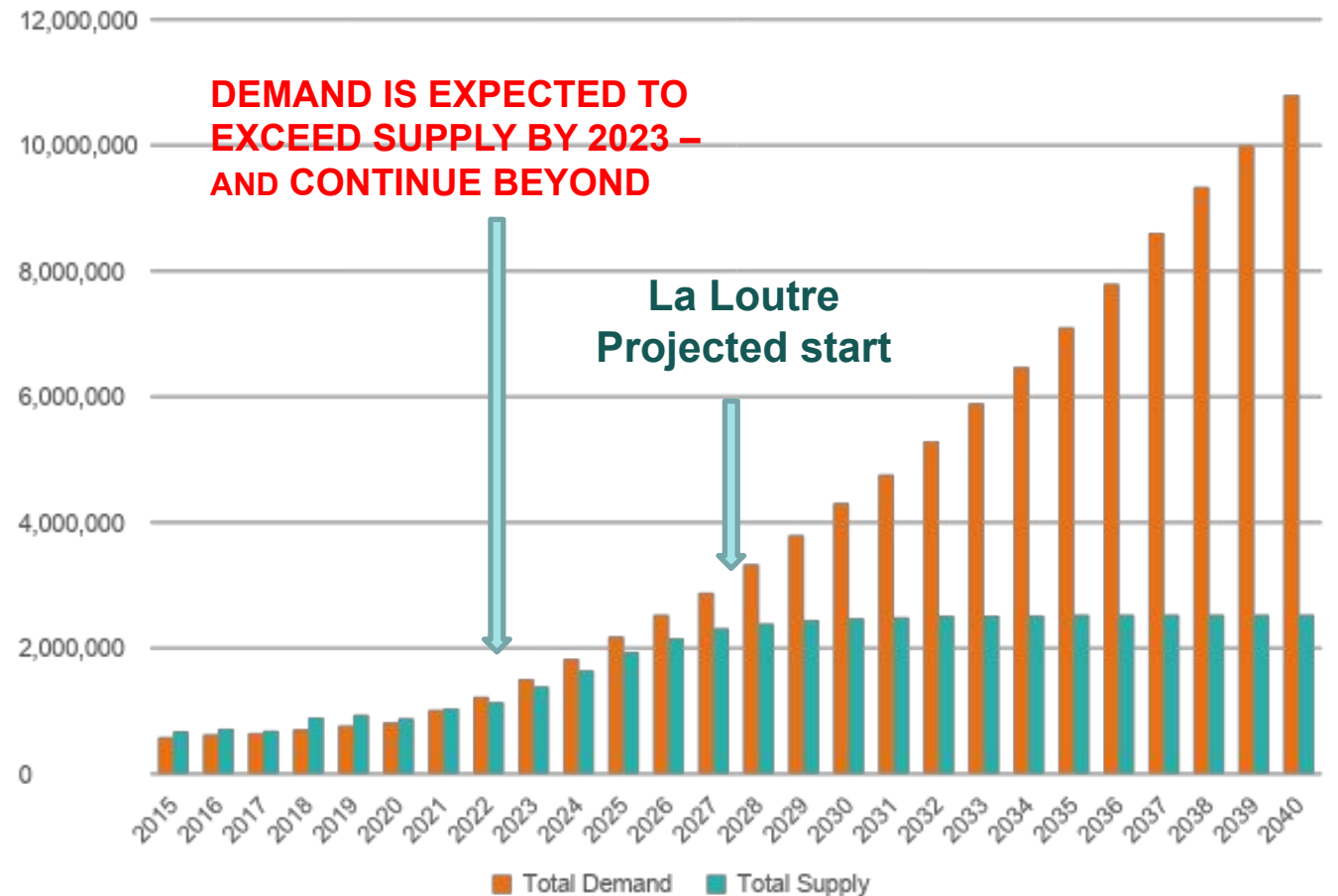
Graphite shortfall starting in 2027

Shortfall to increase to 8Mt by 2040

Projected Anode Demand (Mt)



Graphite Market Balance - Projected Demand and Supply (Mt)



MINÉRAUX CRITIQUES ET STRATÉGIQUES AU QUÉBEC

Version du 13 février 2020

New Staking Areas

Graphite

Plusieurs projets de graphite sont en activité.

- 1 Lac-des-Îles**
Imerys Graphite et Carbon Canada
Mine active
- 2 Lac Guéret**
Mason Graphite
Mise en valeur
- 3 Matawinie**
Nouveau Monde Graphite
Mise en valeur
- A Lac Knife**
Focus Graphite inc.
Gîte
- B La Loutre**
Corporation Métaux Précieux du Québec
Gîte
- C Miller**
Canada Carbon
Gîte
- D Bell Graphite**
Saint Jean Carbon
Gîte
- E Mousseau West**
Gîte

Cobalt et éléments du groupe du platine

Deux mines exploitent le cobalt et les éléments du groupe du platine en sous-produits du nickel.

- 4 Raglan**
Glencore Canada Corporation
Mine active
- 5 Nunavik Nickel**
Canadian Royalties inc.
Mine active
- 6 Dumont Nickel**
Magneto Investments Limited Partnership
Mise en valeur
- F Bravo**
Exploration minière Jien Nunavik Ltée
Gîte
- G Hawk Ridge**
Nickel North Exploration Corp.
Gîte
- H Lac Menarik**
Harfang Exploration inc.
Gîte
- I Lac Rocher**
Victory Nickel inc.
Gîte
- J Nisk-1**
Corporation Éléments Critiques
Gîte

Niobium

Le Québec est le deuxième producteur mondial de niobium et le seul de l'hémisphère nord.

- 7 Niobec**
Niobec
Mine active
- K Crevier**
Les Minéraux Crevier inc.
Gîte

Titane et vanadium

Le Québec est le premier producteur de titane sous forme d'ilménite au monde.

- 8 Lac Tio**
Rio Tinto Fer et Titane
Mine active
- 9 BlackRock**
Métaux Black Rock inc.
Mise en valeur
- L Vanadium-Lac Doré**
Vanadiumcorp Resource inc.
Gîte
- M Magpie**
The Magpie Mines Inc.
Gîte
- N Iron-T**
Vanadium Corp.
Gîte
- O Mont Sorcier Iron**
Vanadium One Iron Corp.
Gîte

Lithium

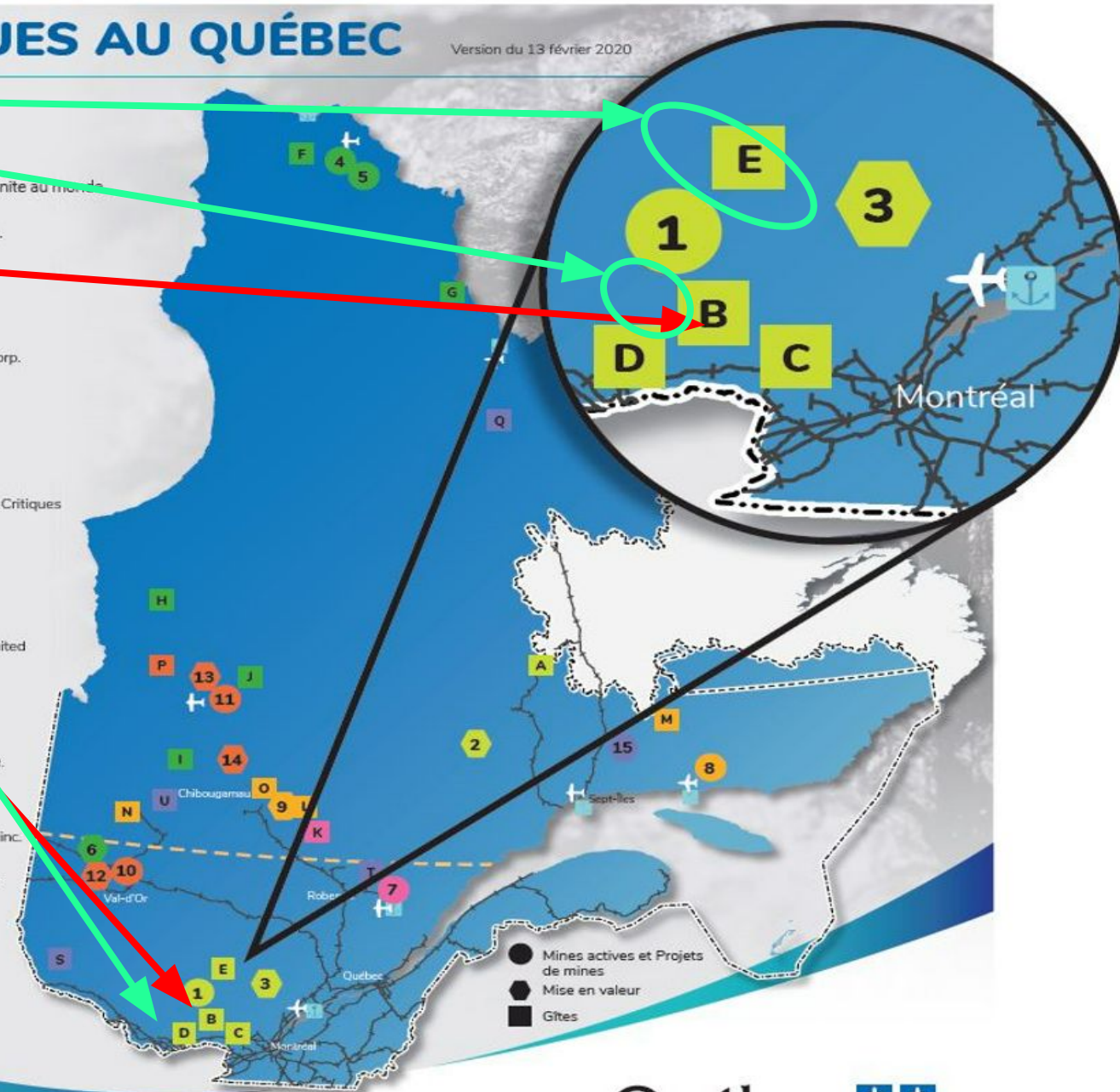
Le Québec détient un potentiel élevé en lithium.

- 10 Lithium Amérique du Nord**
Lithium Amérique du Nord
Mine en maintenance
- 11 Whabouchi**
Nemaska Lithium
Construction et rodage
- 12 Authier**
Sayona Québec
Mise en valeur
- 13 Rose**
Corporation Éléments Critiques
Mise en valeur
- 14 Moblan**
Lithium Guo Ao Ltée et SOQUEM inc.
Mise en valeur
- P James Bay**
Galaxy Resources Limited
Gîte

Éléments des terres rares

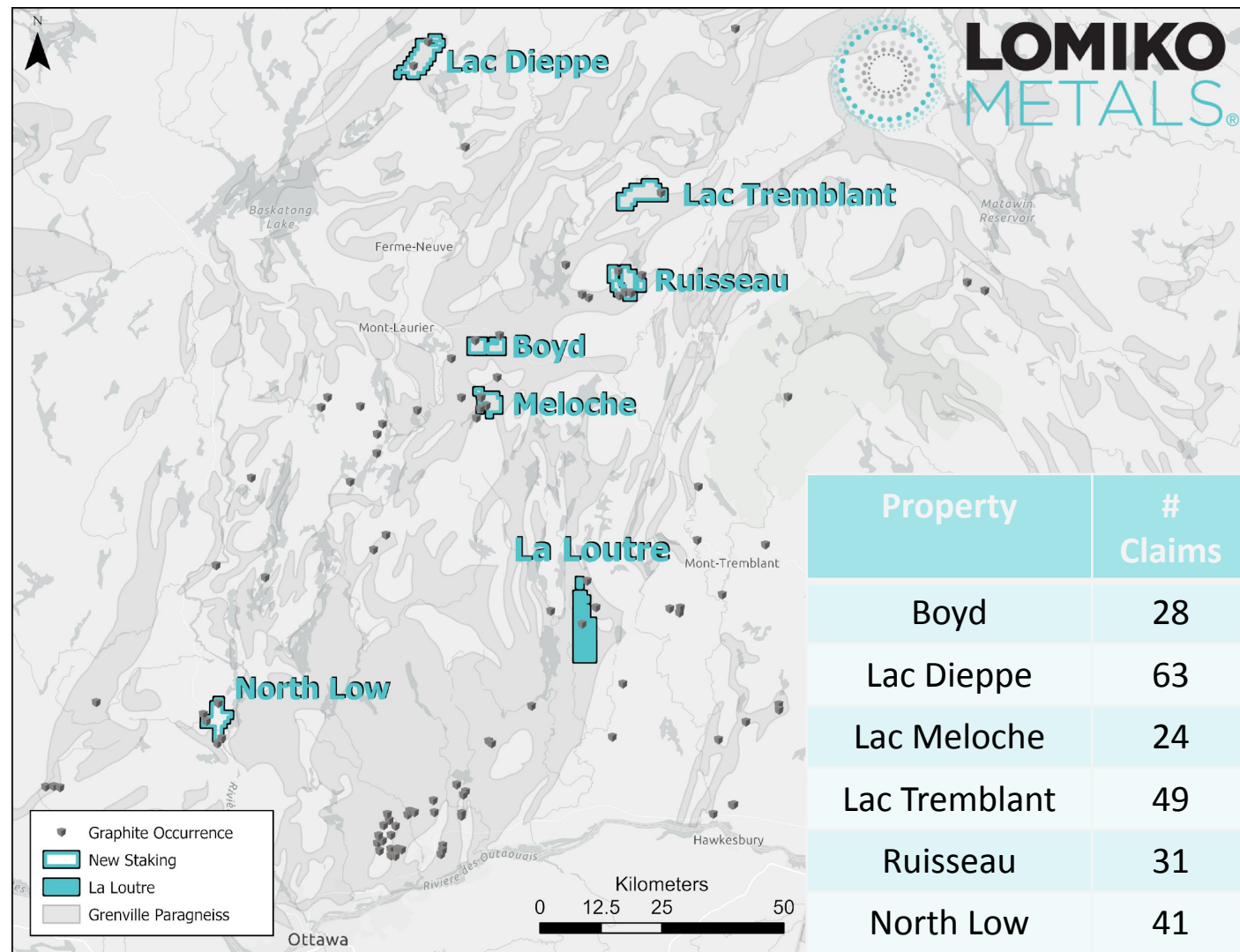
Le Québec renferme plusieurs dépôts de terres rares et il est reconnu comme ayant un potentiel à l'échelle mondiale.

- 15 Kwijibo**
SOQUEM
Mise en valeur
- Q Eldor (Ashram)**
Commerce Resources Corporation
Gîte
- R Strange Lake - Zone B**
Métaux Torngat Ltée
Gîte
- S Kipawa (Zeus)**
Corporation Métaux Précieux du Québec et Ressources Québec inc.
Gîte
- T Niobec - REE Zone**
Niobec inc.
Gîte
- U Carbonatite de Montviel**
Ressources Géoméga inc.
Gîte



Lomiko new natural flake graphite claims: 14,255 hectares of mineral claims

- 236 claims in total, on 6 projects in the Laurentian region of Quebec and within KZA territory
- Within a 100 km radius of the Company's flagship La Loutre graphite project
- Large disseminated flake graphite mineralization deposits occur at a number of places in the Grenville Province metamorphic belt
- To be funded with flow-through financing
- The magnetic (MAG) and time-domain electromagnetic (TDEM) survey will be flown via helicopter later in July and August. The Company aims to identify near-surface conductors which will help guide the fieldwork in the future



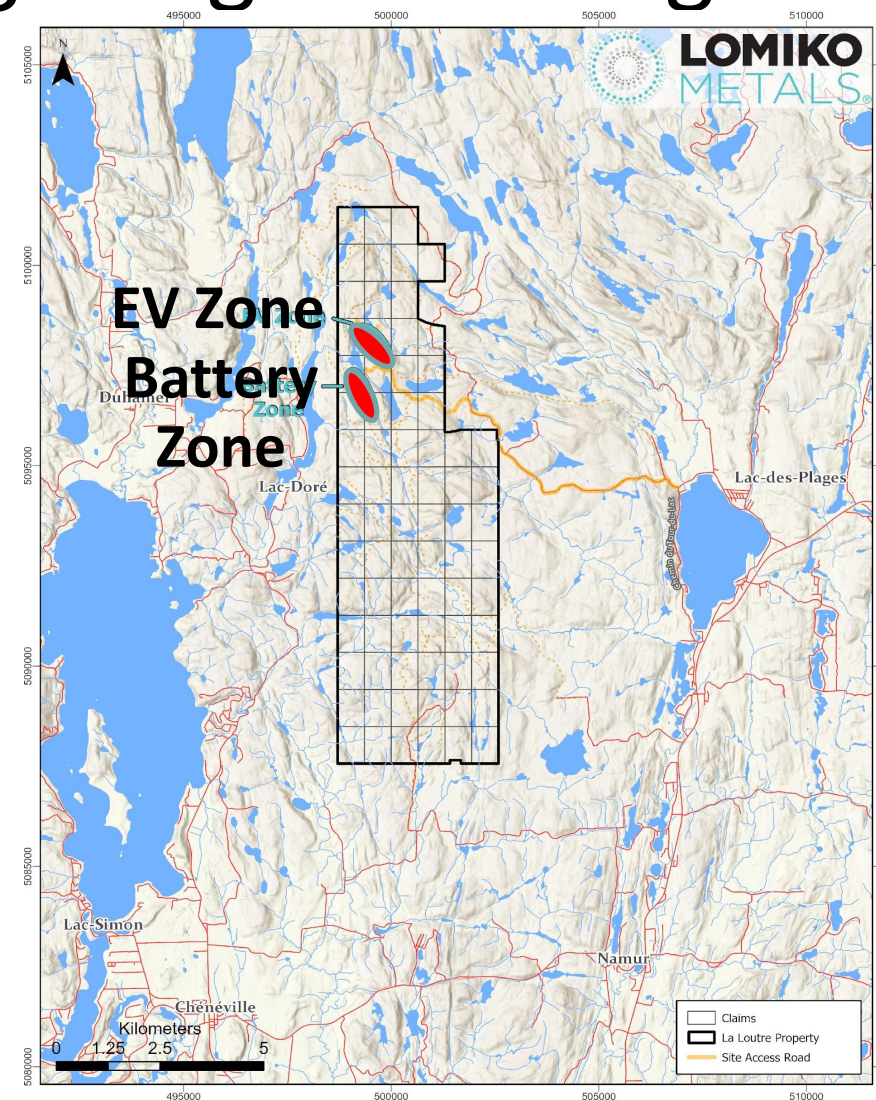
La Loutre graphite project close to infrastructure with great geological setting

La Loutre

- Stage of development: Preliminary Economic Assessment ("PEA")
- Starting Preliminary Feasibility Study
- Initiated infill-drill program
- Initiated metallurgical studies
- Initiated baseline studies
- Concession size: 4,528 ha
- Location: Quebec, Papineau - 192 km Highway to Port of Montreal – access to power, infrastructure & talent

Graphite expected to have 37% deficit in supply by 2030

(source: UBS report 2021)



Source: Company Data

La Loutre Resource Estimate: focus on conversion

La Loutre Resource Estimate (Effective Date: May 14, 2021) - PEA

Class	Cut-off	EV Deposit		Battery Deposit		Total		
	(%)	Run-of-Mine	In-Situ Grade	Run-of-Mine	In-Situ Grade	Run-of-Mine	In-Situ Grade	Graphite (kt)
		Tonnage (kt)	Graphite (%)	Tonnage (kt)	Graphite (%)	Tonnage (kt)	Graphite (%)	
Indicated	1	8,321	6.38	15,889	3.32	24,210	4.37	1,057.90
	1.5	8,158	6.48	15,007	3.44	23,165	4.51	1,044.30
	2	7,792	6.7	12,622	3.75	20,414	4.88	995.5
	3	6,768	7.33	4,529	6.16	11,297	6.86	774.6
	5	4,443	9.17	2,394	8.27	6,837	8.85	605.4
Inferred	1	13,114	5.71	38,273	3.1	51,387	3.77	1,936.40
	1.5	12,829	5.81	33,992	3.33	46,821	4.01	1,877.90
	2	12,273	5.99	27,775	3.69	40,048	4.39	1,759.50
	3	9,645	6.92	10,311	5.92	19,956	6.4	1,277.60
	5	5,833	8.99	5,687	7.58	11,520	8.29	955.2

Source: NI 43-101 Technical Report and Preliminary Economic Assessment (July 2021)

Notes:

- Resources are reported using the 2014 CIM Definition Standards and were estimated using the 2019 CIM Best Practices Guidelines.
- Mineral resources that are not mineral reserves do not have demonstrated economic viability. This report was prepared as National Instrument 43-101 Technical Report for Lomiko Metals Inc. by Ausenco Engineering Canada Inc., Hemmera Envirochem Inc., Moose Mountain Technical Services, and Metpro Management Inc., collectively the Report Authors.
- The mineral resource has been confined by a pit that reflects “reasonable prospects of eventual economic extraction” using the following assumptions: exchange rate CAD:USD=1.33; weighted average price of graphite of US\$890/t; 100% payable; off-site costs including transportation and insurance of C\$39.42/t; a 1.0% NSR royalty; and metallurgical recoveries of 95%.
- Pit slope angles are 45° below overburden, 20° in overburden.
- The specific gravity of the deposit is 2.86 in unmineralized and low-grade zones and 2.78 in high-grade zones (within solids above a 4% graphite grade).

La Loutre: PEA establishes a critical path ahead for improvements and project de-risking

- **Resources:** Ind 23.2 Mt @ 4.51% Cg for 1 Mt of graphite and inf 46.8 Mt @ 4.01% Cg for 1.9 Mt of graphite using cut-off grade of 1.5% Cg.
- PEA - LOM plant production of 21,8 Mtonnes of mill feed at 6.78% Cg diluted.
- **Graphite concentrate production at 1.43 Mtonnes grading 95.0% Cg.**
- 14.7-year mine life producing 100,000tpy of graphite at the product grade of 95.5% Cg
- Capex of C \$236M, AISC US \$ 406/t Cg cost
- 100% owned, 1.5% NSR
- Open circuit variability flotation tests produced **concentrate grades between 97.6% and 98.6% Cg.**

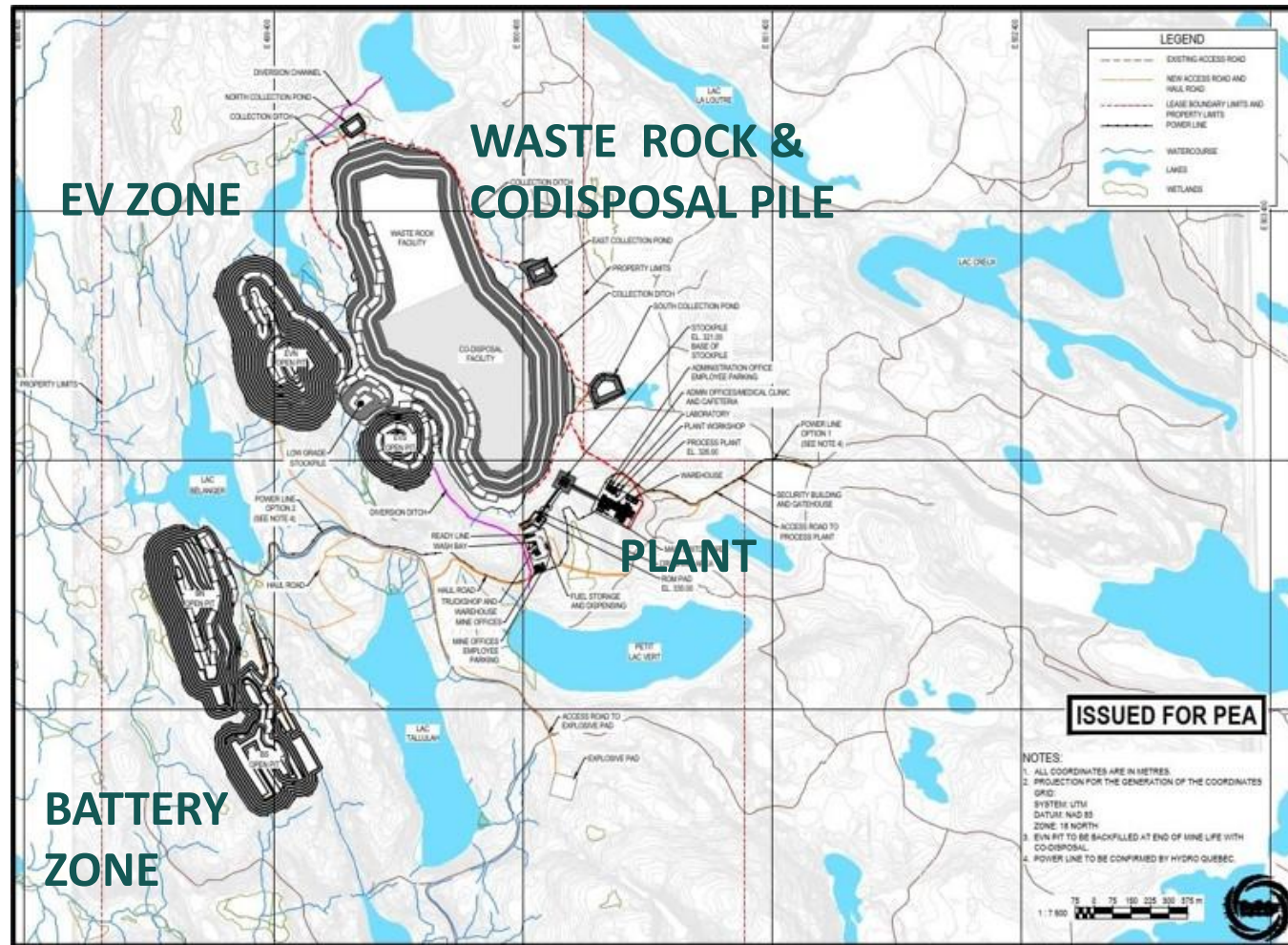


Source: NI 43-101 Technical Report and Preliminary Economic Assessment (July 2021)

La Loutre: PEA Layout – great base to build on

No conventional tailings facilities

- Waste rock and tailings co-disposed
- Efficient site water management
- Pits sequenced to maximize the returns starting from North – EV Pits to South – Battery Pits
- Stockpiles (low grade and ROM) for blending and Flotation Plant
- Mine - truck & shovel operation
- Flotation Plant 4,000tpd



Source: NI 43-101 Technical Report and Preliminary Economic Assessment (July 2021)

Early achievements from the new Lomiko team - 2022

ESG and business purpose

- ✓ Community engagement sessions held and retained a strategic advisor to work with Kitigan Zibi community
- ✓ Completed 11 months of the baseline studies
- ✓ Ecologo – completed the certification process
- ✓ Long-term working relationships with Quebec groups: SOQUEM, Investissement Quebec, Corem and others

Regional exploration and consolidation

- ✓ Acquired six new prospective graphite properties in Grenville province
- ✓ Permitted La Loutre drill program and started drilling at La Loutre with over 9,000m drilled

Metallurgical work for battery customers underway

- ✓ Selected, shipped and started with sample preparation for pre-feasibility level metallurgical studies (800kg)
- ✓ Completed initial value-added metallurgical studies on La Loutre graphite flotation concentrate including purification and graphite concentrate basic characterizations

La Loutre study priorities underway

Continue with Community and First Nations engagement and communications

- Meeting with the local communities and all stakeholders and shareholders are ongoing

Continue with environmental baseline studies

- Complete 4 full seasons of Environmental Baseline studies by August 2022 and
- Submit Project registration for La Loutre by end of 2022 or early 2023

De-risk resource base

- Drilling program started in mid-May 2022 expected to finish end of September
- Undertake conversion of Inferred resources into Measured and Indicated in the fall



2022 drilling program underway – Actual drilled

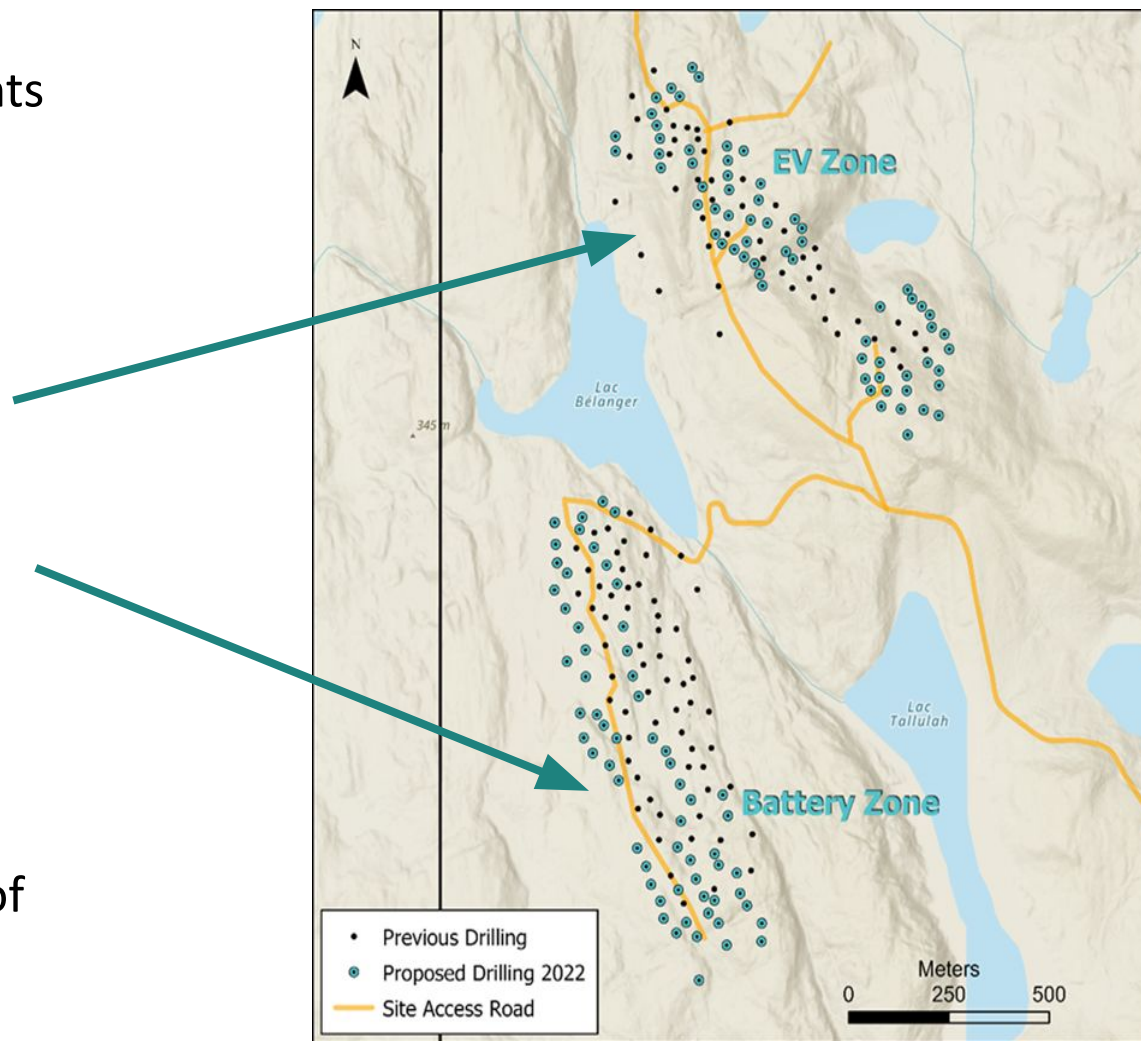
Infill and extension drilling along the strike of the deposits to confirm ore body shape, quality and extents

Focus on higher grade EV Zone

- Completed **53 drill holes** in **EV Zone** for a **total of 9,025 meters**
- ***Discovered new mineralization in EV zone below existing modelled paragneiss mineralization in marble 9-10 meters thick***
- ***Potential to add inferred resources***

Starting drill program at Battery Zone

- Estimating to finish Battery South before the end of September



Source: NI 43-101 Technical Report and Preliminary Economic Assessment (July 2021)

La Loutre initial metallurgical program confirms high purity concentrate

Expanded Graphite +80 & +50 mesh

- **ProGraphite** (Germany) and **Corem** (Quebec) confirm graphite from La Loutre is suitable for a wide range of traditional markets such as refractories, crucibles and friction products, or expanded graphite markets
- **Corem** - 2021 flotation concentrate initial chemical purification trials show that the chemical purification method can upgrade the graphite concentrate from 98.4% C(t) to >99.9% C(t)
- **Key physical and chemical properties:**
 - Well-balanced size distribution (50% >100 mesh, 50% -100 mesh)
 - Degree of graphitization over 98%
 - Achieves low levels of volatiles across all size fractions (0.13-0.38%) and low springback in all size fractions (1.6 – 3.1%),
 - The oxidation resistance of the larger flakes was excellent (<10% for +80 mesh).



La Loutre metallurgical program

Next steps

Next steps:

- Metallurgical sample selected from the existing core from EV and Battery zones
- 800kg of the core was sent to SGS Lakefield for testing
- SGS started with the sample preparation and initial met work in June 2022
- Produce flotation concentrate – second half of 2022
- Further testing for battery-grade material and other value-added products to be completed in Q3&Q4 of 2022

Develop relationships with potential customers

- Market investigation on pricing – working with consultants to further develop Technical Data Sheets and outline test programs to understand the deposits' unique “fingerprint”
- Initial Technical Data sheets developed based on ProGraphite and Corem testing
- Determine La Loutre high-end applications/markets

Corporate budget requirements for La Loutre

The regional exploration program and Bourier work is being funded with Canadian Flow-Through financing

Phase 1 at La Loutre	Cost (\$M)
Resource Drilling	\$3.5
Metallurgy	\$0.6
Environmental	\$0.7
Total	\$4.8

To PFS for La Loutre	Cost (\$M)
Mining & Mining Geotechnical	\$0.7
Infrastructure Geotechnical	\$1.0
Power	\$0.1
Waste Disposal Facility	\$0.4
Environmental	\$1.3
Pre-Feasibility Study Budget	\$1.0
Total	\$4.5

NPV scenario analysis:

Positively leveraged to expected graphite price increases

- PEA used a graphite concentrate selling price of US \$916/t.
- The current forecast selling price is US **\$1,000/t** of graphite concentrate (source: Benchmark).
- Current public information indicates a selling price of over US \$1,500/t

Graphite Price (US\$/t)	Post-Tax NPV (8%)	Post-Tax IRR %	Payback (yrs.)
\$916	\$186M	21.5%	4.2
\$1,000	\$239M	25.0%	3.7
\$1,150	\$332M	31.0%	3.1
\$1,300	\$419M	36.7%	2.6
*\$1,681	\$601M	48.7%	1.9

Source : NI 43-101 Technical Report and Preliminary Economic Assessment (July 2021) (\$916, \$1,150 & \$1,300)

* Peer Group (FS and Construction stage) Average Forecast Selling Price of Flake Graphite

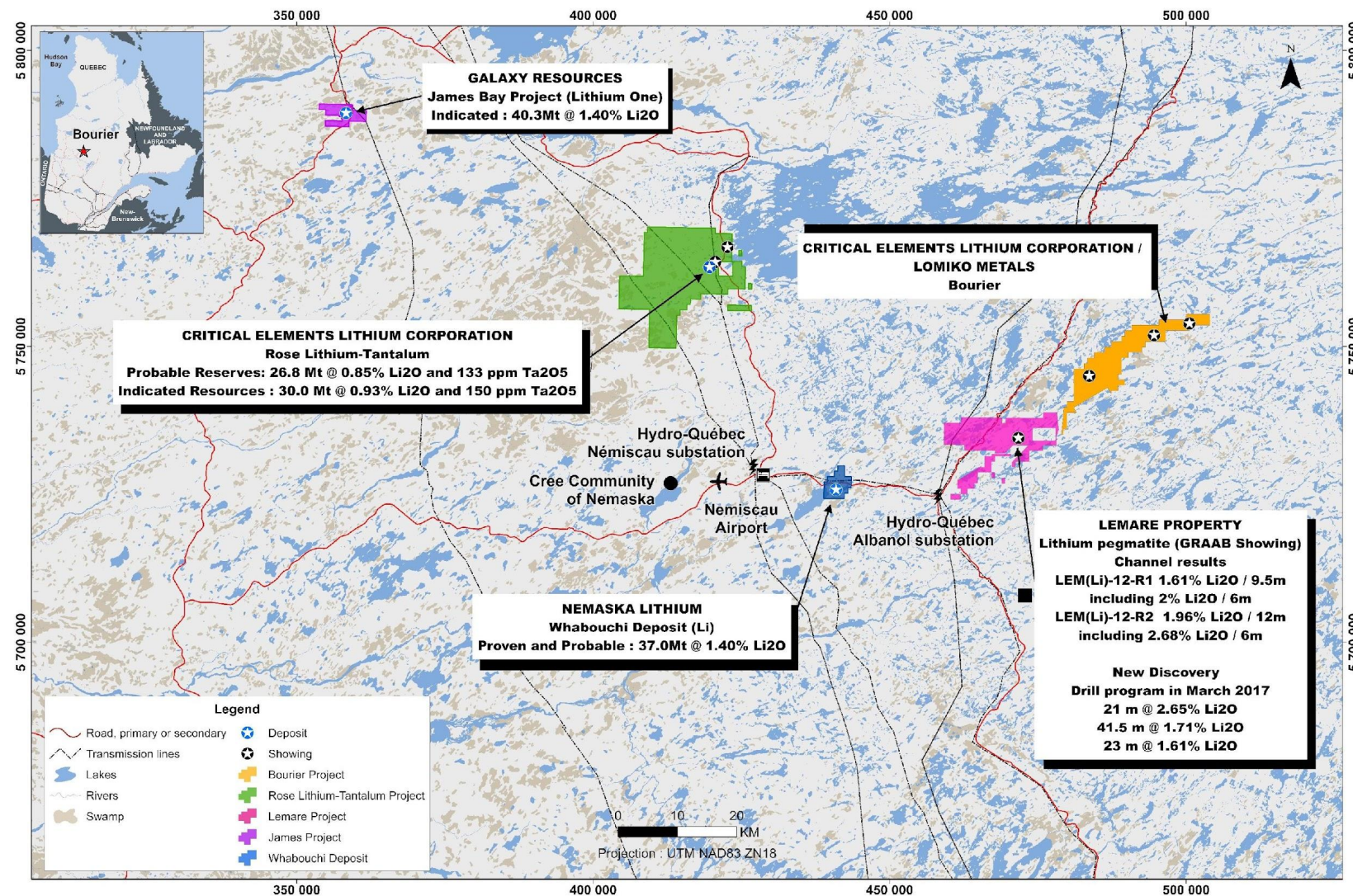
Bourier lithium project: highly prospective region

Bourier

Adjacent Properties:

- Galaxy Resources
- Nemaska Lithium
- Critical Elements

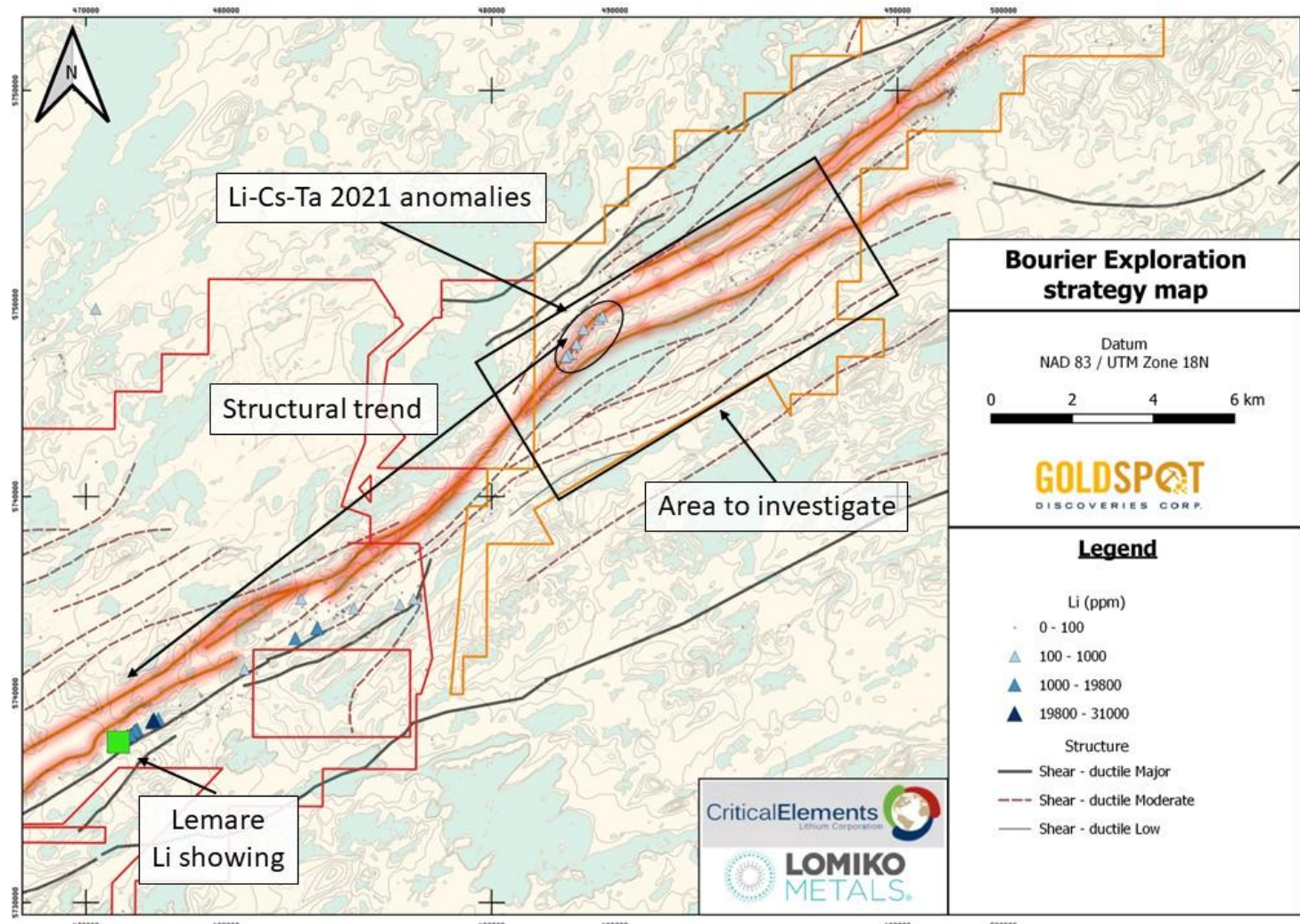
1. Rose Tantalum Project FS stage
2. Lemare Property:
 - **New Discovery – March 2017 Drilling**
 - 21m @ 2.65% Li₂O
 - 41.5m @ 1.71% Li₂O
 - 23m @ 1.61% Li₂O



Bourier lithium project

Bourier 2021 Field Work Summary

- The analytical results feature high-grade values for zinc and tungsten and anomalies in lithium-tantalum-cesium and gold.
- The lithium-tantalum-cesium anomalies represent an unprecedented discovery and spans along a 2.5 km long NE-trending mica-rich white pegmatites system.



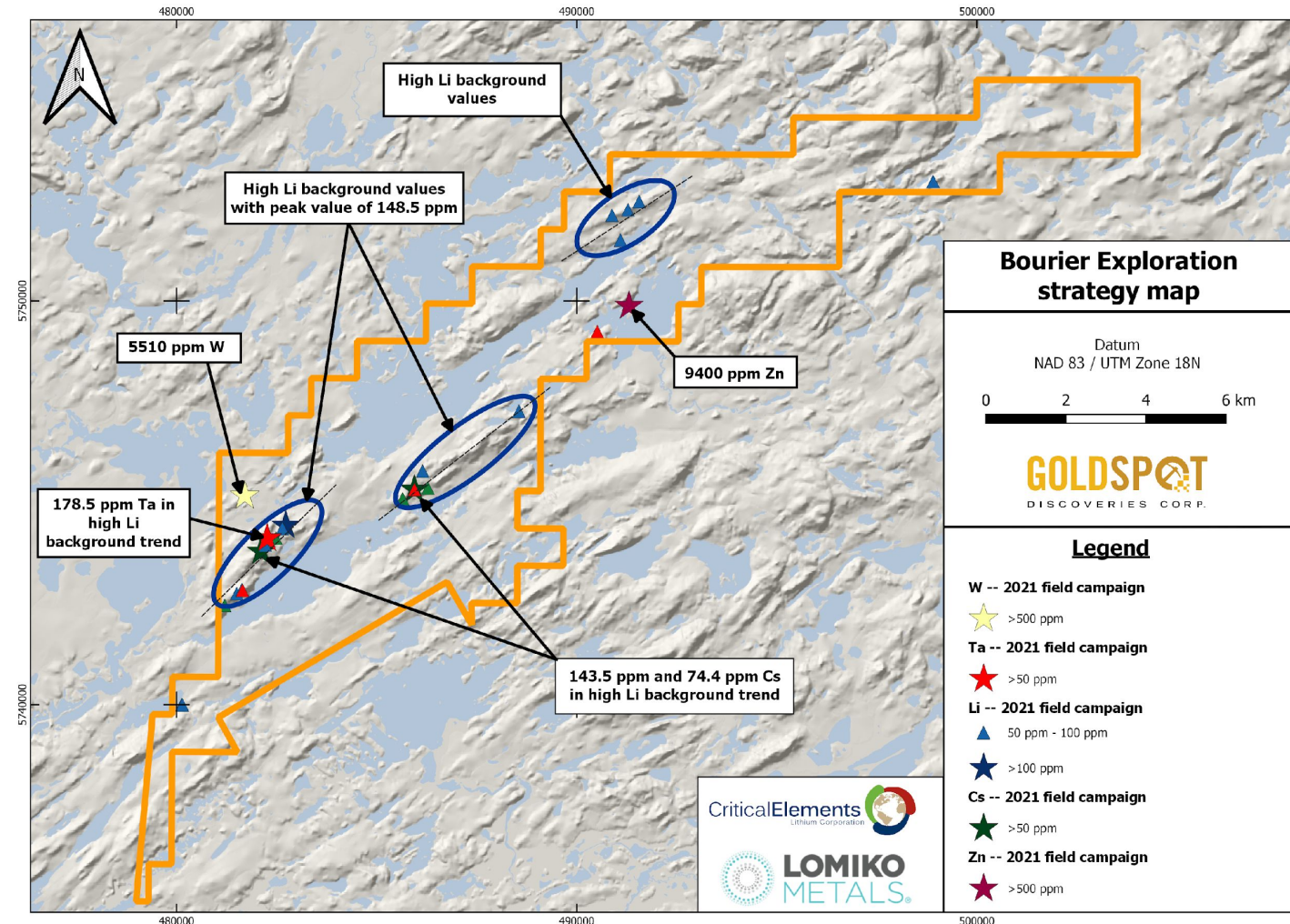
Source: Critical Elements Corp.

Bourier lithium project identifies exploration targets with Li anomalies

2021 Exploration Results

Bourier Exploration Program 2022

- Located on Nemiscau greenstone belt and Critical Elements south-east of the Cree Eeyou Istchee James Bay territory in Quebec.
- Summer:** intensifying prospection over anomalous zones, including strategic soil surveys
- Completed field program in July with Critical Elements and GoldSpot AI
- Collected over 1000 soil samples and over 400 rock samples



Comparable company analysis demonstrates value creation potential

Aug 3, 2022

Symbol	Price	Company Name	Shares O/S	Cash	TEV	Market Cap (\$M)	Measured (Mt)	Indicated (Mt)	Inferred (Mt)	EV/Resource (M&I)
TSXV:NOU	6.75	Nouveau Monde Graphite Inc	56	43	337	376	24.5	95.8	4.5	2.8
TSX:NEXT	2.71	NextSource Materials Inc	99	16	252	268	23.6	76.8	40.9	2.5
TSXV:GPH	1.33	Graphite One Inc	87	6	118	116	1.7	9.3	91.9	10.8
TSXV:SRG	0.84	SRG Mining Inc	114	17	80	95	2.1	17.0	2.8	4.2
TSXV:LLG	0.39	Mason Graphite Inc	141	14	42	55	19.0	46.5	17.6	0.6
TSXV:NGC	0.45	Northern Graphite Corp	119	1	52	53	9.0	92.6	35.9	0.5
TSXV:LEM	0.23	Leading Edge Materials Corp	153	2	33	35	1.0	9.8	2.5	3.1
TSXV:FMS	0.29	Focus Graphite Inc	55	6	10	16	0.4	68.4	18.0	0.1
TSXV:LMR	0.05	Lomiko Metals Inc	287	5	8	13		23.1	46.8	0.3
TSXV:STS	0.50	South Star Battery Metals Corp	24	2	9	12	3.9	11.0	7.9	0.6
TSXV:CCB	0.05	Canada Carbon Inc	141	1	6	6		2.6	7.6	2.2
TSXV:GEM	0.07	Green Battery Minerals Inc	69	2	2	5		1.8	1.5	1.4
Median					37	44				1.8
Median (Excl Lomiko)					42	53				2.2

Source: Gurufocus.com and Company data

Diverse leadership with solid experience building businesses

MANAGEMENT TEAM

Belinda Labatte, CEO, CFA, MBA, ICD.D

20 years experience in capital markets. Fluent in French. Served as Chief Dev. Officer for Mandalay Resources

Gordana Slepcev, COO, P.Eng., M.Sc.

Mining Engineer served as COO for BMSI/BarCan and Anaconda Mining

Vince Osbourne, CFO, CMA, CBV

Senior finance professional with Sobeyes
Over 19 years experience in finance

Mike Petrina, VP Projects, P.Eng

Mr. Petrina is a mining engineer that has held executive roles with Adanac Molybdenum, Hawthorne Gold, MAG Silver and Probe Minerals

BOARD OF DIRECTORS

A. Paul Gill, Executive Chair

CEO of Pampa Metals, Lomiko Technologies, and a Director of Pampa metals, Graphene ESD and Altair Ventures

Anu Dhir, Lead Independent Director, Chair of ESG Committee ^{1,2}

Co-founder of a technology company called Wshingwell, was a co-founder and executive of ZinQ Mining, director of Taseko Mines Ltd.

Sagiv Shiv, Chair of Audit Committee ^{1,3}

Managing Director at B. Riley Securities based in New York City. Led the global M&A and Advisory Practice at INTL FCStone Inc. and at Merriman Capital

Eric Levy, Chair of Corporate Compensation, Governance and Nominating Committee ³

Head of Osler's Montreal Corporate Group and Chair of the Gaming Group and sits on the Osler Partnership Board. Specializes in cross-border M&A and securities law

Belinda Labatte CEO and Director ¹

Dominique Dionne, Independent Director ^{2,3}

Chairs the board of directors of Public Relations Without Borders. Held the position of Vice President, Public Affairs and Strategic Communications at PSP Investments.

Lee Arden Lewis, Independent Director ²

Status member of the Mohawks of the Bay of Quinte Tyendinaga Mohawk Territory. Working with the Assembly of First Nations (AFN) and the Aboriginal Traditional Knowledge Groups

STRATEGIC ADVISORS

Normand Champigny, CEO and Director Quebec Precious Metals

Geological engineer with extensive experience with both public and private companies, both domestically and internationally. Currently a director of Bonterra Resources

Anne Chabot, Special Advisor to the Board and Management

Strategic advisor to management on our work with First Nations engagement, supported by Lee Arden Lewis as Independent Director of the Board. 25 years of experience working with Indigenous and non-Indigenous governments, agencies and community groups

- ¹ *Member of Audit Committee*
- ² *Member of Environment, Social and Governance Committee*
- ³ *Member of Corporate Compensation, Governance and Nominating Committee*

Capital Structure

As at Aug 3, 2022

Shares Issued & Outstanding	287.4M
Options	13.4M
Warrants	96.7M
Share Units (PSU/RSU/DSU)	8.9M
Fully Diluted	406.4M
Management & Insider Ownership %	6.5%

Market Cap (Aug 3)	\$12.9M
Cash*	\$5.2M
Debt	\$ -
Total Enterprise Value	\$7.7M

* Cash balance as at last interim financials – April 30, 2022

Shareholder value generation in 2022

THE LOMIKO GRAPHITE OPPORTUNITY

LA LOUTRE

- **Drill program underway** to increase resource quality and rerate inferred resources in the measured and indicated
- Further metallurgical testing to confirm flowsheet and confirm initial metallurgical value-added studies -purified to 99.9% Cg

REGIONAL

Significant Grenville graphite upside potential based on geophysical surveys and exploration underway

PLUS OTHER CATALYSTS

Bourier lithium exploration – Collected **over 1,100 soil samples and 400 rock samples** in July, next steps include generating drill targets

GRAPHITE PRICES INCREASE OVER 20-44%

Fines – from US\$500 to US\$723

Large - from US\$983 to US\$1,187

EV BATTERY DEMAND

Annual growth rate: 30%

LARGE AUTO COMPANIES

Announced aggressive EV targets

Appendix

July 2021 Canada's federal gov't announces: All of Canada's new cars will be electric by 2035

The challenge:

To reach even 50% of EV penetration in vehicles requires 20x increase in battery supply. Renewable energy supercentres, longer life batteries, and charging stations can and should be sourced from Canadian critical minerals

The demand:

“the production of minerals, such as graphite, lithium, and cobalt, could increase by nearly 500% by 2050, to meet the growing demand for clean energy technologies” : World Bank report Mineral for Climate Action: The Mineral Intensity of the Clean Energy Transition

Insufficient supply:

“prices for critical minerals would reach historical peaks for an unprecedented sustained period by several 100% from 2020 as a result of the deficits in the supply chain”: IMF

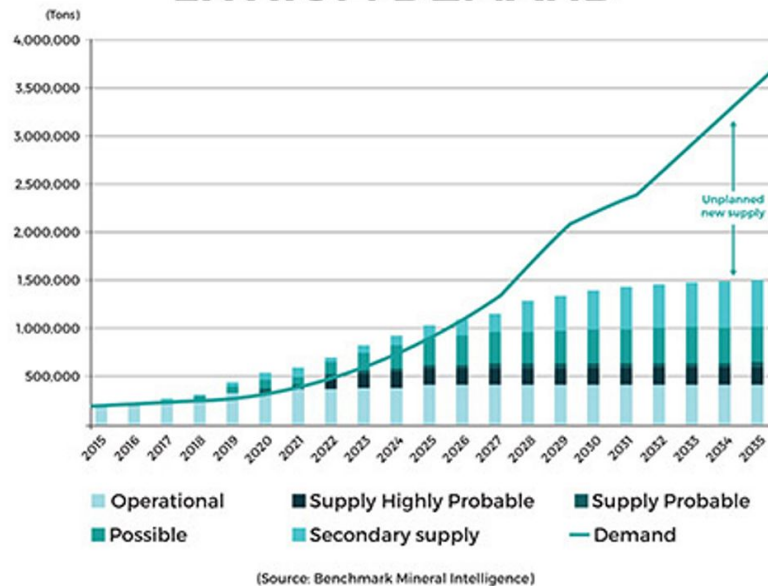
Geopolitical context:

We need a responsibly sourced, secure, and stable supply of critical minerals assets for North American solution

Graphite and lithium in supply bottleneck

- Graphite demand is expected to increase 7x by 2030, behind lithium
- Total lithium available will be enough to satisfy 22% of EV penetration
- Both lithium and graphite to see a supply deficit by 2024
- Lithium-ion batteries and fuel cells demand is set to grow exponentially, especially for electrical and hybrid vehicles

LITHIUM DEMAND



Flake Graphite demand per industry

	Units	+50	+80	+100	-100
Carburisation	%	-	-	-	100%
Lubricants	%	5%	5%	-	90%
Graphite shapes	%	-	-	20%	80%
Refractory and foundry	%	2%	23%	45%	30%
Expanded graphite	%	55%	25%	20%	0%
Friction products	%	-	20%	20%	60%
Carbon brushes	%	-	20%	20%	60%
Other uses	%	5%	5%	10%	80%
Li-ion battery	%	-	-	0%	100%

Natural flake graphite is highly amenable product for the EV battery industry

Natural Graphite deposits of economic interest are grouped into three main categories

- Amorphous (microcrystalline) Cg % - 60 - 99.9
- Vein Graphite (lump and chip) Cg % - 90 - 99.0
- **Flake Graphite (crystalline)** Cg % - 80 - 99.9

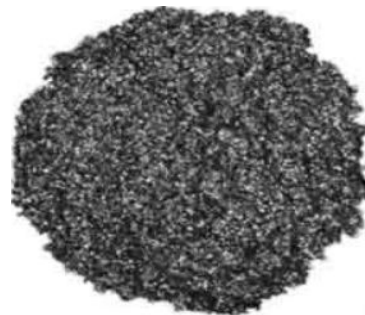
Spherical Graphite is the product that is consumed as an anode in lithium-ion batteries. Flake graphite concentrate is processed into ultra-high-purity graphite which is used as a battery anode material
It takes 2.2 tonnes of flakes to produce 1 tonne of spherical graphite



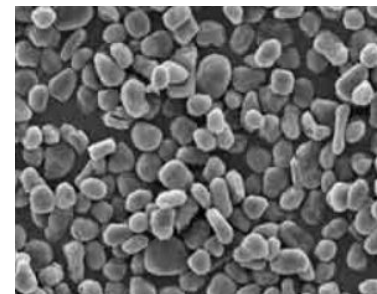
Amorphous Graphite



Vein Graphite



Flake Graphite



Spherical Graphite

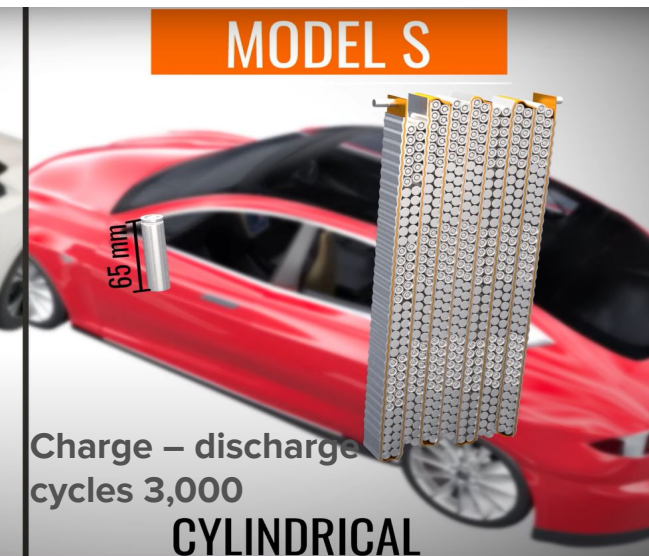
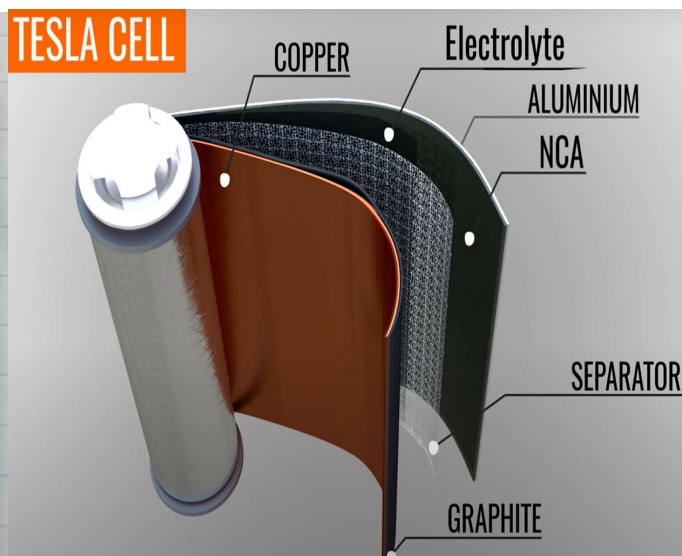
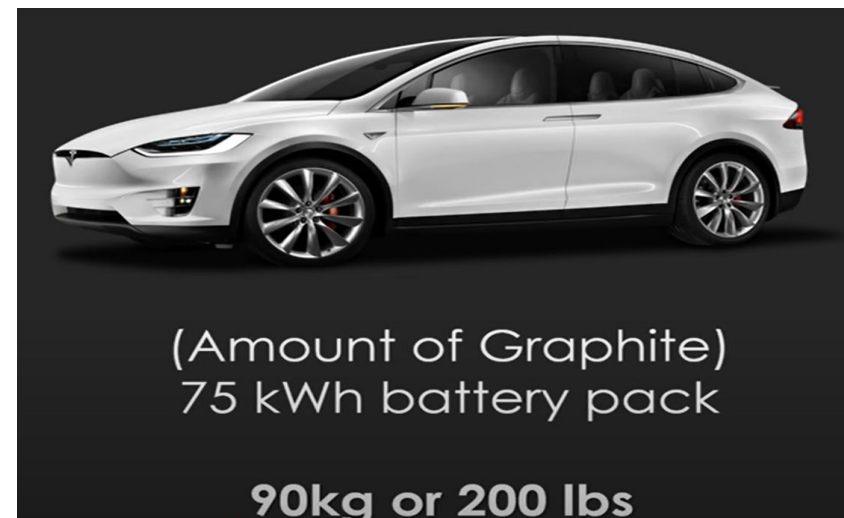


Synthetic Graphite

Electric Vehicles Batteries

Tesla plans to replace 18650 with 4680 DBL (dry battery electrode)
Raw materials in an electric car battery of 100 kWh, weighing 600kg:

- 7 kg of lithium (70g per kWh)
- 10 kg of manganese
- 11 kg cobalt (4.5kg for 75kWh)
- 70 kg of nickel (Ni-Co-Al~ 8:1:1)
- **125 kg graphite**

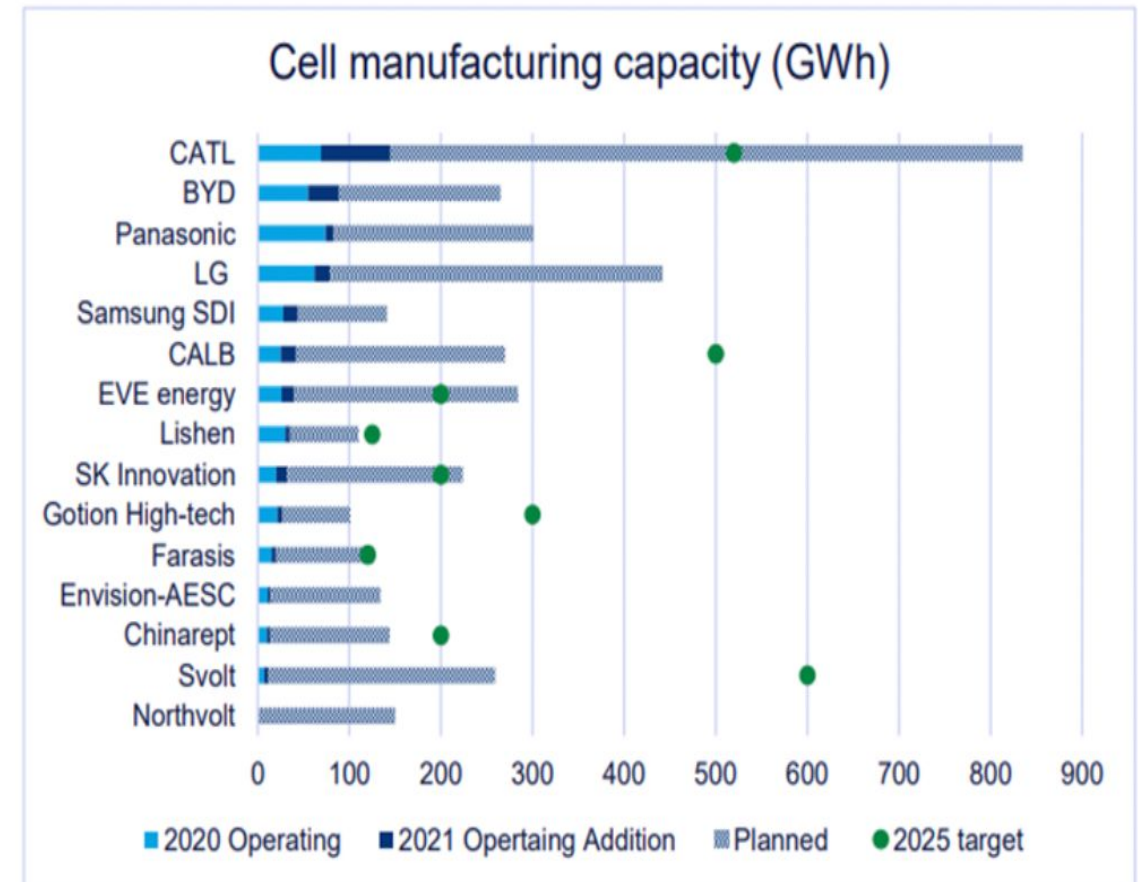


Global battery supply opportunities are significant

Battery manufacturers and GWH capacity worldwide

- Current capacity 600 GWh
- Projected capacity by 2030 5,500GWh (China 3,000GWh)
- China accounted for 90% of the world's battery manufacturing in 2021. By the end of the decade, the region is expected to reduce its share to 69%.
- North America's cell capacity could expand 10-fold by 2030
- Europe will account for over 20% of global capacity by 2030 through more rapid expansion.

Battery manufacturing capacity by 15 global manufacturers (including JVs)

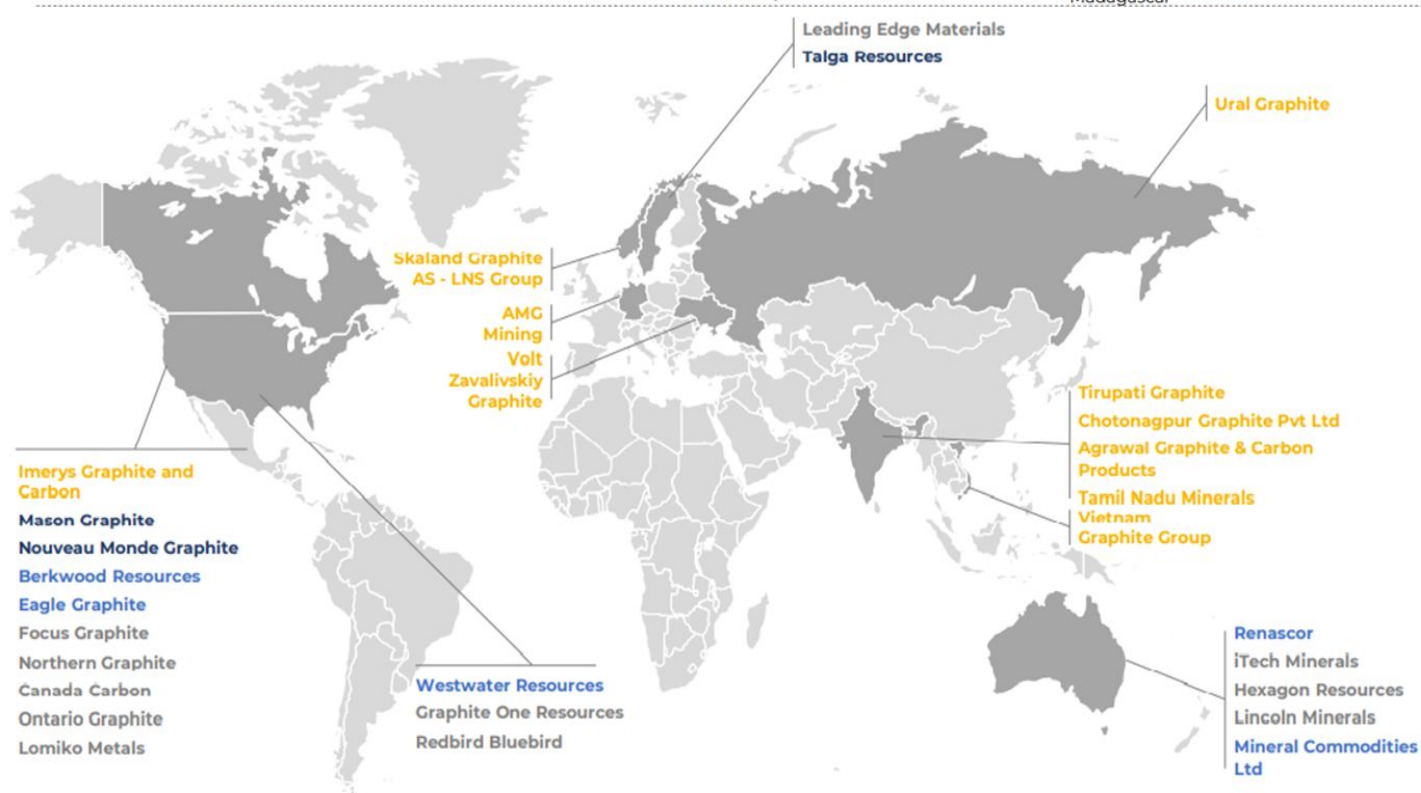
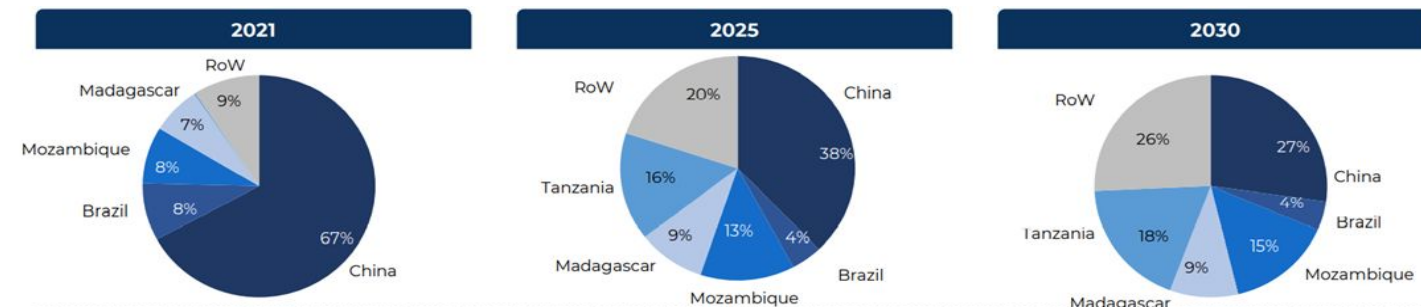


Source: Wood Mackenzie March 2022

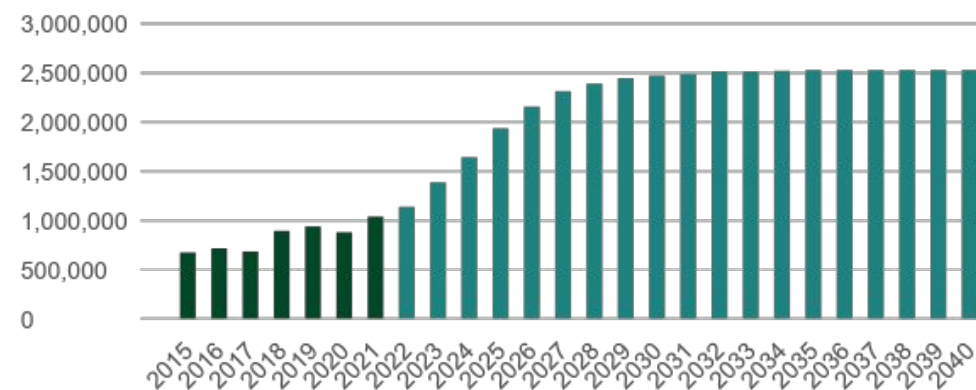
Graphite Pricing May 2022 – Fastmarkets

GLOBAL GRAPHITE PRICES	
	New price
Graphite flake 94% C, +100 mesh, fob China, \$/tonne	1,010
Graphite flake 94% C, -100 mesh, fob China, \$/tonne	830
Graphite flake 94% C, +80 mesh, fob China, \$/tonne	1,250
Graphite flake 94% C, +100 mesh, cif Europe, \$/tonne	1,400
Graphite flake 94% C, -100 mesh, cif Europe, \$/tonne	920
Graphite flake 94% C, +80 mesh, cif Europe, \$/tonne	1,535
Graphite spherical 99.95% C, 15 microns, fob China, \$/tonne	3,500-3,600
Graphite amorphous 80% C, -200 mesh, fob China, \$/tonne	550-580
Graphite amorphous 80% C, -200 mesh, FCL, cif Europe, \$/tonne	760-835
Source: Fastmarkets	

Flake Graphite Supply Forecast



Total Graphite Supply - Projected (Mt)



Opportunity:

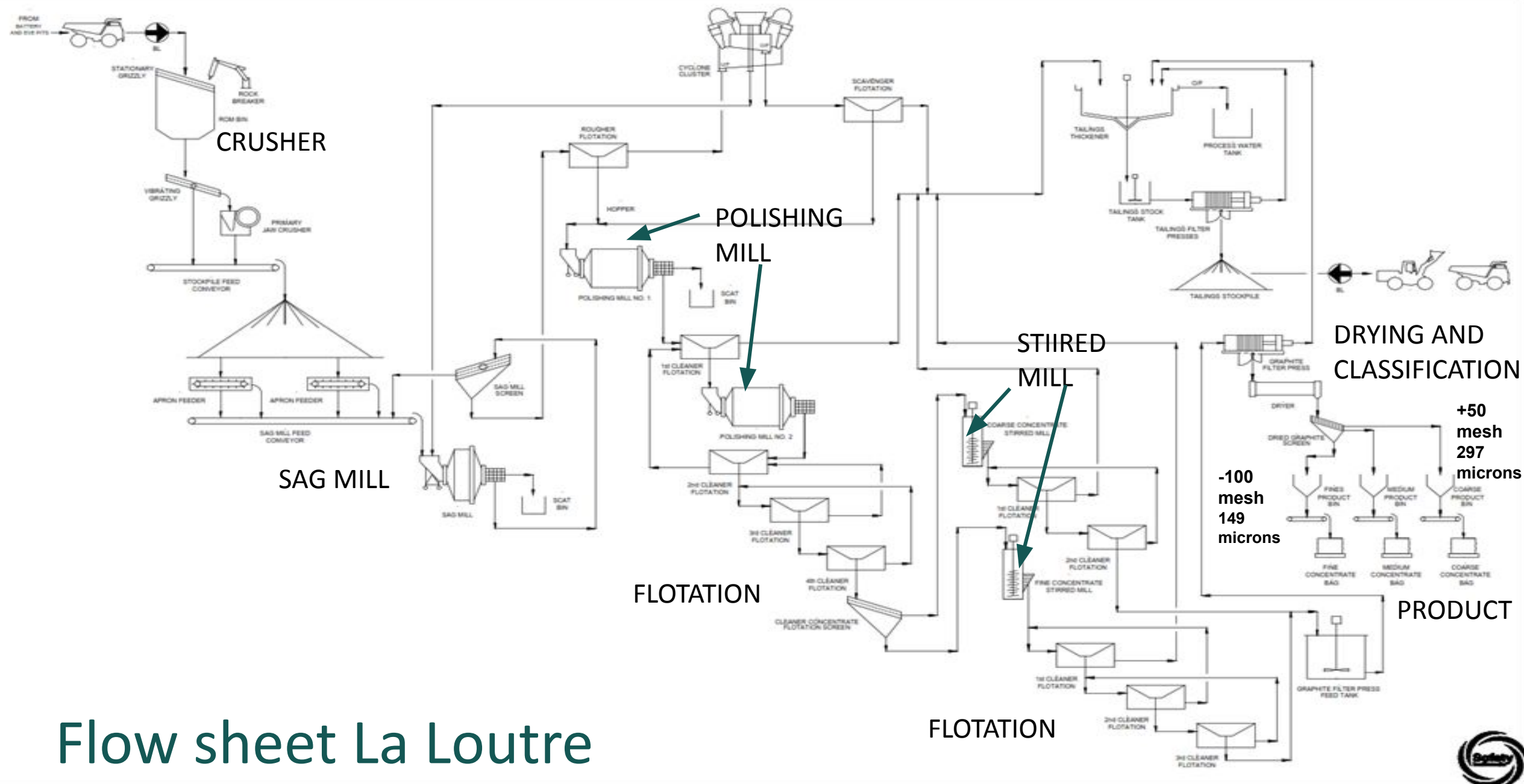
The evolving nature of China's graphite supply chain makes it increasingly likely that exports could become limited over the coming years, heightening the need for diversification of graphite supply elsewhere in the world.

Flow sheet La Loutre

Size Fraction Analysis of Combined Concentrate of LCT

Size (Mesh)	Size (µm)	Mass (%)	C(t) (%)	C(t) Distribution (%)
+32	+500	1.0	97.6	1.0
+48	+300	9.8	97.4	9.7
+80	+180	21.6	98.0	21.7
+100	+150	10.8	98.2	10.9
+150	+106	17.5	98.1	17.5
+200	+75	13.0	98.3	13.1
+325	+45	13.5	98.1	13.6
-325	-45	12.8	96.0	12.5

Source: NI 43-101 Technical Report and Preliminary Economic Assessment La Loutre (July 2021)



Flow sheet La Loutre

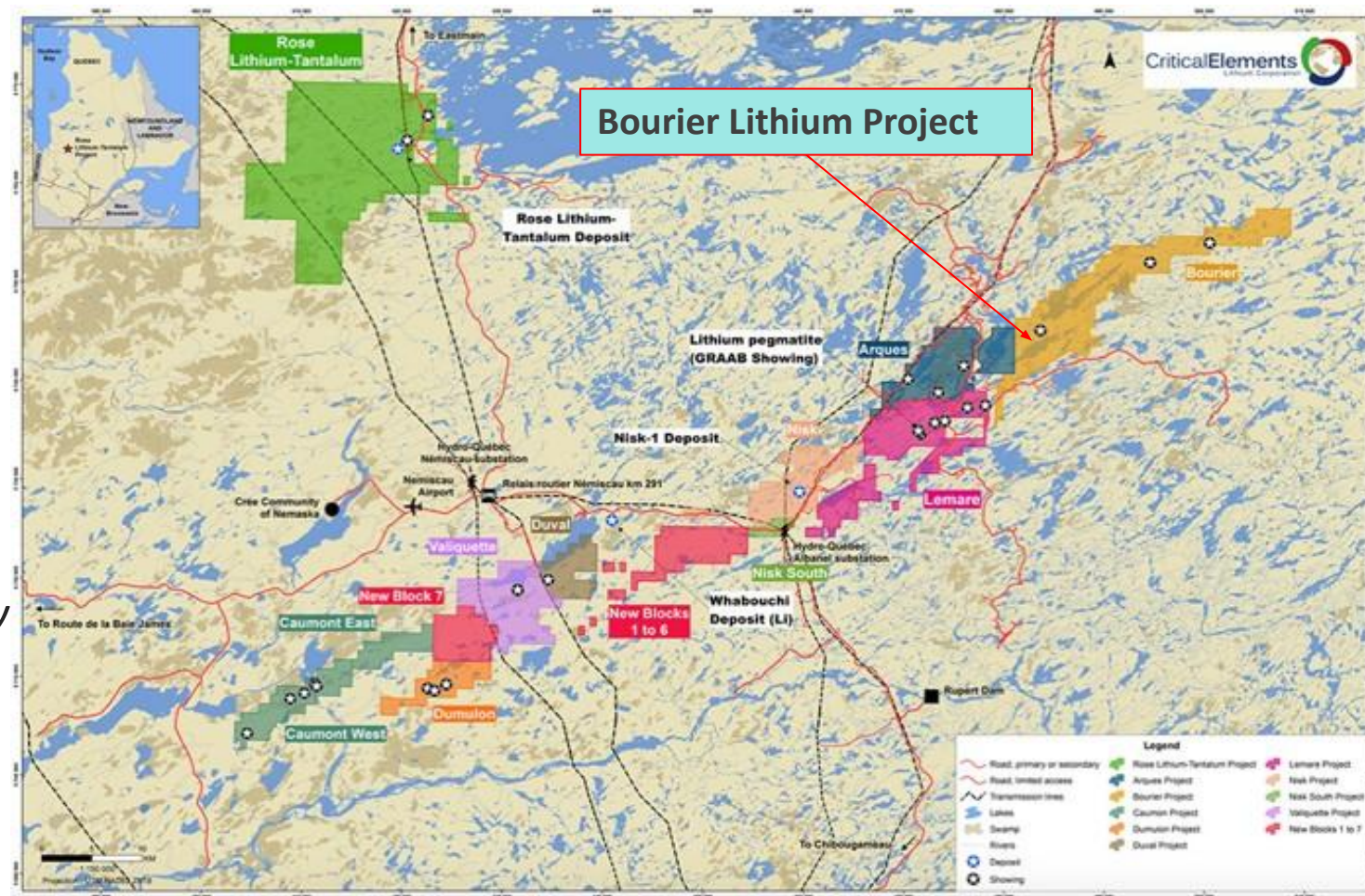
Bourier lithium assets close to infrastructure

Bourier

Stage of development: Early-Stage exploration

- Concession size: 10,252 ha
- Location: Quebec, Nemaska
- Lomiko to earn up to 70% of Bourier with milestone payments
- Geology - volcanic-sedimentary unit

Lithium expected to have 50% deficit in supply by 2030 (source: UBS report 2021)

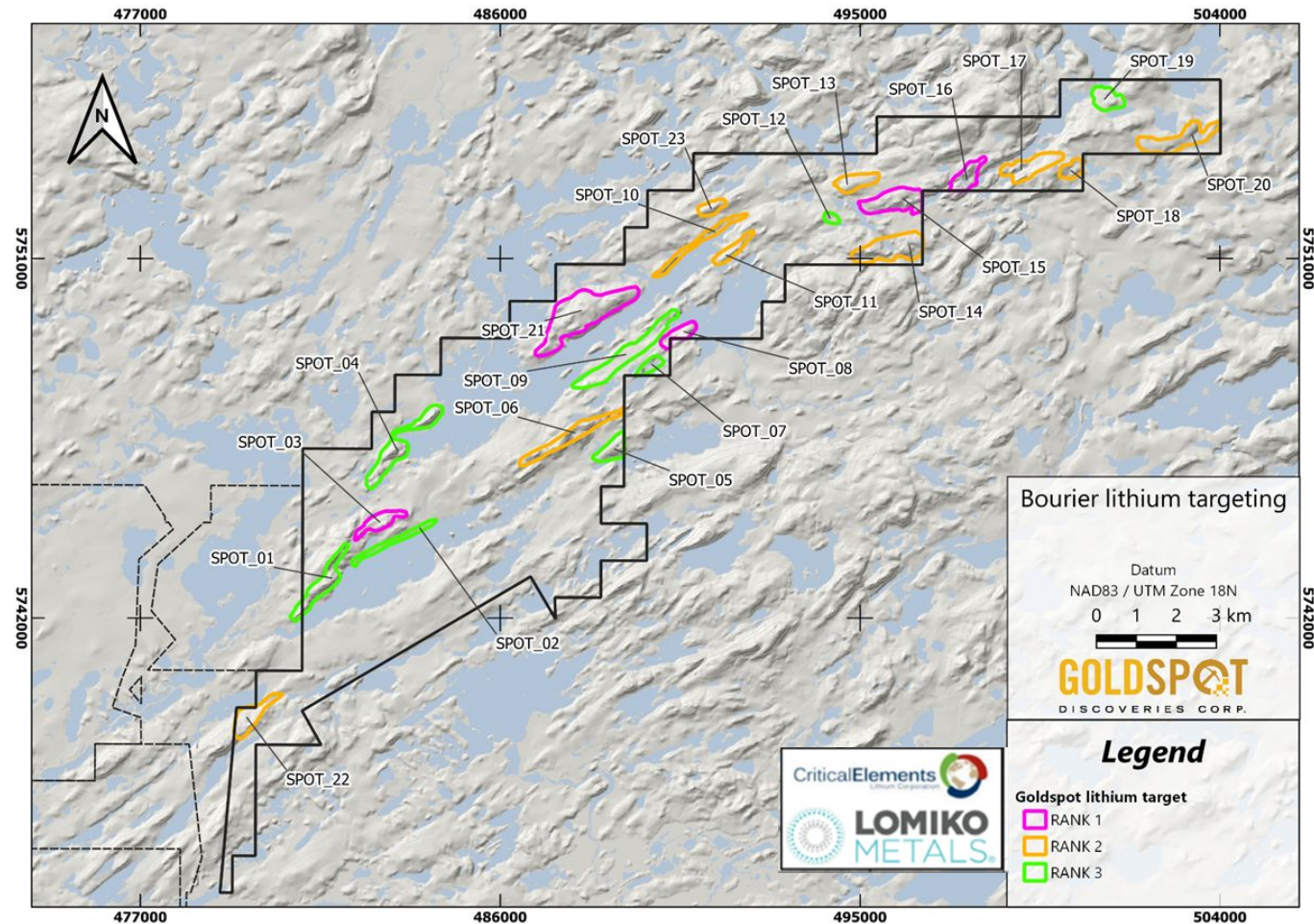


Source: Critical Elements Corp.

Bourier lithium project targeting

AI Targeting at Bourier (2021)

- GoldSpot highlighted lithium exploration targets at the Bourier project, using both traditional and machine learning approaches with various combinations of the numeric and categorical data and interpretations generated from the geoscience work.
- Target generation has narrowed the exploration focus to 10.5% (12.1 km²) of the total pertinent claim holdings, providing the ability to prepare for field exploration in a time- and cost-efficient manner.

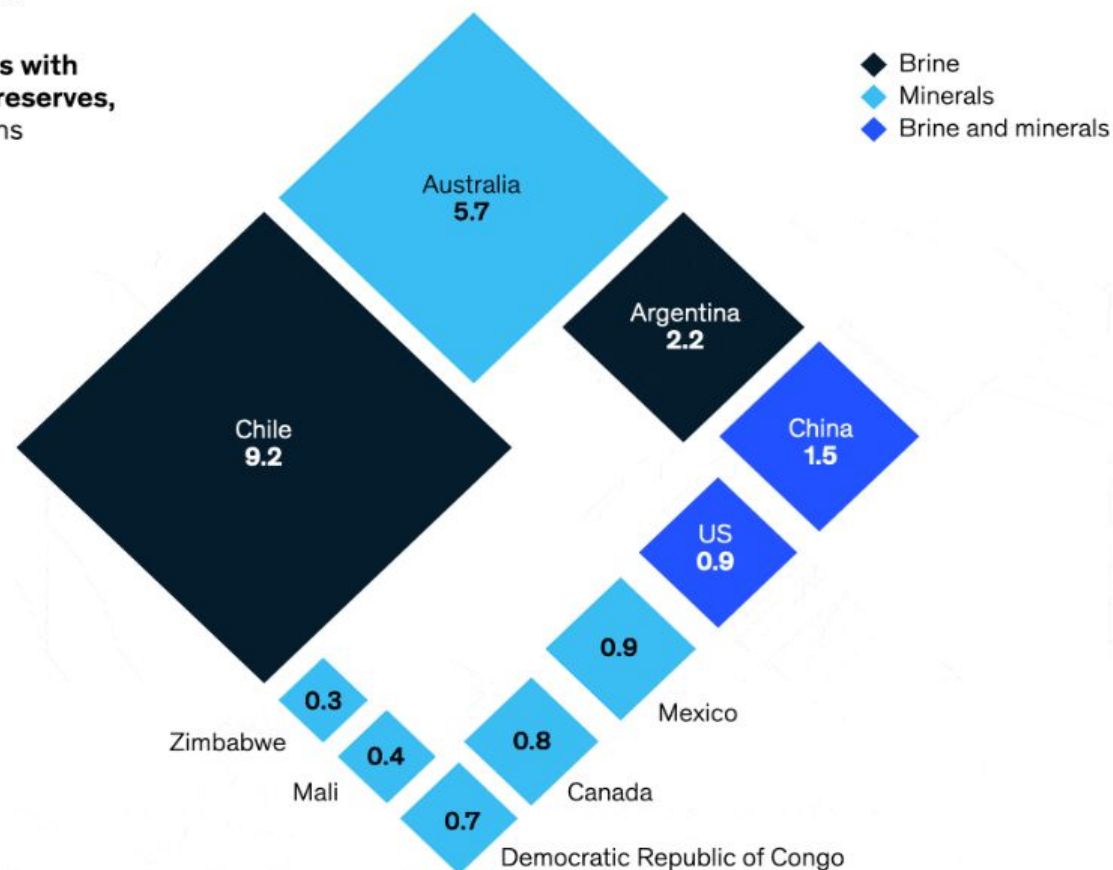


Source: Critical Elements Corp.

Lithium Reserves by Country

Most of the confirmed lithium reserves are concentrated in Latin America and Australia.

Top 10 countries with largest lithium reserves, million metric tons

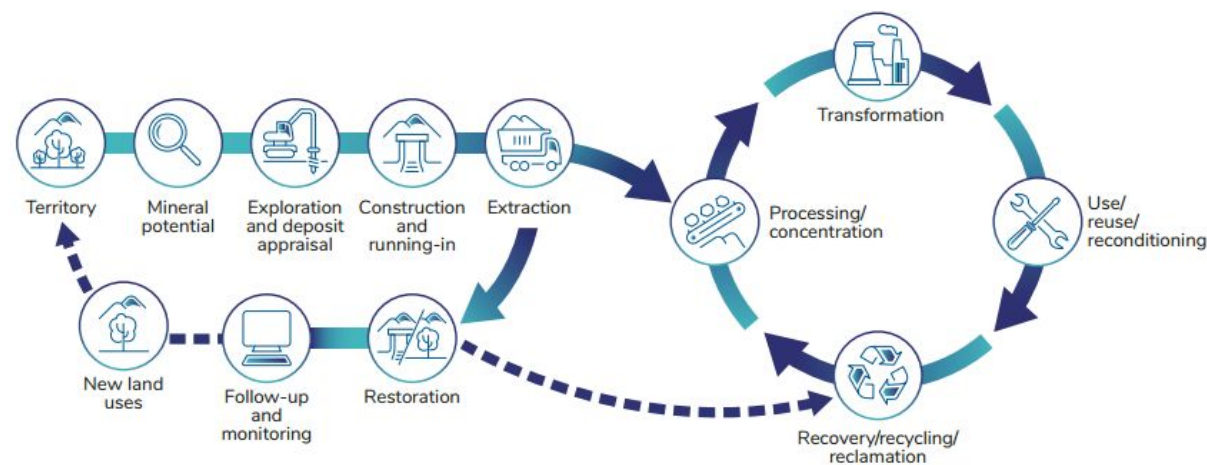


Source: United States Geological Survey; MineSpans

We will create multiple ways to win with re-rate opportunities

S&P 500 performance (source: Cowen 03/21)

- Battery names generate 700% returns in 12 months
- EV names generate a 400% return
- RE producers: trade at 28x EV/ EBITDA
- Mining companies: trade at 4x EV/ EBITDA



Source: QUÉBEC PLAN FOR THE DEVELOPMENT OF CRITICAL AND STRATEGIC MINERALS 2020-2025

Capital Structure

As at Aug 3, 2022

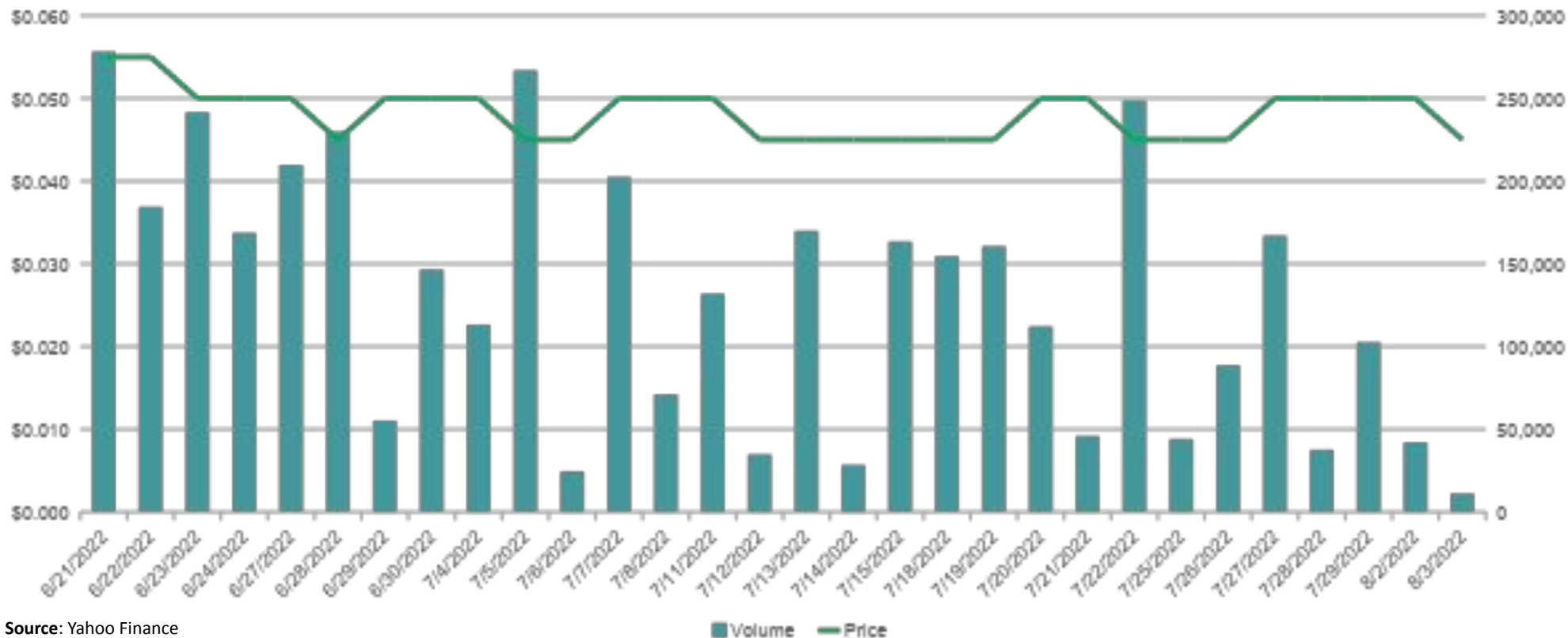
Issued & Outstanding Shares (M)		287.4		
Issue Date	Number of Options	Option Price	Expiry Date	
August 26, 2019	0.4	\$ 0.050	8/26/2022	
December 18, 2020	2.6	\$ 0.050	12/18/2025	
August 4, 2021	3.9	\$ 0.120	8/4/2026	
October 25, 2021	3.9	\$ 0.120	10/25/2026	
February 7, 2022	2.0	\$ 0.070	2/7/2027	
February 21, 2022	0.4	\$ 0.070	2/21/2027	
April 5, 2022	0.4	\$ 0.085	4/5/2027	
Total Stock Options		13.4		

Issue Date	Number of Warrants	Warrant Price	Expiry Date	
October 28, 2020	14.0	\$ 0.100	10/28/2022	
December 23, 2020	10.9	\$ 0.100	12/23/2022	
January 19, 2021	4.1	\$ 0.100	1/19/2023	
February 1, 2021	13.6	\$ 0.100	2/1/2023	
March 15, 2021	14.7	\$ 0.250	3/15/2023	
March 22, 2021	4.3	\$ 0.250	3/22/2023	
May 20, 2021	0.1	\$ 0.170	5/20/2023	
June 3, 2021	0.1	\$ 0.170	6/3/2023	
December 22, 2021	10.1	\$ 0.180	12/22/2023	
January 19, 2022	19.4	\$ 0.110	1/19/2027	
July 25, 2022	5.5	\$ 0.100	7/25/2024	
Total Warrants		96.7		

Share Units (DSU/PSU/RSU)	8.9
Fully Diluted (M)	406.4

30-Day Share Price and Volume

As at Aug 3, 2022



Source: Yahoo Finance

30-Day average closing price \$0.048

30-Day average trading volume: 131,094