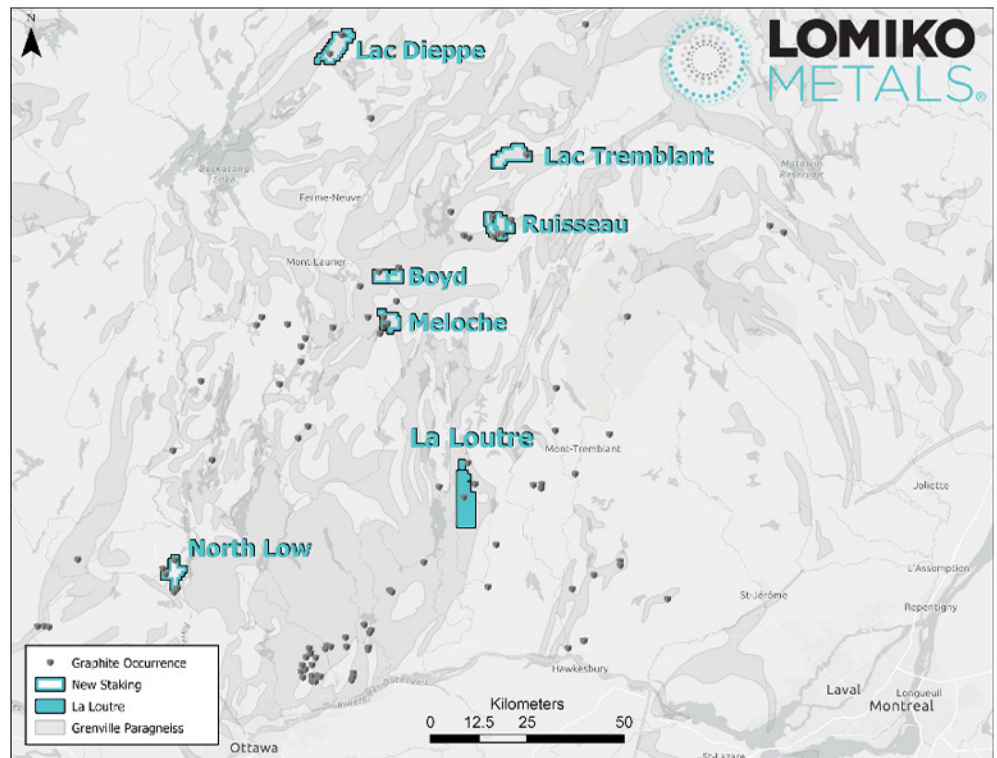




Lomiko Metals New Graphite Claims

Lomiko has staked approximately 14,255 hectares of mineral claims, 236 claims in total, on six projects in the Laurentian region of Quebec and within First Nations territory. These new claims lie within a 100 km radius of the Company's flagship La Loutre graphite project and 28 claims are directly contiguous to La Loutre, with the Company claim package now covering 4,528 hectares.



Lac Boyd Project

Secured open ground adjacent to Standard Graphite Deposits.

Location: South of highway 117; east of Mont-Laurier

of claims: 28 claims

Lac Boyd

Location: Mineralized zone with outcrop located 7 km southeast of the village of Lac-des-Écorces (Rang E; Lot 8).

Year discovered: 1933 **Grade:** No grade reported.

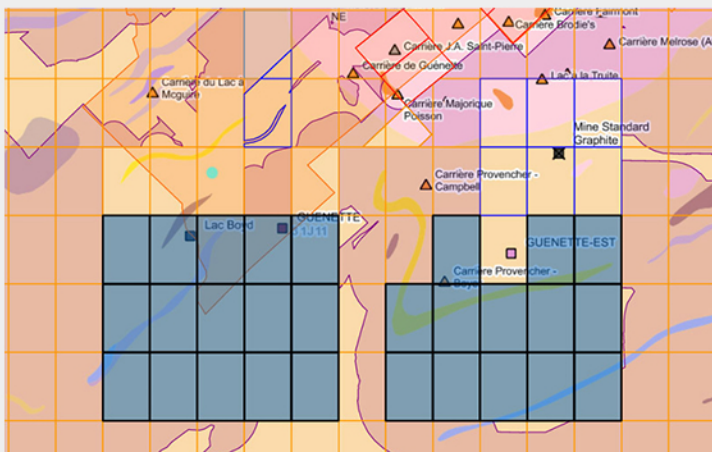
Nearby Showings / Mines

Standard Graphite

Location: Mineralized zone with outcrop located 2.5 km northeast of the village of Guénette (Rangs VI, VII; Lots 28 -31).

Year discovered: 1922

Mineralization: Grade: \pm 9.02 to 22.40% graphite in the best areas (selected samples).



Lac Dieppe Project

Secured large parcel of open ground within favourable graphite bearing paragneiss and regional structures with two graphite showings.

Location: 55 km north of Mont-Laurier. Main logging road 7km east with a network of trails and roads through the proposed project

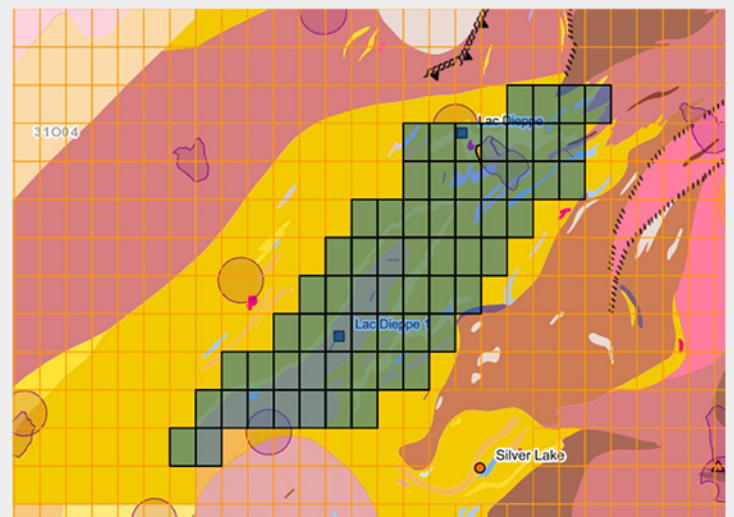
of claims: 63 room to expand

Lac Dieppe

Mineralization: 11.6% Cg. The mineralization consists of graphite flakes 2 mm in diameter.

Lac Dieppe 1

Mineralization: 11.4% Cg. The mineralization consists of graphitic carbon.



Lac Meloche Project

Secured parcel of open ground within favourable geology and regional structures with two graphite showings.

Location: 25 km southeast of Mont-Laurier. Excellent access.

of claims: 24 room to expand

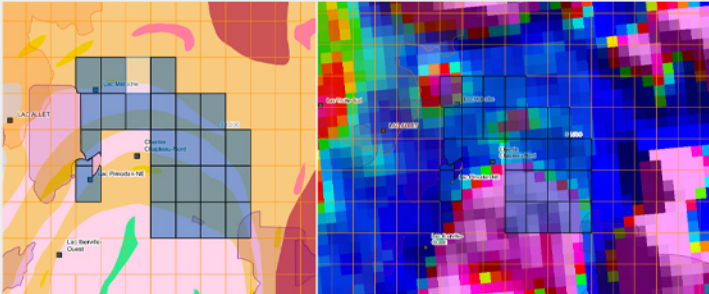
Lac Meloche

Location: Mineralized zone with outcrop located 600 m NE of Lac Meloche (Rang XII; Lots 27-28)

Lithologies: A – Biotite paragneiss; B-Quartzite. Minerals: Graphite, quartz, feldspar.

Morphology: Probably a cluster associated with paragneiss and quartzite.

Mineralization: Grade: 11.09% Cg, 11.38% Cg, 13.09% Cg, 10.40% Cg and 13.85% Cg (surface samples nos. 51038, 51040, 51045, 51046 and 51048 ; GM-51088).



Ruisseau Project

Secured large parcel of open ground within favourable paragneiss and regional fold structures.

Location: 50 km ENE of Mont-Laurier. Excellent access. The land package is secured around four major showings

Ruisseau Lanthier (Zone A)

Mineralization: Grade: 10.14% Cg (graphitic carbon) over 6.0 m (hole T89-13); 12.46% Cg over 3.0m (90-20 sounding); 15.88% Cg over 2.14 m (hole T89-04); 19.49% Cg and 19.19 Cg (surface sample T-004 and T-005-A) (GM-51068).

Lac Michaudville (Zone B)

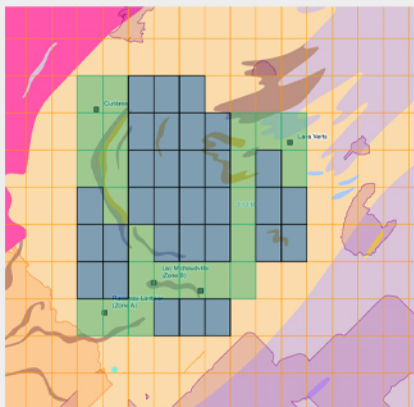
Mineralization: Grade: 15.53% Cg, 12.60% Cg, 11.40% Cg and 8.70% Cg (surface sample T-017, T-018, T-015 and T-021; GM -51068).

Ruisseau Jaune (Zone C)

Mineralization: Grade: 12.17% Cg (graphitic carbon) (example T-023) and 11.86 Cg (T-024); surface samples. Drilling samples assayed 9.86% Cg over 46.75 m (drilling 90-44); 10.48% Cg over 5.20 m (drilling 90-43); 12.17% Cg and 11.86% Cg; GM-51068.

Lacs Verts

Mineralization: Grades: Four grab samples from two mineralized discoveries, respectively assayed 20.73% graphitic carbon Cg (example no.42409), 21.25% Cg (example no.42411), 23.0% Cg (sample no.42424) and 15.09% Cg (sample no.42425). A hole (V90-06), drilled 700 m to the WNW, intersected 9.25% Cg over 3.35 m in graphitic rock, sometimes carbonated (marble).



North Low Project

Secured large parcel of open ground within favourable geology with potential regional fold structures and three graphite showings.

Location: 40 km north of Gatineau, excellent access

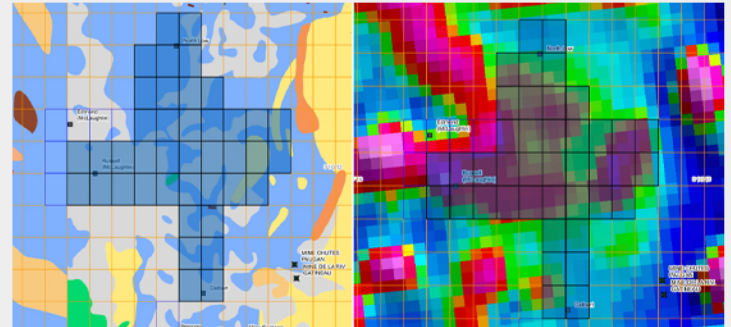
of claims: 41 claims by staking, acquiring 8

Available Showings

Lithology: Irregular bands and veins of graphite along the contact of gabbro dykes cutting calcitic marble.

Morphology: This graphite mineralized zone consists of irregular bands of graphite along the contact of gabbro dykes in marble.

Grade: Analysis of 30 ton rock samples yielded this: High grade: 1,500 kg 38.18% Cg; Average grade: 3,670 kg 18.10% Cg; Low quality: 22,169 kg 4.33% Cg. Average of the three: 20.20% Cg.



Lac Tremblant Lac de la maison de Pierre Project

Secured large parcel of open ground within favourable paragneiss and regional fold structures with one graphite showings.

Location: 25 km southeast of Mont-Laurier. Excellent access.

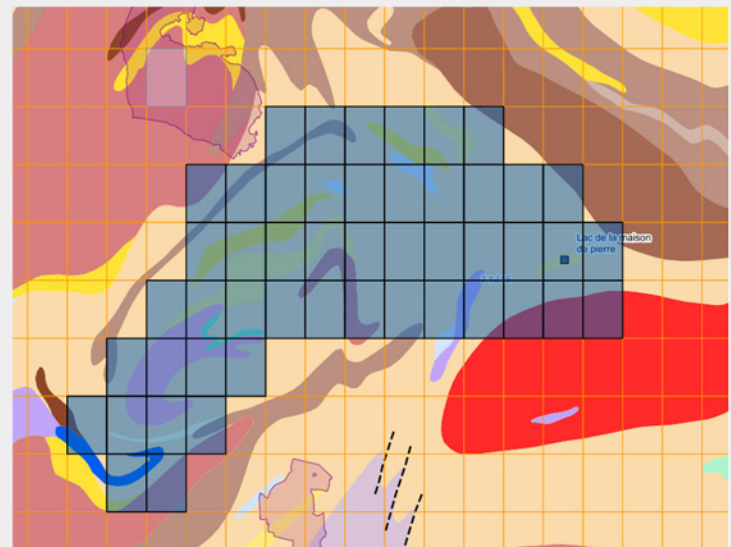
of claims: 49 room to expand

Lac de la maison de Pierre

Discovery: Mineralized zone discovered in 2000 by geological mapping.

Lithology: The host rock is a paragneiss with garnet, biotite, graphite. The rock is migmatized, injected with white pegmatite dykes and contains metagabbro lenses 10 to 40 cm thick (RG 2001-12).

Mineralization: Grade: Paragneiss contains up to 15% graphite (RG 2001-12).



Historical estimates provided are from the [GESTIM website](https://www.gestim.ca/), [Ministry of Energy and Natural Resources](https://www.mnrc.gc.ca/). A qualified person has not done sufficient work to classify the estimates and sample results provided and the issuer is not treating these estimates as current.

Contact Us

Kimberly Darlington
k.darlington@lomiko.com

