

Lomiko Metal's Projects

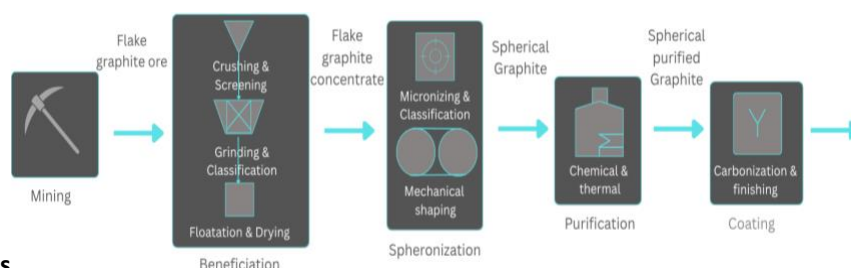
La Loutre Natural Flake Graphite

- **Pre-feasibility study led by DRA Americas – expected to finish by the end of Q1 2026, currently completed components:**
- PFS level flotation tests produced a graphite concentrate grade of up to 99.7% Cg! **LCT testing confirms 98.6-99.1% Cg con grade at 94.7% recovery!** Optimized PFS level plant flowsheet. Good flake distribution across the fractions
- **The purification studies completed show 99.99% graphitic carbon purity** with low levels of impurities, **confirming suitability for anode material.**
- Completed 13,100m drill program with 79 infill holes, **increasing Indicated resources by 184%** from 1.1Mtonnes of in-situ graphite to **3.0Mt** in addition to **0.7Mtonnes** of inferred resource.

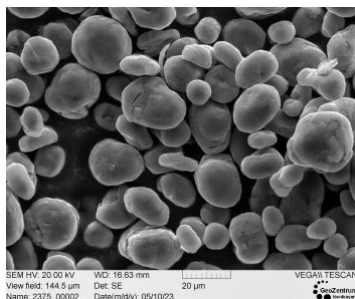
		2023 MRE			2021 MRE		
Deposit		EV	Battery	TOTAL	EV	Battery	TOTAL
Cut-off (%) Cg		1.5	1.5	1.5	1.5	1.5	1.5
Indicated mineral resource	Tonnage (kt)	24,267	40,429	64,696	8,158	15,007	23,165
	Graphite (%)	5.80	3.86	4.59	6.48	3.44	4.51
	Graphite (kt)	1,407	1,562	2,969	529	516	1,045
Inferred mineral resource	Tonnage (kt)	3,067	14,384	17,452	12,829	33,992	46,821
	Graphite (%)	4.29	3.60	3.72	5.81	3.33	4.01
	Graphite (kt)	132	518	650	745	1,132	1,878

Technical report NI-43-101 was prepared by InnovExplo independent consulting group

- **Completed half-cell coin battery and single-layer battery trials, achieving above-average conductivity results**
- *All metallurgical data was QP'd by Oliver Peters from*
- *All drilling or exploration data results are reviewed Fekete, P.Geo. from BrakawayX*



Lomiko SPG20



La Loutre Pouch cells



Anode upgrading process for 200t bulk sample

Lomiko graphite Half-cell batteries produced and tested by Polaris SPG20 sample from La Loutre has superior charging capacity compared to commercial graphite in the market today in North America.

Contact Us

info@lomiko.com

1-833-456-6456 or 1-833-4-LOMIKO

www.lomiko.com

@LomikoMetals


LOMIKO
 METALS®

DoW and NRC Non-repayable Contributions

DoD Technology Investment Agreement

✓ Award: US\$8.35

- The TIA agreement entered into with the DoD is to complete three distinct phases of research and development work with independent experts and consultants over a 5-year period
- Lomiko has de-risked 50% of study costs to US\$8.35M non-dilutive contribution

Phase 1: Completion of a Pre-Feasibility Study (PFS) and all environmental studies

Phase 2: Completion of metallurgical studies and bulk sample, including production of cSPG with Quebec research centers

Phase 3: Completion of a Definitive Feasibility Study (DFS)

NRC CMRDD Program

✓ Award: C\$4.9M

- The CMRDD2 program administered by Natural Resources Canada to pilot the integrated graphite upgrading process with a 200 mt bulk sample over 3 years.
- Total contribution agreement of C\$6.6m where Lomiko will contribute 25% of this funding

- Award supports four tasks with the work with Canadian labs

Task 1: Crushing, grinding and flotation of La Loutre graphite ore

Task 2: Chemical and thermal purification of graphite concentrate

Task 3: Micronization and spheroidization of the flotation concentrate.

Task 4: Carbon coating of purified graphite.

Why Lomiko?

- Lomiko holds 3.0Mt of in-situ M&I and 0.7Mt of inferred graphite in a high-potential Grenville belt in Quebec.
- New discovery Ruisseau with the highest carbon grades in Quebec up to 27.9% Cg.
- Exposure to antimony, REEs, base metals, and gold discovery in Newfoundland.
- ESG at heart. Lomiko is 1 of 25 ECOLOGO-certified mining companies in Quebec.

Rousseau – New graphite discovery

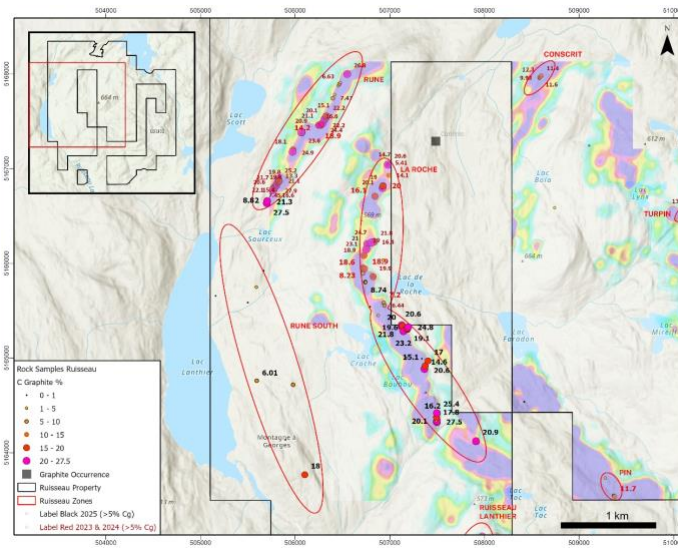
- Ruisseau drill program targeting 1,5km Rune and 3,85km La Roche zones with carbon grades up to 27.9% Cg
- Permitted 38 38-hole, 2,500-metre drill program that will test the Priority 1 drill targets at Rune and La Roche.
- QP Mark Fekete P.Geol. from BrakawayX

Yellow Fox - Antimony, gold, silver, zinc and lead

The trenching exposed the rocks, resulting in grab samples to 59.43g/t Au, 11.10% Sb, 7.00% Zn, 72.90g/t Ag, and 5.50% Pb in arsenopyrite-stibnite veins within altered monzogranite. REEs running up to 0.52% REEs in soils

Similar geology to the past producing antimony mine, Beaver Brook, intense carbonate alteration with sulphide-bearing stringers and veins of stibnite and arsenopyrite. High-grade antimony, gold, lead, and zinc.

QP Wayne Reid P.Geol., Metals Creek



REEs Zone

Gold

Antimony

